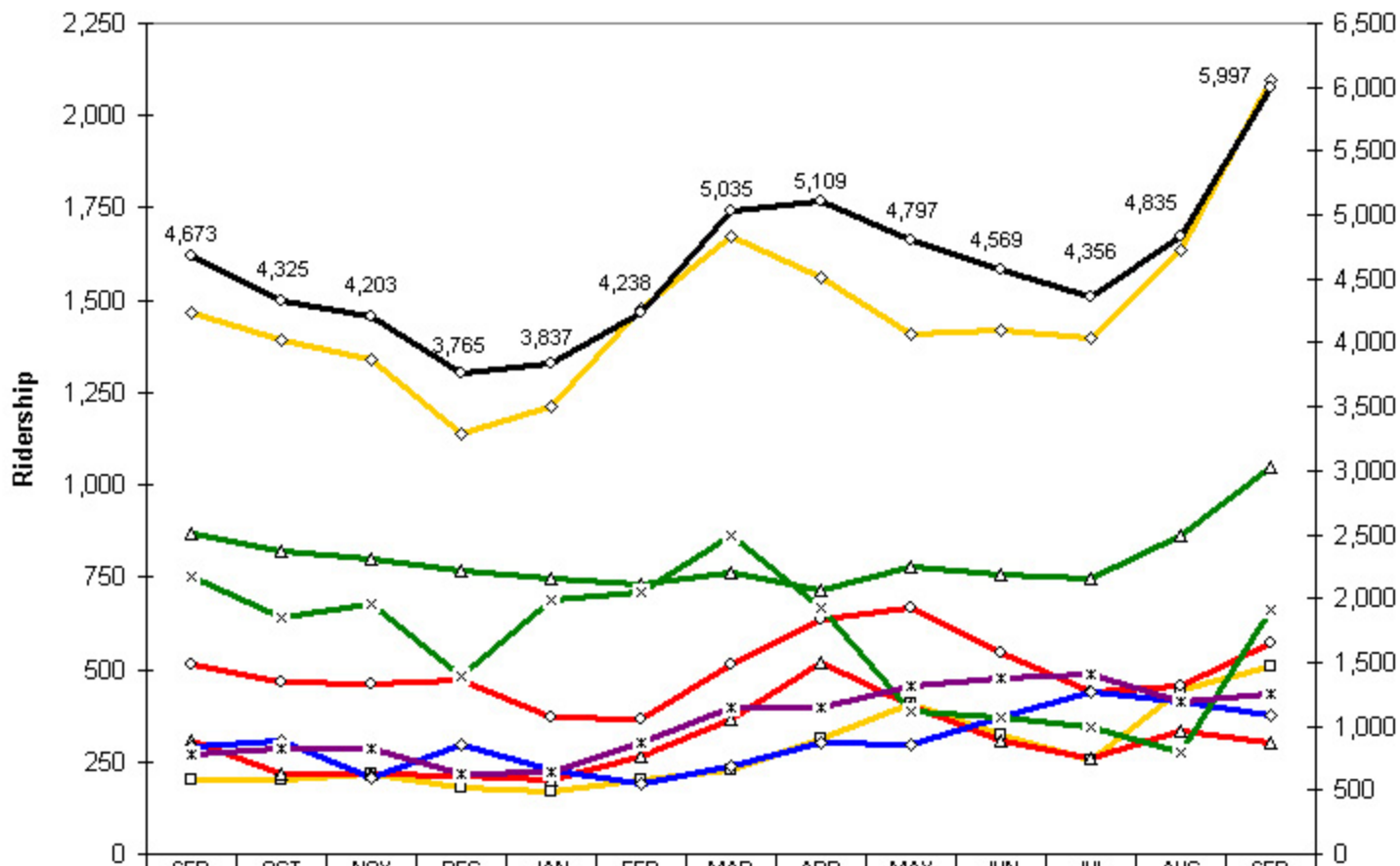


Monthly Ridership by Route Segment 9-1-2004 to 9-30-2005



	SEP	OCT	NOV	DEC	JAN	FEB	MAR	APR	MAY	JUN	JUL	AUG	SEP
Route 1a - San Andreas and Valley Springs	203	200	218	179	168	200	227	315	406	323	253	446	506
Route 1b - San Andreas and Angels Camp	1,469	1,392	1,341	1,140	1,215	1,479	1,671	1,560	1,407	1,418	1,396	1,637	2,095
Route 2a - San Andreas and Rail Road Flat	309	218	217	212	199	263	365	518	401	306	257	332	300
Route 2b - San Andreas and Jackson	513	464	458	469	369	363	514	634	669	544	438	457	571
Route 3 - San Andreas and West Point	289	307	206	296	230	188	238	304	298	372	439	414	378
Route 4a - Angels Camp and Arnold	869	818	797	769	744	732	763	717	777	757	746	861	1,049
Route 4b - Angels Camp and Columbia College	753	638	679	482	690	709	862	666	385	370	342	275	662
Lodi - San Andreas and Lodi	268	288	287	218	222	304	395	395	454	479	485	413	436
TOTAL	4,673	4,325	4,203	3,765	3,837	4,238	5,035	5,109	4,797	4,569	4,356	4,835	5,997