



Monthly Operations Report



MV Transportation, Inc.

I. Project Manager's Summary

From: Annie Self, Calaveras Transit General Manager
MV Transportation, Inc.
750 Industrial Way - P. O. Box 1385
San Andreas, Ca 95249
Phone (209) 754-4450
Fax (209) 754-9086

To: Calaveras County
C/o Jamie Azarvand
Transit Manager, Public Works
891 Mountain Ranch Road
San Andreas, CA 95249

On time performance checks:

On time performance was checked throughout the month of May. On time percentage for service in May was 97%.

Trends:

When comparing Fixed Route ridership in April and May, we found there were 2,029 fewer passenger trips in May than in April.

Route 1 had 2,958 passenger trips in April and 2,206 passenger trips in May. There was a decrease of 752 passenger trips on Route 1 in May.

Route 2 had 873 passenger trips in April and 807 passenger trips in May. There was a decrease of 66 passenger trips on Route 2 in May.

Route 3 had 384 passenger trips in April and 314 passenger trips in May. There was a decrease of 70 passenger trips on Route 3 in May.

Route 4 had 2,933 passenger trips in April and 1,882 passenger trips in May. There was a decrease of 1,051 passenger trips on Route 4 in May.

Route 5 had 462 passenger trips in April and 437 passenger trips in May. There was a decrease of 25 passenger trips on Route 5 in May.

Route 6 had 906 passenger trips in April and 841 passenger trips in May. There was a decrease of 65 passenger trips on Route 6 in May.

Route Cancellations:

None.

Comments/Compliments/Complaints:

None.

Safety and Training:

The Safety Meetings for the month of May were cancelled.

Overview:

Due to not providing shuttle service for the Calaveras County Fair this year and schools letting out for summer break, we showed a major decrease in passenger count between April and May.

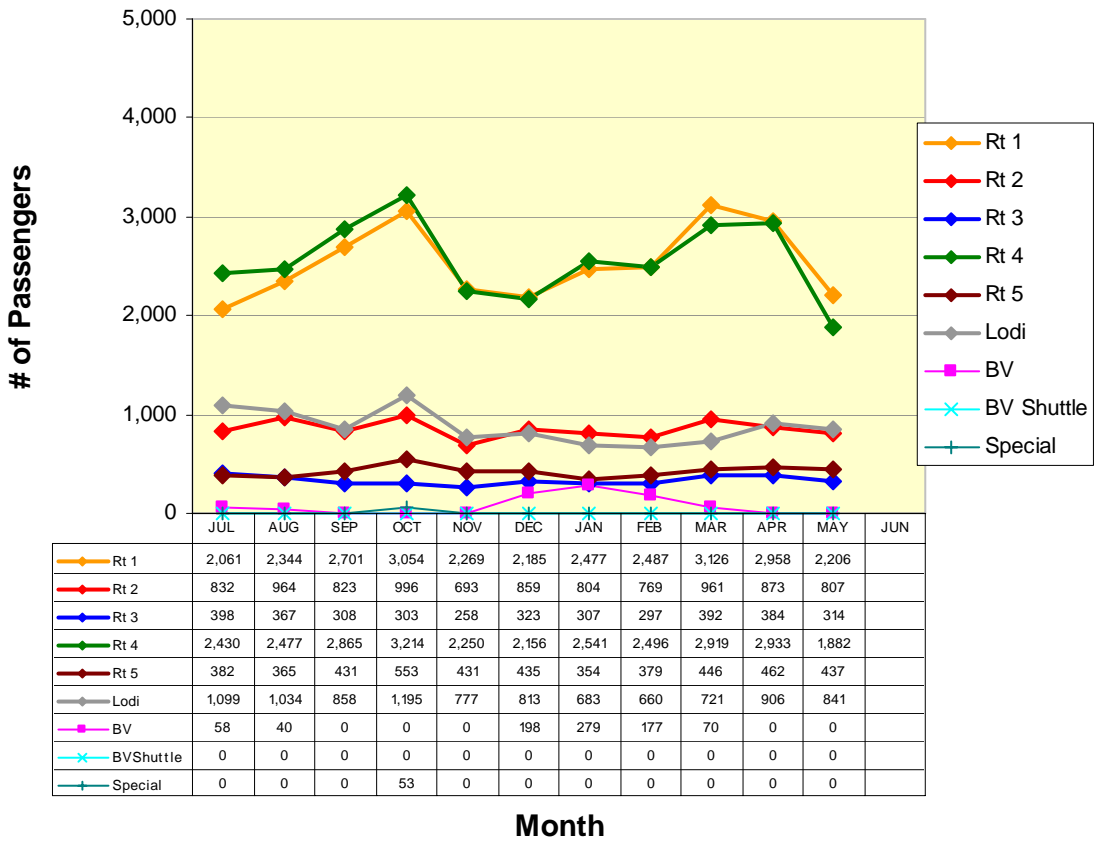
IV. Current Month Operational Statistics

	Fixed Rt.	Lodi	Special	Bear Valley	BV Shuttle	Total
Ridership	5646	841	0	0	0	6,487
Vehicle Hours	1306.27	212.65	0.00	0.00	0.00	1,518.92
Vehicle Service Hours	995.50	177.47	0.00	0.00	0.00	1,172.97
Operating Days	20	20	0	0	0	20
Vehicle Service Miles	29,416	6,130	0	0	0	35,546

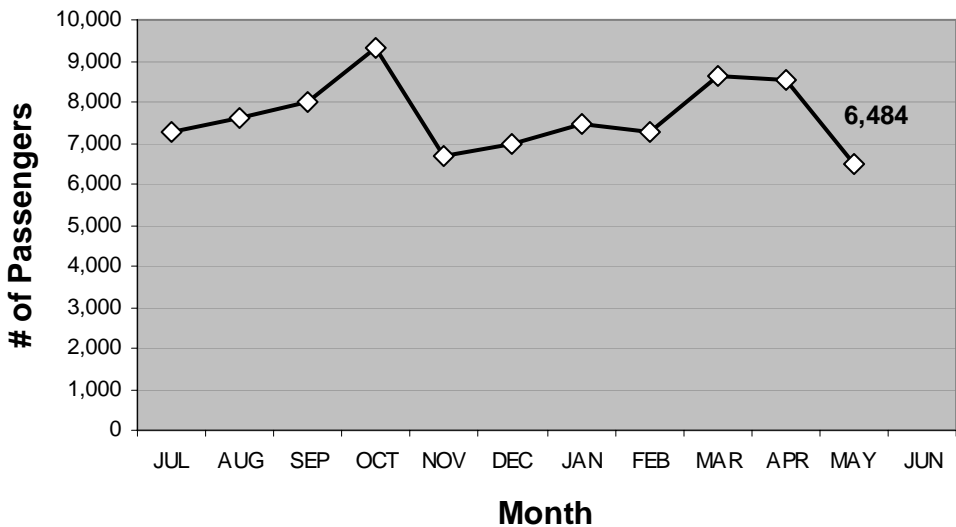
	Rt 1	Rt 2	Rt 3	Rt 4	Rt 5	Rt 6	All
Cash Regular	271	116	36	303	51	141	918
Cash Discount	477	161	114	727	283	209	1,971
Pass Regular	95	36	26	14	10	16	197
Pass Discount	237	163	3	124	5	161	693
Ticket Regular	114	35	49	77	17	19	311
Ticket Discount	205	140	45	181	16	108	695
Transfer	646	105	18	378	34	102	1,283
Promo	0	0	0	0	0	0	0
Free	94	25	12	33	4	42	210
Day Pass	67	26	11	45	17	43	209
Total Passenger #	2,206	807	314	1,882	437	841	6,487

V. Ridership Trends

Calaveras Transit Ridership



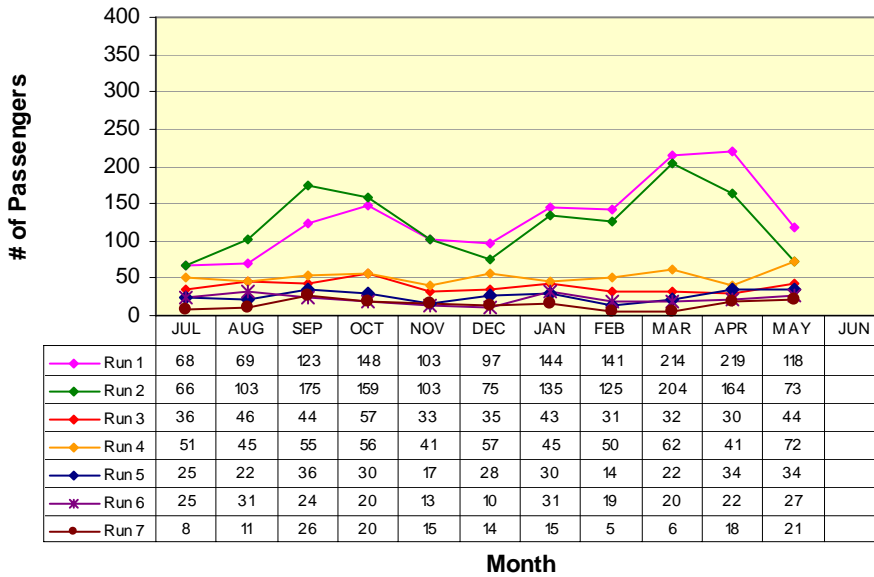
Fixed Route Ridership



ROUTE 1a

Rancho Calaveras / Valley Springs / San Andreas

Route 1a(E) (La Contenta to San Andreas*)



RUN 1:
La Contenta 6:30am
Govt Center 6:55am

RUN 2:
Valley Oak Center 8:35am
Govt Center 9:00am

RUN 3:
La Contenta 11:45am
Govt Center 12:20pm

RUN 4:
La Contenta 1:35pm
Govt Center 2:00pm

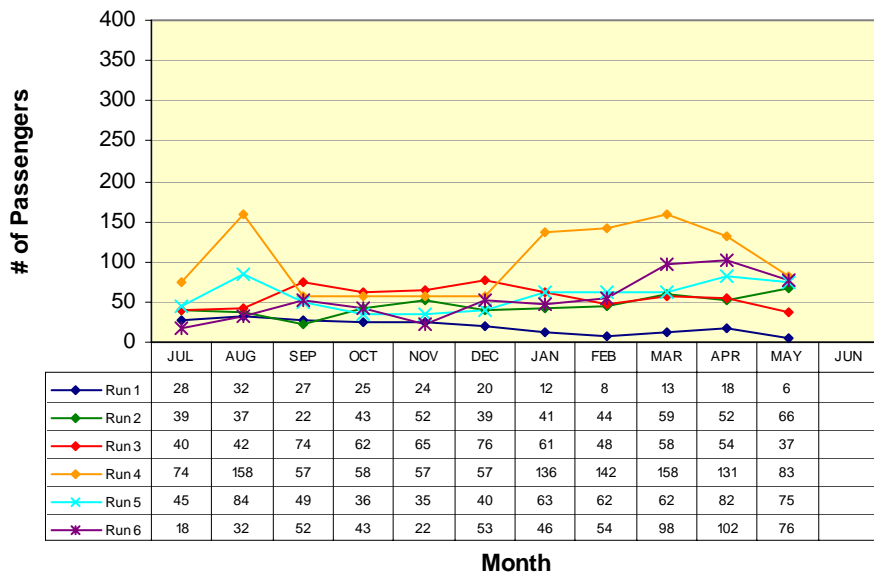
RUN 5:
La Contenta 3:15pm
Govt Center 3:40pm

RUN 6:
La Contenta 4:45pm
Govt Center 5:10pm

RUN 7:
La Contenta 6:25pm
Govt Center 6:50pm

*Does not include Lodi Service runs

Route 1a(W) (Government Center to La Contenta*)



RUN 1:
Govt Center 8:00am
La Contenta 8:25am

RUN 2:
Govt Center 11:20am
La Contenta 11:45am

RUN 3:
Govt Center 1:05pm
La Contenta 1:30pm

RUN 4:
Govt Center 2:50pm
La Contenta 3:15pm

RUN 5:
Govt Center 4:20pm
La Contenta 4:45pm

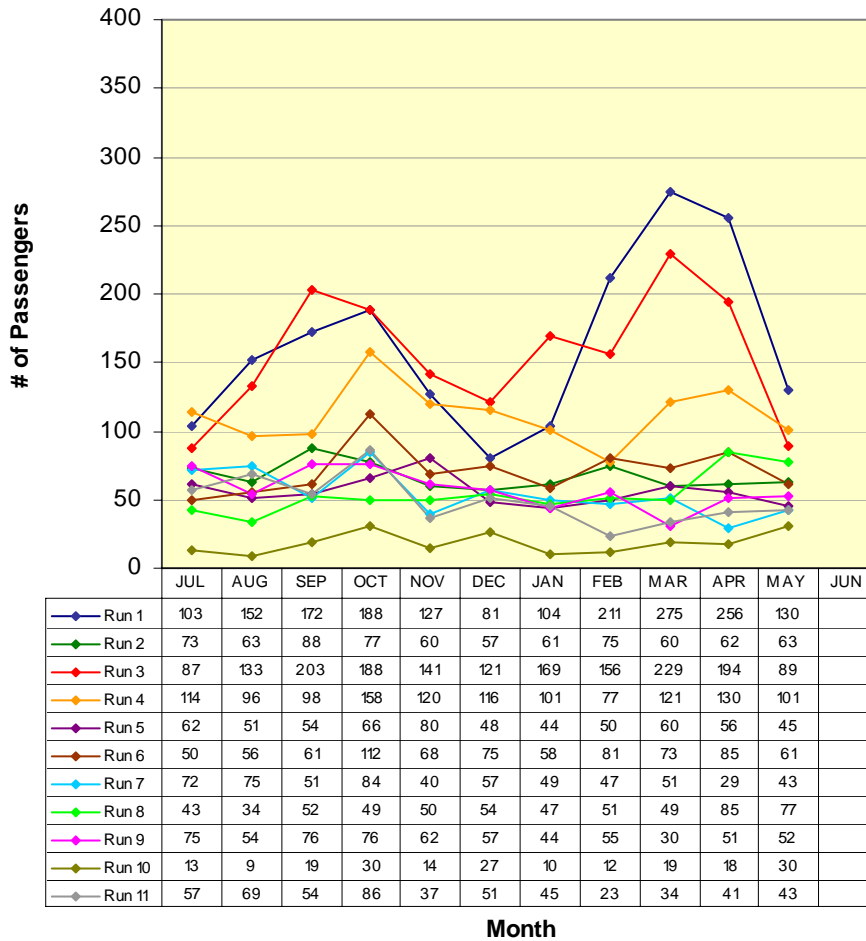
RUN 6:
Govt Center 5:55pm
La Contenta 6:25pm

* Does not include Lodi Service runs

ROUTE 1b

San Andreas / Angels Camp

Route 1b(S) (San Andreas to Angels Camp)

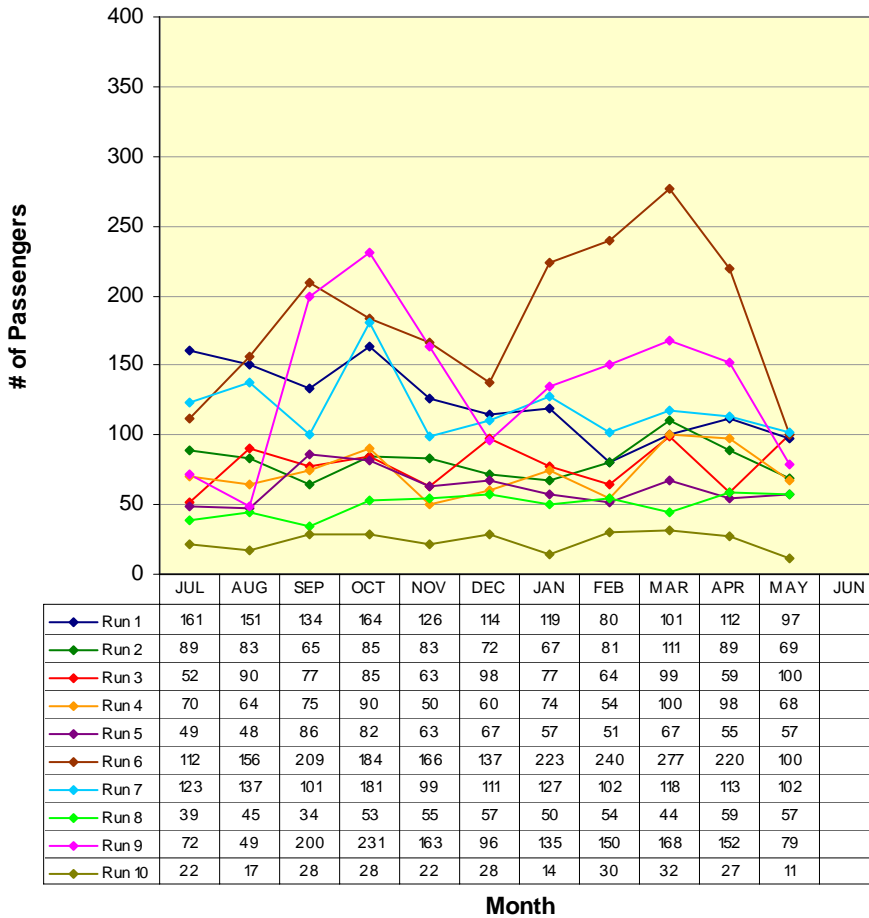


RUN 1:	Govt Center	6:55am
	Save Mart	7:15am
RUN 2:	Govt Center	7:55am
	Save Mart	8:20am
RUN 3:	Govt Center	9:00am
	Save Mart	9:20am
RUN 4:	Govt Center	11:38am
	Save Mart	11:55am
RUN 5:	Govt Center	12:15pm
	Save Mart	12:35pm
RUN 6:	Govt Center	2:00pm
	Save Mart	2:20pm
RUN 7:	Govt Center	2:40pm
	Save Mart	3:00pm
RUN 8:	Govt Center	3:40pm
	Save Mart	4:00pm
RUN 9:	Govt Center	5:10pm
	Save Mart	5:30pm
RUN 10:	Govt Center	6:50pm
	Save Mart	7:10pm
RUN 11:	Govt Center	7:40pm
	Save Mart	8:00pm

ROUTE 1b

San Andreas / Angels Camp

Route 1b(N) (Angels Camp to San Andreas)

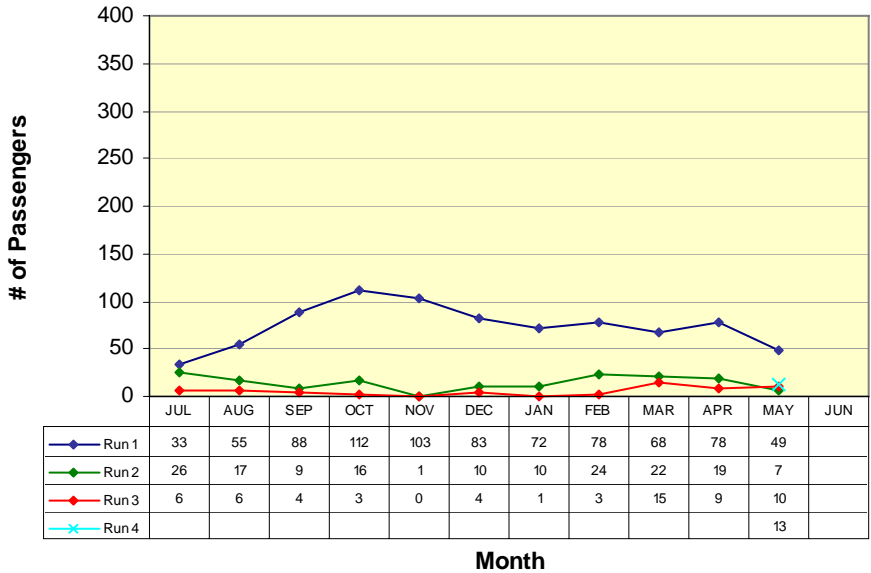


RUN 1:	
Save Mart	7:20am
Govt Center	7:55am
RUN 2:	
Save Mart	8:35am
Govt Center	9:00am
RUN 3:	
Save Mart	11:00am
Govt Center	11:20am
RUN 4:	
Save Mart	12:00pm
Govt Center	12:20pm
RUN 5:	
Save Mart	12:45pm
Govt Center	1:05pm
RUN 6:	
Save Mart	2:30pm
Govt Center	2:50pm
RUN 7:	
Save Mart	4:00pm
Govt Center	4:20pm
RUN 8:	
Save Mart	4:50pm
Govt Center	5:10pm
RUN 9:	
Save Mart	5:35pm
Govt Center	5:55pm
RUN 10:	
Save Mart	7:10pm
Govt Center	7:30pm

ROUTE 2a

Railroad Flat / Mountain Ranch / San Andreas

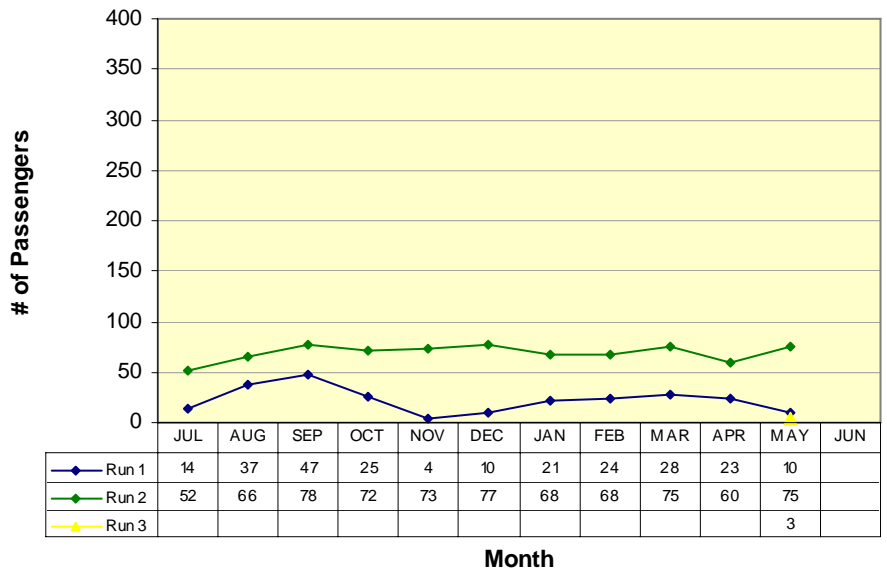
Route 2a(W) (Railroad Flat/Mtn Ranch to San Andreas*)



RUN 1:
Community Center 7:00am
Govt Center 7:40am
RUN 2:
Blunder Inn 9:10am
Govt Center 9:23am
RUN 3:
Community Center 6:15pm
Govt Center 6:45pm

**Not all runs begin in same location*

Route 2a(E) (San Andreas to Mtn Ranch/Railroad Flat*)



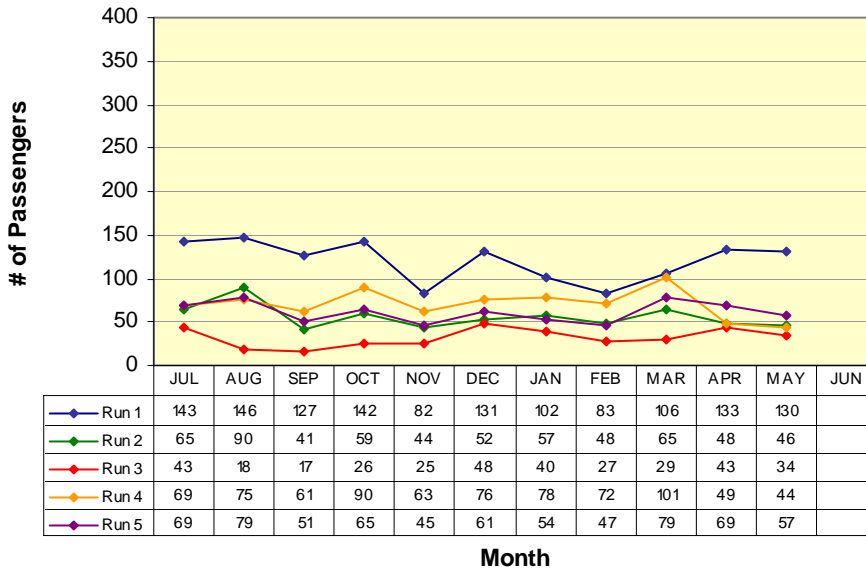
RUN 1:
Govt Center 8:48am
Blunder Inn 9:01am
RUN 2:
Govt Center 5:45pm
Community Hall 6:30pm

**Not all runs end in same location*

ROUTE 2b

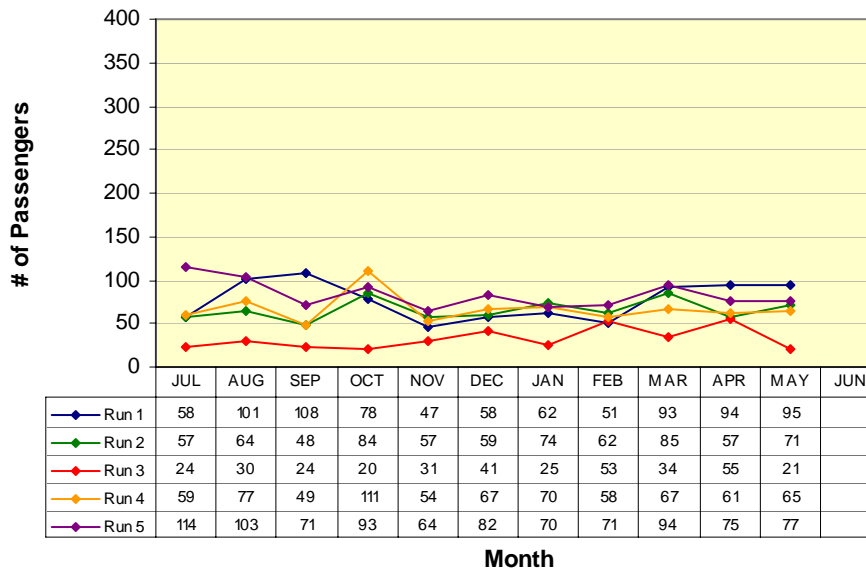
San Andreas / Mokelumne Hill / Jackson

Route 2b(N) (San Andreas to Jackson)



RUN 1:	
Govt Center	7:40am
Raley's	8:13am
RUN 2:	
Govt Center	9:23am
Raley's	9:53am
RUN 3:	
Govt Center	11:00am
Raley's	11:33am
RUN 4:	
Govt Center	1:30pm
Raley's	2:03pm
RUN 5:	
Govt Center	4:10pm
Raley's	4:44pm

Route 2b(S) (Jackson to San Andreas)

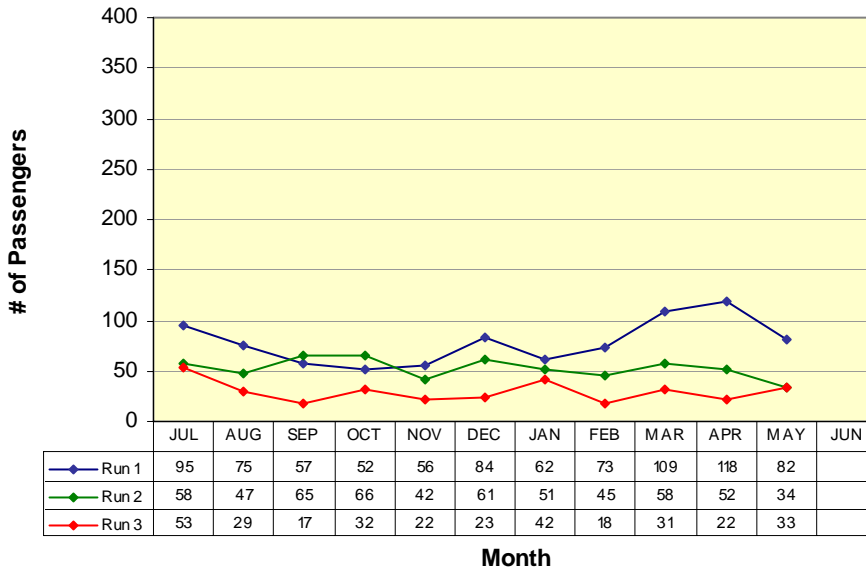


RUN 1:	
Raley's	8:18am
Govt Center	8:48am
RUN 2:	
Raley's	10:23am
Govt Center	10:53am
RUN 3:	
Raley's	11:40am
Govt Center	12:10pm
RUN 4:	
Raley's	2:07pm
Govt Center	2:37pm
RUN 5:	
Raley's	5:07pm
Govt Center	5:45pm

ROUTE 3

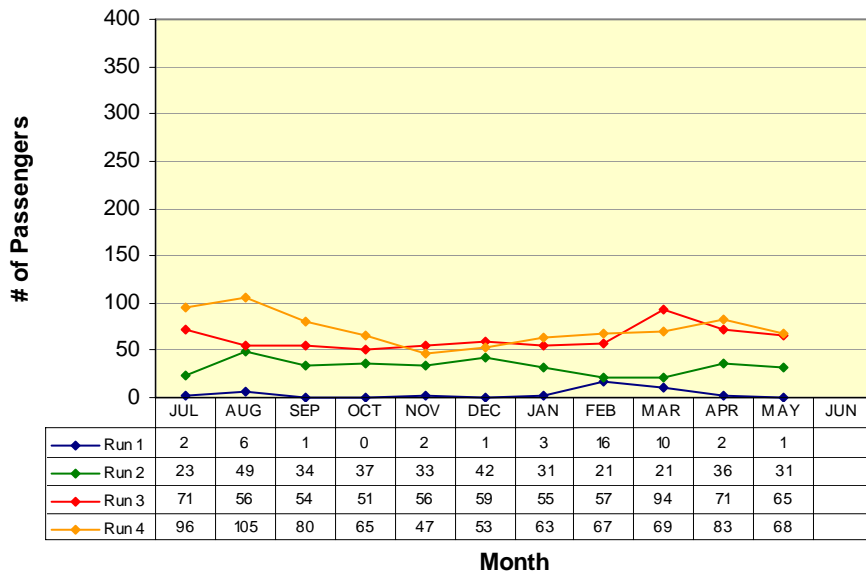
West Point / Glencoe / Mokelumne Hill / San Andreas

Route 3(W) (West Point to San Andreas)



RUN 1:
Community Hall 6:50am
Govt Center 7:40am
RUN 2:
Community Hall 11:00am
Govt Center 11:50am
RUN 3:
Community Hall 4:00pm
Govt Center 4:50pm

Route 3(E) (San Andreas to West Point)

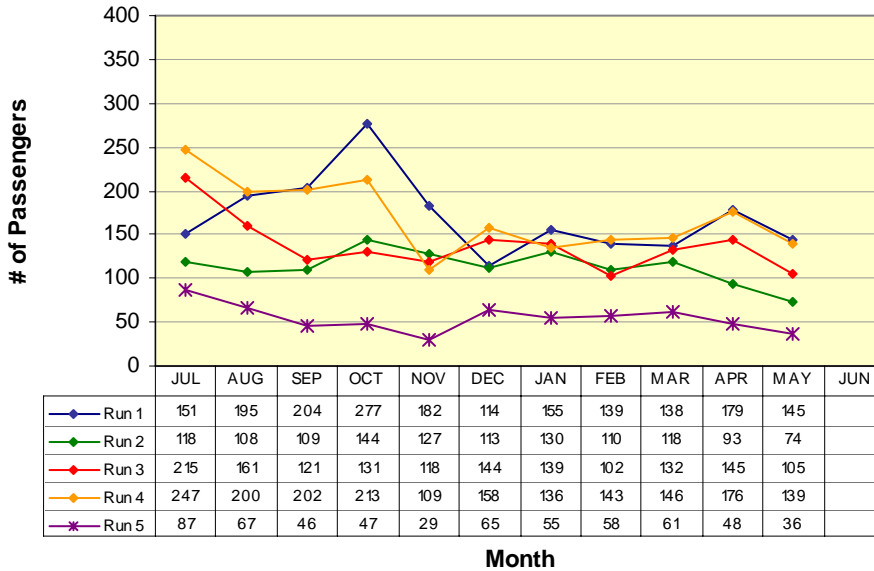


RUN 1:
Moke Hill STP 6:15am
Community Hall 6:50am
RUN 2:
Govt Center 10:00am
Community Hall 10:50am
RUN 3:
Govt Center 3:00pm
Community Hall 3:50pm
RUN 4:
Govt Center 5:20pm
Community Hall 6:10pm

ROUTE 4a

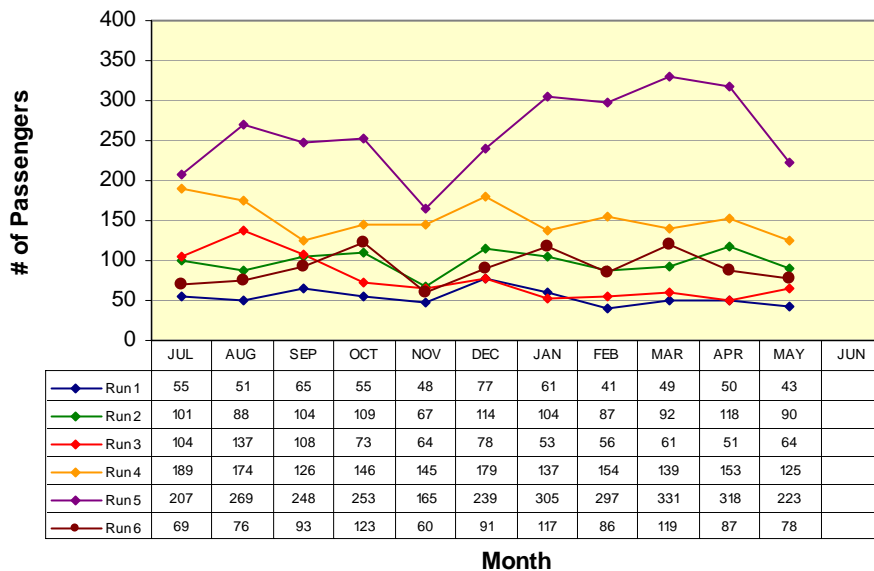
Arnold / Avery / Forest Meadows / Murphys / Angels Camp

Route 4a(W) (Arnold to Angels Camp)



RUN 1:
Post Office 6:15am
Save Mart 7:15am
RUN 2:
Post Office 9:30am
Save Mart 10:10am
RUN 3:
Post Office 12:00pm
Save Mart 12:45pm
RUN 4:
Post Office 3:00pm
Save Mart 4:00pm
RUN 5:
Post Office 6:25pm
Save Mart 7:04pm

Route 4a(E) (Angels Camp to Arnold)

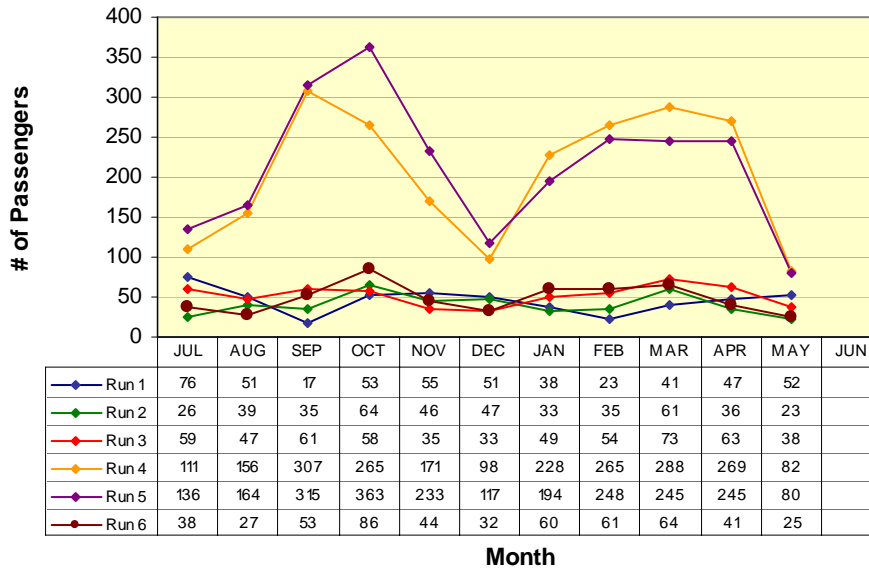


RUN 1:
Save Mart 5:44am
Post Office 6:15am
RUN 2:
Save Mart 8:35am
Post Office 9:15am
RUN 3:
Save Mart 11:00am
Post Office 11:40am
RUN 4:
Save Mart 2:20pm
Post Office 3:00pm
RUN 5:
Save Mart 5:35pm
Post Office 6:15pm
RUN 6:
Save Mart 9:47pm
Post Office 10:27pm

Route 4b

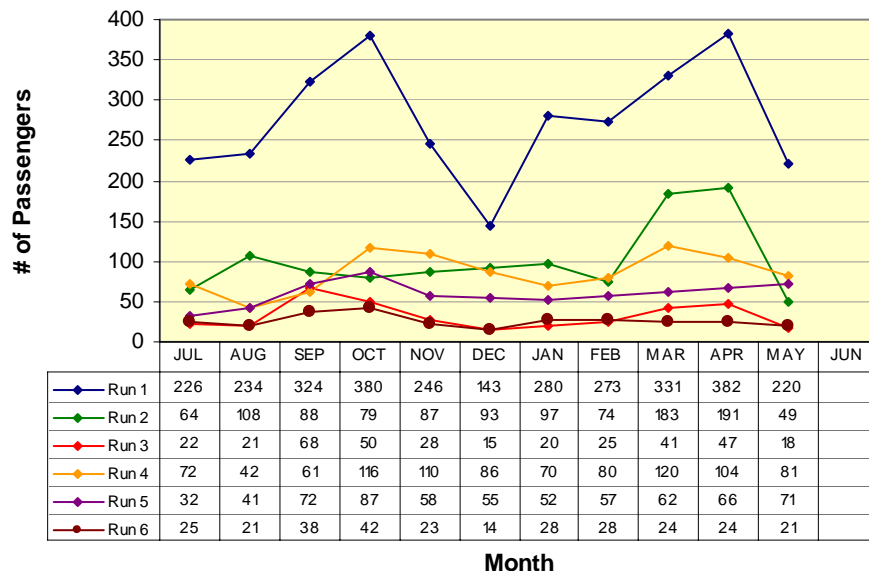
Angels Camp / Calaveras Center / Columbia College

Route 4b(N) (Columbia College to Angels Camp)



RUN 1:	
Oak Pavilion	7:58am
Save Mart	8:35am
RUN 2:	
Oak Pavilion	10:18am
Save Mart	11:00am
RUN 3:	
Oak Pavilion	11:08am
Save Mart	12:00pm
RUN 4:	
Oak Pavilion	1:40pm
Save Mart	2:20pm
RUN 5:	
Oak Pavilion	5:00pm
Save Mart	5:35pm
RUN 6:	
Oak Pavilion	9:10pm
Save Mart	9:47pm

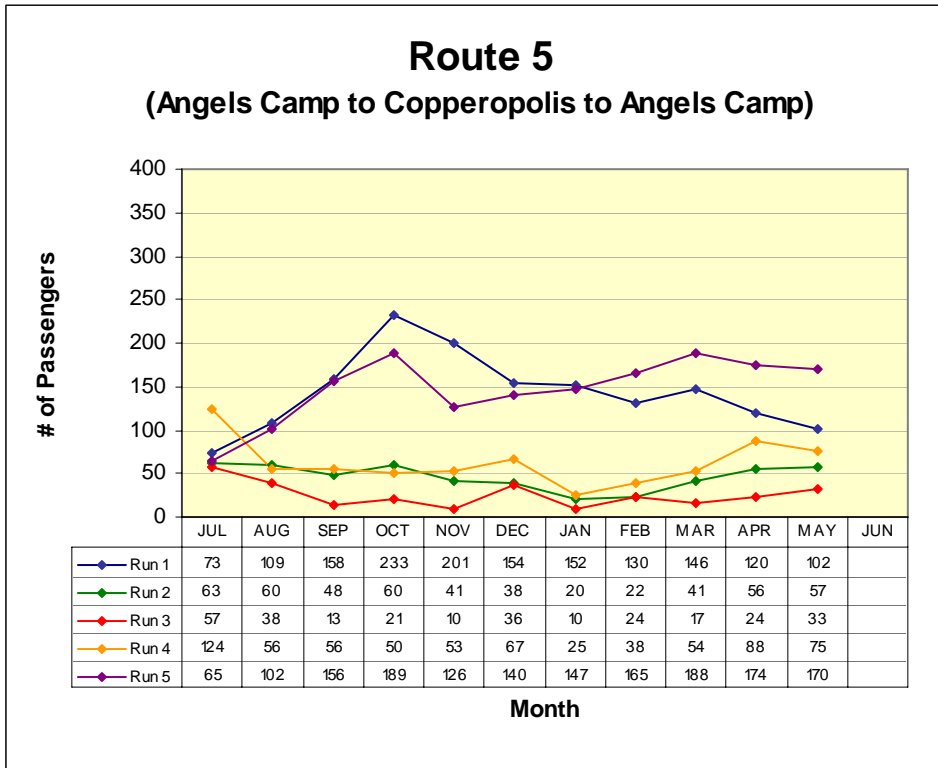
Route 4b(S) (Angels Camp to Columbia College)



RUN 1:	
Save Mart	7:15am
Oak Pavilion	7:50am
RUN 2:	
Save Mart	9:30am
Oak Pavilion	10:10am
RUN 3:	
Save Mart	10:10am
Oak Pavilion	10:52am
RUN 4:	
Save Mart	12:45pm
Oak Pavilion	1:30pm
RUN 5:	
Save Mart	4:00pm
Oak Pavilion	4:42pm
RUN 6:	
Save Mart	8:20pm
Oak Pavilion	9:02pm

Route 5

Angels Camp / Copperopolis / Angels Camp

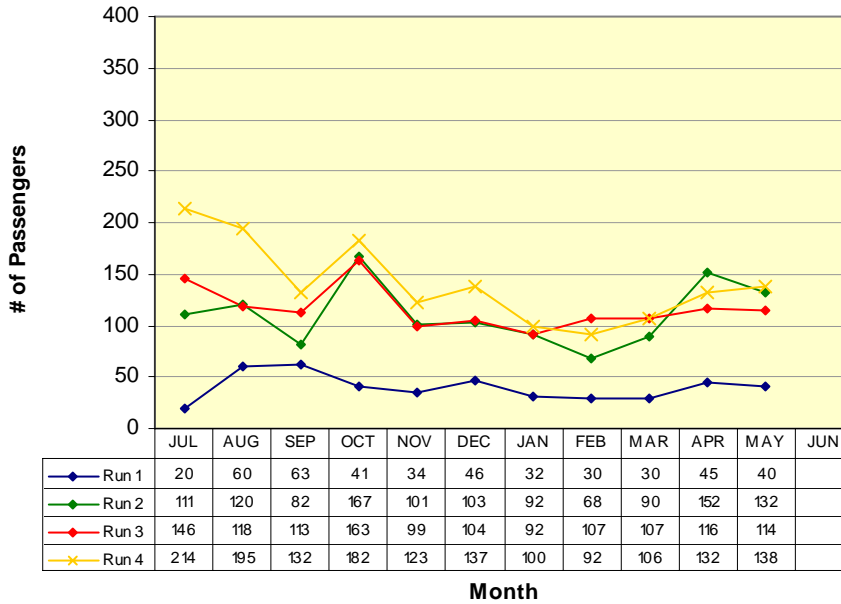


RUN 1:	
Save Mart	6:15am
Save Mart	7:15am
RUN 2:	
Save Mart	11:00am
Save Mart	12:00pm
RUN 3:	
Save Mart	12:00pm
Save Mart	1:00pm
RUN 4:	
Save Mart	3:00pm
Save Mart	4:00pm
RUN 5:	
Save Mart	5:35pm
Save Mart	6:35pm

Route 6

San Andreas / Valley Springs / Wallace / Clements / Lockeford / Victor / Lodi

San Andreas to Lodi (W)



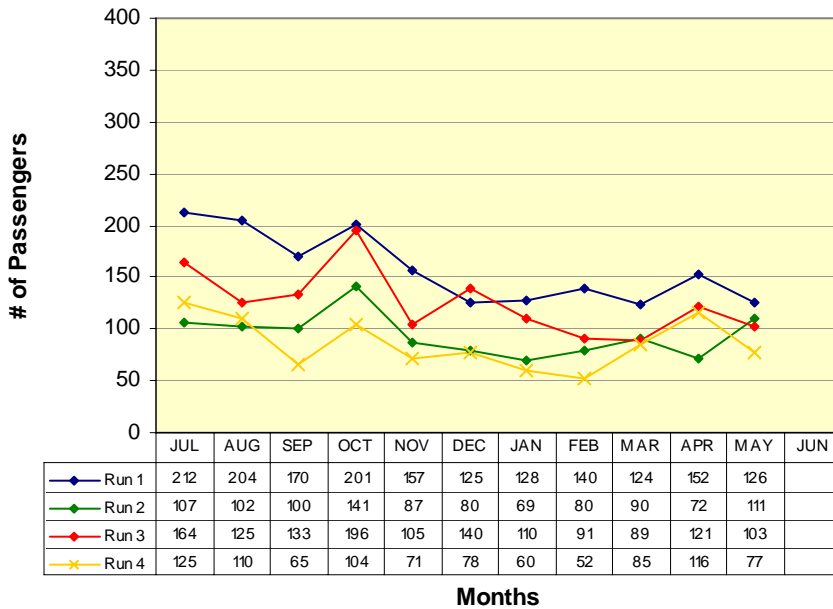
RUN 1:
Govt Center 5:50am
Lodi Station 6:45am

RUN 2:
Govt Center 9:05am
Lodi Station 10:15am

RUN 3:
Govt Center 12:20pm
Lodi Station 1:15pm

RUN 4:
Govt Center 5:10pm
Lodi Station 6:15pm

Lodi to San Andreas (E)



RUN 1:
Lodi Station 6:50am
Govt Center 7:55am

RUN 2:
Lodi Station 10:30am
Govt Center 11:38am

RUN 3:
Lodi Station 1:30pm
Govt Center 2:40pm

RUN 4:
Lodi Station 6:30pm
Govt Center 7:40pm

VI. Vehicles Report

<i>Vehicle #</i>	<i>End Miles</i>	<i>Miles this Month</i>	<i>Miles YTD</i>	<i>Fuel Mileage</i>	<i>Breakdown Frequency</i>	<i>Repair Costs</i>	<i>Major Components Repaired / Replaced</i>
Bus 442	271172	4400	46787	9.9	39758		
Bus 54	335298	4695	39175	9.9	12477		
Bus 55	323249	3415	45367	9.8	32359		
Bus 56	238564	5648	48791	9.2	43577		
Bus 57	255558	493	29868	9.8	15943		
Bus 58	49918	6515	47222	10.9	49918		
Bus 59	46436	824	43438	8.7	0	Warranty	Pending
Bus 60	63115	5285	59590	8.7	63115		
Bus 61	61357	5620	57256	8.8	61357		
Bus 62	54388	5276	50064	8.3	5276	Warranty	Fuel pump / crankcase sensors

VII. Service Disruption Summary

DATE	SCHED. TIME	ROUTE	BUS #	LOCATION	REASON	MINUTES DELAYED
5/1/09	2:40 PM	6	57	Govt Center	Mobility device	29
5/1/09	3:00 PM	4	61	Arnold	Deviations	19
5/1/09	3:15 PM	1	54	Vista Del Lago	Deviations	19
5/1/09	3:40 PM	1	54	Govt Center	Catching up from devations	19
5/1/09	4:00 PM	1	54	Save Mart	Catching up from devations	19
5/1/09	4:20 PM	1	54	Govt Center	Catching up from devations	24
5/1/09	4:45 PM	1	54	Vista Del Lago	Catching up from devations	26
5/1/09	5:10 PM	1	54	Govt Center	Catching up from devations	24
5/4/09	2:40 PM	6	56	Govt Center	Mobility device	32
5/4/09	7:04 PM	4	59	Transfer Center	Deviations	24
5/4/09	2:20 PM	4	58	Transfer Center	Deviations	20
5/4/09	3:00 PM	4	58	Arnold	Flagdowns & deviations	35
5/4/09	4:00 PM	4	58	Transfer Center	Catching up from devations	31
5/4/09	3:15 PM	2	61	Vista Del Lago	Deviations	17

VII. Service Disruption Summary

DATE	SCHED. TIME	ROUTE	BUS #	LOCATION	REASON	MINUTES DELAYED
5/4/09	15:40	2	61	Govt Center	Catching up from deviations	16
5/4/09	16:00	2	61	Transfer Center	Catching up from deviations	16
5/4/09	16:20	2	61	Govt Center	Catching up from deviations	18
5/5/09	14:40	6	56	Govt Center	Mobility device	30
5/6/09	19:04	4	58	Transfer Center	Deviations	24
5/6/09	15:00	4	61	Arnold	Deviations	17
5/6/09	16:20	1	62	Govt Center	Deviations	16
5/7/09	14:40	6	56	Govt Center	Mobility device	25
5/7/09	17:35	4	58	Transfer Center	Waiting for transfers	45
5/7/09	18:25	4	58	Arnold	Catching up from transfers	42
5/7/09	19:04	4	58	Transfer Center	Catching up from transfers	46
5/7/09	12:15	1	442	Govt Center	Mobility device	25
5/7/09	12:45	1	442	Transfer Center	Catching up from mobility device	23
5/7/09	13:05	1	442	Govt Center	Catching up from mobility device	25

VII. Service Disruption Summary

DATE	SCHED. TIME	ROUTE	BUS #	LOCATION	REASON	MINUTES DELAYED
5/7	13:35	1	442	Vista Del Lago	Catching up from mobility device	17
5/7	9:23	2	62	Govt Center	Road work	18
5/7	9:53	2	62	Raleys	Catching up from road work	21
5/7	10:23	2	62	Raleys	Catching up from road work	21
5/7	15:00	4	60	Arnold	Deviations	17
5/7	15:40	1	62	Govt Center	Deviations	20
5/7	16:00	1	62	Transfer Center	Mobility device	40
5/7	16:20	1	62	Govt Center	Catching up from mobility device	40
5/7	16:45	1	62	Vista Del Lago	Catching up from mobility device	60
5/7	17:10	1	62	Govt Center	Catching up from mobility device	55
5/8	19:04	4	58	Transfer Center	Deviations	24
5/8	15:00	4	442	Arnold	Deviations	17
5/8	16:00	4	442	Transfer Center	Catching up from devations	17
5/11	14:40	6	58	Govt Center	Mobility device	26

VII. Service Disruption Summary

DATE	SCHED. TIME	ROUTE	BUS #	LOCATION	REASON	MINUTES DELAYED
5/12/09	2:40 PM	6	56	Govt Center	Mobility device	16
5/12/09	2:37 PM	2	58	Govt Center	Mobility device	25
5/12/09	3:00 PM	4	61	Arnold	Turned back for missed passenger	21
5/13/09	6:25 PM	4	62	Arnold	Flagdowns & deviations	17
5/13/09	7:04 PM	4	62	Transfer Center	Catching up from deviations	19
5/15/09	2:40 PM	6	56	Govt Center	Mobility device	18
5/15/09	6:30 PM	6	61	Lodi	Bus breakdown	18
5/15/09	7:40 PM	6	61	Govt Center	Catching up from breakdown	18
5/15/09	3:00 PM	4	60	Arnold	Flagdowns & deviations	21
5/18/09	2:40 PM	6	56	Govt Center	Mobility device	35
5/19/09	2:40 PM	6	60	Govt Center	Mobility device	20
5/19/09	3:00 PM	4	61	Arnold	Deviations	18
5/20/09	11:45 AM	1	442	Vista Del Lago	Bus swap	18
5/20/09	3:00 PM	4	60	Arnold	Flagdowns & deviations	18

VII. Service Disruption Summary

DATE	SCHED. TIME	ROUTE	BUS #	LOCATION	REASON	MINUTES DELAYED
5/21/09	2:40 PM	6	62	Govt Center	Mobility device	20
5/21/09	3:00 PM	4	61	Arnold	Flagdowns & deviations	19
5/21/09	4:00 PM	4	61	Transfer Center	Catching up from deviations	16
5/22/09	7:04 PM	4	58	Transfer Center	Deviations	16
5/22/09	6:15 AM	4	58	Arnold	Flagdowns & deviations	19
5/22/09	3:00 PM	4	62	Arnold	Flagdowns & deviations	34
5/22/09	4:00 PM	4	62	Transfer Center	Catching up from deviations	30
5/26/09	2:40 PM	6	56	Govt Center	Mobility device	20
5/28/09	6:15 AM	4	61	Arnold	Flagdowns & deviations	22
5/29/09	7:04 PM	4	60	Transfer Center	Deviations	20
5/29/09	6:15 AM	4	60	Arnold	Flagdowns & deviations	16

VIII. Fleet Maintenance Report

Identified Concern	Bus	Date Filed	Action Taken	Date Reconciled	Completed By
Bus losing power	62	6-Apr	Bus sent to International Stockton for diagnosis; fuel pump & crankcase sensors replaced	5-May	International
Inspection	62	5-May	A service inspection	5-May	RB
Bus motor problem	59	6-May	Bus sent to International Stockton for diagnosis	Pending	Pending
Inspection	56	6-May	A service inspection	6-May	RB
Low battery light	55	8-May	Replace transmission wiring harness, replace transmission assembly, inline filter and flush cooler	8-May	RB
Inspection	60	12-May	A service inspection, repair aux/rear a/c system, replace front tires	12-May	RB
Inspection	442	13-May	A service inspection, replace front brake pads, lube calipers, replace front upper cab marker bulb	13-May	RB
Inspection	61	13-May	A service inspection, inspect front blower motor inoperative, intermittently trips circuit breaker, replace weak circuit breaker with fuse	13-May	RB
Inspection	58	14-May	A service inspection, install used advertisement board	14-May	RB
Bus power loss	56	18-May	Diagnose lack of speed, found open circuit, repair wiring connector	18-May	RB
Inspection	54	18-May	A service inspection	18-May	RB
Rear tires worn	54	19-May	Replace rear tires	19-May	RB
Tires need replacement	60	22-May	Replace all tires due to wear	22-May	RB

IX. Wheelchair Lift Use

For the month of: May 2009

Date	Vehicle #	Pick up Point	Drop off Point	Pick-up time	Drop-off time	Uses
5/1	57	Lodi	Double Springs	1350	1453	2
5/4	56	Lodi	Double Springs	1353	1454	2
5/5	56	Lodi	Double Springs	1350	1452	2
5/7	56	Lodi	Double Springs	1348	1450	2
5/7	442	Gold Ct., S.A.	Save Mart	1215	1308	2
5/7	62	Save Mart	Gold Ct., S.A.	1640	1710	2
5/8	56	Lodi	Double Springs	1339	1436	2
5/11	58	Lodi	Double Springs	1342	1448	2
5/12	56	Lodi	Double Springs	1344	1440	2
5/12	58	Bear Mt. Apts	Dr. Oliver	1435	1450	2
5/12	55	Dr. Oliver	Bear Mt. Apts	1611	1623	2
5/14	56	Lodi	Double Springs	1347	1440	2
5/15	56	Lodi	Double Springs	1341	1440	2
5/18	56	Lodi	Double Springs	1349	1452	2
5/19	60	Lodi	Double Springs	1343	1445	2
5/21	62	Lodi	Double Springs	1347	1447	2
5/22	54	Lodi	Double Springs	1332	1429	2
5/26	56	Lodi	Double Springs	1342	1439	2
5/28	56	Lodi	Double Springs	1333	1429	2
5/29	442	Lodi	Double Springs	1334	1430	2