



## Monthly Operations Report



MV Transportation, Inc.

# I. Project Manager's Summary

**From:** Annie Self, Calaveras Transit General Manager  
MV Transportation, Inc.  
750 Industrial Way - P. O. Box 1385  
San Andreas, Ca 95249  
Phone (209) 754-4450  
Fax (209) 754-9086

**To:** Calaveras County  
C/o Jamie Azarvand  
Transit Manager, Public Works  
891 Mountain Ranch Road  
San Andreas, CA 95249

## **On time performance checks:**

On time performance was checked throughout the month of December. On time percentage for service in December was 92%.

## **Trends:**

When comparing Fixed Route ridership in November and December, we found there were 291 more passenger trips in December than in November.

Route 1 had 2,269 passenger trips in November and 2,185 passenger trips in December. There was a decrease of 84 passenger trips on Route 1 in December.

Route 2 had 693 passenger trips in November and 859 passenger trips in December. There was an increase of 166 passenger trips on Route 2 in December.

Route 3 had 258 passenger trips in November and 323 passenger trips in December. There was an increase of 65 passenger trips on Route 3 in December.

Route 4 had 2,250 passenger trips in November and 2,156 passenger trips in December. There was a decrease of 94 passenger trips on Route 4 in December.

Route 5 had 431 passenger trips in November and 435 passenger trips in December. There was an increase of 4 passenger trips on Route 5 in December.

Route 6 had 777 passenger trips in November and 813 passenger trips in December. There was an increase of 36 passenger trips on Route 6 in December.

The Bear Valley Ski Bus had 192 passenger trips in December 2007 and 198 passenger trips in December 2008. There was an increase of 6 passenger trips on the Bear Valley Ski Bus in December 2008.

**Route Cancellations:**

12/15 – 10:10 Route 4 Angels camp Transfer Station to Columbia College

12/15 – 11:08 Route 4 Columbia College to Angels Camp Transfer Station

12/23 – 1:40 Route 4 Columbia College to Angels Camp Transfer Station

**Comments/Compliments/Complaints:**

There were no compliments, comments, or complaints received in the month of December.

**Safety and Training:**

The Safety Meetings for the month of December were held on December 17<sup>th</sup>. The topic of the safety meeting was Customer Service.

**Overview:**

Passenger counts on some routes have begun to show seasonal improvement. We expect that once the schools are back in session that our passenger counts will rise to our normal expected levels.





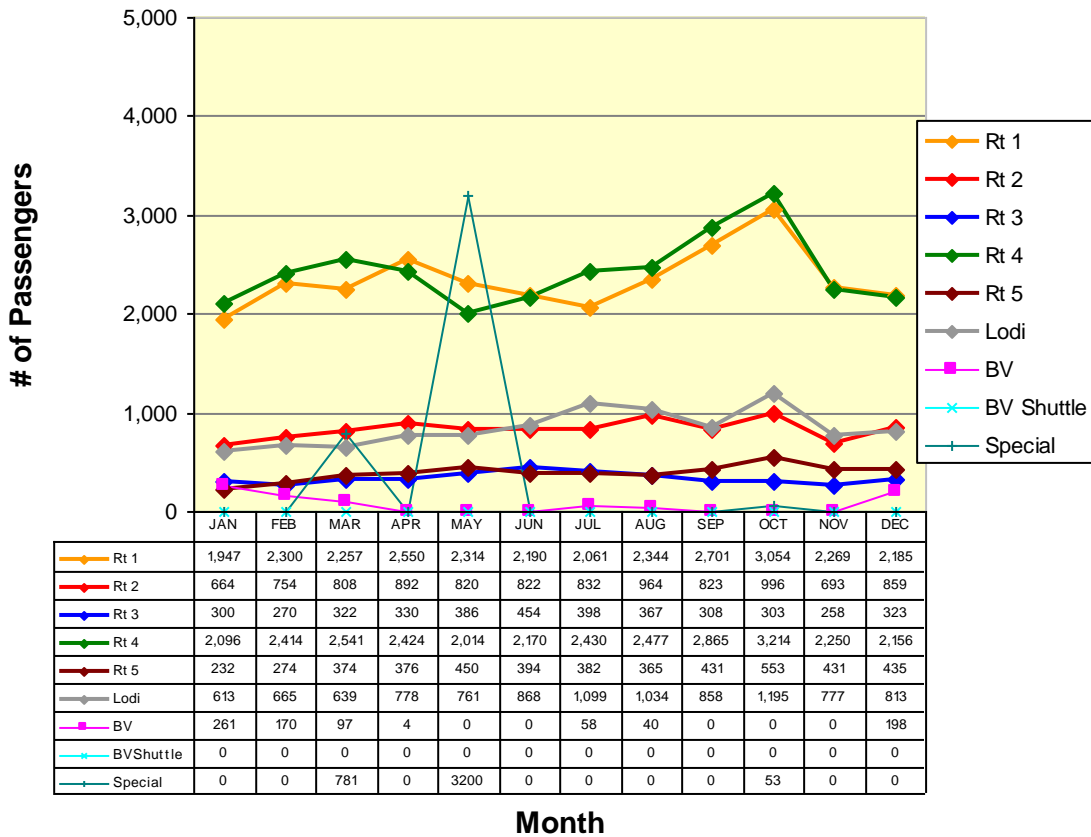
## IV. Current Month Operational Statistics

	Fixed Rt.	Lodi	Special	Bear Valley	BV Shuttle	Total
Ridership	5958	813	0	198	0	6,969
Vehicle Hours	1366.10	219.32	0.00	33.25	0.00	1,618.67
Vehicle Service Hours	1038.63	189.22	0.00	30.22	0.00	1,258.07
Operating Days	21	21	0	7	0	25
Vehicle Service Miles	29,780	6,479	0	1,179	0	37,438

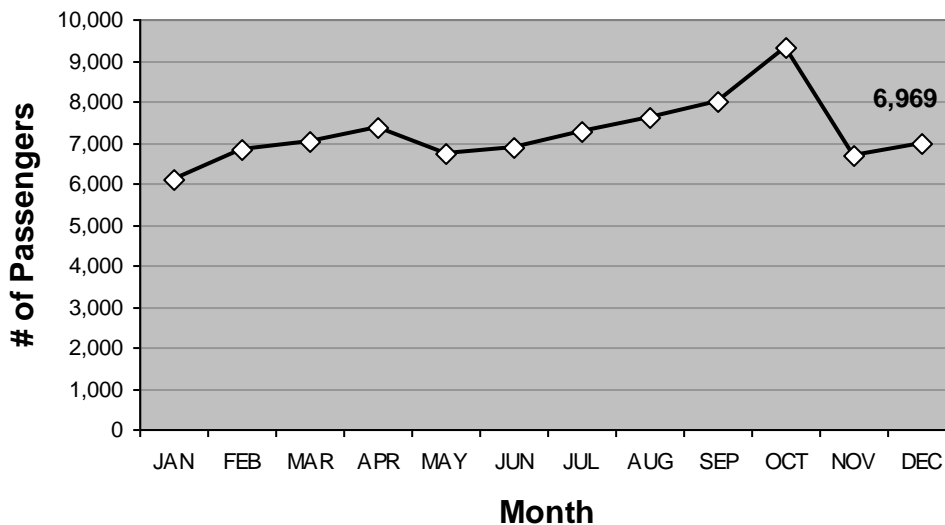
	Rt 1	Rt 2	Rt 3	Rt 4	Rt 5	Rt 6	All
Cash Regular	190	118	61	266	47	162	844
Cash Discount	582	161	115	844	283	230	2,215
Pass Regular	110	65	27	69	1	38	310
Pass Discount	200	93	1	172	2	75	543
Ticket Regular	175	69	62	83	13	58	460
Ticket Discount	219	132	14	218	43	86	712
Transfer	587	144	21	413	24	78	1,267
Promo	0	0	0	0	0	0	0
Free	42	45	15	44	13	30	189
Day Pass	80	32	7	47	9	56	231
Total Passenger #	2,185	859	323	2,156	435	813	6,771

# V. Ridership Trends

## Calaveras Transit Ridership



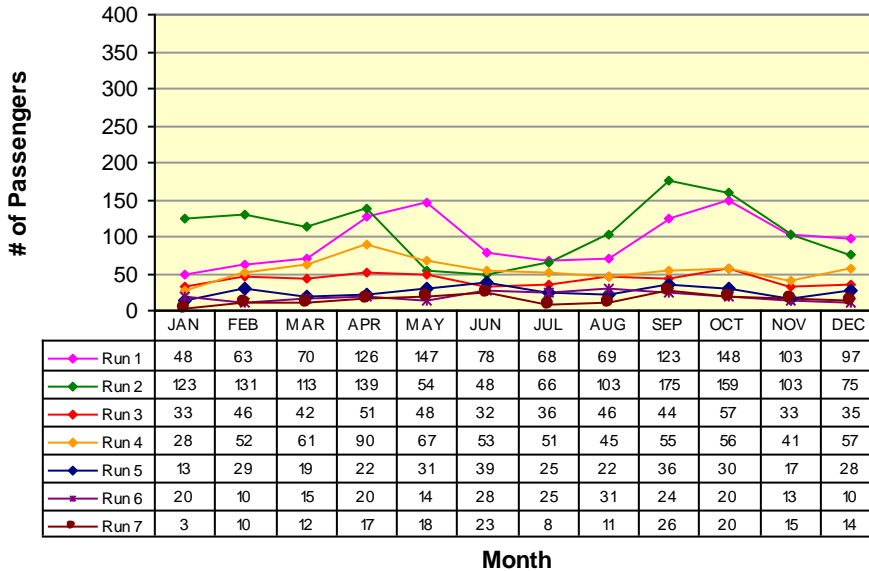
## Fixed Route Ridership



# ROUTE 1a

Rancho Calaveras / Valley Springs / San Andreas

## Route 1a(E) (La Contenta to San Andreas\*)



**RUN 1:**  
La Contenta 6:30am  
Govt Center 6:55am

**RUN 2:**  
Valley Oak Center 8:35am  
Govt Center 9:00am

**RUN 3:**  
La Contenta 11:45am  
Govt Center 12:20pm

**RUN 4:**  
La Contenta 1:35pm  
Govt Center 2:00pm

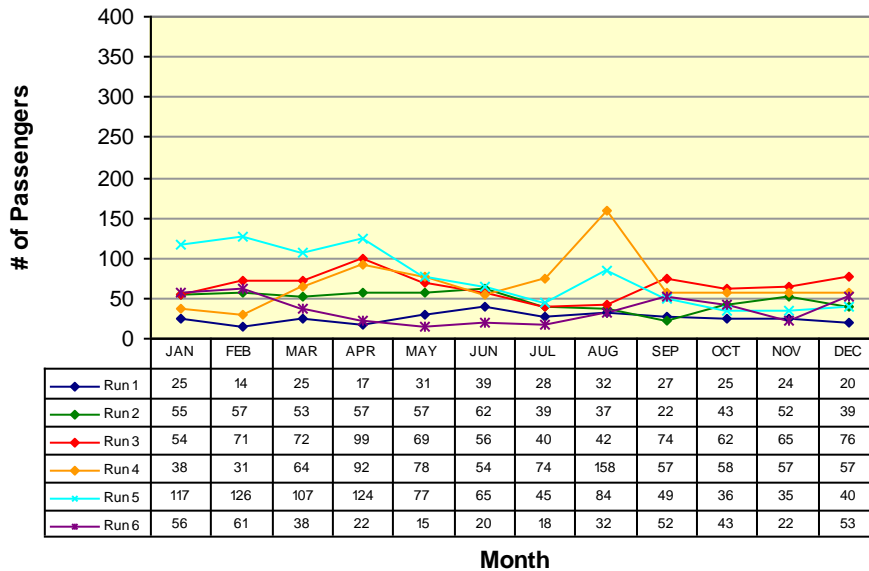
**RUN 5:**  
La Contenta 3:15pm  
Govt Center 3:40pm

**RUN 6:**  
La Contenta 4:45pm  
Govt Center 5:10pm

**RUN 7:**  
La Contenta 6:25pm  
Govt Center 6:50pm

\*Does not include Lodi Service runs

## Route 1a(W) (Government Center to La Contenta\*)



**RUN 1:**  
Govt Center 8:00am  
La Contenta 8:25am

**RUN 2:**  
Govt Center 11:20am  
La Contenta 11:45am

**RUN 3:**  
Govt Center 1:05pm  
La Contenta 1:30pm

**RUN 4:**  
Govt Center 2:50pm  
La Contenta 3:15pm

**RUN 5:**  
Govt Center 4:20pm  
La Contenta 4:45pm

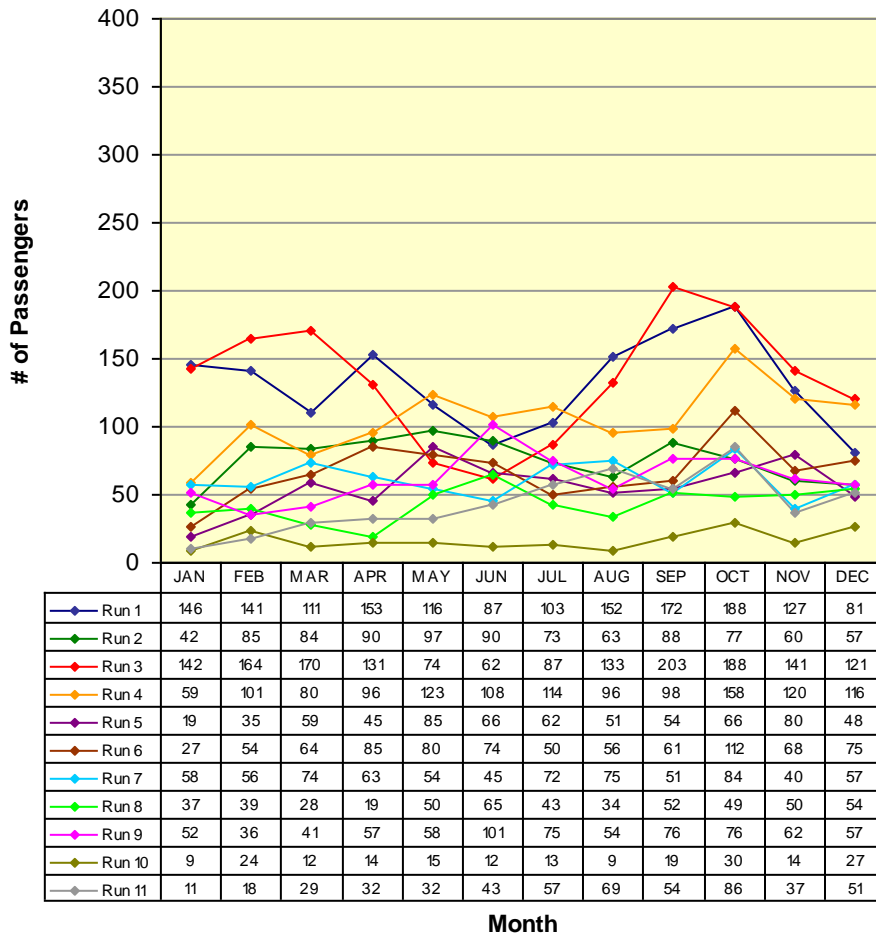
**RUN 6:**  
Govt Center 5:55pm  
La Contenta 6:25pm

\* Does not include Lodi Service runs

# ROUTE 1b

San Andreas / Angels Camp

## Route 1b(S) (San Andreas to Angels Camp)

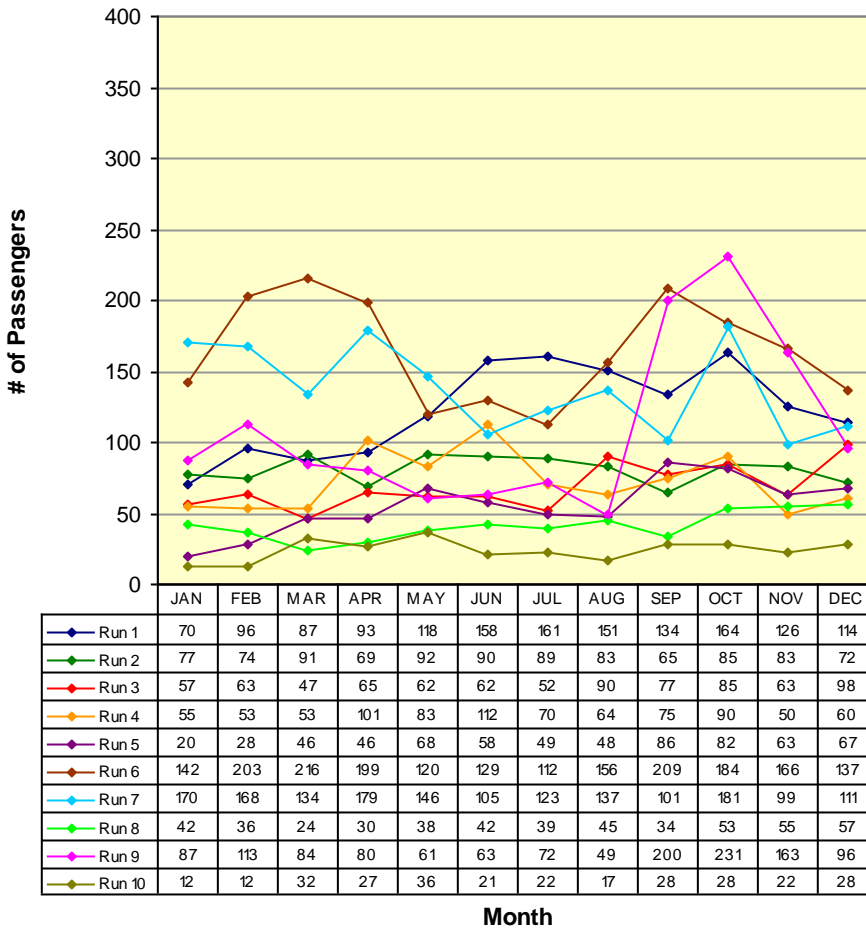


<b>RUN 1:</b>	Govt Center	6:55am
	Save Mart	7:15am
<b>RUN 2:</b>	Govt Center	7:55am
	Save Mart	8:20am
<b>RUN 3:</b>	Govt Center	9:00am
	Save Mart	9:20am
<b>RUN 4:</b>	Govt Center	11:38am
	Save Mart	11:55am
<b>RUN 5:</b>	Govt Center	12:15pm
	Save Mart	12:35pm
<b>RUN 6:</b>	Govt Center	2:00pm
	Save Mart	2:20pm
<b>RUN 7:</b>	Govt Center	2:40pm
	Save Mart	3:00pm
<b>RUN 8:</b>	Govt Center	3:40pm
	Save Mart	4:00pm
<b>RUN 9:</b>	Govt Center	5:10pm
	Save Mart	5:30pm
<b>RUN 10:</b>	Govt Center	6:50pm
	Save Mart	7:10pm
<b>RUN 11:</b>	Govt Center	7:40pm
	Save Mart	8:00pm

# ROUTE 1b

San Andreas / Angels Camp

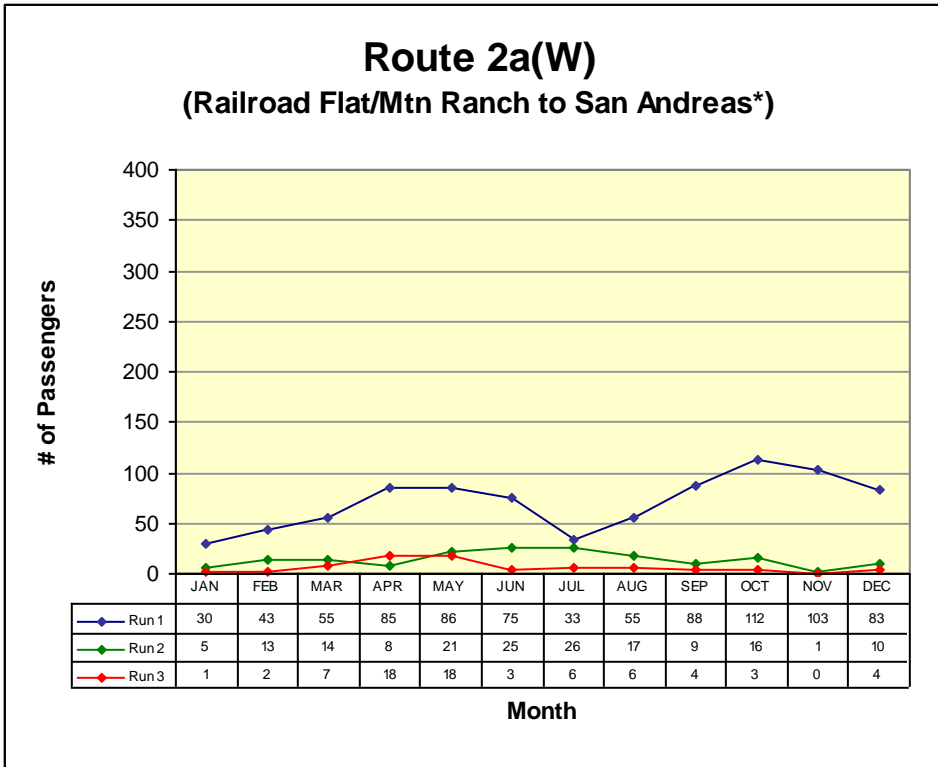
## Route 1b(N) (Angels Camp to San Andreas)



<b>RUN 1:</b>	
Save Mart	7:20am
Govt Center	7:55am
<b>RUN 2:</b>	
Save Mart	8:35am
Govt Center	9:00am
<b>RUN 3:</b>	
Save Mart	11:00am
Govt Center	11:20am
<b>RUN 4:</b>	
Save Mart	12:00pm
Govt Center	12:20pm
<b>RUN 5:</b>	
Save Mart	12:45pm
Govt Center	1:05pm
<b>RUN 6:</b>	
Save Mart	2:30pm
Govt Center	2:50pm
<b>RUN 7:</b>	
Save Mart	4:00pm
Govt Center	4:20pm
<b>RUN 8:</b>	
Save Mart	4:50pm
Govt Center	5:10pm
<b>RUN 9:</b>	
Save Mart	5:35pm
Govt Center	5:55pm
<b>RUN 10:</b>	
Save Mart	7:10pm
Govt Center	7:30pm

# ROUTE 2a

Railroad Flat / Mountain Ranch / San Andreas

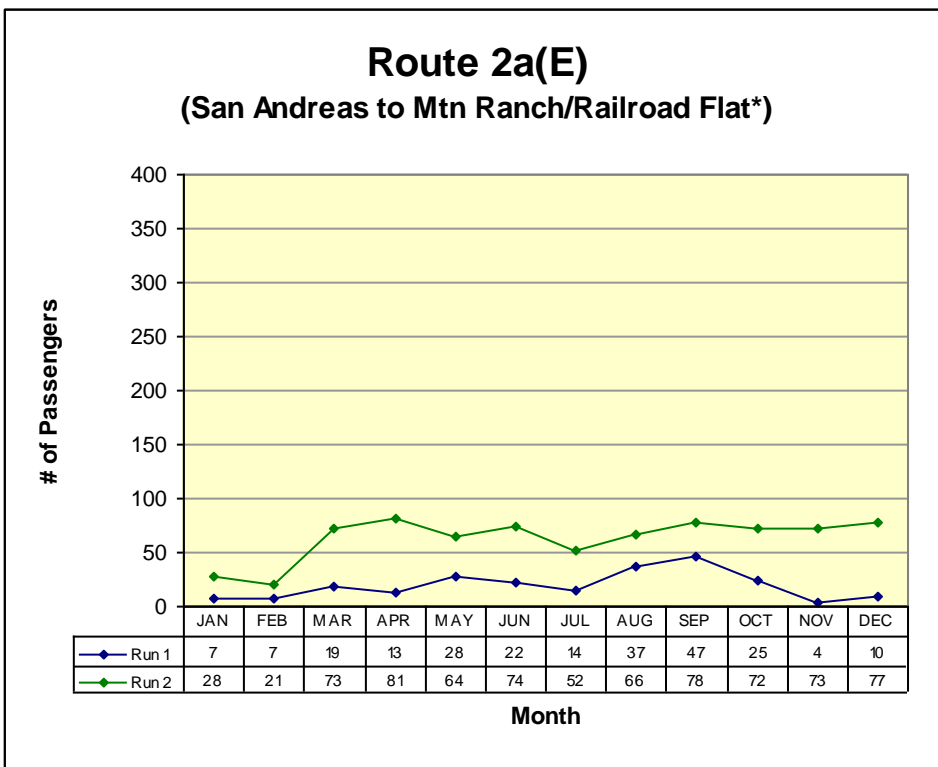


**RUN 1:**  
 Community Center 7:00am  
 Govt Center 7:40am

**RUN 2:**  
 Blunder Inn 9:10am  
 Govt Center 9:23am

**RUN 3:**  
 Community Center 6:15pm  
 Govt Center 6:45pm

*\*Not all runs begin in same location*



**RUN 1:**  
 Govt Center 8:48am  
 Blunder Inn 9:01am

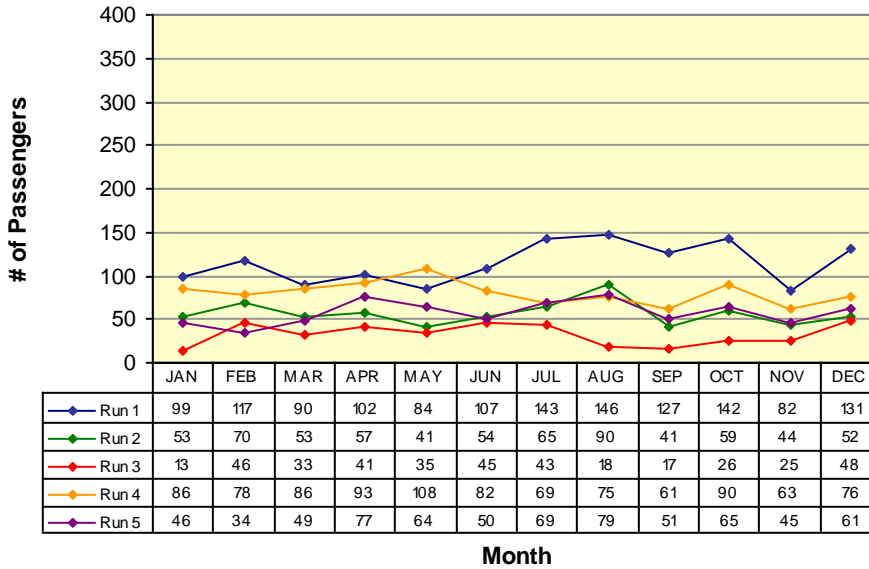
**RUN 2:**  
 Govt Center 5:45pm  
 Community Hall 6:30pm

*\*Not all runs end in same location*

# ROUTE 2b

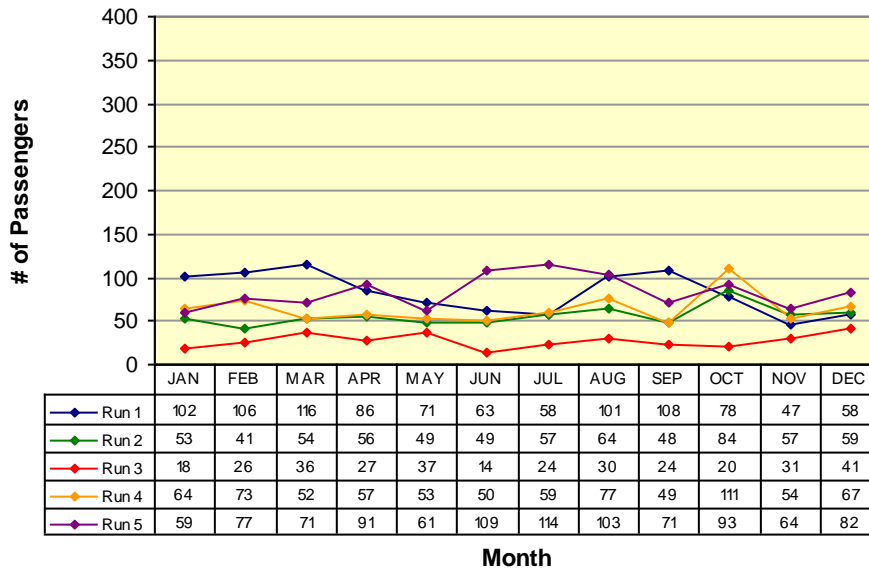
San Andreas / Mokelumne Hill / Jackson

## Route 2b(N) (San Andreas to Jackson)



<b>RUN 1:</b>	
Govt Center	7:40am
Raley's	8:13am
<b>RUN 2:</b>	
Govt Center	9:23am
Raley's	9:53am
<b>RUN 3:</b>	
Govt Center	11:00am
Raley's	11:33am
<b>RUN 4:</b>	
Govt Center	1:30pm
Raley's	2:03pm
<b>RUN 5:</b>	
Govt Center	4:10pm
Raley's	4:44pm

## Route 2b(S) (Jackson to San Andreas)

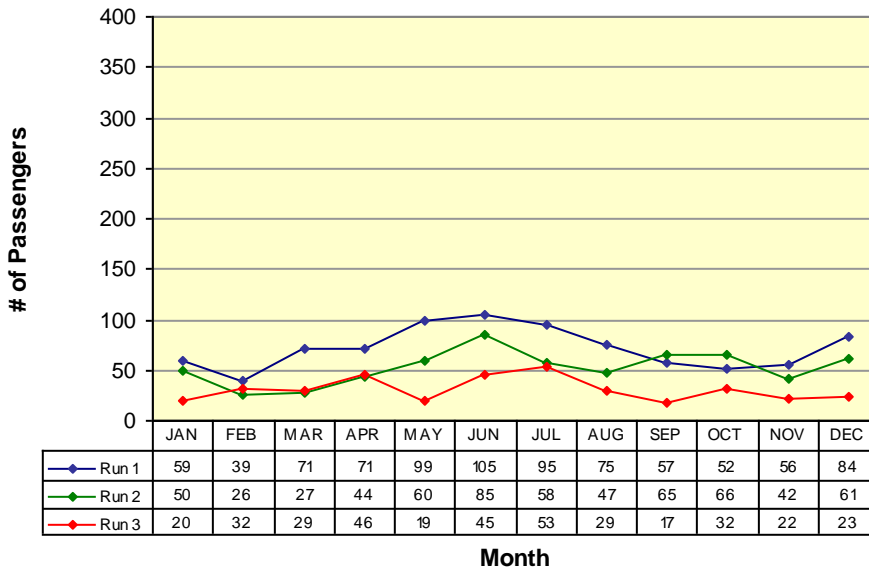


<b>RUN 1:</b>	
Raley's	8:18am
Govt Center	8:48am
<b>RUN 2:</b>	
Raley's	10:23am
Govt Center	10:53am
<b>RUN 3:</b>	
Raley's	11:40am
Govt Center	12:10pm
<b>RUN 4:</b>	
Raley's	2:07pm
Govt Center	2:37pm
<b>RUN 5:</b>	
Raley's	5:07pm
Govt Center	5:45pm

# ROUTE 3

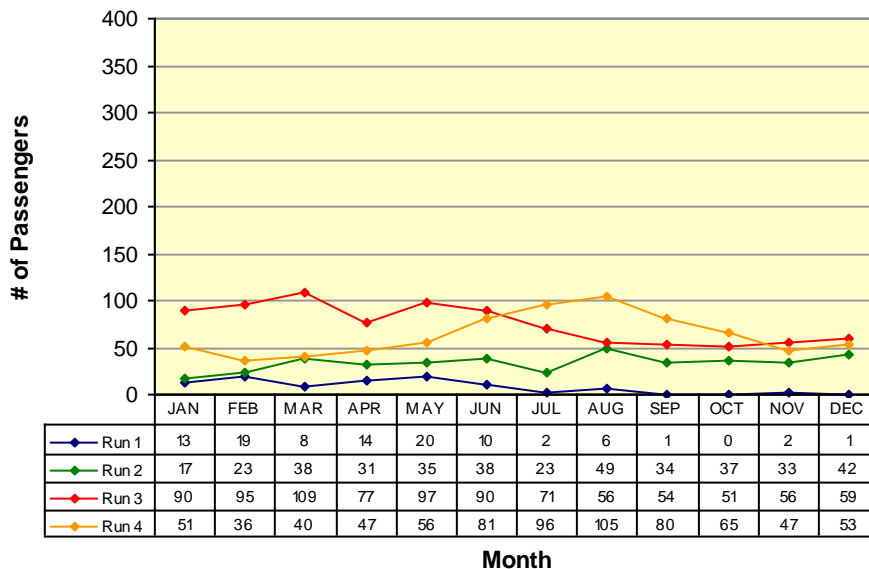
West Point / Glencoe / Mokelumne Hill / San Andreas

## Route 3(W) (West Point to San Andreas)



**RUN 1:**  
Community Hall 6:50am  
Govt Center 7:40am  
**RUN 2:**  
Community Hall 11:00am  
Govt Center 11:50am  
**RUN 3:**  
Community Hall 4:00pm  
Govt Center 4:50pm

## Route 3(E) (San Andreas to West Point)

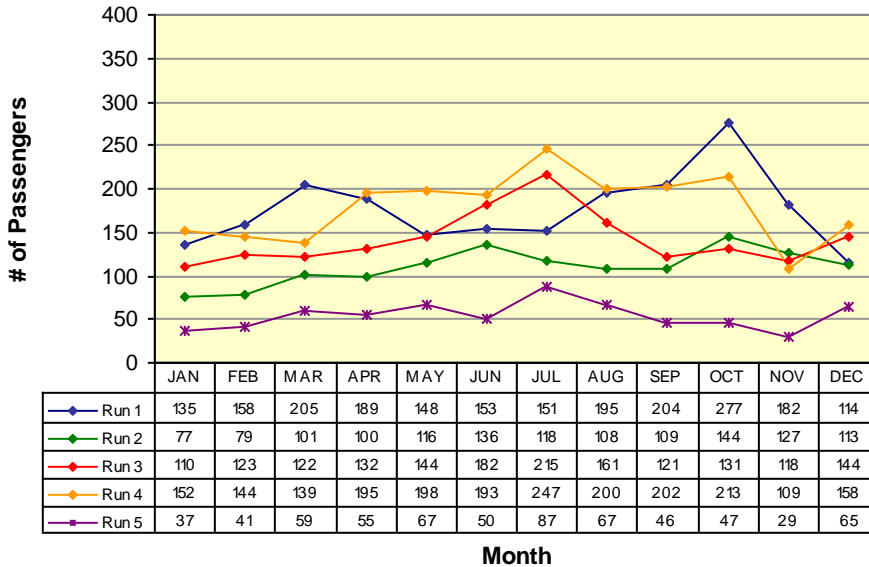


**RUN 1:**  
Moke Hill STP 6:15am  
Community Hall 6:50am  
**RUN 2:**  
Govt Center 10:00am  
Community Hall 10:50am  
**RUN 3:**  
Govt Center 3:00pm  
Community Hall 3:50pm  
**RUN 4:**  
Govt Center 5:20pm  
Community Hall 6:10pm

# ROUTE 4a

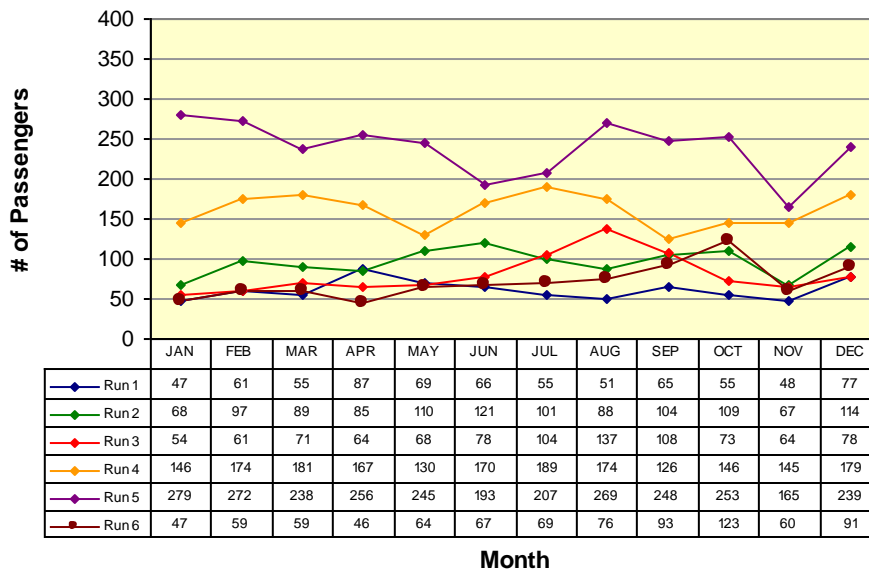
Arnold / Avery / Forest Meadows / Murphys / Angels Camp

## Route 4a(W) (Arnold to Angels Camp)



**RUN 1:**  
Post Office 6:15am  
Save Mart 7:15am  
**RUN 2:**  
Post Office 9:30am  
Save Mart 10:10am  
**RUN 3:**  
Post Office 12:00pm  
Save Mart 12:45pm  
**RUN 4:**  
Post Office 3:00pm  
Save Mart 4:00pm  
**RUN 5:**  
Post Office 6:25pm  
Save Mart 7:04pm

## Route 4a(E) (Angels Camp to Arnold)

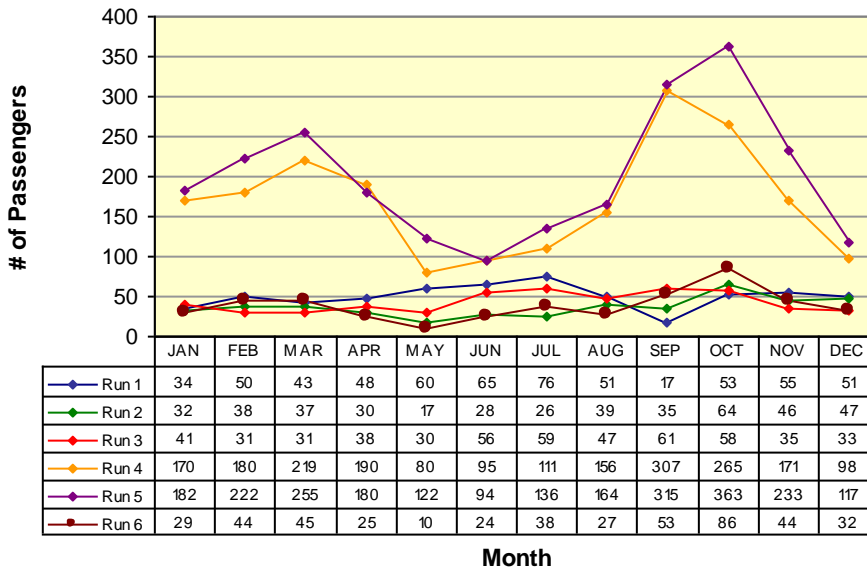


**RUN 1:**  
Save Mart 5:44am  
Post Office 6:15am  
**RUN 2:**  
Save Mart 8:35am  
Post Office 9:15am  
**RUN 3:**  
Save Mart 11:00am  
Post Office 11:40am  
**RUN 4:**  
Save Mart 2:20pm  
Post Office 3:00pm  
**RUN 5:**  
Save Mart 5:35pm  
Post Office 6:15pm  
**RUN 6:**  
Save Mart 9:47pm  
Post Office 10:27pm

# Route 4b

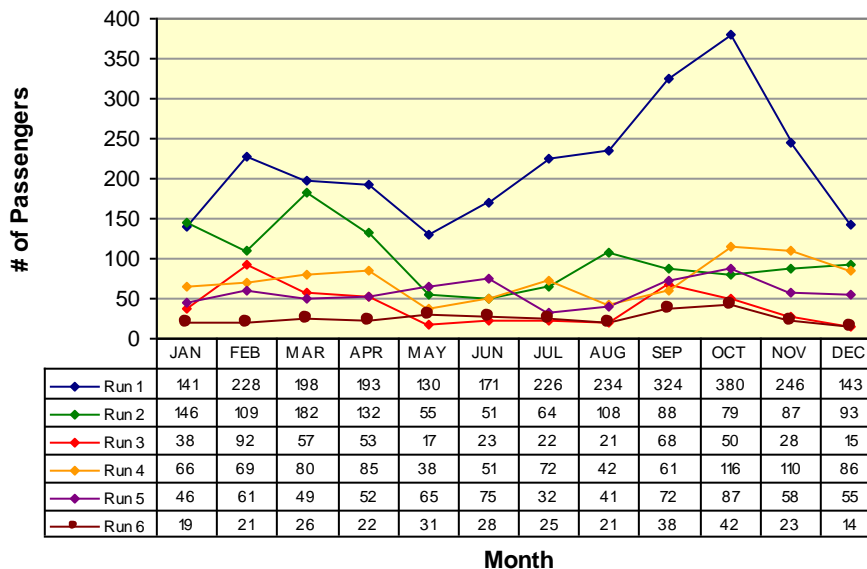
Angels Camp / Calaveras Center / Columbia College

## Route 4b(N) (Columbia College to Angels Camp)



<b>RUN 1:</b>	
Oak Pavilion	7:58am
Save Mart	8:35am
<b>RUN 2:</b>	
Oak Pavilion	10:18am
Save Mart	11:00am
<b>RUN 3:</b>	
Oak Pavilion	11:08am
Save Mart	12:00pm
<b>RUN 4:</b>	
Oak Pavilion	1:40pm
Save Mart	2:20pm
<b>RUN 5:</b>	
Oak Pavilion	5:00pm
Save Mart	5:35pm
<b>RUN 6:</b>	
Oak Pavilion	9:10pm
Save Mart	9:47pm

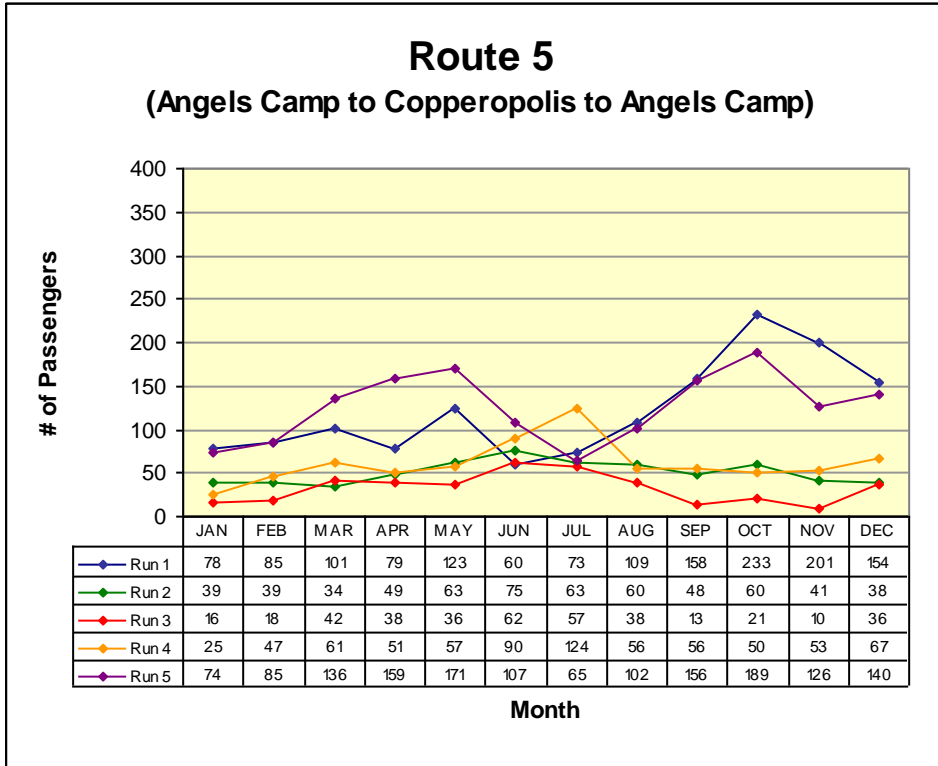
## Route 4b(S) (Angels Camp to Columbia College)



<b>RUN 1:</b>	
Save Mart	7:15am
Oak Pavilion	7:50am
<b>RUN 2:</b>	
Save Mart	9:30am
Oak Pavilion	10:10am
<b>RUN 3:</b>	
Save Mart	10:10am
Oak Pavilion	10:52am
<b>RUN 4:</b>	
Save Mart	12:45pm
Oak Pavilion	1:30pm
<b>RUN 5:</b>	
Save Mart	4:00pm
Oak Pavilion	4:42pm
<b>RUN 6:</b>	
Save Mart	8:20pm
Oak Pavilion	9:02pm

# Route 5

Angels Camp / Copperopolis / Angels Camp

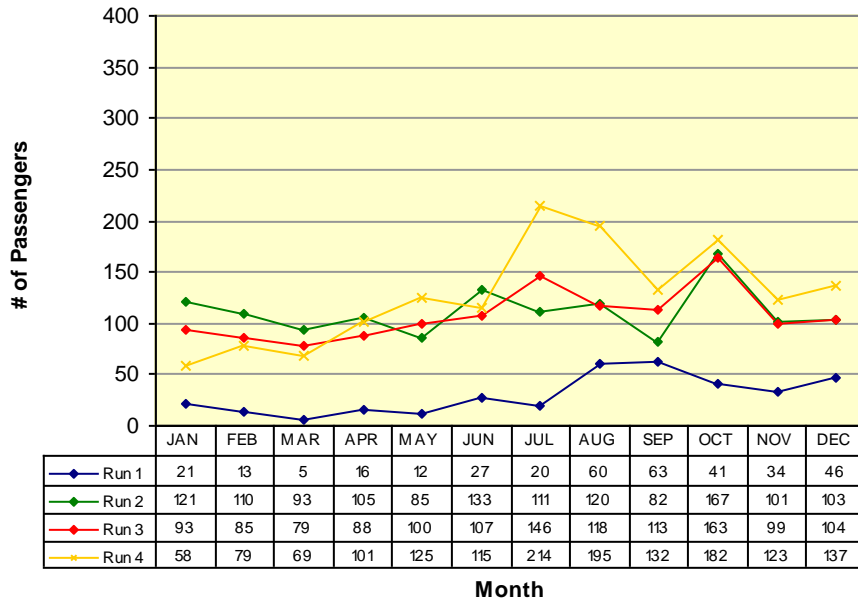


<b>RUN 1:</b>	
Save Mart	6:15am
Save Mart	7:15am
<b>RUN 2:</b>	
Save Mart	11:00am
Save Mart	12:00pm
<b>RUN 3:</b>	
Save Mart	12:00pm
Save Mart	1:00pm
<b>RUN 4:</b>	
Save Mart	3:00pm
Save Mart	4:00pm
<b>RUN 5:</b>	
Save Mart	5:35pm
Save Mart	6:35pm

# Route 6

San Andreas / Valley Springs / Wallace / Clements / Lockeford / Victor / Lodi

## San Andreas to Lodi (W)



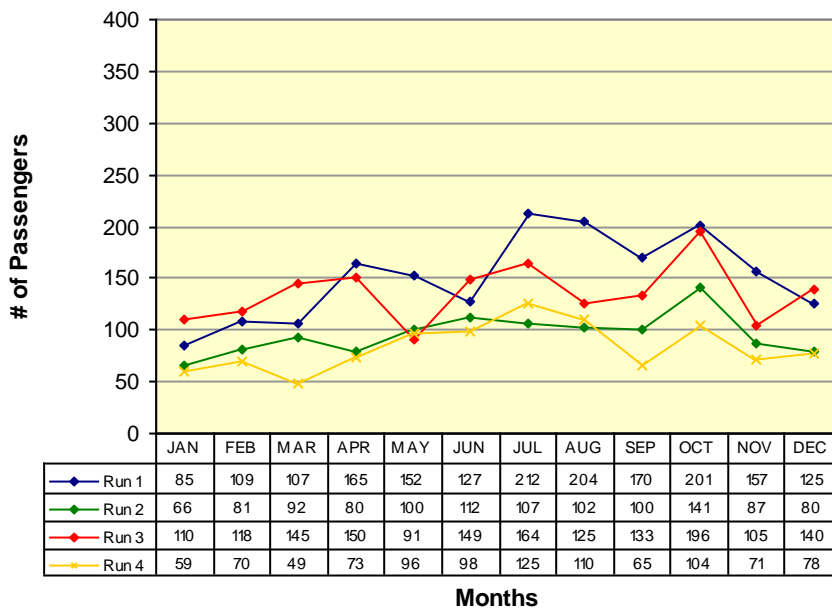
**RUN 1:**  
Govt Center 5:50am  
Lodi Station 6:45am

**RUN 2:**  
Govt Center 9:05am  
Lodi Station 10:15am

**RUN 3:**  
Govt Center 12:20pm  
Lodi Station 1:15pm

**RUN 4:**  
Govt Center 5:10pm  
Lodi Station 6:15pm

## Lodi to San Andreas (E)



**RUN 1:**  
Lodi Station 6:50am  
Govt Center 7:55am

**RUN 2:**  
Lodi Station 10:30am  
Govt Center 11:38am

**RUN 3:**  
Lodi Station 1:30pm  
Govt Center 2:40pm

**RUN 4:**  
Lodi Station 6:30pm  
Govt Center 7:40pm

## VI. Vehicles Report

<i>Vehicle #</i>	<i>End Miles</i>	<i>Miles this Month</i>	<i>Miles YTD</i>	<i>Fuel Mileage</i>	<i>Breakdown Frequency</i>	<i>Repair Costs</i>	<i>Major Components Repaired / Replaced</i>
Bus 442	250811	4221	26426	10.4	19397		
Bus 54	320113	4798	23990	10.5	16078		
Bus 55	303703	4090	25821	11.4	12813		
Bus 56	206898	6366	17125	11.7	11911		
Bus 57	239615	426	13925	14.8	0	Pending	Injectors (2) & turbo
Bus 58	23913	6473	21217	10.4	23913		
Bus 59	29842	0	26844	0.0	0		
Bus 60	37597	5678	34072	9.4	37597		
Bus 61	34500	6998	30399	9.6	34500		
Bus 62	34920	5623	30596	10.8	34920		

## VII. Service Disruption Summary

DATE	SCHED. TIME	ROUTE	BUS #	LOCATION	REASON	MINUTES DELAYED
12/1/08	1:00 PM	5	62	Save Mart	Flagdowns & deviations	20
12/2/08	2:40 PM	6	58	Govt Center	Mobility device	35
12/2/08	6:15 AM	4	61	Arnold	Flagdowns & deviations	17
12/2/08	6:50 AM	6	56	Lodi	Heavy fog	26
12/2/08	12:00 PM	5	57	Save Mart	Insufficient time on Copper run	20
12/2/08	1:00 PM	5	57	Save Mart	Insufficient time on Copper run	25
12/2/08	6:35 PM	5	60	Save Mart	Heavy fog	18
12/2/08	11:45 AM	1	60	Vista Del Lago	Bus trade	17
12/2/08	7:00 AM	2	60	Railroad Flat	Bus breakdown in yard	30
12/2/08	7:40 AM	2	60	Govt Center	Catching up from breakdown	25
12/2/08	8:18 AM	2	60	Raleys	Catching up from breakdown	23
12/2/08	8:48 AM	2	60	Govt Center	Catching up from breakdown	30
12/2/08	9:10 AM	2	60	Mt. Ranch	Catching up from breakdown	23
12/2/08	9:23 AM	2	60	Govt Center	Catching up from breakdown	26

## VII. Service Disruption Summary

DATE	SCHED. TIME	ROUTE	BUS #	LOCATION	REASON	MINUTES DELAYED
12/2/08	9:53	2	60	Raleys	Catching up from breakdown	27
12/2/08	16:00	1	55	Save Mart	Flagdowns & deviations	20
12/3/08	13:30	6	56	Lodi	Bus trade	30
12/3/08	14:40	6	56	Govt Center	Catching up from bus trade	35
12/3/08	6:15	4	62	Arnold	Flagdowns & deviations	24
12/3/08	16:00	5	61	Save Mart	Insufficient time on Copper run	18
12/3/08	13:00	5	58	Save Mart	Insufficient time on Copper run	20
12/3/08	17:45	2	62	Govt Center	Waiting for transfers	16
12/4/08	14:40	6	56	Govt Center	Mobility device	26
12/4/08	6:15	4	58	Arnold	Flagdowns & deviations	22
12/4/08	14:37	2	58	Govt Center	Mobility device	38
12/4/08	6:50	6	56	Lodi	Fog	20
12/4/08	12:00	5	60	Save Mart	Bus trade	23
12/4/08	13:00	5	60	Save Mart	Catching up from bus trade	34

## VII. Service Disruption Summary

DATE	SCHED. TIME	ROUTE	BUS #	LOCATION	REASON	MINUTES DELAYED
12/4	11:45	1	61	Vista Del Lago	Road work	16
12/4	12:15	1	61	Govt Center	Catching up from road work	17
12/4	15:15	1	442	Vista Del Lago	Waiting for transfers	16
12/5	14:20	4	60	Save Mart	Waiting for transfers	16
12/5	15:00	4	60	Arnold	Catching up from transfers	24
12/5	16:00	4	60	Save Mart	Catching up from transfers	22
12/5	16:00	1	54	Save Mart	Waiting for transfers	19
12/5	16:20	1	54	Govt Center	Catching up from transfers	24
12/8	14:40	6	58	Govt Center	Mobility device	40
12/8	18:25	4	61	Arnold	Flagdowns & deviations	20
12/8	6:15	4	61	Arnold	Flagdowns & deviations	17
12/8	12:00	5	54	Save Mart	Flagdowns & deviations	20
12/8	13:00	5	54	Save Mart	Insufficient time on Copper run	25
12/8	6:15	3	62	Moke Hill	Bus trade	21

## VII. Service Disruption Summary

DATE	SCHED. TIME	ROUTE	BUS #	LOCATION	REASON	MINUTES DELAYED
12/8	17:45	2	54	Save Mart	Waiting for transfers	20
12/8	8:35	4	56	Save Mart	Repair valve stem	20
12/8	9:30	4	56	Arnold	Catching up from repair	16
12/8	10:10	4	56	Save Mart	Catching up from repair	17
12/10	19:04	4	56	Save Mart	Flagdowns & deviations	34
12/10	12:00	5	55	Save Mart	Insufficient time on Copper run	18
12/10	13:00	5	55	Save Mart	Insufficient time on Copper run	24
12/10	15:00	3	55	Govt Center	Driver unavailable	22
12/10	15:00	4	442	Arnold	Flagdowns & deviations	16
12/11	14:40	6	56	Govt Center	Mobility device	20
12/11	19:04	4	56	Save Mart	Flagdowns & deviations	21
12/11	6:15	4	58	Arnold	Flagdowns & deviations	18
12/11	17:45	2	61	Govt Center	Waiting for transfers	17
12/12	6:15	4	61	Arnold	Flagdowns & deviations	18

## VII. Service Disruption Summary

DATE	SCHED. TIME	ROUTE	BUS #	LOCATION	REASON	MINUTES DELAYED
12/12/08	12:00 PM	5	60	Save Mart	Insufficient time on Copper run	17
12/12/08	1:00 PM	5	60	Save Mart	Insufficient time on Copper run	23
12/12/08	6:35 PM	5	62	Save Mart	Insufficient time on Copper run	23
12/12/08	5:45 PM	2	61	Govt Center	Waiting for transfers	18
12/15/08	2:40 PM	6	61	Govt Center	Mobility device	25
12/15/08	6:25 PM	4	58	Arnold	Snow	145
12/15/08	7:04 PM	4	58	Save Mart	Snow	123
12/15/08	8:20 PM	4	58	Save Mart	Catching up from snow	77
12/15/08	9:10 PM	4	58	Columbia	Catching up from snow	60
12/15/08	9:47 PM	4	58	Save Mart	Catching up from snow	47
12/15/08	10:27 PM	4	58	Arnold	Snow	86
12/15/08	1:00 PM	5	58	Save Mart	Insufficient time on Copper run	23
12/15/08	6:50 AM	3	55	West Point	Broken tire chain	72
12/15/08	7:40 AM	3	55	Govt Center	Catching up from broken chain	80

## VII. Service Disruption Summary

DATE	SCHED. TIME	ROUTE	BUS #	LOCATION	REASON	MINUTES DELAYED
12/15/08	7:40 AM	2	442	Govt Center	Snow	16
12/15/08	8:48 AM	2	442	Govt Center	Catching up from snow	20
12/15/08	9:30 AM	4	56	Arnold	Snow	100
12/15/08	10:10 AM	4	56	Save Mart	Snow	190
12/15/08	11:08 AM	4	-	Columbia	Cancelled due to snow	-
12/15/08	3:00 PM	4	56	Arnold	Snow	80
12/15/08	4:00 PM	4	56	Save Mart	Stuck in snow	170
12/16/08	7:04 PM	4	62	Save Mart	Flagdowns & deviations	26
12/16/08	5:44 AM	4	56	Save Mart	Late start out of yard	30
12/16/08	6:15 AM	4	56	Arnold	Late start and snow	64
12/16/08	7:15 AM	4	56	Save Mart	Catching up from snow	56
12/16/08	7:58 AM	4	56	Columbia	Catching up from snow	47
12/16/08	8:35 AM	4	56	Save Mart	Catching up from snow	54
12/16/08	7:15 AM	5	60	Save Mart	Driver got lost in Copper	51

## VII. Service Disruption Summary

DATE	SCHED. TIME	ROUTE	BUS #	LOCATION	REASON	MINUTES DELAYED
12/16/08	12:00 PM	5	62	Save Mart	Insufficient time on Copper run	18
12/16/08	1:00 PM	5	62	Save Mart	Insufficient time on Copper run	22
12/16/08	12:45 PM	1	60	Save Mart	Waiting for transfers	16
12/16/08	5:45 PM	2	58	Govt Center	Waiting for transfers	33
12/16/08	6:30 PM	2	58	Railroad Flat	Catching up from transfers	22
12/16/08	9:30 AM	4	54	Arnold	Snow	41
12/16/08	10:10 AM	4	54	Save Mart	Catching up from snow	72
12/16/08	11:08 AM	4	54	Columbia	Catching up from snow	52
12/16/08	12:45 PM	4	54	Save Mart	Catching up from snow	17
12/17/08	2:40 PM	6	56	Govt Center	Mobility device	28
12/17/08	6:25 PM	4	61	Arnold	Accident on road	20
12/17/08	7:04 PM	4	61	Save Mart	Catching up from accident	36
12/17/08	6:15 AM	4	58	Arnold	Flagdowns & deviations	19
12/17/08	12:00 PM	5	60	Save Mart	Insufficient time on Copper run	19

## VII. Service Disruption Summary

DATE	SCHED. TIME	ROUTE	BUS #	LOCATION	REASON	MINUTES DELAYED
12/17/08	1:00 PM	5	60	Save Mart	Insufficient time on Copper run	25
12/18/08	12:00 PM	1	56	Save Mart	Mobility device	26
12/18/08	12:20 PM	6	56	Govt Center	Catching up from mobility device	25
12/18/08	1:30 PM	6	56	Lodi	Mobility device	25
12/18/08	2:40 PM	6	56	Govt Center	Catching up from mobility device	50
12/18/08	7:04 PM	4	62	Save Mart	Flagdowns & deviations	26
12/18/08	6:15 AM	4	62	Arnold	Flagdowns & deviations	28
12/18/08	5:50 AM	6	56	Govt Center	Late start out of yard	27
12/18/08	6:50 AM	6	56	Lodi	Late start out of yard	32
12/18/08	12:00 PM	5	58	Save Mart	Waiting for transfers	26
12/18/08	1:00 PM	5	58	Save Mart	Waiting for transfers	30
12/18/08	1:35 PM	1	55	Vista Del Lago	Mobility device	17
12/19/08	2:40 PM	6	61	Govt Center	Mobility device	25
12/19/08	7:04 PM	4	62	Govt Center	Flagdowns & deviations	21

## VII. Service Disruption Summary

DATE	SCHED. TIME	ROUTE	BUS #	LOCATION	REASON	MINUTES DELAYED
12/19/08	6:15 AM	4	62	Arnold	Snow	55
12/19/08	7:15 AM	4	62	Save Mart	Catching up from snow	50
12/19/08	7:58 AM	4	62	Columbia	Catching up from snow	50
12/19/08	8:35 AM	4	62	Save Mart	Catching up from snow	42
12/19/08	1:00 PM	5	60	Save Mart	Insufficient time on Copper run	19
12/19/08	9:30 AM	4	58	Arnold	Snow	33
12/19/08	10:10 AM	4	58	Save Mart	Catching up from snow	50
12/19/08	11:08 AM	4	58	Columbia	Catching up from snow	28
12/22/08	2:40 PM	6	56	Govt Center	Mobility device	35
12/22/08	7:04 PM	4	61	Save Mart	Snow	26
12/22/08	10:27 PM	4	61	Arnold	Snow	33
12/22/08	6:15 AM	4	61	Arnold	Snow	39
12/22/08	7:15 AM	4	61	Save Mart	Snow	39
12/22/08	7:58 AM	4	61	Columbia	Catching up from snow	16

## VII. Service Disruption Summary

DATE	SCHED. TIME	ROUTE	BUS #	LOCATION	REASON	MINUTES DELAYED
12/22/08	8:35 AM	4	60	Save Mart	Chain training	34
12/22/08	9:30 AM	4	60	Arnold	Snow	52
12/22/08	10:10 AM	4	60	Save Mart	Snow	80
12/22/08	11:08 AM	4	60	Columbia	Catching up from snow	57
12/22/08	3:00 PM	4	60	Arnold	Flagdowns & deviations	16
12/23/08	5:00 PM	4	61	Columbia	Power lines on road	36
12/23/08	5:35 PM	4	61	Save Mart	Catching up from power lines	35
12/23/08	6:25 PM	4	61	Arnold	Catching up from power lines	50
12/23/08	7:04 PM	4	61	Save Mart	Catching up from power lines	61
12/23/08	6:15 AM	4	61	Arnold	Snow	25
12/23/08	7:15 AM	4	61	Save Mart	Catching up from snow	20
12/23/08	12:00 PM	5	442	Save Mart	Insufficient time on Copper run	19
12/23/08	1:00 PM	5	442	Save Mart	Insufficient time on Copper run	22
12/23/08	7:00 AM	2	54	Railroad Flat	Snow	20

## VII. Service Disruption Summary

DATE	SCHED. TIME	ROUTE	BUS #	LOCATION	REASON	MINUTES DELAYED
12/23/08	7:40 AM	2	54	Govt Center	Catching up from snow	26
12/23/08	8:18 AM	2	54	Raleys	Catching up from snow	20
12/23/08	9:30 AM	4	60	Arnold	Snow	26
12/23/08	10:10 AM	4	60	Save Mart	Catching up from snow	51
12/23/08	11:08 AM	4	60	Columbia	Catching up from snow	35
12/23/08	1:40 PM	4	60	Columbia	Road closed - power lines down	-
12/26/08	6:25 PM	4	62	Arnold	Icy roads	20
12/26/08	7:04 PM	4	62	Save Mart	Catching up from icy roads	31
12/26/08	6:15 AM	4	62	Arnold	Icy roads	20
12/26/08	1:00 PM	5	60	Save Mart	Insufficient time on Copper run	19
12/26/08	9:30 AM	4	55	Arnold	Icy roads	40
12/26/08	10:10 AM	4	55	Save Mart	Catching up from icy roads	72
12/26/08	11:08 AM	4	55	Columbia	Catching up from icy roads	43
12/26/08	12:00 PM	4	55	Save Mart	Catching up from icy roads	30

## VII. Service Disruption Summary

DATE	SCHED. TIME	ROUTE	BUS #	LOCATION	REASON	MINUTES DELAYED
12/26/08	3:00 PM	4	55	Arnold	Flagdowns & deviations	17
12/26/08	4:00 PM	4	55	Save Mart	Catching up from deviations	22
12/29/08	2:40 PM	6	61	Govt Center	Mobility device	25
12/29/08	6:15 AM	4	58	Arnold	Flagdowns & deviations	17
12/30/08	2:40 PM	6	62	Govt Center	Mobility device	20
12/30/08	7:04 PM	4	56	Save Mart	Flagdowns & deviations	21
12/30/08	6:15 AM	4	56	Arnold	Flagdowns & deviations	21
12/30/08	3:00 PM	4	61	Arnold	Flagdowns & deviations	16
12/30/08	4:00 PM	1	54	Save Mart	Deviations	16
12/31/08	7:04 PM	4	60	Save Mart	Fog	21
12/31/08	6:15 AM	4	62	Arnold	Flagdowns & deviations	16
12/31/08	6:50 AM	6	61	Lodi	Fog	17
12/31/08	7:55 AM	6	61	Govt Center	Catching up from fog	18
12/31/08	9:10 AM	2	54	Mt. Ranch	Accident on road	16



# VIII. Fleet Maintenance Report

Identified Concern	Bus	Date Filed	Action Taken	Date Reconciled	Completed By
Injector malfunction	57	1-Nov	Replace injectors	Pending	
Inspection	62	4-Dec	B service inspection, replace bike rack indicator lamp	4-Dec	RB
Inspection	60	4-Dec	B service inspection, adjust headlights, replace bike rack indicator lamp, replace missing emergency window decal	4-Dec	RB
Inspection	58	5-Dec	C service inspection, replace bike rack indicator lamp	5-Dec	RB
Water leak	55	9-Dec	Replace water pump, thermostat and coolant; replace camshaft position sensor; replace wiper blades	9-Dec	RB
Inspection	56	10-Dec	A service inspection, replace front tires, repair bike rack indicator, removed drop down chains for overhaul	10-Dec	RB
Inspection	54	11-Dec	A service inspection, replace w/c lift door interior lamp assy., replace aux. heater core and hoses	18-Dec	RB
Inspection	61	17-Dec	D service inspection, replace bike rack indicator lamp, replace emergency window decal, replace pendant mounting button, reseal and install fuel filler extension	17-Dec	RB
Inspection	442	22-Dec	B service inspection, replace engine oil and filter, replace right rear axle seal, bearings, and races, repair two broken axle bolts, replace right rear brake rotor, replace front sway bar end bushings, repair emergency window latch, found window frame cracked (temporary repair), replace front tires	23-Dec	RB
Inspection	60	26-Dec	A service inspection	26-Dec	RB
Inspection	58	27-Dec	A service inspection	27-Dec	RB
Inspection	62	28-Dec	A service inspection, inspect driver's headlamp, clean and repair connection	28-Dec	RB
Inspection	56	30-Dec	E service inspection, deferred fluid and filter changes until next service (previously done with engine change on 9/15/08)	30-Dec	RB
Inspection	55	31-Dec	B service inspection, inspected w/c door light out (part ordered)	31-Dec	RB

## IX. Wheelchair Lift Use

For the month of: December 2008

Date	Vehicle #	Pick up Point	Drop off Point	Pick-up time	Drop-off time	Uses
12/1	61	Treats	Lodi	1232	1338	2
12/2	58	Lodi	Wallace	1330	1420	2
12/2	58	Lodi	Double Springs Rd.	1350	1450	2
12/4	56	Lodi	Double Springs Rd.	1340	1441	2
12/4	58	Bear Mt. Apts.	Dr. Oliver	1448	1510	2
12/4	60	Dr. Oliver	Bear Mt. Apts.	1610	1630	2
12/8	58	Lodi	Double Springs Rd.	1350	1450	2
12/11	56	Lodi	Double Springs Rd.	1342	1450	2
12/12	56	Lodi	Double Springs Rd.	1346	1449	2
12/15	61	Lodi	Double Springs Rd.	1345	1455	2
12/16	61	Lodi	Double Springs Rd.	1340	1444	2
12/17	56	Lodi	Wallace	1344	1425	2
12/18	56	S.A. Post Office	Senior Center	1145	1200	2
12/18	55	Senior Center	H.S. Street	1310	1325	2
12/18	56	Lodi	Double Springs Rd.	1400	1520	2
12/19	61	Lodi	Double Springs Rd.	1350	1455	2
12/22	56	Lodi	Double Springs Rd.	1345	1505	2
12/29	61	Lodi	Double Springs Rd.	1350	1455	2