



Monthly Operations Report



MV Transportation, Inc.

I. Project Manager's Summary

From: Annie Self, Calaveras Transit General Manager
MV Transportation, Inc.
750 Industrial Way - P. O. Box 1385
San Andreas, Ca 95249
Phone (209) 754-4450
Fax (209) 754-9086

To: Calaveras County
C/o Jamie Azarvand
Transit Manager, Public Works
891 Mountain Ranch Road
San Andreas, CA 95249

On time performance checks:

On time performance was checked throughout the month of October. On time percentage for service in October was 97%.

Trends:

When comparing Fixed Route ridership in September and October, we found there were 1,329 more passenger trips in October than in September.

Route 1 had 2,701 passenger trips in September and 3,054 passenger trips in October. There was an increase of 353 passenger trips on Route 1 in October.

Route 2 had 823 passenger trips in September and 996 passenger trips in October. There was an increase of 173 passenger trips on Route 2 in October.

Route 3 had 308 passenger trips in September and 303 passenger trips in October. There was a decrease of 5 passenger trips on Route 3 in October.

Route 4 had 2,865 passenger trips in September and 3,214 passenger trips in October. There was an increase of 349 passenger trips on Route 4 in October.

Route 5 (Copperopolis) had 431 passenger trips in September and 553 passenger trips in October. There was an increase of 122 passenger trips on Route 5 in October.

Route 6 (Lodi) had 858 passenger trips in September and 1,195 passenger trips in October. There was an increase of 337 passenger trips on Route 6 in October.

Route Cancellations:

10/22 10:00 Route 3 bus from San Andreas to West Point
11:00 Route 3 bus from West Point to San Andreas

10/23 10:00 Route 3 bus from San Andreas to West Point
11:00 Route 3 bus from West Point to San Andreas

Comments/Compliments/Complaints:

There was 1 compliment in October for polite drivers. This compliment was for several operators. Appropriate commendations have been placed in the operators files.

There were 4 complaints in October. 3 related to buses being late, and 1 related to poor driver conduct. All operators associated with these complaints were counseled, and future performance will be monitored.

Safety and Training:

The Safety Meetings for the month of October were held on Wednesday October 15th 2008. The main focus of these meetings was the Smith System 5 Keys to Defensive Driving.

There were two backing preventable incidents the month of October. Both incidents occurred in the operations yard while operators were backing. New procedures were implemented to ensure there will be no future occurrences of this type.

Overview:

Even with fuel prices beginning to drop, we continued to see record passenger trips, and broke the 9,000 total for passenger trips for the month of October.

III. Deposit Summary

Current Month Deposit Summary

Date	Collection Period	Tickets	DAR	Fixed Rt	Special	Total
10/3	10/1 - 10/2	\$513.00		\$535.50		\$1,048.50
10/7	10/3	\$74.00		\$198.00		\$272.00
10/8	10/6	\$130.00		\$221.00		\$351.00
10/10	10/7 - 10/9	\$1,663.25		\$622.75		\$2,286.00
10/15	10/10, 10/13	\$52.50		\$346.50		\$399.00
10/16	10/14 - 10/15	\$212.00		\$221.50		\$433.50
10/21	10/16 - 10/17	\$182.00		\$354.50		\$536.50
10/22	10/20 - 10/21	\$50.00		\$357.00		\$407.00
10/27	10/22 - 10/24	\$71.25		\$596.50		\$667.75
10/30	10/27 - 10/28	\$147.00		\$366.50		\$513.50
10/31	10/29 - 10/30	\$14.00		\$419.50		\$433.50
11/3	10/31	\$910.00		\$176.50		\$1,086.50
						\$0.00
						\$0.00
						\$0.00
						\$0.00
		\$4,019.00	\$0.00	\$4,415.75	\$0.00	\$8,434.75

Notes:

October 1st deposit for September vault count

Matches county deposit records?

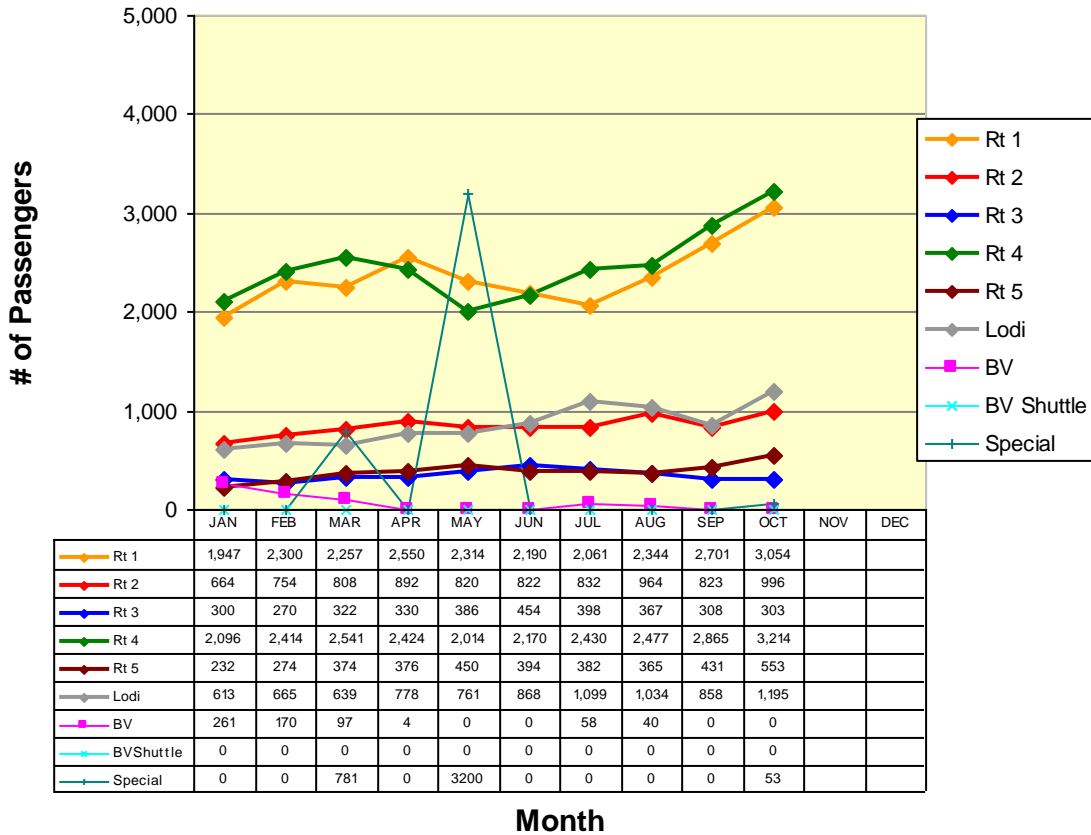
IV. Current Month Operational Statistics

	Fixed Rt.	Lodi	Special	Bear Valley	BV Shuttle	Total
Ridership	8119	1195	53	0	0	9,367
Vehicle Hours	1494.85	243.70	9.75	0.00	0.00	1,748.30
Vehicle Service Hours	1121.50	208.42	9.25	0.00	0.00	1,339.17
Operating Days	23	23	1	0	0	24
Vehicle Service Miles	33,013	6,938	87	0	0	40,038

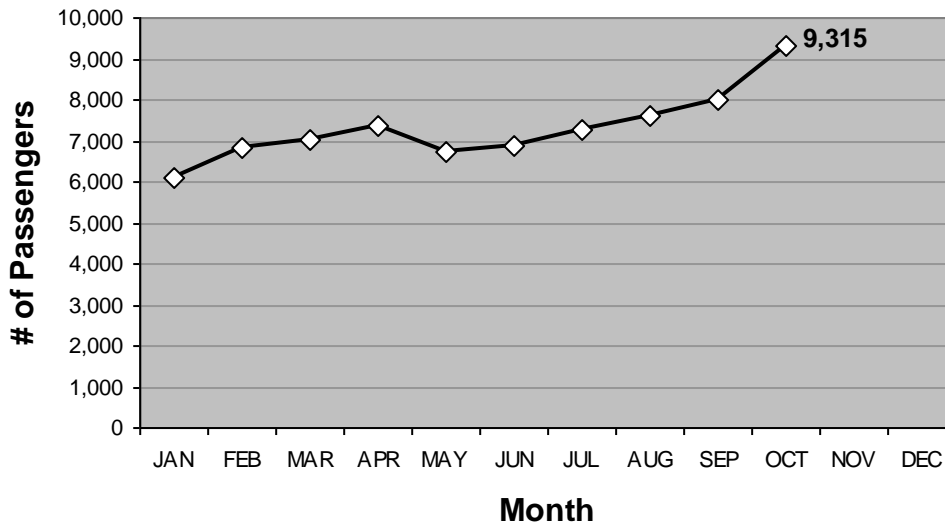
	Rt 1	Rt 2	Rt 3	Rt 4	Rt 5	Rt 6	All
Cash Regular	317	151	77	347	36	190	1,118
Cash Discount	601	220	118	1,363	328	315	2,945
Pass Regular	181	66	23	115	5	46	436
Pass Discount	289	156	3	280	24	116	868
Ticket Regular	226	74	20	92	25	74	511
Ticket Discount	370	127	6	374	70	153	1,100
Transfer	858	122	43	551	39	225	1,838
Promo	0	0	0	0	0	0	0
Free	135	30	5	59	23	41	293
Day Pass	77	50	8	33	3	35	206
Total Passenger #	3,054	996	303	3,214	553	1,195	9,315

V. Ridership Trends

Calaveras Transit Ridership



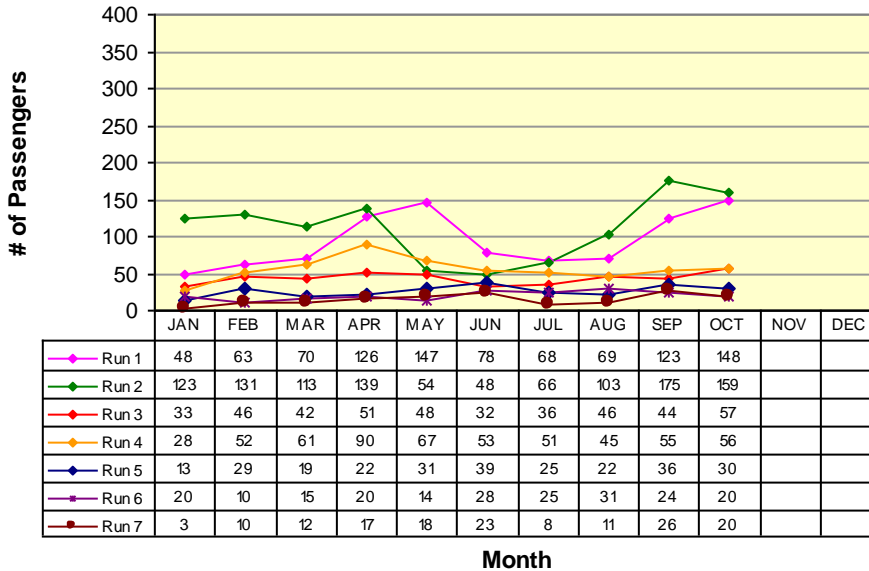
Fixed Route Ridership



ROUTE 1a

Rancho Calaveras / Valley Springs / San Andreas

Route 1a(E) (La Contenta to San Andreas*)



RUN 1:
La Contenta 6:30am
Govt Center 6:55am

RUN 2:
Valley Oak Center 8:35am
Govt Center 9:00am

RUN 3:
La Contenta 11:45am
Govt Center 12:20pm

RUN 4:
La Contenta 1:35pm
Govt Center 2:00pm

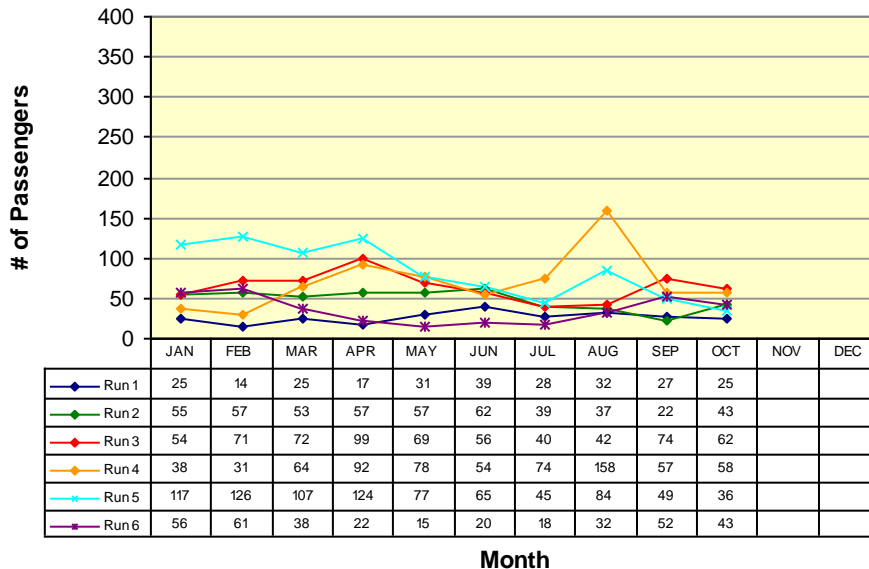
RUN 5:
La Contenta 3:15pm
Govt Center 3:40pm

RUN 6:
La Contenta 4:45pm
Govt Center 5:10pm

RUN 7:
La Contenta 6:25pm
Govt Center 6:50pm

*Does not include Lodi Service runs

Route 1a(W) (Government Center to La Contenta*)



RUN 1:
Govt Center 8:00am
La Contenta 8:25am

RUN 2:
Govt Center 11:20am
La Contenta 11:45am

RUN 3:
Govt Center 1:05pm
La Contenta 1:30pm

RUN 4:
Govt Center 2:50pm
La Contenta 3:15pm

RUN 5:
Govt Center 4:20pm
La Contenta 4:45pm

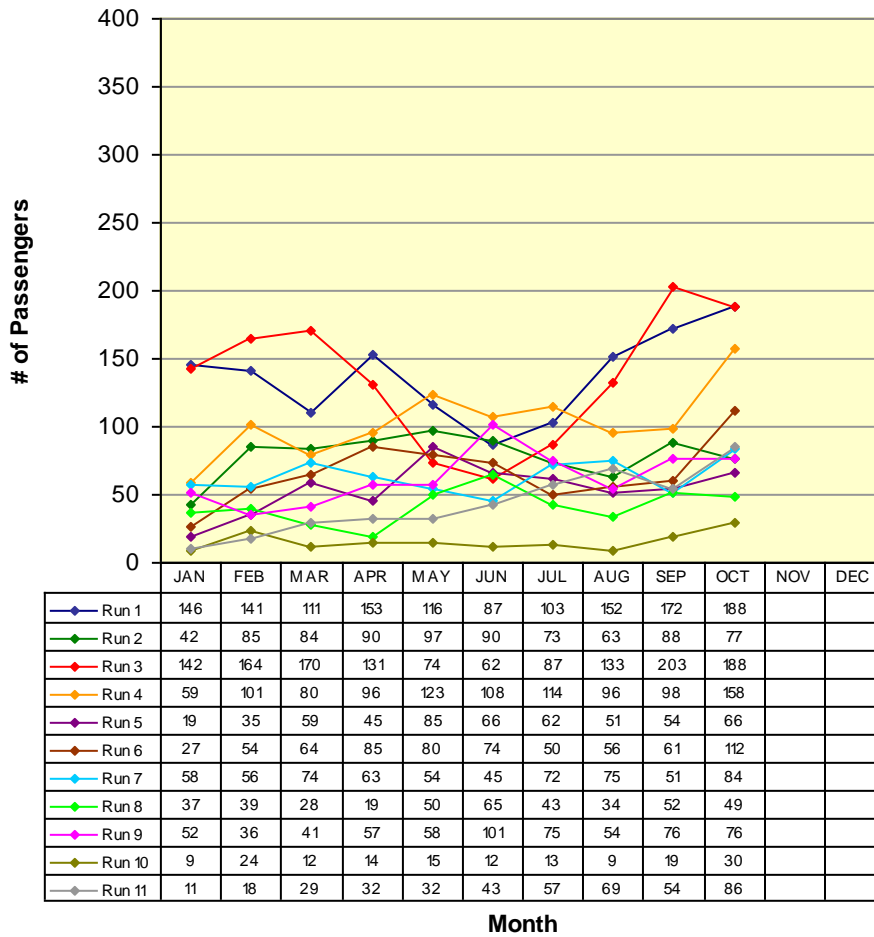
RUN 6:
Govt Center 5:55pm
La Contenta 6:25pm

* Does not include Lodi Service runs

ROUTE 1b

San Andreas / Angels Camp

Route 1b(S) (San Andreas to Angels Camp)

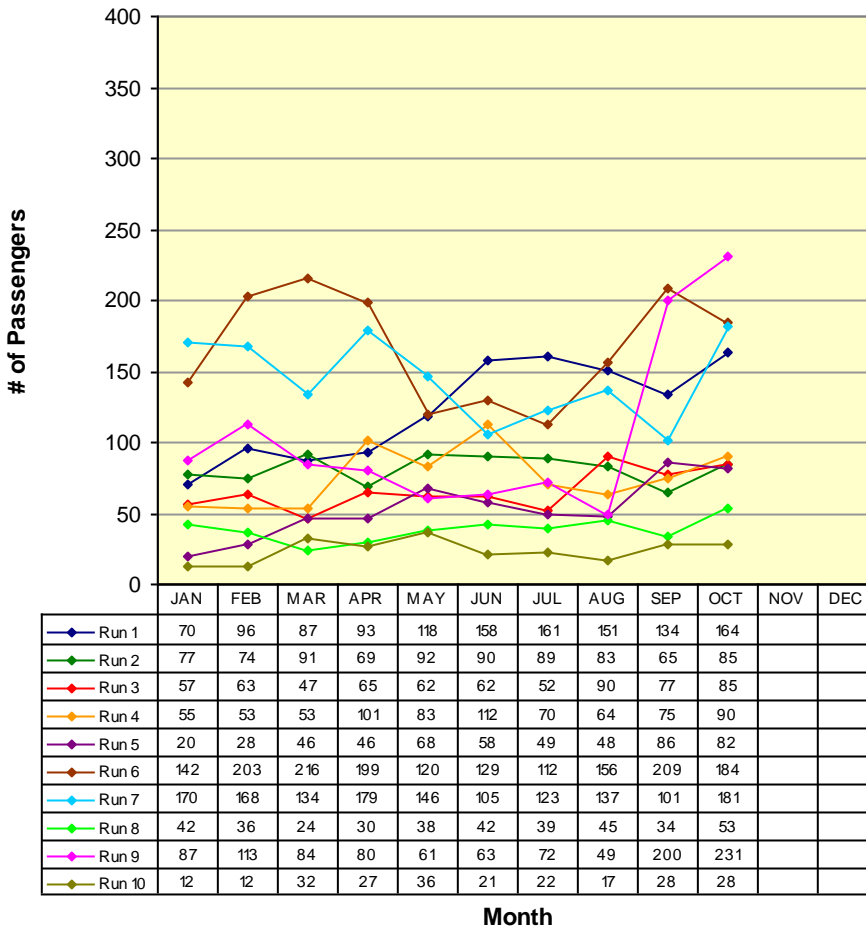


RUN 1:	Govt Center	6:55am
	Save Mart	7:15am
RUN 2:	Govt Center	7:55am
	Save Mart	8:20am
RUN 3:	Govt Center	9:00am
	Save Mart	9:20am
RUN 4:	Govt Center	11:38am
	Save Mart	11:55am
RUN 5:	Govt Center	12:15pm
	Save Mart	12:35pm
RUN 6:	Govt Center	2:00pm
	Save Mart	2:20pm
RUN 7:	Govt Center	2:40pm
	Save Mart	3:00pm
RUN 8:	Govt Center	3:40pm
	Save Mart	4:00pm
RUN 9:	Govt Center	5:10pm
	Save Mart	5:30pm
RUN 10:	Govt Center	6:50pm
	Save Mart	7:10pm
RUN 11:	Govt Center	7:40pm
	Save Mart	8:00pm

ROUTE 1b

San Andreas / Angels Camp

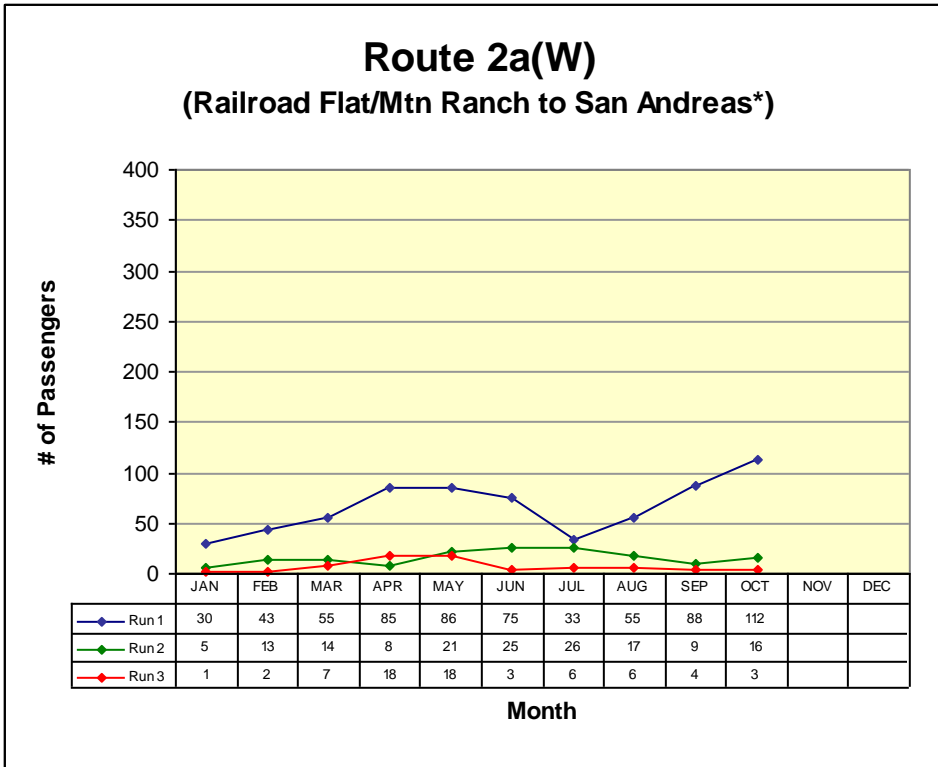
Route 1b(N) (Angels Camp to San Andreas)



RUN 1:	
Save Mart	7:20am
Govt Center	7:55am
RUN 2:	
Save Mart	8:35am
Govt Center	9:00am
RUN 3:	
Save Mart	11:00am
Govt Center	11:20am
RUN 4:	
Save Mart	12:00pm
Govt Center	12:20pm
RUN 5:	
Save Mart	12:45pm
Govt Center	1:05pm
RUN 6:	
Save Mart	2:30pm
Govt Center	2:50pm
RUN 7:	
Save Mart	4:00pm
Govt Center	4:20pm
RUN 8:	
Save Mart	4:50pm
Govt Center	5:10pm
RUN 9:	
Save Mart	5:35pm
Govt Center	5:55pm
RUN 10:	
Save Mart	7:10pm
Govt Center	7:30pm

ROUTE 2a

Railroad Flat / Mountain Ranch / San Andreas

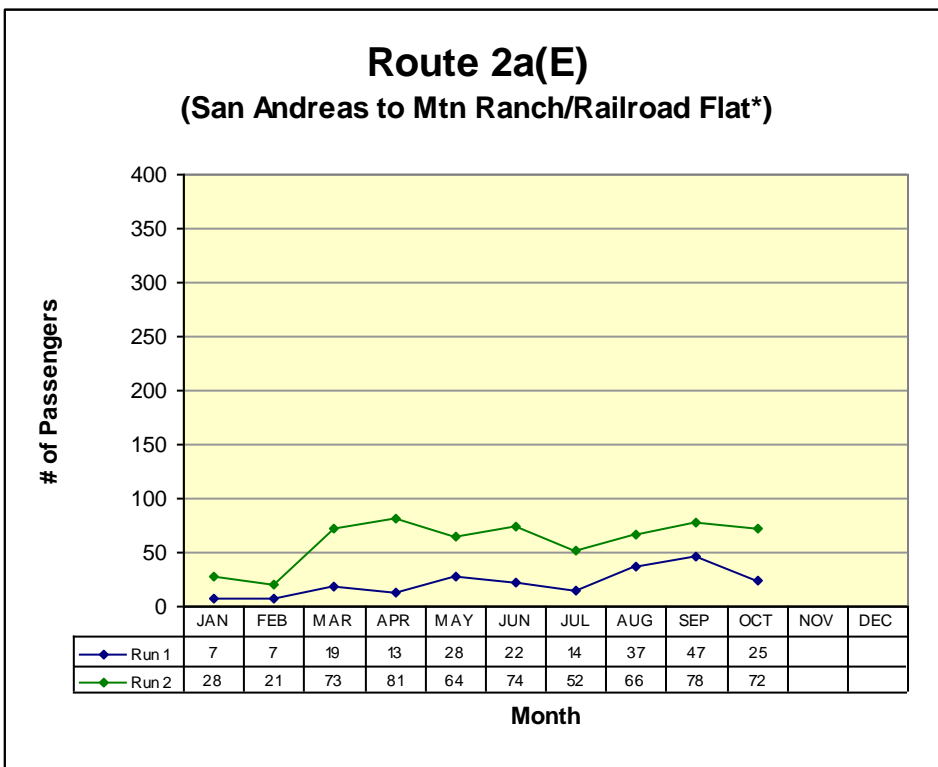


RUN 1:
 Community Center 7:00am
 Govt Center 7:40am

RUN 2:
 Blunder Inn 9:10am
 Govt Center 9:23am

RUN 3:
 Community Center 6:15pm
 Govt Center 6:45pm

**Not all runs begin in same location*



RUN 1:
 Govt Center 8:48am
 Blunder Inn 9:01am

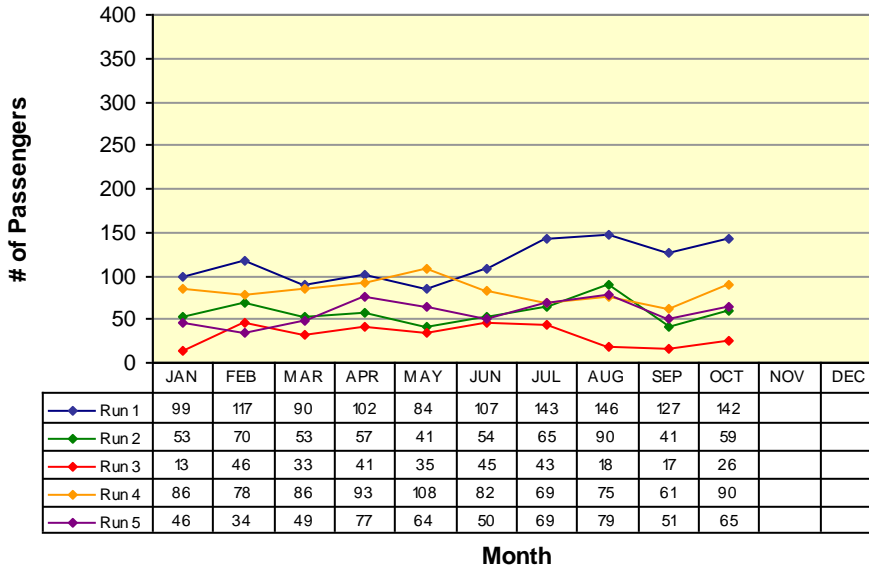
RUN 2:
 Govt Center 5:45pm
 Community Hall 6:30pm

**Not all runs end in same location*

ROUTE 2b

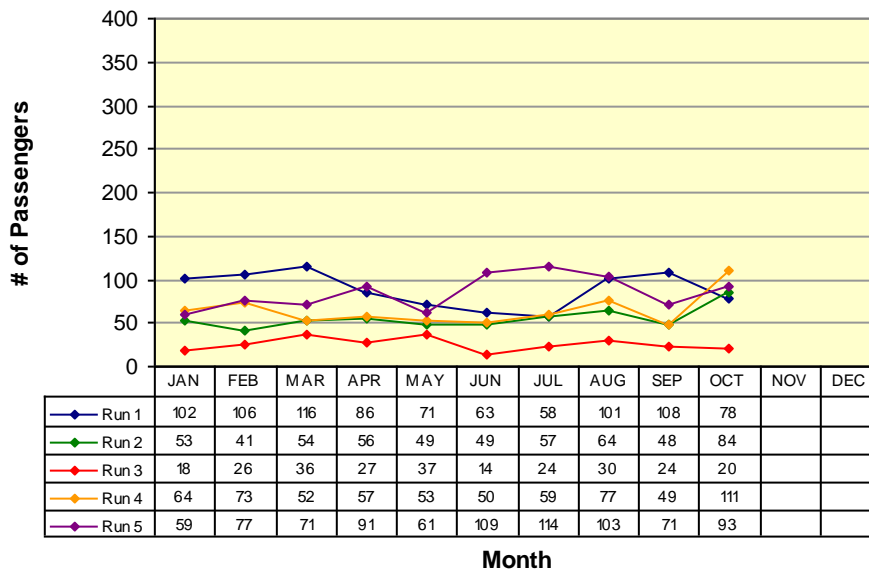
San Andreas / Mokelumne Hill / Jackson

Route 2b(N) (San Andreas to Jackson)



RUN 1:	
Govt Center	7:40am
Raley's	8:13am
RUN 2:	
Govt Center	9:23am
Raley's	9:53am
RUN 3:	
Govt Center	11:00am
Raley's	11:33am
RUN 4:	
Govt Center	1:30pm
Raley's	2:03pm
RUN 5:	
Govt Center	4:10pm
Raley's	4:44pm

Route 2b(S) (Jackson to San Andreas)

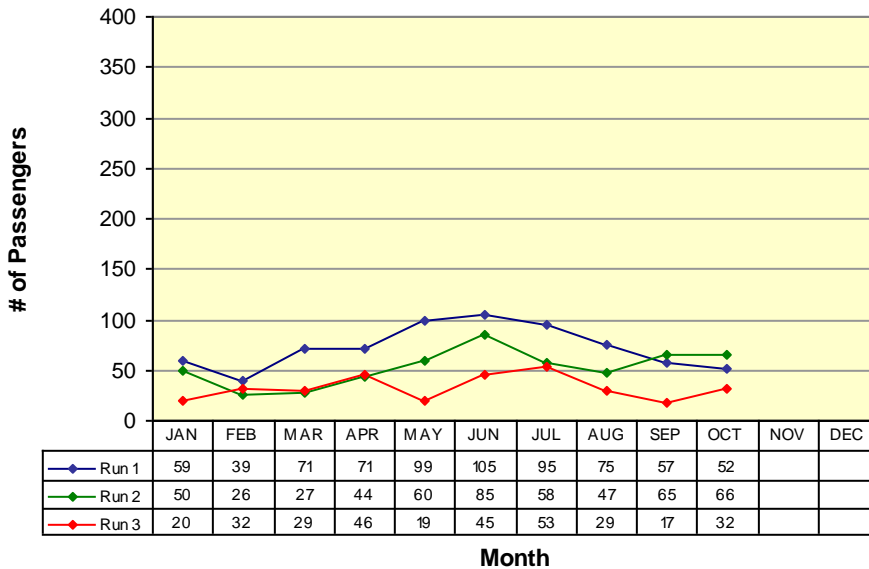


RUN 1:	
Raley's	8:18am
Govt Center	8:48am
RUN 2:	
Raley's	10:23am
Govt Center	10:53am
RUN 3:	
Raley's	11:40am
Govt Center	12:10pm
RUN 4:	
Raley's	2:07pm
Govt Center	2:37pm
RUN 5:	
Raley's	5:07pm
Govt Center	5:45pm

ROUTE 3

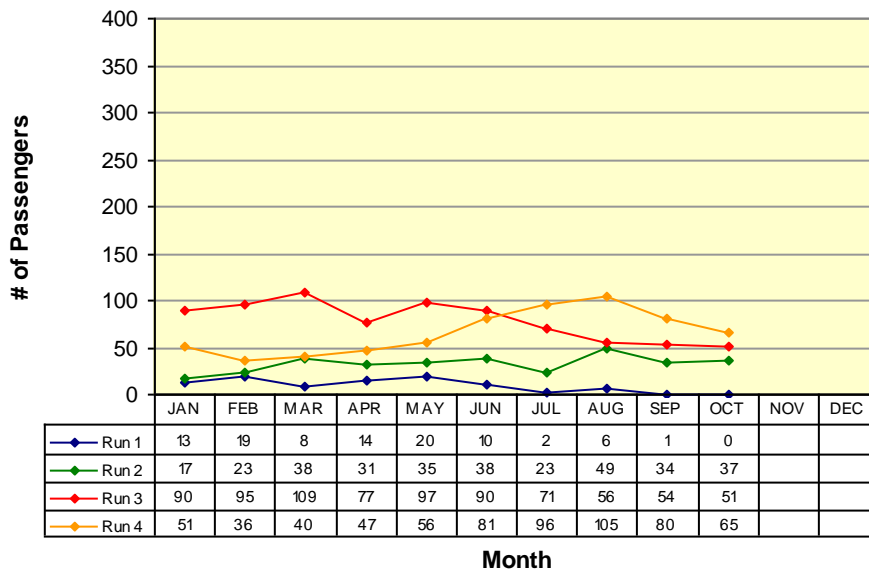
West Point / Glencoe / Mokelumne Hill / San Andreas

Route 3(W) (West Point to San Andreas)



RUN 1:
Community Hall 6:50am
Govt Center 7:40am
RUN 2:
Community Hall 11:00am
Govt Center 11:50am
RUN 3:
Community Hall 4:00pm
Govt Center 4:50pm

Route 3(E) (San Andreas to West Point)

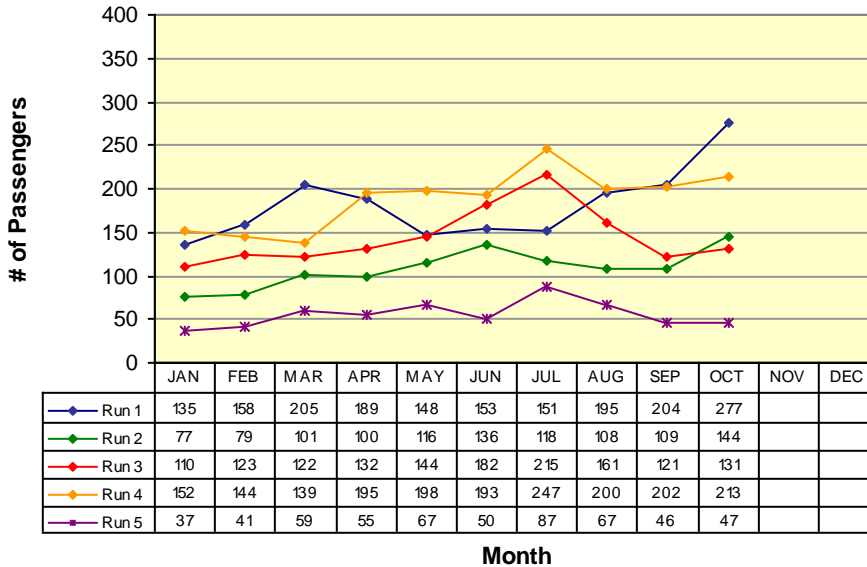


RUN 1:
Moke Hill STP 6:15am
Community Hall 6:50am
RUN 2:
Govt Center 10:00am
Community Hall 10:50am
RUN 3:
Govt Center 3:00pm
Community Hall 3:50pm
RUN 4:
Govt Center 5:20pm
Community Hall 6:10pm

ROUTE 4a

Arnold / Avery / Forest Meadows / Murphys / Angels Camp

Route 4a(W) (Arnold to Angels Camp)



RUN 1:
Post Office 6:15am
Save Mart 7:15am

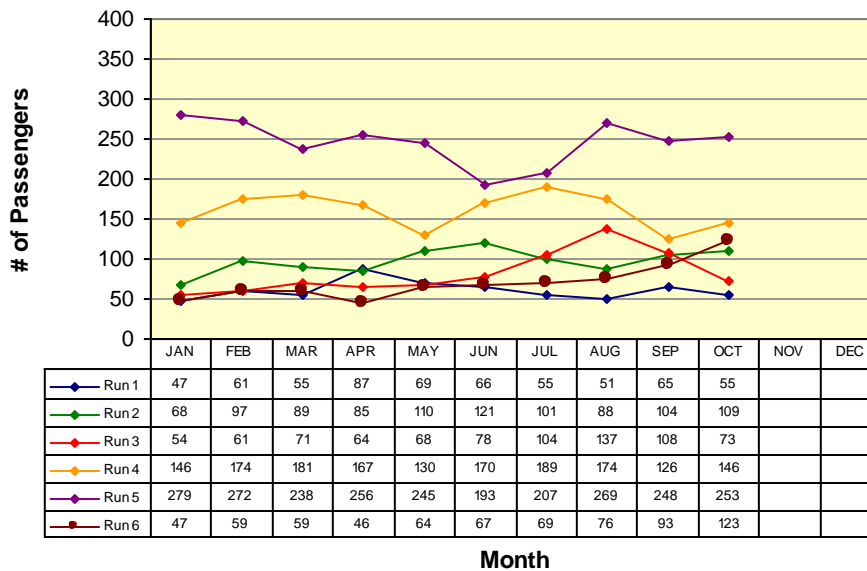
RUN 2:
Post Office 9:30am
Save Mart 10:10am

RUN 3:
Post Office 12:00pm
Save Mart 12:45pm

RUN 4:
Post Office 3:00pm
Save Mart 4:00pm

RUN 5:
Post Office 6:25pm
Save Mart 7:04pm

Route 4a(E) (Angels Camp to Arnold)



RUN 1:
Save Mart 5:44am
Post Office 6:15am

RUN 2:
Save Mart 8:35am
Post Office 9:15am

RUN 3:
Save Mart 11:00am
Post Office 11:40am

RUN 4:
Save Mart 2:20pm
Post Office 3:00pm

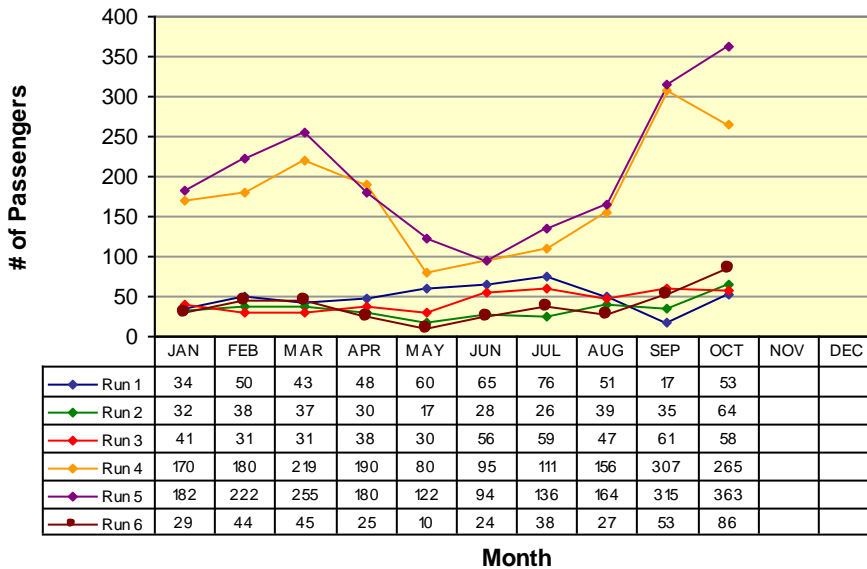
RUN 5:
Save Mart 5:35pm
Post Office 6:15pm

RUN 6:
Save Mart 9:47pm
Post Office 10:27pm

Route 4b

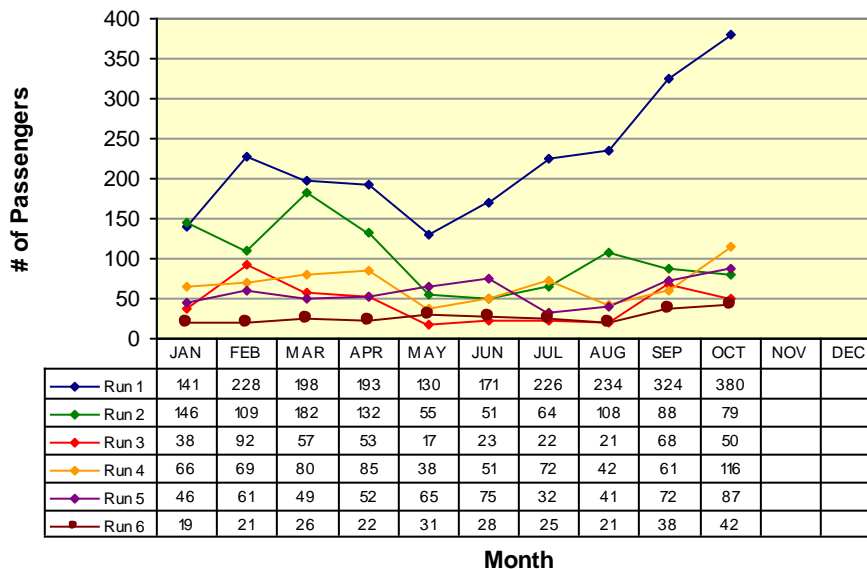
Angels Camp / Calaveras Center / Columbia College

Route 4b(N) (Columbia College to Angels Camp)



RUN 1:	
Oak Pavilion	7:58am
Save Mart	8:35am
RUN 2:	
Oak Pavilion	10:18am
Save Mart	11:00am
RUN 3:	
Oak Pavilion	11:08am
Save Mart	12:00pm
RUN 4:	
Oak Pavilion	1:40pm
Save Mart	2:20pm
RUN 5:	
Oak Pavilion	5:00pm
Save Mart	5:35pm
RUN 6:	
Oak Pavilion	9:10pm
Save Mart	9:47pm

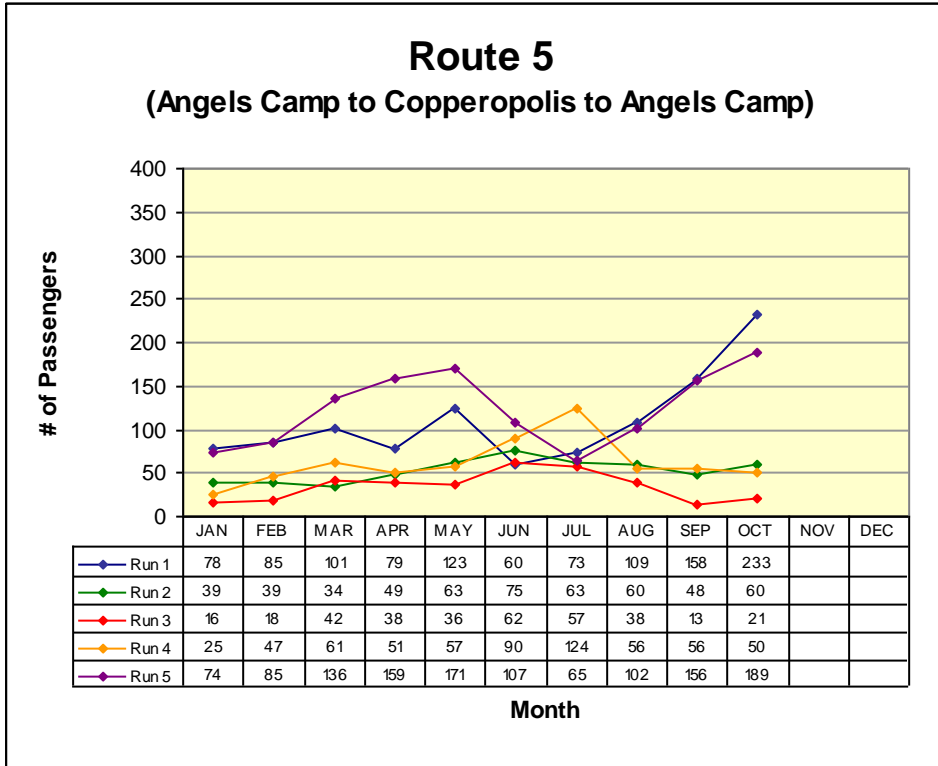
Route 4b(S) (Angels Camp to Columbia College)



RUN 1:	
Save Mart	7:15am
Oak Pavilion	7:50am
RUN 2:	
Save Mart	9:30am
Oak Pavilion	10:10am
RUN 3:	
Save Mart	10:10am
Oak Pavilion	10:52am
RUN 4:	
Save Mart	12:45pm
Oak Pavilion	1:30pm
RUN 5:	
Save Mart	4:00pm
Oak Pavilion	4:42pm
RUN 6:	
Save Mart	8:20pm
Oak Pavilion	9:02pm

Route 5

Angels Camp / Copperopolis / Angels Camp

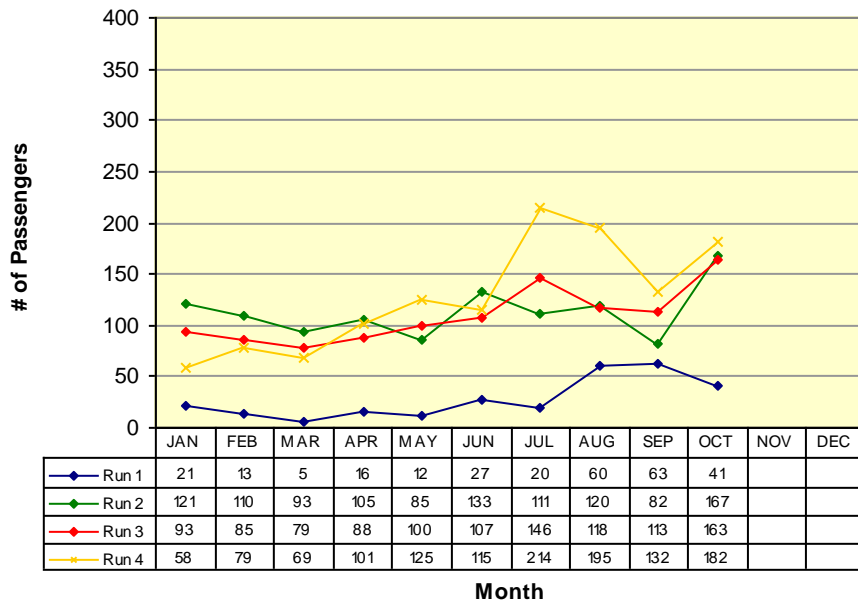


RUN 1:	
Save Mart	6:15am
Save Mart	7:15am
RUN 2:	
Save Mart	11:00am
Save Mart	12:00pm
RUN 3:	
Save Mart	12:00pm
Save Mart	1:00pm
RUN 4:	
Save Mart	3:00pm
Save Mart	4:00pm
RUN 5:	
Save Mart	5:35pm
Save Mart	6:35pm

Route 6

San Andreas / Valley Springs / Wallace / Clements / Lockeford / Victor / Lodi

San Andreas to Lodi (W)



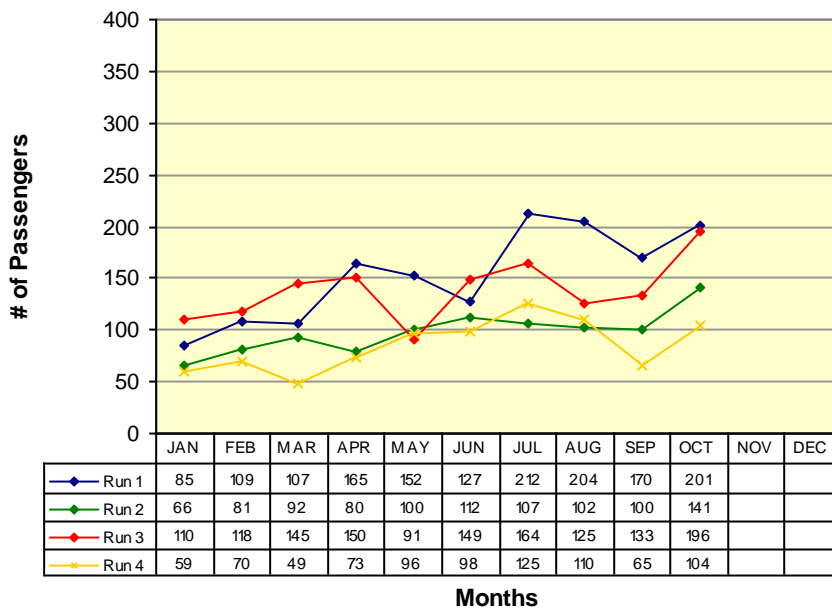
RUN 1:
Govt Center 5:50am
Lodi Station 6:45am

RUN 2:
Govt Center 9:05am
Lodi Station 10:15am

RUN 3:
Govt Center 12:20pm
Lodi Station 1:15pm

RUN 4:
Govt Center 5:10pm
Lodi Station 6:15pm

Lodi to San Andreas (E)



RUN 1:
Lodi Station 6:50am
Govt Center 7:55am

RUN 2:
Lodi Station 10:30am
Govt Center 11:38am

RUN 3:
Lodi Station 1:30pm
Govt Center 2:40pm

RUN 4:
Lodi Station 6:30pm
Govt Center 7:40pm

VI. Vehicles Report

<i>Vehicle #</i>	<i>End Miles</i>	<i>Miles this Month</i>	<i>Miles YTD</i>	<i>Fuel Mileage</i>	<i>Breakdown Frequency</i>	<i>Repair Costs</i>	<i>Major Components Repaired / Replaced</i>
Bus 442	242701	4536	18316	10.1	11287		
Bus 54	313053	4697	16930	10.3	9018		
Bus 55	296103	5008	18221	9.1	5213		
Bus 56	196596	1609	6823	8.5	1609	\$12,994.96	Engine replacement
Bus 57	239189	1827	13499	10.9	0	\$529.36	EGR Valve, EGR Cooler, gaskets
Bus 58	12152	6124	9456	10.1	14884		
Bus 59	27020	6009	24022	10.0	29322		
Bus 60	27048	6661	23523	10.6	29045		
Bus 61	22908	5607	18807	9.0	23872		
Bus 62	24665	6283	20341	9.8	26594		

VII. Service Disruption Summary

DATE	SCHED. TIME	ROUTE	BUS #	LOCATION	REASON	MINUTES DELAYED
10/1/08	1:30 PM	6	61	Lodi	Mobility Device	40
10/1/08	2:40 PM	6	61	Govt Center	Catching up from mobility device	38
10/1/08	7:55 AM	1	61	Govt Center	Waiting for transfers	17
10/1/08	4:45 PM	1	55	Vista Del Lago	Deviations	21
10/2/08	5:45 PM	2	54	Govt Center	Waiting for transfers	23
10/2/08	4:00 PM	1	55	Save Mart	Deviations	20
10/2/08	4:20 PM	1	55	Govt Center	Catching up from deviations	21
10/2/08	4:45 PM	1	55	Vista Del Lago	Catching up from deviations	35
10/2/08	5:10 PM	1	55	Govt Center	Catching up from deviations	20
10/3/08	5:45 PM	2	54	Govt Center	Waiting for transfers	21
10/3/08	4:20 PM	1	55	Govt Center	Deviations	20
10/6/08	5:45 AM	2	442	Govt Center	Waiting for transfers	20
10/7/08	6:25 PM	4	62	Arnold	Flagdowns & deviations	18
10/7/08	12:00 PM	5	58	Save Mart	Deviations	20

VII. Service Disruption Summary

DATE	SCHED. TIME	ROUTE	BUS #	LOCATION	REASON	MINUTES DELAYED
10/7/08	13:00	5	58	Save Mart	Catching up from deviations	23
10/7/08	17:45	2	54	Govt Center	Waiting for transfers	23
10/8/08	13:35	1	62	Vista Del Lago	Deviations	17
10/10/08	17:45	2	60	Govt Center	Waiting for transfers	18
10/13/08	18:25	4	58	Arnold	Flagdowns & deviations	16
10/13/08	19:04	4	58	Save Mart	Catching up from deviations	19
10/13/08	6:15	3	54	Moke Hill	New driver on route	30
10/13/08	6:50	3	54	West Point	New driver on route	25
10/13/08	7:40	3	54	Govt Center	New driver on route	30
10/13/08	17:45	2	442	Govt Center	Waiting for transfers	20
10/14/08	11:38	1	58	Govt Center	Catching up from mobility device	27
10/14/08	12:00	1	58	Save Mart	Catching up from mobility device	25
10/14/08	12:20	6	58	Govt Center	Catching up from mobility device	25
10/14/08	13:30	6	58	Lodi	Catching up from mobility device	17

DATE	SCHED. TIME	ROUTE	BUS #	LOCATION	REASON	MINUTES DELAYED
10/14	17:45	2	59	Govt Center	Waiting for transfers	25
10/14	15:00	4	442	Arnold	Flagdowns & deviations	19
10/15	17:45	2	58	Govt Center	Waiting for transfers	19
10/16	12:00	1	62	Save Mart	Catching up from mobility device	27
10/16	12:20	6	62	Govt Center	Catching up from mobility device	30
10/16	13:30	6	62	Lodi	Catching up from mobility device	29
10/16	14:40	6	62	Govt Center	Catching up from mobility device	23
10/17	11:38	1	58	Govt Center	Catching up from mobility device	34
10/17	12:00	1	58	Save Mart	Catching up from mobility device	35
10/17	12:20	6	58	Govt Center	Catching up from mobility device	50
10/17	13:30	6	58	Lodi	Catching up from mobility device	60
10/17	14:40	6	58	Govt Center	Catching up from mobility device	35
10/17	17:45	2	62	Govt Center	Waiting for transfers	18
10/17	15:00	4	55	Arnold	Flagdowns & deviations	17

VII. Service Disruption Summary

DATE	SCHED. TIME	ROUTE	BUS #	LOCATION	REASON	MINUTES DELAYED
10/17	16:00	4	55	Save Mart	Catching up from deviations	27
10/20	15:00	4	55	Arnold	Flagdowns & deviations	19
10/22	10:00	3	-	Govt Center	Route cancellation	-
10/22	11:00	3	-	West Point	Route cancellation	-
10/23	10:00	3	-	Govt Center	Route cancellation	-
10/23	11:00	3	-	West Point	Route cancellation	-
10/23	11:38	1	61	Govt Center	Bus trade out	32
10/23	12:00	1	61	Save Mart	Catching up from bus trade	30
10/23	12:20	6	61	Govt Center	Catching up from bus trade	30
10/23	13:30	6	61	Lodi	Catching up from bus trade	36
10/23	14:40	6	61	Govt Center	Catching up from bus trade	33
10/23	6:50	6	61	Lodi	New driver on route got lost	59
10/23	7:55	6	61	Govt Center	Catching up from getting lost	50
10/23	15:00	4	442	Arnold	Flagdowns & deviations	18

VII. Service Disruption Summary

DATE	SCHED. TIME	ROUTE	BUS #	LOCATION	REASON	MINUTES DELAYED
10/23/08	4:20 PM	1	55	Govt Center	Deviations	16
10/27/08	8:18 AM	2	55	Jackson	Mobility Device	17
10/27/08	8:48 AM	2	55	Govt Center	Catching up from mobility device	20
10/27/08	9:23 AM	2	55	Govt Center	Catching up from mobility device	16
10/27/08	3:00 PM	4	56	Arnold	Flagdowns & deviations	20
10/28/08	3:00 PM	4	58	Arnold	Flagdowns & deviations	17
10/30/08	6:15 AM	4	61	Arnold	Flagdowns & deviations	21
10/30/08	5:45 PM	2	62	Govt Center	Waiting for transfers	24

VIII. Fleet Maintenance Report

Identified Concern	Bus	Date Filed	Action Taken	Date Reconsiled	Completed By
Cracked convex mirror	55	8-Oct	Mirror replaced	29-Oct	RB
Loud knock coming from engine	56	23-Sep	Replaced engine	23-Oct	Performance Chevrolet
Bus not running well, losing power	57	9-Oct	replaced EGR valve, EGR Cooler, and gaskets	17-Oct	RB
					RB
					RB
					RB
					RB
					RB
					RB

IX. Wheelchair Lift Use

For the month of: September 2008

Date	Vehicle #	Pick up Point	Drop off Point	Pick-up time	Drop-off time	Uses
10/1	57	Lodi	Senior Center	1029	1145	2
10/1	61	Senior Center	Wallace	1235	1331	2
10/9	59	Dr. Oliver	Bear Mt. Apts. #4	1610	1644	2
10/14	58	Lodi	Wallace	1030	1122	2
10/16	62	Lodi	Wallace	1030	1116	2
10/17	58	Lodi	Senior Center	1030	1209	2
10/17	58	Senior Center	Wallace	1258	1352	2
10/21	58	Lodi	Wallace	1030	1127	2
10/22	61	Bear Mt. Apt.	Treats	1357	1420	2
10/27	61	Lodi	San Andreas	658	816	2
10/27	62	San Andreas	Columbia	816	1018	2
10/27	55	Raleys	San Andreas	824	905	2
10/27	61	Lodi	San Andreas	1030	1146	2
10/27	56	Columbia	Save Mart	1336	1425	2
10/28	59	Lodi	Wallace	1032	1122	2