



Monthly Operations Report



MV Transportation, Inc.

I. Project Manager's Summary

From: Annie Self, Calaveras Transit General Manager
MV Transportation, Inc.
750 Industrial Way - P. O. Box 1385
San Andreas, Ca 95249
Phone (209) 754-4450
Fax (209) 754-9086

To: Calaveras County
C/o Jamie Azarvand
Transit Manager, Public Works
891 Mountain Ranch Road
San Andreas, CA 95249

On time performance checks:

On time performance was checked throughout the month of August. On time percentage for service in August was 95%.

Trends:

When comparing Fixed Route ridership in July and August, we found there were 331 more passenger trips in August than in July.

Route 1 had 2,061 passenger trips in July and 2,344 passenger trips in August. There was an increase of 283 passenger trips on Route 1 in August.

Route 2 had 832 passenger trips in July and 964 passenger trips in August. There was an increase of 132 passenger trips on Route 2 in August.

Route 3 had 398 passenger trips in July and 367 passenger trips in August. There was a decrease of 31 passenger trips on Route 3 in August.

Route 4 had 2,430 passenger trips in July and 2,477 passenger trips in August. There was an increase of 47 passenger trips on Route 4 in August.

Route 5 (Copperopolis) had 382 passenger trips in July and 365 passenger trips in July. There was a decrease of 17 passenger trips on Route 5 in August.

Route 6 (Lodi) had 1,099 passenger trips in July and 1,034 passenger trips in August. There was a decrease of 65 passenger trips on Route 6 in August.

The Bear Valley Music Festival Shuttle had 40 passenger trips in the month of August.

Route Cancellations:

8/7 11:38 Route 1 bus from San Andreas to Angels Camp

Comments/Compliments/Complaints:

There were no comments, compliments, or complaints received in August.

Safety and Training:

The Safety Meetings for the month of August were held on Wednesday August 13 2008. The main focus of these meetings was Incident investigation and reporting

There was 1 preventable incident that occurred in the month of August.

On August 12 an MV operator was backing into a parking space in the yard, and caught the front bumper of bus 62. When they attempted to pull forward to correct, they pulled the bumper out. The damage was repaired within 1 day, and bus 62 was returned to service. The operator received appropriate discipline and was required to attend 2 hours of retraining before they were able to return to full duty.

Overview:

We continue to see a record setting number of passenger trips. During August we concluded our annual shuttle service for the Bear Valley Music Festival.

Road construction projects throughout the county did have some negative effects on our on time performance. Most of these projects have been completed, and we anticipate our on time performance will increase.

II. Billing Summary

P.O. Box 39000, Dept. 33135
 San Francisco, CA 94139-3135

INVOICE

Customer

Number: 5901 Name: County of Calaveras
 Address: 891 Mountain Ranch Rd.
 City: San Andreas State: CA ZIP: 95249
 Contact: Jamie Azarvand Transit and Transportation Planner

9/2/2008
 Terms: NET 30
 Due Date: 10/3/2008

| Qty | Description | Account code | Unit Price | TOTAL |
|--------------|---|--------------|-------------|--------------------|
| 1 | Fixed Fee August 2008 | 4080 | \$21,354.25 | \$21,354.25 |
| 1209.33 | Variable August 2008 | 4080 | \$39.41 | \$47,659.70 |
| Subtotal | | | | |
| 5.45 | Bear Valley Music Festival | 4080 | \$39.41 | \$214.78 |
| 4.20 | Bear Valley Music Festival Weekend | 4080 | \$50.44 | \$211.85 |
| Subtotal | | | | \$69,440.58 |
| 1218.98 | Hours Sub Total | | | |
| SubTotal | | | | \$69,440.57 |
| TOTAL | | | | \$69,440.57 |



III. Deposit Summary

Current Month Deposit Summary

| Date | Collection Period | Tickets | DAR | Fixed Rt | Special | Total |
|------|-------------------|------------|--------|------------|---------|------------|
| 8/4 | 8/1 | \$1,530.00 | | \$388.50 | | \$1,918.50 |
| 8/5 | 8/4 | \$154.00 | | \$208.50 | | \$362.50 |
| 8/8 | 8/5 - 8/7 | \$1,058.00 | | \$616.50 | | \$1,674.50 |
| 8/12 | 8/8, 8/10 - 8/11 | \$57.75 | | \$475.50 | | \$533.25 |
| 8/15 | 8/12 - 8/14 | \$305.00 | | \$589.50 | | \$894.50 |
| 8/18 | 8/15 | \$34.00 | | \$158.50 | | \$192.50 |
| 8/19 | 8/18 | \$50.00 | | \$203.00 | | \$253.00 |
| 8/22 | 8/19 - 8/21 | \$42.00 | | \$555.00 | | \$597.00 |
| 8/25 | 8/22 | \$27.50 | | \$196.50 | | \$224.00 |
| 8/26 | 8/25 | \$60.00 | | \$206.50 | | \$266.50 |
| 8/27 | 8/26 | \$20.00 | | \$202.00 | | \$222.00 |
| 8/29 | 8/27 - 8/28 | \$208.00 | | \$384.00 | | \$592.00 |
| 9/2 | 8/29 | \$70.00 | | \$183.00 | | \$253.00 |
| | | | | | | \$0.00 |
| | | | | | | \$0.00 |
| | | | | | | \$0.00 |
| | | \$3,616.25 | \$0.00 | \$4,367.00 | \$0.00 | \$7,983.25 |

Notes:

September 2nd deposit for August vault count

Matches county deposit records?



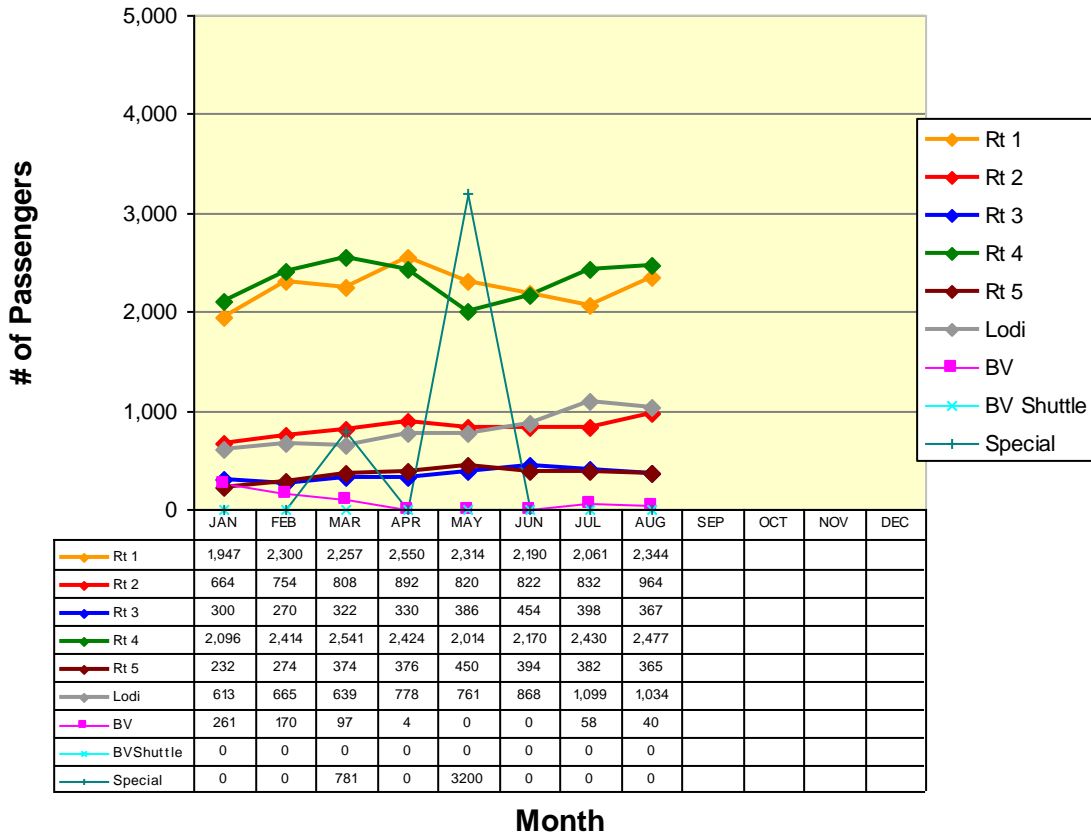
IV. Current Month Operational Statistics

| | Fixed Rt. | Lodi | Special | Bear Valley | BV Shuttle | Total |
|-----------------------|-----------|--------|---------|-------------|------------|----------|
| Ridership | 6517 | 1034 | 0 | 40 | 0 | 7,591 |
| Vehicle Hours | 1329.45 | 209.78 | 0.00 | 10.47 | 0.00 | 1,549.70 |
| Vehicle Service Hours | 1021.65 | 187.68 | 0.00 | 9.65 | 0.00 | 1,218.98 |
| Operating Days | 21 | 21 | 0 | 2 | 0 | 22 |
| Vehicle Service Miles | 29,930 | 6,411 | 0 | 226 | 0 | 36,567 |

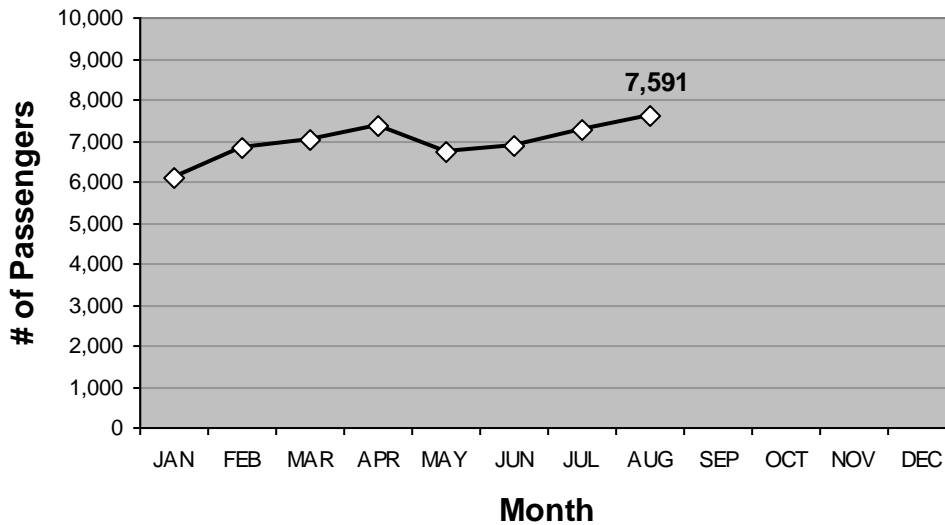
| | Rt 1 | Rt 2 | Rt 3 | Rt 4 | Rt 5 | Rt 6 | All |
|-------------------|-------|------|------|-------|------|-------|-------|
| Cash Regular | 280 | 100 | 87 | 393 | 58 | 233 | 1,151 |
| Cash Discount | 533 | 205 | 114 | 1,039 | 180 | 233 | 2,304 |
| Pass Regular | 85 | 41 | 32 | 53 | 3 | 58 | 272 |
| Pass Discount | 239 | 166 | 10 | 165 | 27 | 116 | 723 |
| Ticket Regular | 187 | 106 | 48 | 90 | 24 | 104 | 559 |
| Ticket Discount | 215 | 135 | 6 | 239 | 38 | 137 | 770 |
| Transfer | 657 | 163 | 28 | 377 | 24 | 91 | 1,340 |
| Promo | 0 | 0 | 0 | 0 | 0 | 0 | 0 |
| Free | 88 | 26 | 24 | 62 | 11 | 32 | 243 |
| Day Pass | 60 | 22 | 18 | 59 | 0 | 30 | 189 |
| Total Passenger # | 2,344 | 964 | 367 | 2,477 | 365 | 1,034 | 7,551 |

V. Ridership Trends

Calaveras Transit Ridership



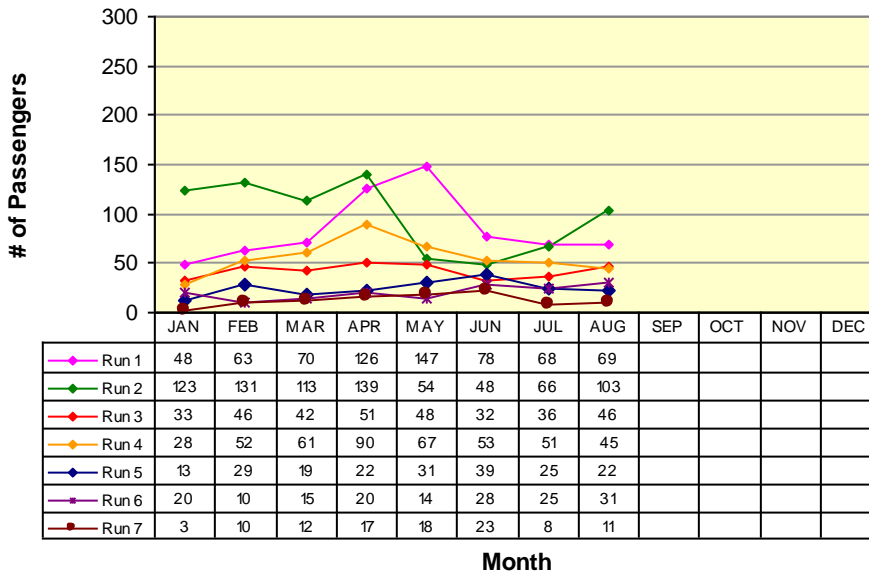
Fixed Route Ridership



ROUTE 1a

Rancho Calaveras / Valley Springs / San Andreas

Route 1a(E) (La Contenta to San Andreas*)



RUN 1:
La Contenta 6:30am
Govt Center 6:55am

RUN 2:
Valley Oak Center 8:35am
Govt Center 9:00am

RUN 3:
La Contenta 11:45am
Govt Center 12:20pm

RUN 4:
La Contenta 1:35pm
Govt Center 2:00pm

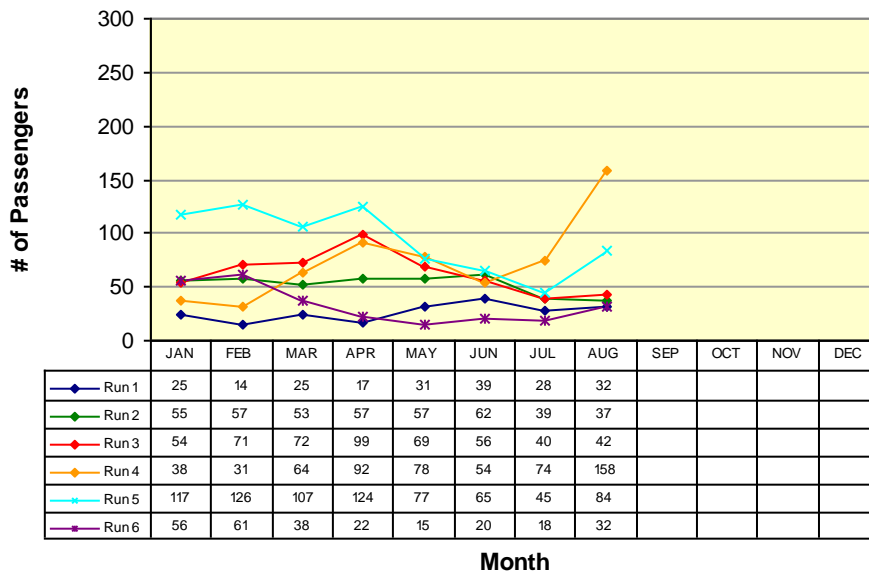
RUN 5:
La Contenta 3:15pm
Govt Center 3:40pm

RUN 6:
La Contenta 4:45pm
Govt Center 5:10pm

RUN 7:
La Contenta 6:25pm
Govt Center 6:50pm

*Does not include Lodi Service runs

Route 1a(W) (Government Center to La Contenta*)



RUN 1:
Govt Center 8:00am
La Contenta 8:25am

RUN 2:
Govt Center 11:20am
La Contenta 11:45am

RUN 3:
Govt Center 1:05pm
La Contenta 1:30pm

RUN 4:
Govt Center 2:50pm
La Contenta 3:15pm

RUN 5:
Govt Center 4:20pm
La Contenta 4:45pm

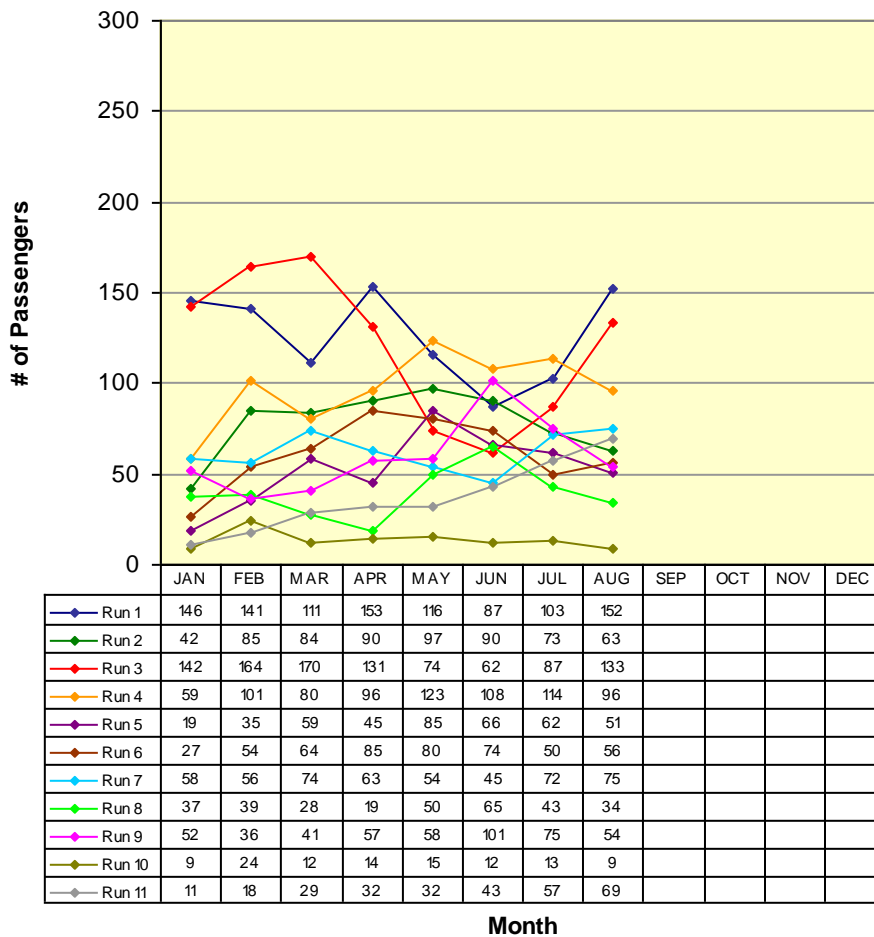
RUN 6:
Govt Center 5:55pm
La Contenta 6:25pm

* Does not include Lodi Service runs

ROUTE 1b

San Andreas / Angels Camp

Route 1b(S) (San Andreas to Angels Camp)

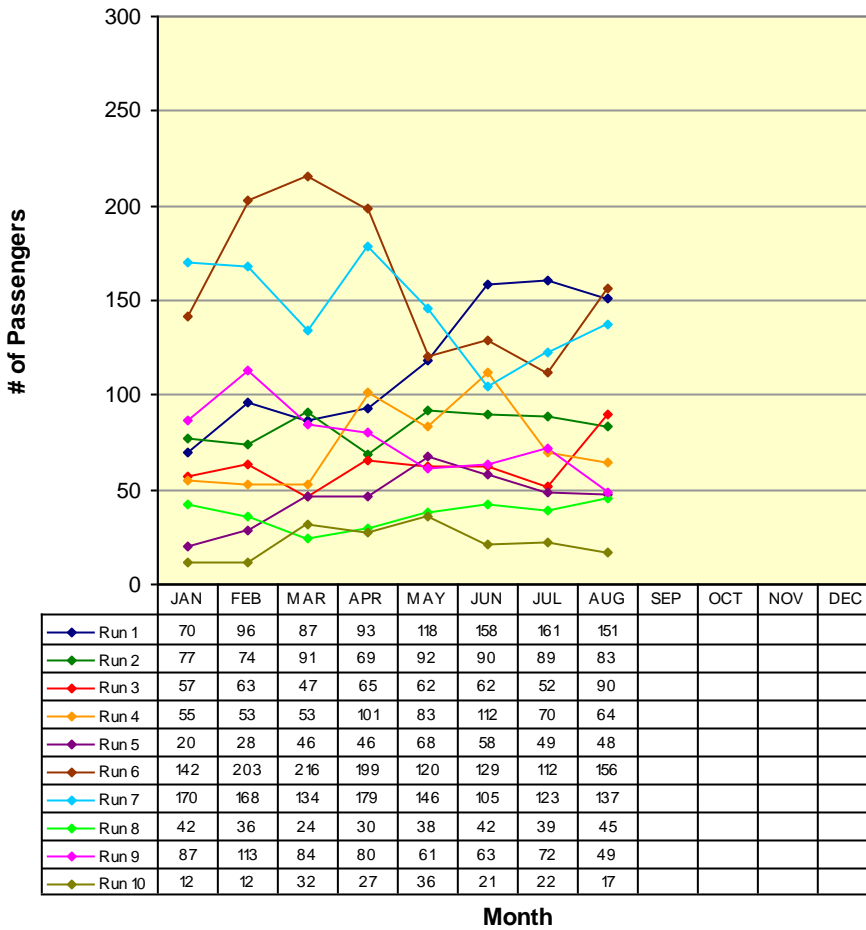


| | | |
|----------------|-------------|---------|
| RUN 1: | Govt Center | 6:55am |
| | Save Mart | 7:15am |
| RUN 2: | Govt Center | 7:55am |
| | Save Mart | 8:20am |
| RUN 3: | Govt Center | 9:00am |
| | Save Mart | 9:20am |
| RUN 4: | Govt Center | 11:38am |
| | Save Mart | 11:55am |
| RUN 5: | Govt Center | 12:15pm |
| | Save Mart | 12:35pm |
| RUN 6: | Govt Center | 2:00pm |
| | Save Mart | 2:20pm |
| RUN 7: | Govt Center | 2:40pm |
| | Save Mart | 3:00pm |
| RUN 8: | Govt Center | 3:40pm |
| | Save Mart | 4:00pm |
| RUN 9: | Govt Center | 5:10pm |
| | Save Mart | 5:30pm |
| RUN 10: | Govt Center | 6:50pm |
| | Save Mart | 7:10pm |
| RUN 11: | Govt Center | 7:40pm |
| | Save Mart | 8:00pm |

ROUTE 1b

San Andreas / Angels Camp

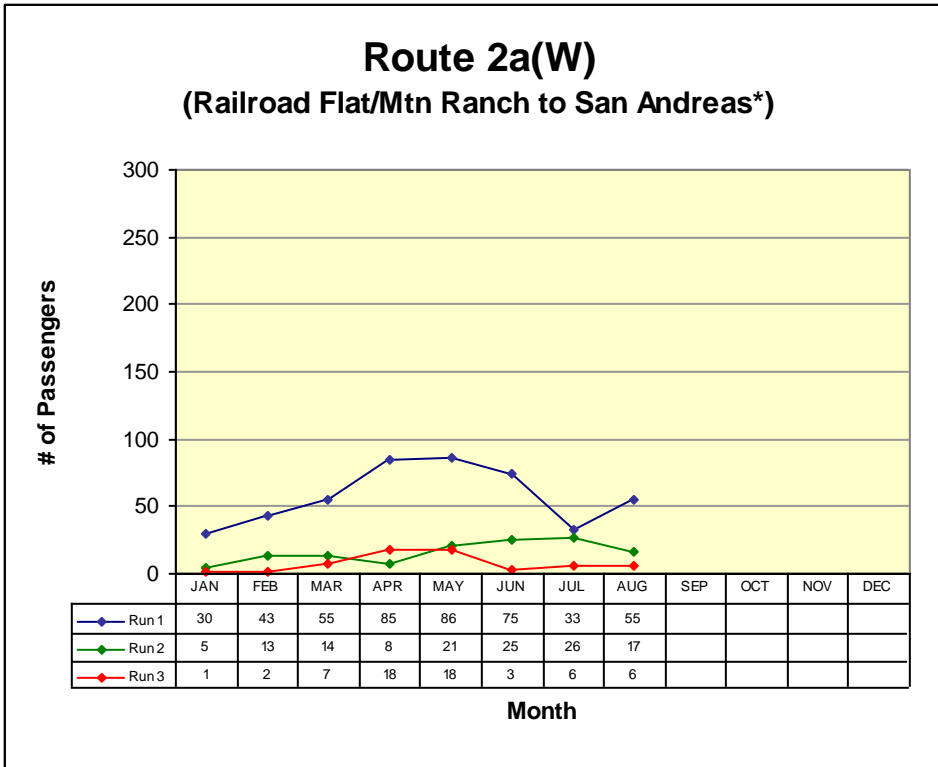
Route 1b(N) (Angels Camp to San Andreas)



| | |
|----------------|---------|
| RUN 1: | |
| Save Mart | 7:20am |
| Govt Center | 7:55am |
| RUN 2: | |
| Save Mart | 8:35am |
| Govt Center | 9:00am |
| RUN 3: | |
| Save Mart | 11:00am |
| Govt Center | 11:20am |
| RUN 4: | |
| Save Mart | 12:00pm |
| Govt Center | 12:20pm |
| RUN 5: | |
| Save Mart | 12:45pm |
| Govt Center | 1:05pm |
| RUN 6: | |
| Save Mart | 2:30pm |
| Govt Center | 2:50pm |
| RUN 7: | |
| Save Mart | 4:00pm |
| Govt Center | 4:20pm |
| RUN 8: | |
| Save Mart | 4:50pm |
| Govt Center | 5:10pm |
| RUN 9: | |
| Save Mart | 5:35pm |
| Govt Center | 5:55pm |
| RUN 10: | |
| Save Mart | 7:10pm |
| Govt Center | 7:30pm |

ROUTE 2a

Railroad Flat / Mountain Ranch / San Andreas

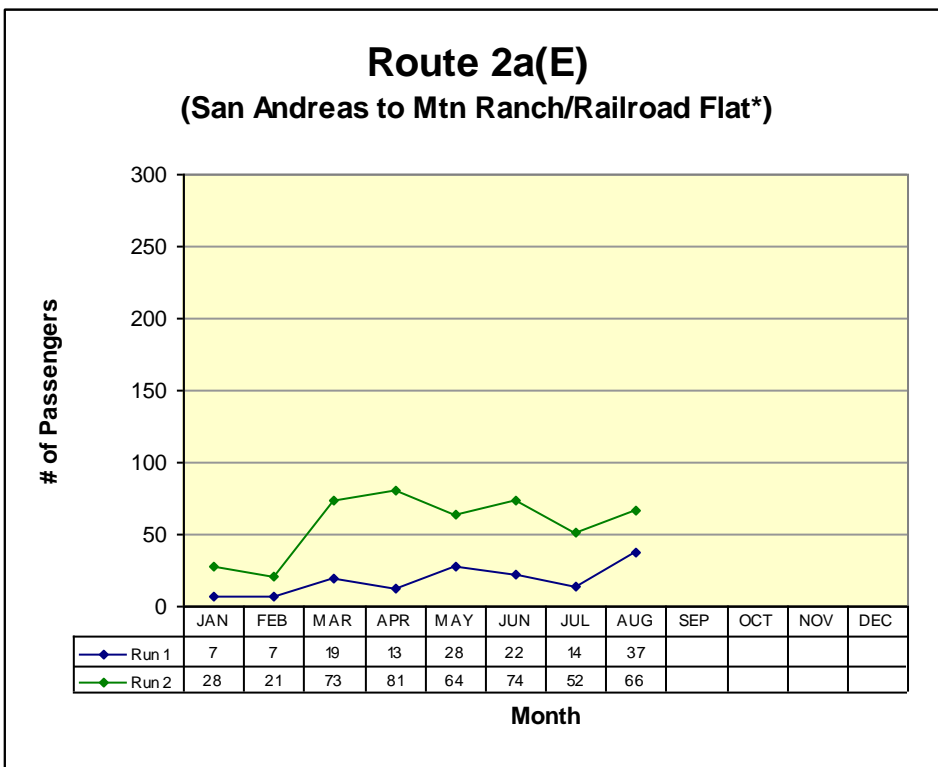


RUN 1:
 Community Center 7:00am
 Govt Center 7:40am

RUN 2:
 Blunder Inn 9:10am
 Govt Center 9:23am

RUN 3:
 Community Center 6:15pm
 Govt Center 6:45pm

**Not all runs begin in same location*



RUN 1:
 Govt Center 8:48am
 Blunder Inn 9:01am

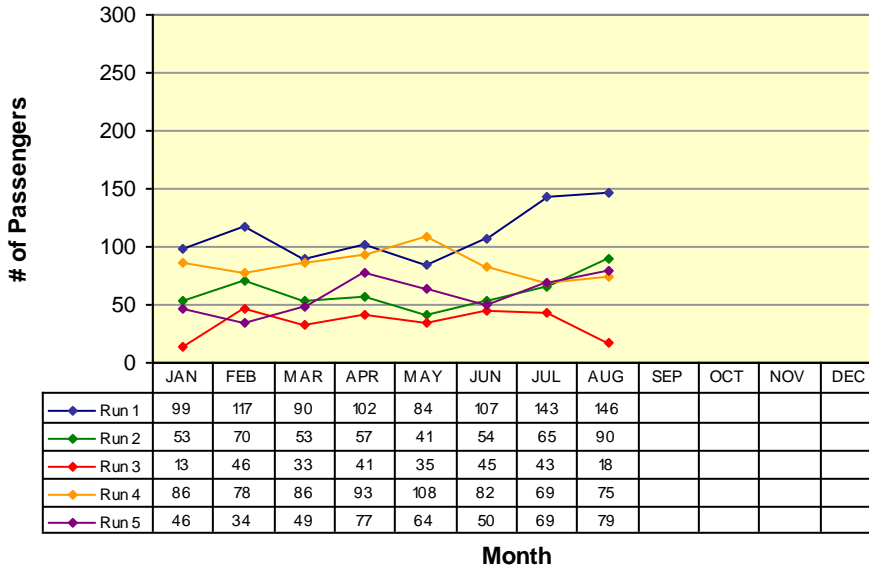
RUN 2:
 Govt Center 5:45pm
 Community Hall 6:30pm

**Not all runs end in same location*

ROUTE 2b

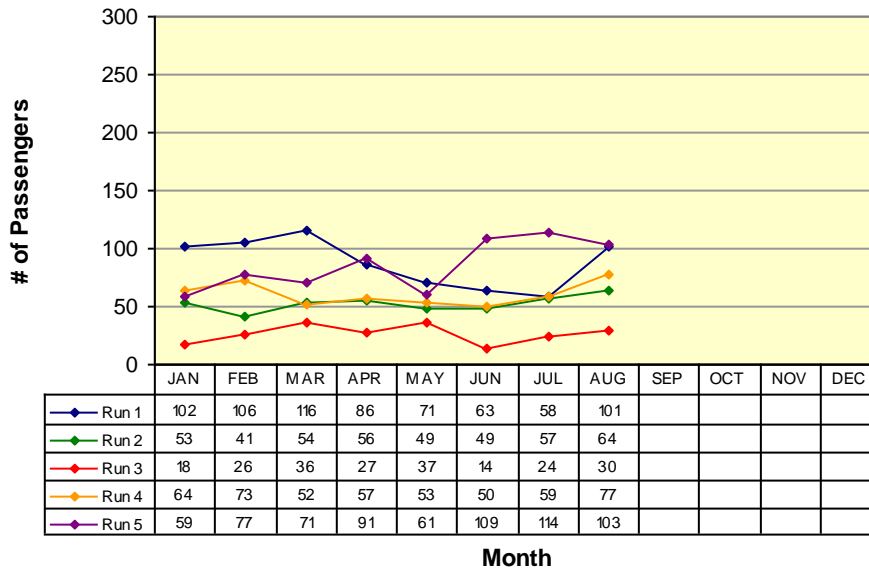
San Andreas / Mokelumne Hill / Jackson

Route 2b(N) (San Andreas to Jackson)



| | |
|---------------|---------|
| RUN 1: | |
| Govt Center | 7:40am |
| Raley's | 8:13am |
| RUN 2: | |
| Govt Center | 9:23am |
| Raley's | 9:53am |
| RUN 3: | |
| Govt Center | 11:00am |
| Raley's | 11:33am |
| RUN 4: | |
| Govt Center | 1:30pm |
| Raley's | 2:03pm |
| RUN 5: | |
| Govt Center | 4:10pm |
| Raley's | 4:44pm |

Route 2b(S) (Jackson to San Andreas)

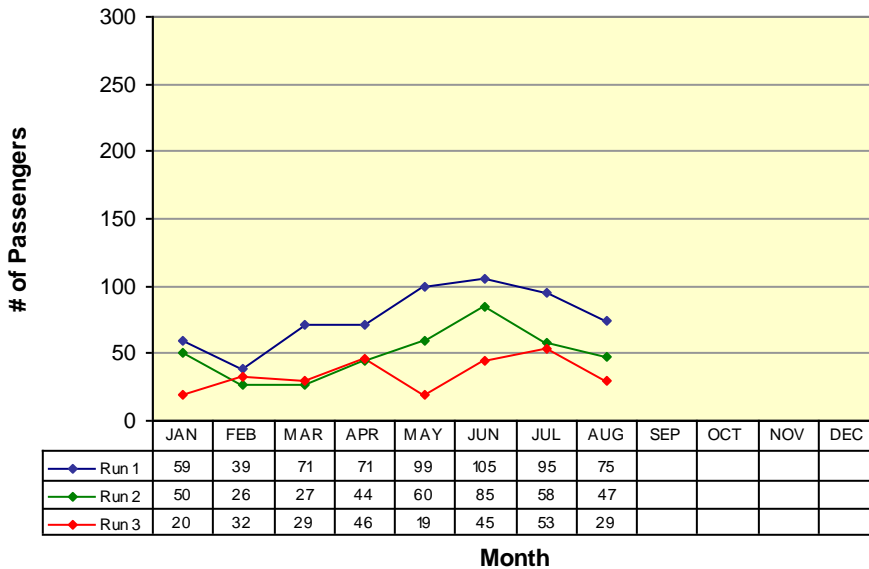


| | |
|---------------|---------|
| RUN 1: | |
| Raley's | 8:18am |
| Govt Center | 8:48am |
| RUN 2: | |
| Raley's | 10:23am |
| Govt Center | 10:53am |
| RUN 3: | |
| Raley's | 11:40am |
| Govt Center | 12:10pm |
| RUN 4: | |
| Raley's | 2:07pm |
| Govt Center | 2:37pm |
| RUN 5: | |
| Raley's | 5:07pm |
| Govt Center | 5:45pm |

ROUTE 3

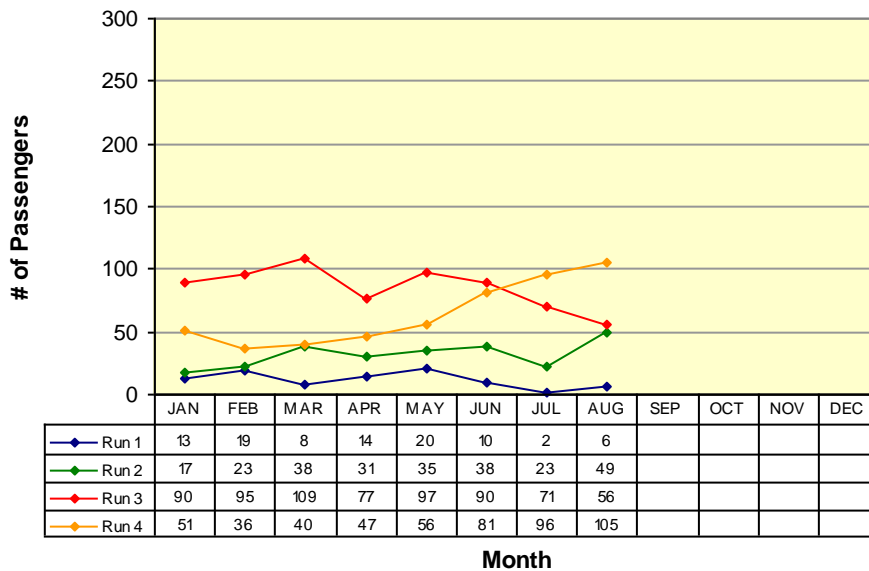
West Point / Glencoe / Mokelumne Hill / San Andreas

Route 3(W) (West Point to San Andreas)



RUN 1:
Community Hall 6:50am
Govt Center 7:40am
RUN 2:
Community Hall 11:00am
Govt Center 11:50am
RUN 3:
Community Hall 4:00pm
Govt Center 4:50pm

Route 3(E) (San Andreas to West Point)

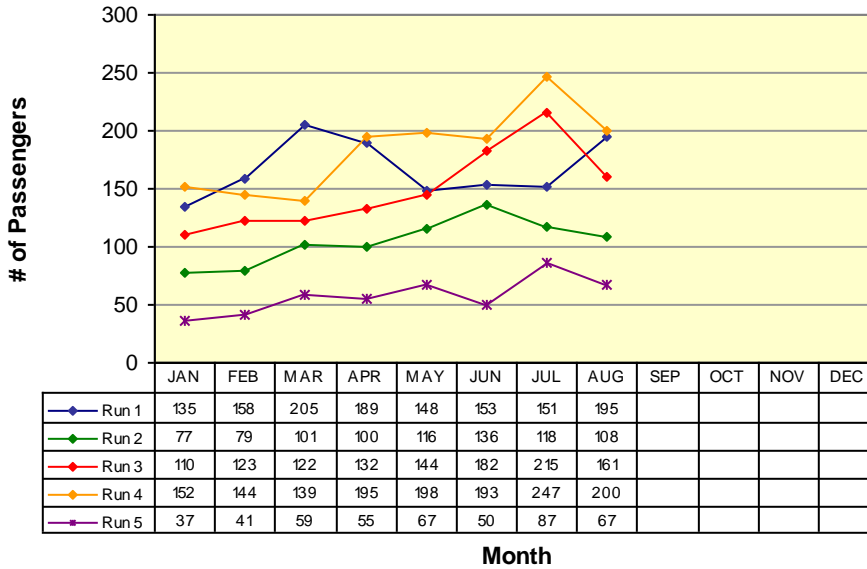


RUN 1:
Moke Hill STP 6:15am
Community Hall 6:50am
RUN 2:
Govt Center 10:00am
Community Hall 10:50am
RUN 3:
Govt Center 3:00pm
Community Hall 3:50pm
RUN 4:
Govt Center 5:20pm
Community Hall 6:10pm

ROUTE 4a

Arnold / Avery / Forest Meadows / Murphys / Angels Camp

Route 4a(W) (Arnold to Angels Camp)



RUN 1:
Post Office 6:15am
Save Mart 7:15am

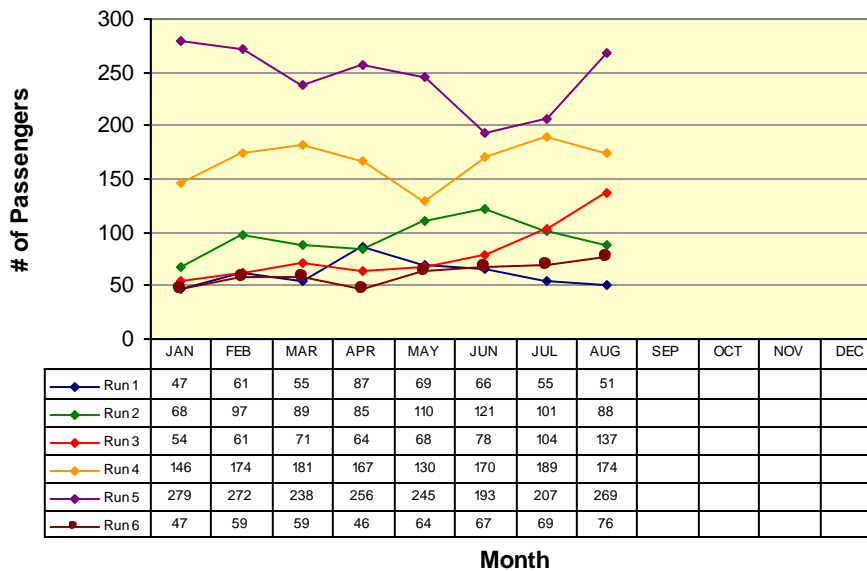
RUN 2:
Post Office 9:30am
Save Mart 10:10am

RUN 3:
Post Office 12:00pm
Save Mart 12:45pm

RUN 4:
Post Office 3:00pm
Save Mart 4:00pm

RUN 5:
Post Office 6:25pm
Save Mart 7:04pm

Route 4a(E) (Angels Camp to Arnold)



RUN 1:
Save Mart 5:44am
Post Office 6:15am

RUN 2:
Save Mart 8:35am
Post Office 9:15am

RUN 3:
Save Mart 11:00am
Post Office 11:40am

RUN 4:
Save Mart 2:20pm
Post Office 3:00pm

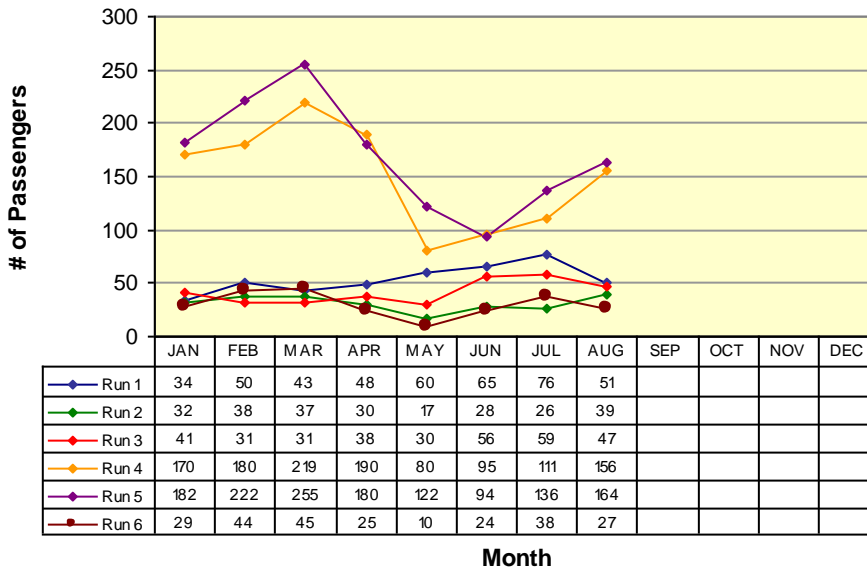
RUN 5:
Save Mart 5:35pm
Post Office 6:15pm

RUN 6:
Save Mart 9:47pm
Post Office 10:27pm

Route 4b

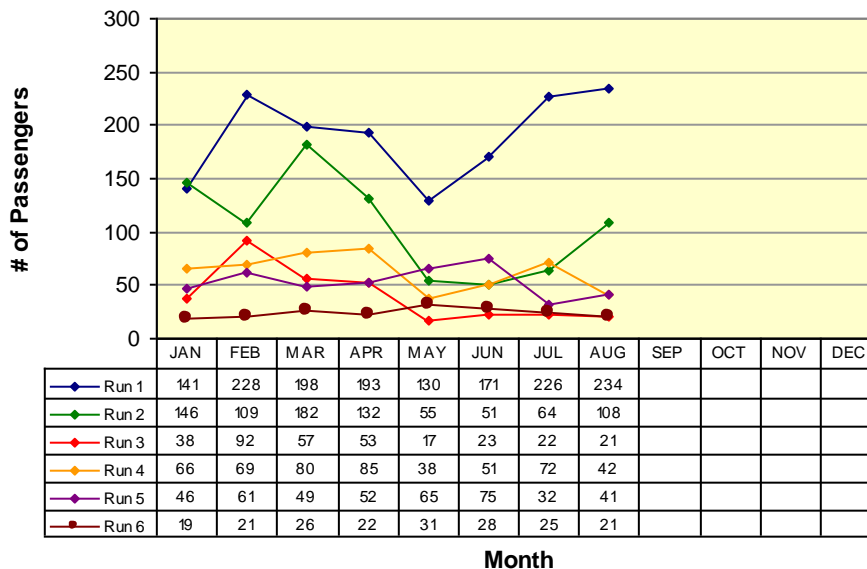
Angels Camp / Calaveras Center / Columbia College

Route 4b(N) (Columbia College to Angels Camp)



| | |
|---------------|---------|
| RUN 1: | |
| Oak Pavilion | 7:58am |
| Save Mart | 8:35am |
| RUN 2: | |
| Oak Pavilion | 10:18am |
| Save Mart | 11:00am |
| RUN 3: | |
| Oak Pavilion | 11:08am |
| Save Mart | 12:00pm |
| RUN 4: | |
| Oak Pavilion | 1:40pm |
| Save Mart | 2:20pm |
| RUN 5: | |
| Oak Pavilion | 5:00pm |
| Save Mart | 5:35pm |
| RUN 6: | |
| Oak Pavilion | 9:10pm |
| Save Mart | 9:47pm |

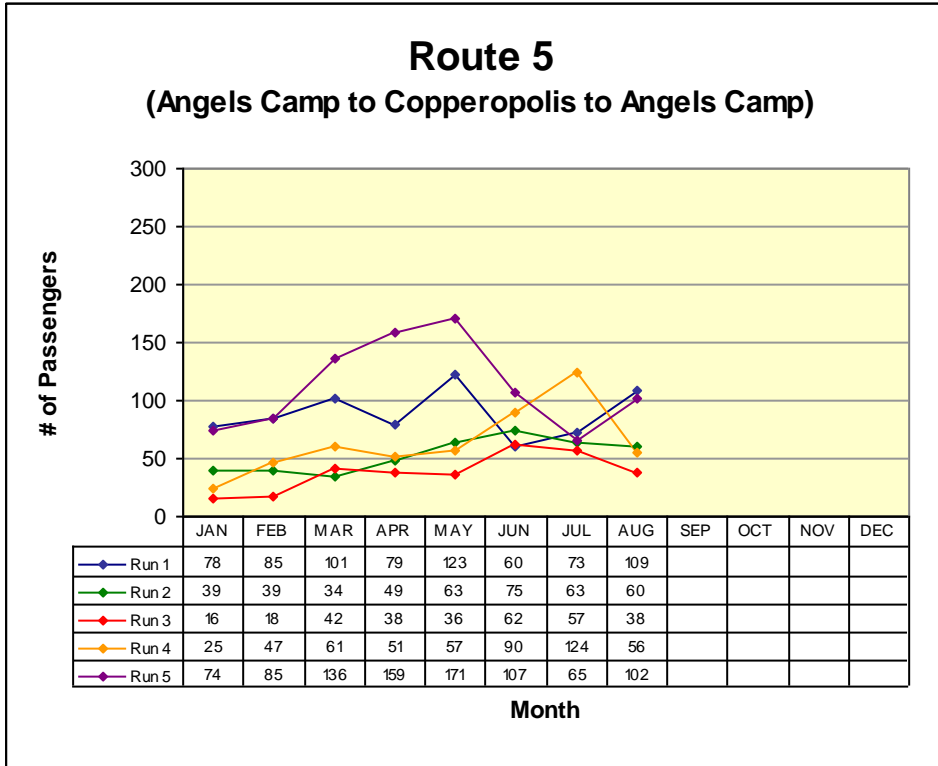
Route 4b(S) (Angels Camp to Columbia College)



| | |
|---------------|---------|
| RUN 1: | |
| Save Mart | 7:15am |
| Oak Pavilion | 7:50am |
| RUN 2: | |
| Save Mart | 9:30am |
| Oak Pavilion | 10:10am |
| RUN 3: | |
| Save Mart | 10:10am |
| Oak Pavilion | 10:52am |
| RUN 4: | |
| Save Mart | 12:45pm |
| Oak Pavilion | 1:30pm |
| RUN 5: | |
| Save Mart | 4:00pm |
| Oak Pavilion | 4:42pm |
| RUN 6: | |
| Save Mart | 8:20pm |
| Oak Pavilion | 9:02pm |

Route 5

Angels Camp / Copperopolis / Angels Camp



RUN 1:
Save Mart 6:15am
Save Mart 7:15am

RUN 2:
Save Mart 11:00am
Save Mart 12:00pm

RUN 3:
Save Mart 12:00pm
Save Mart 1:00pm

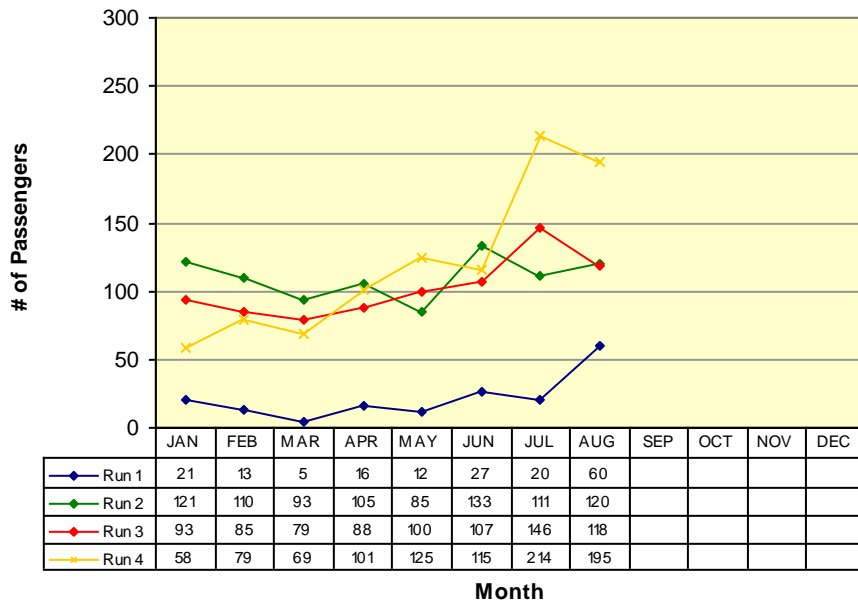
RUN 4:
Save Mart 3:00pm
Save Mart 4:00pm

RUN 5:
Save Mart 5:35pm
Save Mart 6:35pm

Route 6

San Andreas / Valley Springs / Wallace / Clements / Lockeford / Victor / Lodi

San Andreas to Lodi (W)



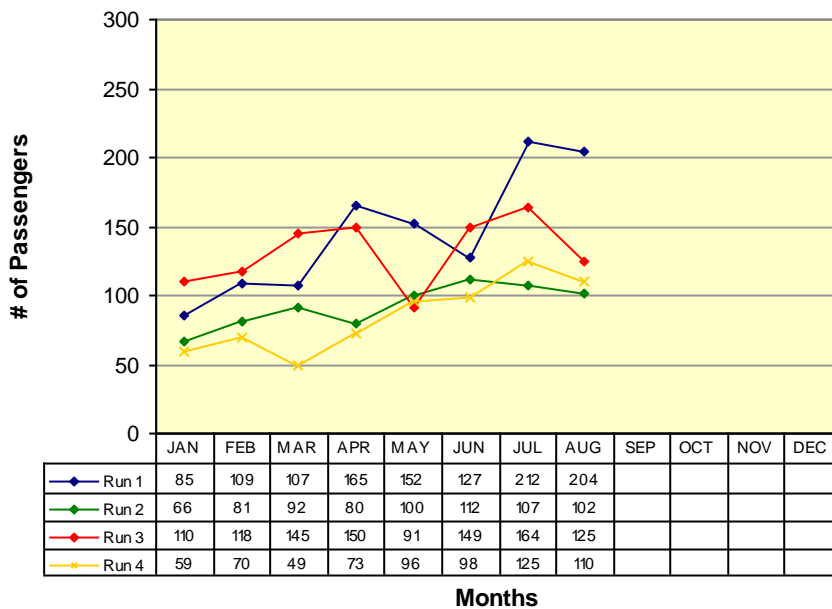
RUN 1:
Govt Center 5:50am
Lodi Station 6:45am

RUN 2:
Govt Center 9:05am
Lodi Station 10:15am

RUN 3:
Govt Center 12:20pm
Lodi Station 1:15pm

RUN 4:
Govt Center 5:10pm
Lodi Station 6:15pm

Lodi to San Andreas (E)



RUN 1:
Lodi Station 6:50am
Govt Center 7:55am

RUN 2:
Lodi Station 10:30am
Govt Center 11:38am

RUN 3:
Lodi Station 1:30pm
Govt Center 2:40pm

RUN 4:
Lodi Station 6:30pm
Govt Center 7:40pm

VI. Vehicles Report

| <i>Vehicle #</i> | <i>End Miles</i> | <i>Miles this Month</i> | <i>Miles YTD</i> | <i>Fuel Mileage</i> | <i>Breakdown Frequency</i> | <i>Repair Costs</i> | <i>Major Components Repaired / Replaced</i> |
|------------------|------------------|-------------------------|------------------|---------------------|----------------------------|---------------------|--|
| Bus 52 | 345071 | 1709 | 4395 | 4.6 | 4395 | | |
| Bus 442 | 233710 | 4545 | 9325 | 8.4 | 2296 | \$117.00 | Left rear caliper, power steering hose pressure assembly |
| Bus 54 | 304566 | 3624 | 8443 | 8.3 | 531 | | |
| Bus 55 | 287558 | 4724 | 9676 | 8.3 | 112155 | | |
| Bus 56 | 194987 | 2284 | 5214 | 8.6 | 0 | | |
| Bus 57 | 232272 | 3924 | 6582 | 9.9 | 12 | \$544.73 | A/C compressor & manifold hose set |
| Bus 58 | 2696 | 0 | 0 | 0.0 | 2696 | | |
| Bus 59 | 14999 | 5463 | 12001 | 8.6 | 14999 | | |
| Bus 60 | 14821 | 5189 | 11296 | 7.7 | 14821 | | |
| Bus 61 | 11965 | 5140 | 7864 | 8.7 | 11965 | | |
| Bus 62 | 12647 | 5594 | 8323 | 8.5 | 12647 | | |

VII. Service Disruption Summary

| DATE | SCHED. TIME | ROUTE | BUS # | LOCATION | REASON | MINUTES DELAYED |
|--------|-------------|-------|-------|-------------|---------------------------|-----------------|
| 8/1/08 | 6:15 | 4 | 55 | Arnold P.O. | Flagdowns & deviations | 24 |
| 8/1/08 | 18:25 | 4 | 62 | Arnold P.O. | Roadwork | 20 |
| 8/1/08 | 19:04 | 4 | 62 | Save Mart | Roadwork | 31 |
| 8/1/08 | 16:20 | 1 | 59 | Govt Center | Deviations | 20 |
| 8/4/08 | 12:20 | 1 | 62 | Govt Center | Flagdowns & deviations | 16 |
| 8/4/08 | 12:20 | 6 | 60 | Govt Center | Waiting for transfers | 18 |
| 8/5/08 | 13:30 | 6 | 62 | Lodi | Roadwork | 18 |
| 8/5/08 | 15:00 | 5 | 62 | Save Mart | Catching up from roadwork | 16 |
| 8/5/08 | 16:00 | 1 | 62 | Save Mart | Catching up from roadwork | 27 |
| 8/5/08 | 16:20 | 1 | 62 | Govt Center | Catching up from roadwork | 31 |
| 8/5/08 | 12:45 | 4 | 56 | Save Mart | Roadwork | 20 |
| 8/5/08 | 15:00 | 4 | 55 | Arnold P.O. | Roadwork | 18 |
| 8/5/08 | 15:15 | 1 | 442 | La Contenta | Roadwork | 22 |
| 8/5/08 | 15:40 | 1 | 442 | Govt Center | Catching up from roadwork | 20 |

VII. Service Disruption Summary

| DATE | SCHED. TIME | ROUTE | BUS # | LOCATION | REASON | MINUTES DELAYED |
|--------|-------------|-------|-------|-------------|------------------------------|-----------------|
| 8/5/08 | 16:00 | 4 | 442 | Save Mart | Catching up from roadwork | 21 |
| 8/6/08 | 12:15 | 1 | 60 | Govt Center | Roadwork | 18 |
| 8/6/08 | 18:10 | 3 | 61 | West Point | Flagdowns & deviations | 17 |
| 8/6/08 | 10:10 | 4 | 59 | Save Mart | Roadwork | 18 |
| 8/6/08 | 14:40 | 1 | 62 | Govt Center | Roadwork | 27 |
| 8/6/08 | 15:00 | 5 | 62 | Save Mart | Catching up from roadwork | 26 |
| 8/6/08 | 16:00 | 1 | 62 | Save Mart | Catching up from roadwork | 29 |
| 8/6/08 | 16:20 | 1 | 62 | Govt Center | Catching up from roadwork | 32 |
| 8/6/08 | 15:00 | 4 | 442 | Arnold P.O. | Roadwork | 24 |
| 8/6/08 | 16:00 | 4 | 442 | Save Mart | Catching up from roadwork | 20 |
| 8/7/08 | 16:00 | 3 | 52 | West Point | Mobility device & deviations | 22 |
| 8/7/08 | 10:10 | 4 | 62 | Save Mart | Roadwork | 18 |
| 8/7/08 | 10:30 | 6 | 61 | Lodi | Bus 57 breakdown | 42 |
| 8/7/08 | 11:38 | 6 | 61 | Govt Center | Route cancelled -breakdown | - |

VII. Service Disruption Summary

| <i>DATE</i> | <i>SCHED. TIME</i> | <i>ROUTE</i> | <i>BUS #</i> | <i>LOCATION</i> | <i>REASON</i> | <i>MINUTES DELAYED</i> |
|-------------|--------------------|--------------|--------------|-----------------|----------------------------------|------------------------|
| 8/7 | 14:00 | 1 | 442 | Govt Center | Mobility device & deviations | 23 |
| 8/7 | 14:20 | 4 | 442 | Save Mart | Catching up from mobility device | 27 |
| 8/7 | 15:00 | 4 | 442 | Arnold P.O. | Catching up from mobility device | 26 |
| 8/7 | 16:00 | 4 | 442 | Save Mart | Catching up from mobility device | 20 |
| 8/7 | 15:40 | 1 | 62 | Govt Center | Roadwork | 17 |
| 8/7 | 16:00 | 4 | 62 | Save Mart | Catching up from roadwork | 16 |
| 8/8 | 15:15 | 1 | 60 | La Contenta | Roadwork | 22 |
| 8/8 | 15:40 | 1 | 60 | Govt Center | Catching up from roadwork | 19 |
| 8/8 | 16:00 | 4 | 60 | Save Mart | Catching up from roadwork | 20 |
| 8/11 | 12:15 | 1 | 59 | Govt Center | Roadwork | 17 |
| 8/11 | 12:45 | 1 | 59 | Save Mart | Catching up from roadwork | 21 |
| 8/11 | 13:05 | 1 | 59 | Govt Center | Catching up from roadwork | 19 |
| 8/11 | 13:30 | 6 | 60 | Lodi | Roadwork | 18 |
| 8/11 | 14:40 | 1 | 60 | Save Mart | Catching up from roadwork | 17 |

VII. Service Disruption Summary

| <i>DATE</i> | <i>SCHED. TIME</i> | <i>ROUTE</i> | <i>BUS #</i> | <i>LOCATION</i> | <i>REASON</i> | <i>MINUTES DELAYED</i> |
|-------------|--------------------|--------------|--------------|-----------------|-----------------------------|------------------------|
| 8/11 | 16:00 | 4 | 62 | Save Mart | Roadwork | 20 |
| 8/12 | 12:00 | 1 | 59 | Save Mart | Roadwork | 16 |
| 8/13 | 17:35 | 4 | 61 | Save Mart | Waiting for transfers | 16 |
| 8/13 | 19:04 | 4 | 61 | Save Mart | Flagdowns & deviations | 17 |
| 8/13 | 17:45 | 2 | 55 | Govt Center | Waiting for transfers | 27 |
| 8/13 | 17:35 | 5 | 57 | Save Mart | Bus 442 breakdown | 55 |
| 8/13 | 18:35 | 5 | 57 | Save Mart | Ca up from breakdown | 63 |
| 8/13 | 17:35 | 4 | 54 | Save Mart | Tuolumne transfer bus late | 20 |
| 8/14 | 12:00 | 1 | 62 | Save Mart | Flagdowns & deviations | 24 |
| 8/14 | 12:20 | 1 | 62 | Govt Center | cat from flagdowns | 21 |
| 8/14 | 14:40 | 1 | 60 | Govt Center | Deviations & transfers | 27 |
| 8/14 | 15:00 | 5 | 60 | Save Mart | Catching up from deviations | 25 |
| 8/14 | 16:00 | 1 | 60 | Save Mart | Catching up from deviations | 38 |
| 8/14 | 16:20 | 1 | 60 | Govt Center | Catching up from deviations | 28 |

VII. Service Disruption Summary

| <i>DATE</i> | <i>SCHED. TIME</i> | <i>ROUTE</i> | <i>BUS #</i> | <i>LOCATION</i> | <i>REASON</i> | <i>MINUTES DELAYED</i> |
|-------------|--------------------|--------------|--------------|-----------------|-----------------------------|------------------------|
| 8/14 | 14:50 | 1 | 55 | Govt Center | Deviations | 20 |
| 8/14 | 15:15 | 1 | 55 | La Contenta | Catching up from deviations | 25 |
| 8/14 | 15:40 | 1 | 55 | Govt Center | Catching up from deviations | 25 |
| 8/14 | 16:00 | 4 | 55 | Save Mart | Catching up from deviations | 25 |
| 8/15 | 11:00 | 2 | 55 | Govt Center | Deviations & roadwork | 26 |
| 8/15 | 12:00 | 5 | 61 | Save Mart | Deviations | 17 |
| 8/15 | 12:20 | 1 | 61 | Govt Center | Catching up from deviations | 16 |
| 8/15 | 15:15 | 1 | 57 | La Contenta | Deviations | 20 |
| 8/15 | 15:40 | 1 | 57 | Govt Center | Catching up from deviations | 20 |
| 8/15 | 16:00 | 4 | 57 | Save Mart | Catching up from deviations | 35 |
| 8/20 | 11:45 | 1 | 59 | La Contenta | Roadwork | 17 |
| 8/20 | 12:15 | 1 | 59 | Govt Center | Roadwork | 24 |
| 8/20 | 13:05 | 1 | 59 | Govt Center | Catching up from roadwork | 17 |
| 8/20 | 16:45 | 1 | 60 | La Contenta | Roadwork | 21 |

VII. Service Disruption Summary

| <i>DATE</i> | <i>SCHED. TIME</i> | <i>ROUTE</i> | <i>BUS #</i> | <i>LOCATION</i> | <i>REASON</i> | <i>MINUTES DELAYED</i> |
|-------------|--------------------|--------------|--------------|-----------------|----------------------------------|------------------------|
| 8/20 | 17:10 | 6 | 60 | Govt Center | Roadwork | 16 |
| 8/20 | 6:30 | 1 | 442 | La Contenta | Trading out buses | 17 |
| 8/20 | 6:55 | 1 | 442 | Govt Center | Catching up from trading buses | 19 |
| 8/20 | 7:15 | 1 | 442 | Save Mart | Catching up from trading buses | 18 |
| 8/20 | 11:38 | 1 | 442 | Govt Center | Mobility device & deviations | 42 |
| 8/20 | 11:55 | 1 | 442 | Save Mart | Catching up from mobility device | 45 |
| 8/20 | 16:00 | 5 | 52 | Save Mart | Flagdowns & deviations | 19 |
| 8/20 | 16:20 | 1 | 52 | Govt Center | Catching up from deviations | 17 |
| 8/22 | 18:25 | 4 | 62 | Arnold P.O. | Waiting for transfers | 23 |
| 8/22 | 19:04 | 4 | 62 | Save Mart | Catching up from transfers | 21 |
| 8/22 | 11:38 | 1 | 57 | Govt Center | Mobility device & deviations | 20 |
| 8/22 | 11:55 | 1 | 57 | Save Mart | Catching up from mobility device | 23 |
| 8/25 | 8:35 | 4 | 62 | Save Mart | Accident blocked road | 20 |
| 8/25 | 11:38 | 6 | 55 | Govt Center | Mobility device & deviations | 18 |

VII. Service Disruption Summary

| DATE | SCHED. TIME | ROUTE | BUS # | LOCATION | REASON | MINUTES DELAYED |
|---------|-------------|-------|-------|---------------|----------------------------------|-----------------|
| 8/25/08 | 11:55 AM | 1 | 55 | Save Mart | Catching up from mobility device | 20 |
| 8/26/08 | 6:30 PM | 6 | 54 | Lodi | Bus breakdown - replacement | 87 |
| 8/26/08 | 7:40 PM | 6 | 61 | Govt Center | Catching up from breakdown | 82 |
| 8/26/08 | 8:00 PM | 1 | 61 | Save Mart | Catching up from breakdown | 79 |
| 8/26/08 | 5:10 PM | 1 | 60 | Govt Center | Waiting for transfers | 19 |
| 8/26/08 | 6:25 PM | 4 | 60 | Arnold P.O. | Flagdowns & deviations | 17 |
| 8/26/08 | 7:04 PM | 4 | 60 | Save Mart | Catching up from deviations | 18 |
| 8/27/08 | 6:15 AM | 4 | 59 | Arnold P.O. | Flagdowns & deviations | 25 |
| 8/27/08 | 7:15 AM | 4 | 59 | Save Mart | Catching up from deviations | 20 |
| 8/27/08 | 4:00 PM | 5 | 62 | Save Mart | Deviations | 20 |
| 8/27/08 | 4:20 PM | 1 | 62 | Govt Center | Catching up from deviations | 20 |
| 8/27/08 | 5:45 PM | 2 | 54 | Govt Center | Bus wouldn't start | 36 |
| 8/27/08 | 6:30 PM | 2 | 54 | Railroad Flat | Catching up from not starting | 18 |
| 8/29/08 | 1:30 PM | 6 | 61 | Lodi | Mobility device & deviations | 25 |

VII. Service Disruption Summary

| DATE | SCHED. TIME | ROUTE | BUS # | LOCATION | REASON | MINUTES DELAYED |
|------|-------------|-------|-------|-----------|----------------------------------|-----------------|
| 8/29 | 16:00 | 5 | 61 | Save Mart | Catching up from mobility device | 18 |
| 8/29 | 17:35 | 1 | 54 | Save Mart | Bus breakdown - replacement | 22 |
| | | | | | | |
| | | | | | | |
| | | | | | | |
| | | | | | | |
| | | | | | | |
| | | | | | | |
| | | | | | | |
| | | | | | | |
| | | | | | | |
| | | | | | | |
| | | | | | | |
| | | | | | | |
| | | | | | | |

VIII. Fleet Maintenance Report

| Identified Concern | Bus | Date Filed | Action Taken | Date Reconsiled | Completed By |
|--|-----|------------|---|-----------------|--------------|
| Upper clearance lamp out | 442 | 4-Aug | Replace upper clearance lamp and bracket | 5-Aug | RB |
| Rubber spring assembly torn | 55 | 7-Aug | Replace assembly | 7-Aug | RB |
| Low battery | 442 | 11-Aug | Replace both batteries and 2 cable jumpers | 12-Aug | RB |
| Rear tires worn | 54 | 12-Aug | Replace all rear tiress | 12-Aug | RB |
| Rumbling noise and smoking | 57 | 7-Aug | Bus towed from Lodi, replace a/c compressor and hose manifold set; replace accessory drive belt idler | 12-Aug | RB |
| Bus leaking power steering | 442 | 13-Aug | Replaced power steering pressure hose assembly | 18-Aug | RB |
| Fuel leaking at intake | 60 | 18-Aug | Reseal fuel filler neck | 18-Aug | RB |
| Wheelchair lift door strut prop disconnected | 54 | 18-Aug | Reconnected strut prop | 19-Aug | RB |
| Brakes mushy - low pedal | 442 | 26-Aug | Replace left rear caliper, flush system, replace fluid and bleed system | 26-Aug | RB |

IX. Wheelchair Lift Use

For the month of: July 2008

| Date | Vehicle # | Pick up Point | Drop off Point | Pick-up time | Drop-off time | Uses |
|------|-----------|-----------------|---------------------|--------------|---------------|------|
| 8/7 | 442 | Bear Mt. Apts. | Dr. Oliver | 1406 | 1418 | 2 |
| 8/7 | 52 | Dr. Oliver | Bear Mt. Apts. | 1507 | 1527 | 2 |
| 8/18 | 54 | Kellys | Save Mart | 903 | 932 | 2 |
| 8/18 | 61 | Save Mart | Treats | 1103 | 1133 | 2 |
| 8/20 | 442 | Lodi | Wallace | 1040 | 1130 | 2 |
| 8/20 | 54 | Sierra Meadows | Klines | 1510 | 1525 | 2 |
| 8/20 | 54 | Arnold P.O. | Taylor Plaza | 1515 | 1545 | 2 |
| 8/21 | 59 | Sierra Meadows | Murphys Masonic Hal | 936 | 1000 | 2 |
| 8/21 | 442 | Murphys Masonic | Klines | 1126 | 1154 | 2 |
| 8/22 | 57 | Lodi | Wallace | 1038 | 1117 | 2 |
| 8/25 | 54 | Lodi | Wallace | 1038 | 1119 | 2 |
| 8/29 | 57 | Lodi | Senior Center | 1036 | 1152 | 2 |
| 8/29 | 61 | Senior Center | Wallace | 1228 | 1321 | 2 |