



## Monthly Operations Report



MV Transportation, Inc.

# I. Project Manager's Summary

**From:** Annie Self, Calaveras Transit General Manager  
MV Transportation, Inc.  
750 Industrial Way - P. O. Box 1385  
San Andreas, Ca 95249  
Phone (209) 754-4450  
Fax (209) 754-9086

**To:** Calaveras County  
C/o Nathan Atherstone  
Transit Manager, Public Works  
891 Mountain Ranch Road  
San Andreas, CA 95249

## **On time performance checks:**

On time performance was checked throughout the month of September. On time percentage for service in July was 96%.

## **Trends:**

When comparing August and September we found there were 100 fewer passenger trips in September than in August.

Route 1 had 2,121 passenger trips in August, and had 2,112 passenger trips in September. There was a decrease of 9 passenger trips on Route 1 in September.

Route 2 had 730 passenger trips in August and 663 passenger trips in September. There was a decrease of 67 passenger trips on Route 2 in September.

Route 3 had 290 passenger trips in August and 202 passenger trips in September. There was a decrease of 88 passenger trips on Route 3 in September.

Route 4 had 2,164 passenger trips in August and 2,251 passenger trips in September. There was an increase of 87 passenger trips on Route 4 in September.

The Lodi route had 511 passenger trips in August and 488 passenger trips in September. There was a decrease of 23 passenger trips on The Lodi Route in September.

## **Comments/Compliments/Complaints:**

There were no comments, compliments, or complaints received in the month of September.

**Safety and Training:**

The Safety Meetings for the month of September were held on Wednesday September 12. The main focus of the meetings was Driving with the Smith Systems.

There was 1 preventable incident involving a Calaveras Transit vehicle in September. While pulling away from the fuel pumps the operator turned the vehicle too soon causing damage to the driver's side rear wheel well. Retraining was conducted to insure this type of incident does not occur again. All damage to the vehicle was repaired, and the vehicle returned to service upon conclusion of our investigation.

**Overview:**

September was a short service month. Although monthly passenger trip totals decreased, average daily passenger trips increased.

As a comparison, September 2006 passenger count for the same amount of service days was 4,860, so we have increased passenger count by 856 in one year's time.



### III. Deposit Summary

#### Current Month Deposit Summary

Date	Collection Period	Tickets	DAR	Fixed Rt	Special	Total
9/6	9/4 - 9/5	\$1,643.50		\$209.00		\$1,852.50
9/7	9/6	\$15.00		\$130.00		\$145.00
9/10	9/7	\$10.00		\$103.00		\$113.00
9/11	9/10	\$47.50		\$154.00		\$201.50
9/12	9/11	\$22.50		\$106.50		\$129.00
9/13	9/12	\$30.00		\$143.50		\$173.50
9/14	9/13	\$64.00		\$137.00		\$201.00
9/17	9/14	\$67.00		\$145.00		\$212.00
9/18	9/17	\$2.50		\$139.00		\$141.50
9/19	9/18	\$12.50		\$132.00		\$144.50
9/20	9/19	\$106.00		\$153.50		\$259.50
9/21	9/20			\$107.00		\$107.00
9/24	9/21	\$10.00		\$130.50		\$140.50
9/25	9/24	\$2.50		\$147.50		\$150.00
9/26	9/25	\$22.50		\$109.00		\$131.50
9/27	9/26			\$143.50	\$178.75	\$322.25
9/28	9/27	\$22.50		\$130.50		\$153.00
10/1	9/28	\$102.50		\$140.00		\$242.50
		\$2,180.50	\$0.00	\$2,460.50	\$178.75	\$4,819.75

**Notes:**

October 1st deposit for September vault count

Matches county deposit records?



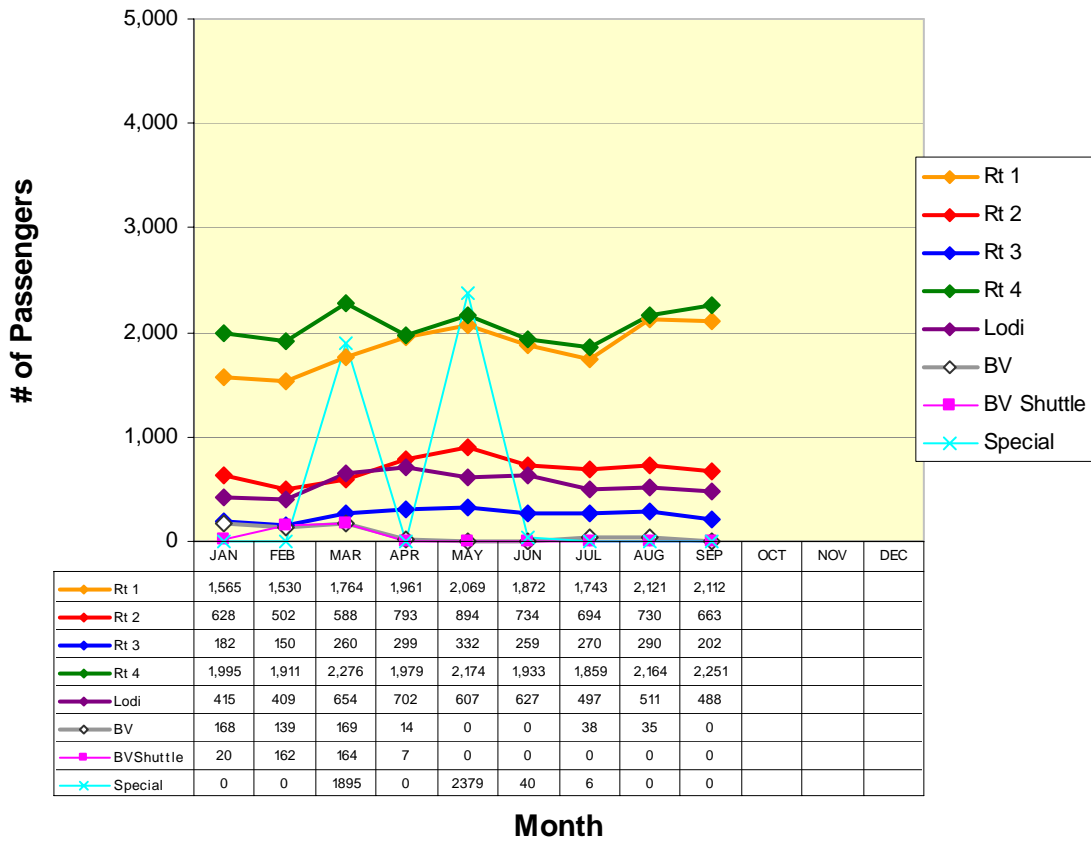
## IV. Current Month Operational Statistics

	Fixed Rt.	Lodi	Special	Bear Valley	BV Shuttle	Total
Ridership	5228	488	0	0	0	5,716
Vehicle Hours	958.62	135.97	0.00	0.00	0.00	1,094.58
Vehicle Service Hours	807.87	129.15	0.00	0.00	0.00	937.02
Operating Days	19	19	0	0	0	19
Vehicle Service Miles	24,831	4,325	0	0	0	29,156

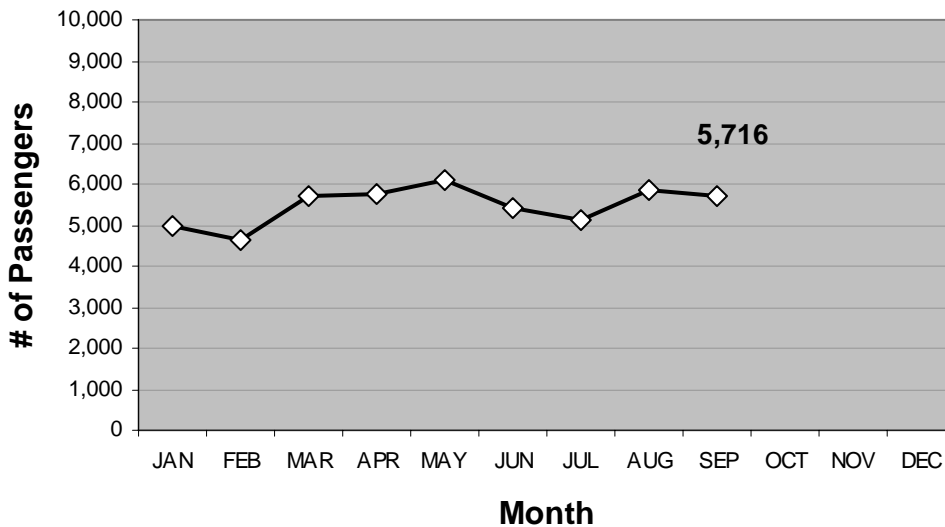
	Rt 1	Rt 2	Rt 3	Rt 4	LODI	All
Cash Regular	391	145	65	676	159	1,436
Cash Discount	313	116	42	557	93	1,121
Pass Regular	58	2	1	21	4	86
Pass Discount	236	113	42	160	86	637
Ticket Regular	140	76	8	50	30	304
Ticket Discount	260	62	8	279	38	647
Transfer	545	104	15	400	44	1,108
Promo	0	0	0	0	0	0
Free	108	13	4	36	25	186
Day Pass	61	32	17	72	9	191
Total Passenger #	2,112	663	202	2,251	488	5,716

# V. Ridership Trends

## Calaveras Transit Ridership



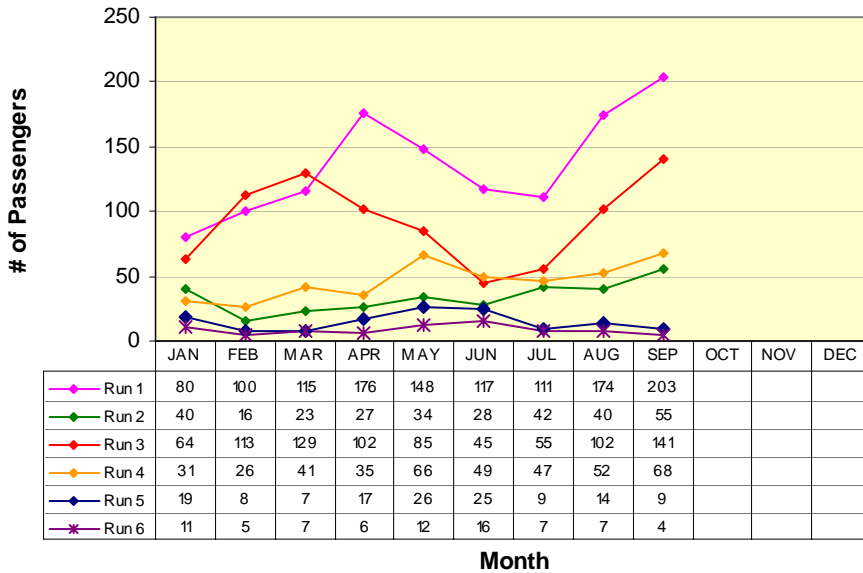
## Fixed Route Ridership



# ROUTE 1a

Rancho Calaveras / Valley Springs / San Andreas

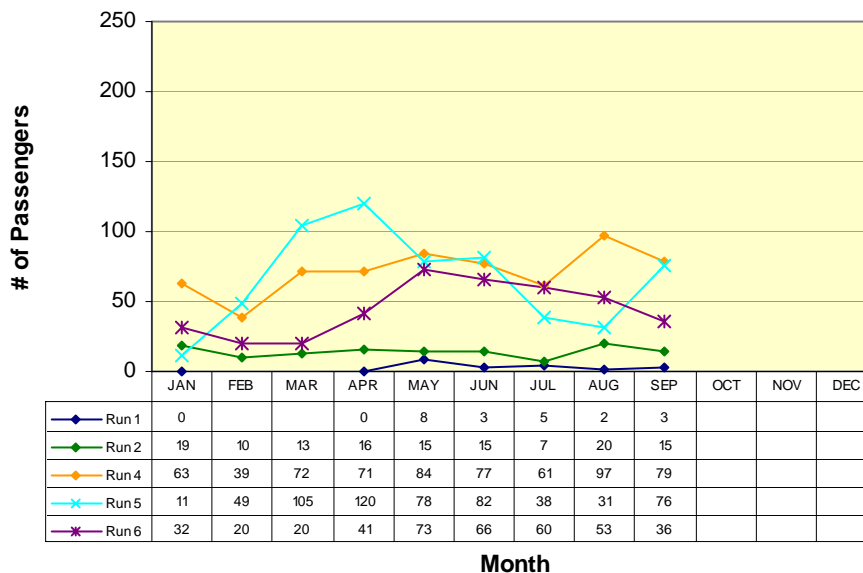
## Route 1a(E) (Rancho Calaveras to San Andreas\*)



- RUN 1:**  
La Contenta (S) 7:00am  
Govt Center 7:40am
- RUN 2:**  
Valley Oak Center 7:57am  
Govt Center 8:16am
- RUN 3:**  
La Contenta (N) 8:22am  
Govt Center 9:11am
- RUN 4:**  
La Contenta (N) 11:54am  
Govt Center 12:19pm
- RUN 5:**  
Valley Oak Center 5:00pm  
Govt Center 5:20pm
- RUN 6:**  
La Contenta (N) 5:49pm  
Govt Center 6:14pm

\*Does not include Lodi Service runs

## Route 1a(W) (Government Center to Rancho Calaveras\*)



- RUN 1: (#)**  
Govt Center 6:40am  
La Contenta (S) 7:00am
- RUN 2:**  
Govt Center 7:40am  
Valley Oak Center 7:56am
- RUN 3: (X)**  
Govt Center 3:45pm  
Valley Oak Center 5:00pm
- RUN 4:**  
Govt Center 11:20am  
La Contenta (N) 11:54am
- RUN 5:**  
Govt Center 1:00pm  
Valley Oak Center 1:17pm
- RUN 6:**  
Govt Center 5:15pm  
La Contenta (N) 5:49pm

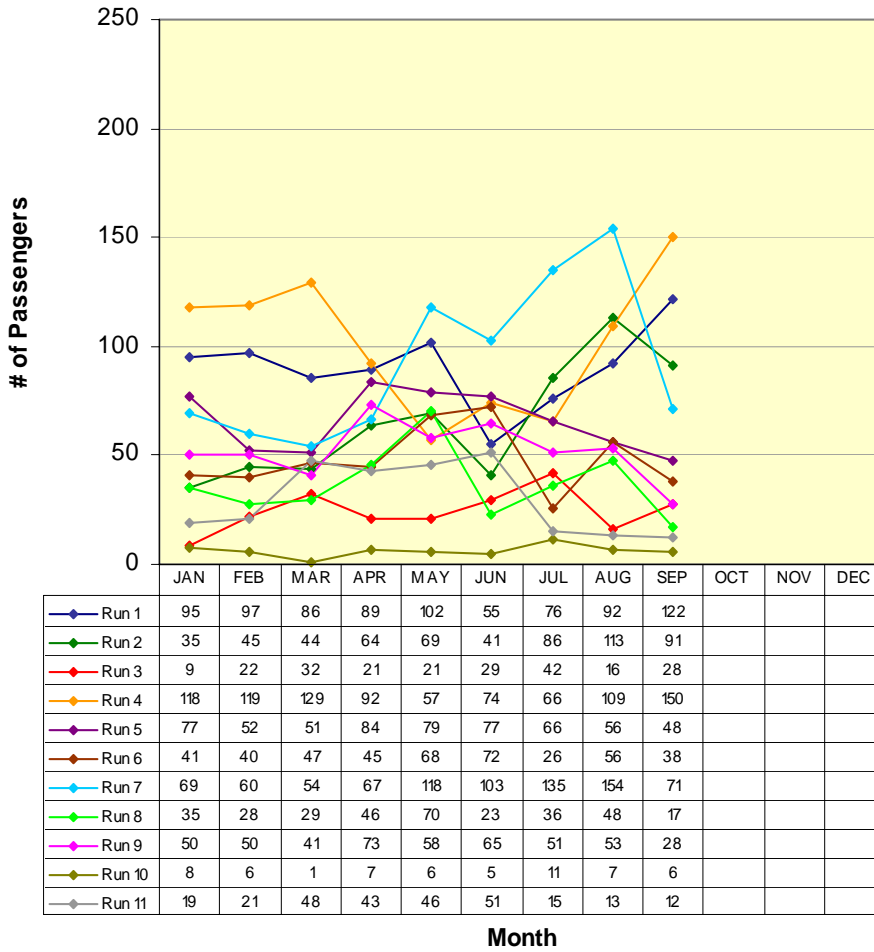
(#) New run started 4/25/07  
(X) Former Milton Run

\* Does not include Lodi Service runs

# ROUTE 1b

San Andreas / Angels Camp

## Route 1b(S) (San Andreas to Angels Camp)



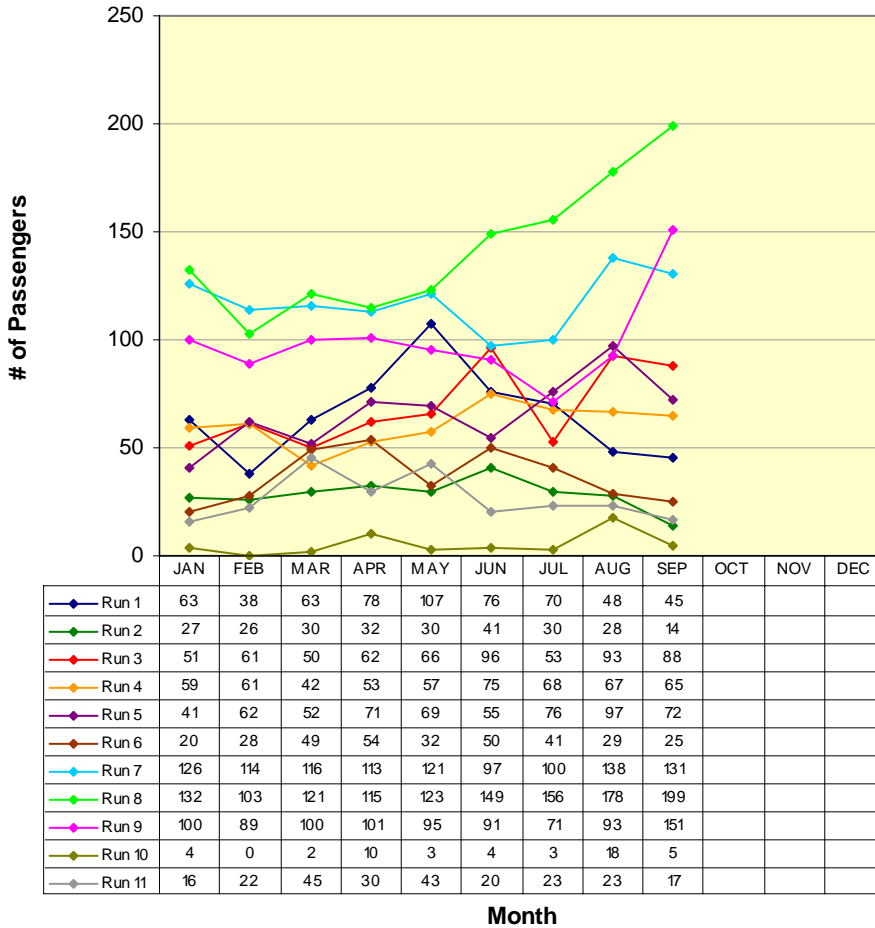
<b>RUN 1:</b>	S.A. Post Office	6:45am
	Visitor's Center	7:10am
<b>RUN 2:</b>	Govt Center	7:40am
	Visitor's Center	8:00am
<b>RUN 3:</b>	Govt Center	8:16am
	Visitor's Center	8:34am
<b>RUN 4:</b>	Govt Center	9:11am
	Visitor's Center	9:30am
<b>RUN 5:</b>	Govt Center	11:38am
	Visitor's Center	12:00pm
<b>RUN 6:</b>	Govt Center	12:19pm
	Visitor's Center	12:40pm
<b>RUN 7:</b>	Govt Center	2:40pm
	Visitor's Center	3:00pm
<b>RUN 8:</b>	Govt Center	3:20pm
	Visitor's Center	4:00pm
<b>RUN 9:</b>	Govt Center	5:15pm
	Visitor's Center	5:35pm
<b>RUN 10:</b>	Govt Center	6:14pm
	Visitor's Center	6:35pm
<b>RUN 11:</b>	Govt Center	7:08pm
	Visitor's Center	7:30pm

*\*Not all runs end in same location*

# ROUTE 1b

San Andreas / Angels Camp

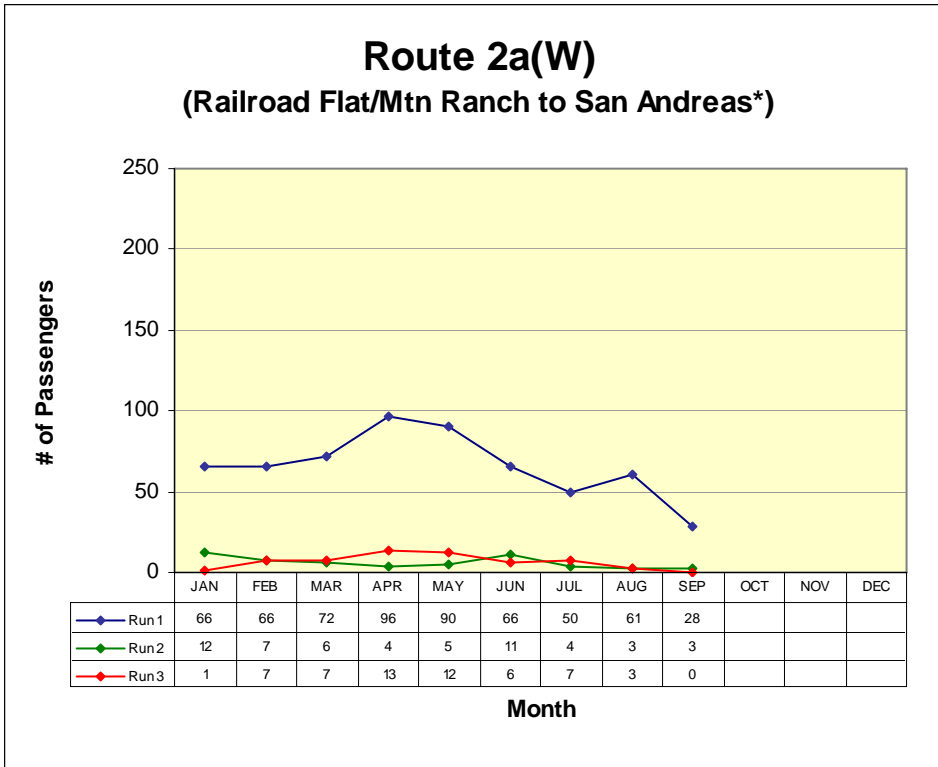
## Route 1b(N) (Angels Camp to San Andreas)



<b>RUN 1:</b>	
Save Mart	7:10am
Govt Center	7:40am
<b>RUN 2:</b>	
Save Mart	8:00am
H.S. St. / Hwy. 49	8:24am
<b>RUN 3:</b>	
Save Mart	9:00am
Govt Center	9:20am
<b>RUN 4:</b>	
Save Mart	11:00am
Govt Center	11:20am
<b>RUN 5:</b>	
Save Mart	12:00pm
Govt Center	12:20pm
<b>RUN 6:</b>	
Save Mart	12:40pm
Govt Center	1:00pm
<b>RUN 7:</b>	
Save Mart	3:00pm
Govt Center	3:20pm
<b>RUN 8:</b>	
Save Mart	4:00pm
Govt Center	4:20pm
<b>RUN 9:</b>	
Save Mart	5:35pm
H.S. St. / Hwy. 49	5:59pm
<b>RUN 10:</b>	
Save Mart	6:35pm
H.S. St. / Hwy. 49	6:59pm
<b>RUN 11:</b>	
Save Mart	7:30pm
H.S. St. / Hwy. 49	7:54pm

# ROUTE 2a

Railroad Flat / Mountain Ranch / San Andreas

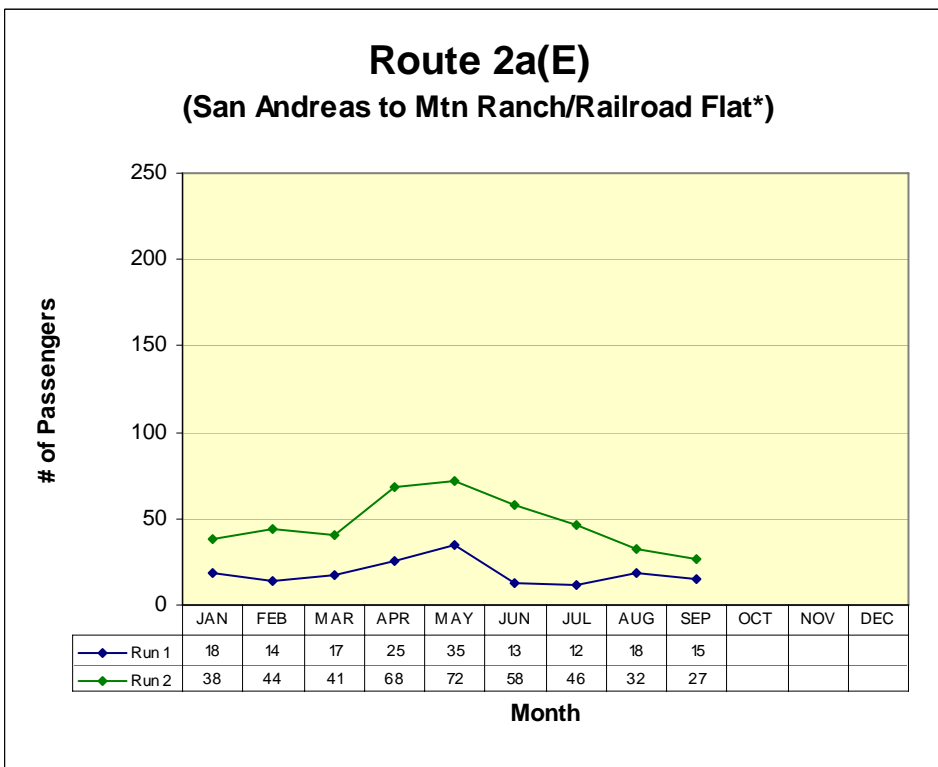


**RUN 1:**  
Community Center 7:00am  
Govt Center 7:40am

**RUN 2:**  
Blunder Inn 9:10am  
Govt Center 9:23am

**RUN 3:**  
Community Center 6:30pm  
Govt Center 7:00pm

*\*Not all runs begin in same location*



**RUN 1:**  
Govt Center 8:48am  
Blunder Inn 9:01am

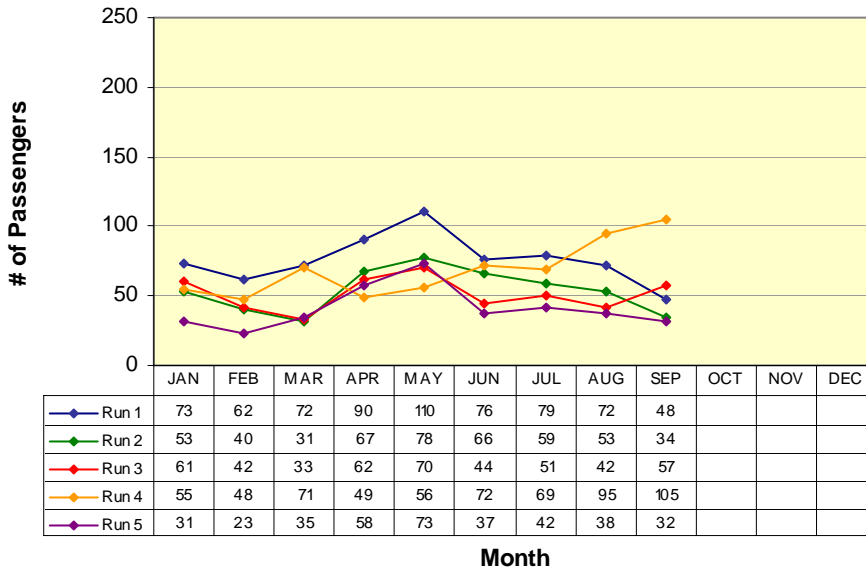
**RUN 2:**  
Govt Center 5:55pm  
Community Hall 6:30pm

*\*Not all runs end in same location*

# ROUTE 2b

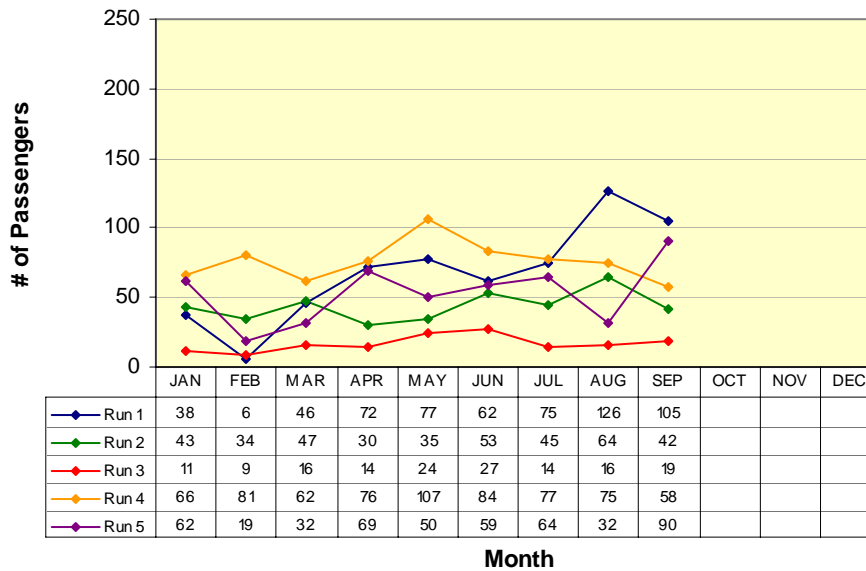
San Andreas / Mokelumne Hill / Jackson

## Route 2b(N) (San Andreas to Jackson)



<b>RUN 1:</b>	
Govt Center	7:40am
Raley's	8:13am
<b>RUN 2:</b>	
Govt Center	9:23am
Raley's	9:53am
<b>RUN 3:</b>	
Govt Center	11:00am
Raley's	11:33am
<b>RUN 4:</b>	
Govt Center	1:30pm
Raley's	2:03pm
<b>RUN 5:</b>	
Govt Center	4:10pm
Raley's	4:44pm

## Route 2b(S) (Jackson to San Andreas)

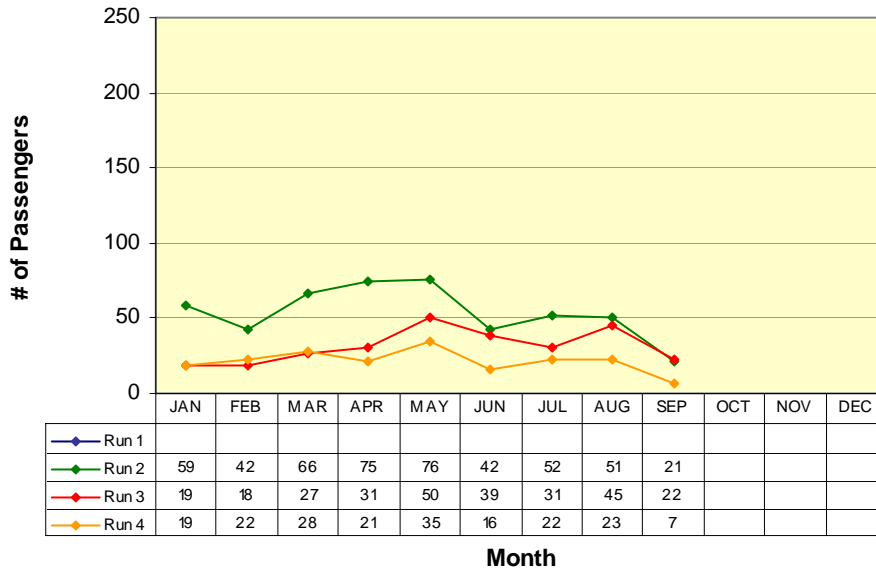


<b>RUN 1:</b>	
Raley's	8:18am
Govt Center	8:48am
<b>RUN 2:</b>	
Raley's	10:23am
Govt Center	10:53am
<b>RUN 3:</b>	
Raley's	11:40am
Govt Center	12:10pm
<b>RUN 4:</b>	
Raley's	2:07pm
Govt Center	3:00pm
<b>RUN 5:</b>	
Raley's	5:07pm
Govt Center	5:45pm

# ROUTE 3

West Point / Glencoe / Mokelumne Hill / San Andreas

## Route 3(W) (West Point to San Andreas)



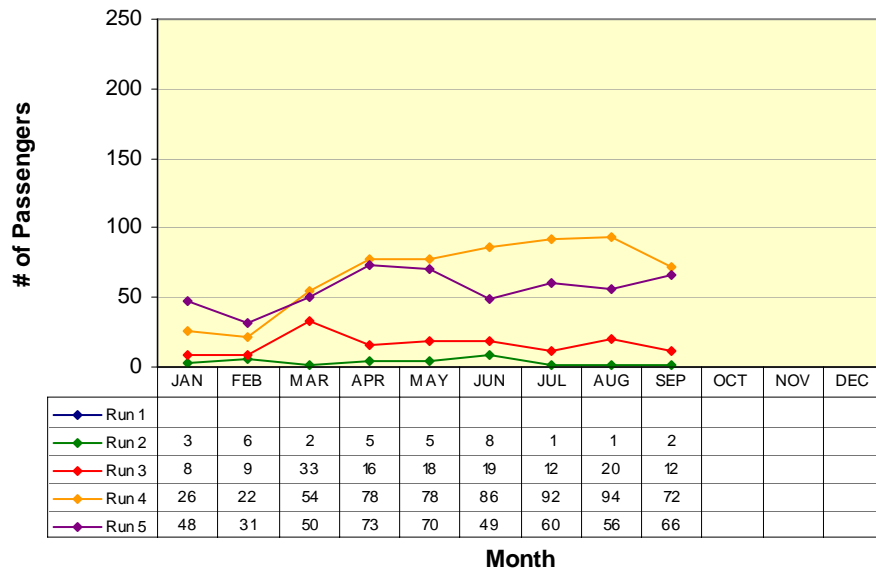
**RUN 1:**  
Community Hall 6:00am  
Govt Center 6:50am

**RUN 2:**  
Community Hall 6:50am  
Govt Center 7:40am

**RUN 3:**  
Community Hall 11:00am  
Govt Center 11:50am

**RUN 4:**  
Community Hall 4:00pm  
Govt Center 4:50pm

## Route 3(E) (San Andreas to West Point)



**RUN 1:**  
Moke Hill STP 5:35am  
Community Hall 6:00am

**RUN 2:**  
Moke Hill STP 6:15am  
Community Hall 6:50am

**RUN 3:**  
Govt Center 10:00am  
Community Hall 10:50am

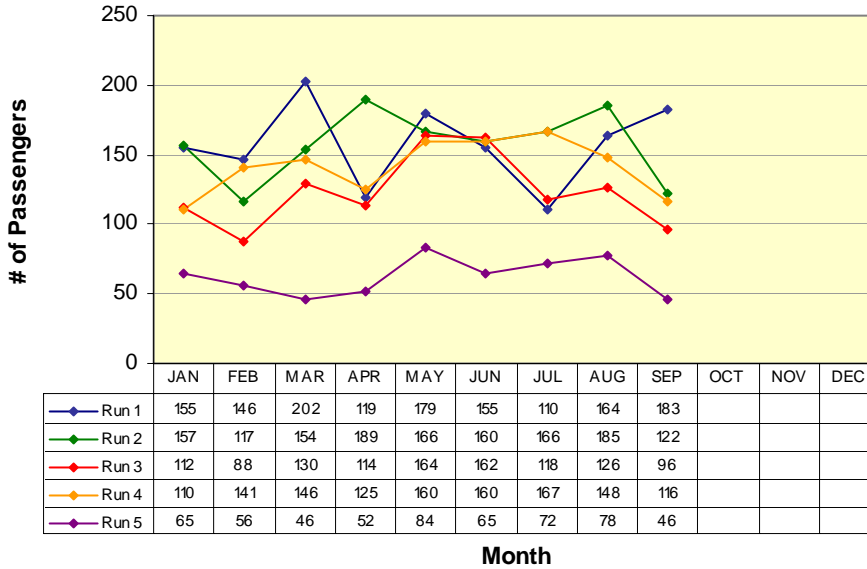
**RUN 4:**  
Govt Center 3:00pm  
Community Hall 3:50pm

**RUN 5:**  
Govt Center 5:20pm  
Community Hall 6:10pm

# ROUTE 4a

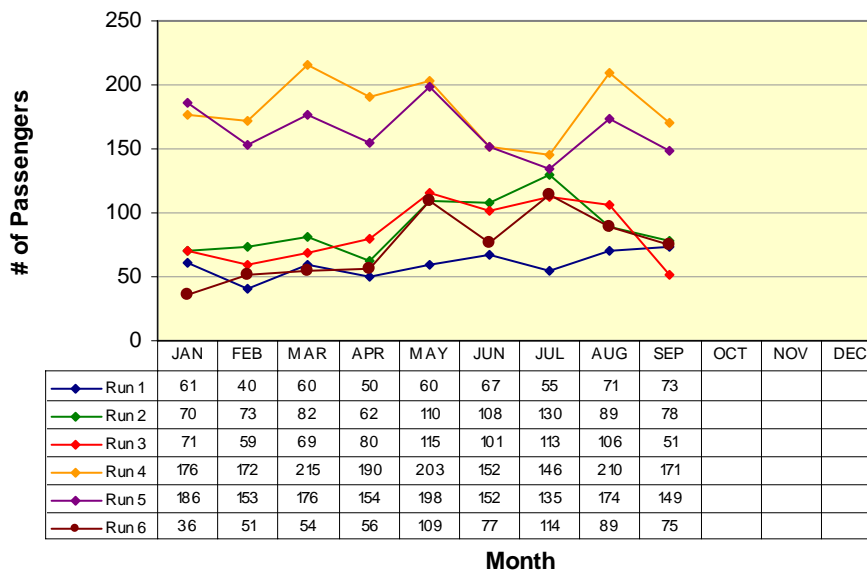
Arnold / Avery / Forest Meadows / Murphys / Angels Camp

## Route 4a(W) (Arnold to Angels Camp)



<b>RUN 1:</b>	
Post Office	6:15am
Save Mart	7:10am
<b>RUN 2:</b>	
Post Office	9:20am
Save Mart	10:00am
<b>RUN 3:</b>	
Post Office	12:35pm
Save Mart	1:13pm
<b>RUN 4:</b>	
Post Office	3:20pm
Save Mart	4:00pm
<b>RUN 5:</b>	
Post Office	6:25pm
Save Mart	7:04pm

## Route 4a(E) (Angels Camp to Arnold)

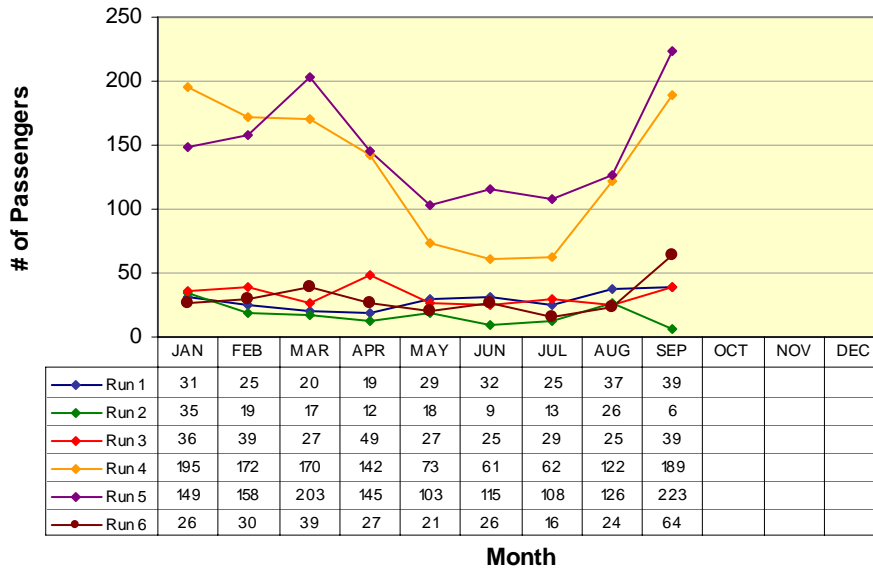


<b>RUN 1:</b>	
Save Mart	5:44am
Post Office	6:15am
<b>RUN 2:</b>	
Save Mart	8:35am
Post Office	9:15am
<b>RUN 3:</b>	
Save Mart	11:25am
Post Office	12:05pm
<b>RUN 4:</b>	
Save Mart	2:37pm
Post Office	3:17pm
<b>RUN 5:</b>	
Save Mart	5:35pm
Post Office	6:15pm
<b>RUN 6:</b>	
Save Mart	9:47pm
Post Office	10:27pm

# Route 4b

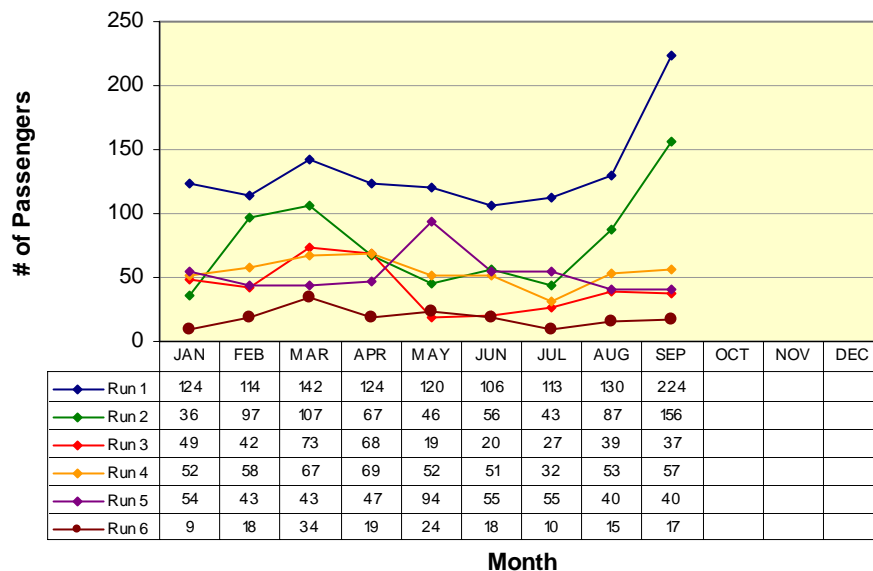
Angels Camp / Calaveras Center / Columbia College

## Route 4b(N) (Columbia College to Angels Camp)



<b>RUN 1:</b>	
Oak Pavilion	7:58am
Save Mart	8:35am
<b>RUN 2:</b>	
Oak Pavilion	10:18am
Save Mart	11:00am
<b>RUN 3:</b>	
Oak Pavilion	10:48am
Save Mart	11:25am
<b>RUN 4:</b>	
Oak Pavilion	2:00pm
Save Mart	2:37pm
<b>RUN 5:</b>	
Oak Pavilion	5:00pm
Save Mart	5:35pm
<b>RUN 6:</b>	
Oak Pavilion	9:10pm
Save Mart	9:47pm

## Route 4b(S) (Angels Camp to Columbia College)

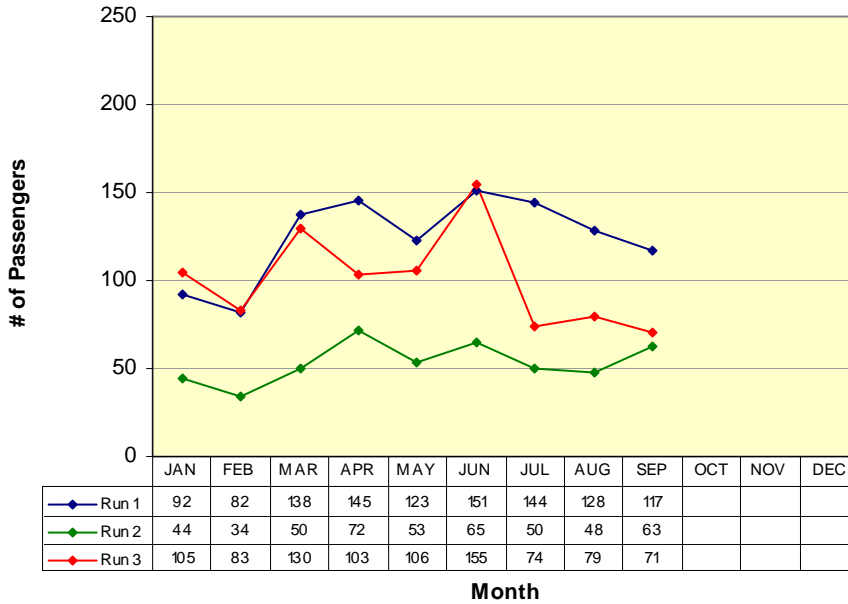


<b>RUN 1:</b>	
Save Mart	7:10am
Oak Pavilion	7:50am
<b>RUN 2:</b>	
Save Mart	9:30am
Oak Pavilion	10:10am
<b>RUN 3:</b>	
Save Mart	10:00am
Oak Pavilion	10:42am
<b>RUN 4:</b>	
Save Mart	1:13pm
Oak Pavilion	1:55pm
<b>RUN 5:</b>	
Save Mart	4:00pm
Oak Pavilion	4:42pm
<b>RUN 6:</b>	
Save Mart	8:20pm
Oak Pavilion	9:02pm

# Lodi

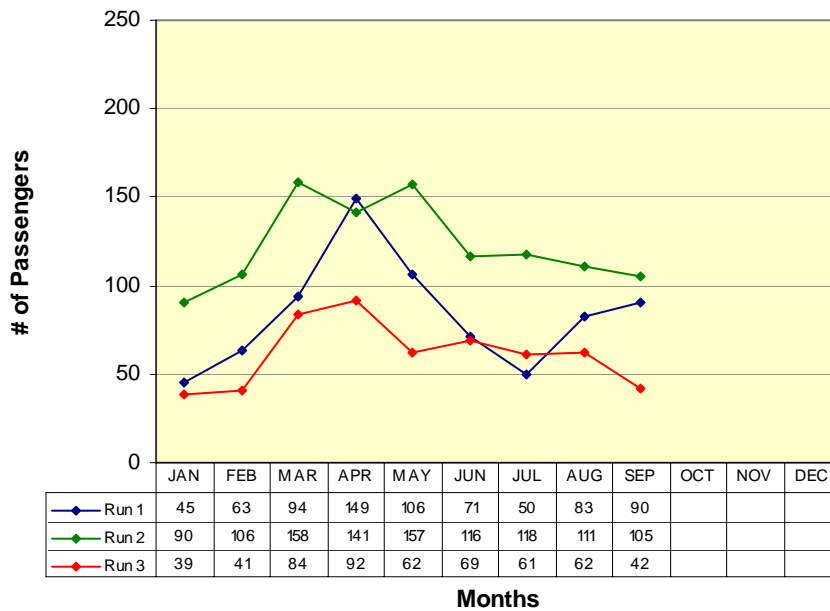
San Andreas / Valley Springs / Wallace / Clements / Lockeford / Victor / Lodi

## San Andreas to Lodi (W)



**RUN 1:**  
Govt Center 9:20am  
Lodi Station 10:15am  
**RUN 2:**  
Govt Center 12:20pm  
Lodi Station 1:15pm  
**RUN 3:**  
Govt Center 4:20pm  
Lodi Station 5:15pm

## Lodi to San Andreas (E)



**RUN 1:**  
Lodi Station 10:30am  
Govt Center 11:38am  
**RUN 2:**  
Lodi Station 1:30pm  
Govt Center 2:40pm  
**RUN 3:**  
Lodi Station 6:00pm  
Govt Center 7:08pm

# VI. Vehicles Report

<i>Vehicle #</i>	<i>End Miles</i>	<i>Miles this Month</i>	<i>Miles YTD</i>	<i>Fuel Mileage</i>	<i>Breakdown Frequency</i>	<i>Repair Costs</i>	<i>Major Components Repaired / Replaced</i>
<b>Bus 48</b>	351413	0	523	0.0	523		OOS
<b>Bus 50</b>	414112	2850	11392	8.9	2,678		
<b>Bus 51</b>	408775	2133	12272	8.9	57,725	\$630.00	Rear pinion seal
<b>Bus 52</b>	300517	672	4946	7.9	0	Pending	Rear end
<b>Bus 53</b>	431093	0	0	0.0	0		OOS
<b>Bus 54</b>	249660	5291	18918	9.5	5,102		
<b>Bus 55</b>	231781	5005	15071	8.9	56,378		
<b>Bus 56</b>	156121	5369	9727	8.3	6,855	Warrenty	EGR Valve
<b>Bus 57</b>	182193	5620	17077	8.8	19,623		
<b>Bus 442</b>	181872	4202	9557	8.8	9,557		

## VII. Service Disruption Summary

DATE	SCHED. TIME	ROUTE	BUS #	LOCATION	REASON	MINUTES DELAYED
9/4	6:15	4	54	Arnold P.O.	Deviations	19
9/4	8:18	2	55	Raleys	Bus switch	21
9/4	8:48	2	55	Govt Center	Catching up from previous	25
9/4	9:10	2	55	Mt Ranch	Catching up from previous	19
9/4	9:23	2	55	Govt Center	Catching up from previous	20
9/4	11:00	2	55	Govt Center	Catching up from previous	20
9/4	13:30	2	55	Govt Center	Bus repair in yard	38
9/4	14:07	2	55	Raleys	Catching up from previous	35
9/4	14:40	1	55	Govt Center	Catching up from previous	36
9/4	15:00	1	55	Save Mart	Catching up from previous	44
9/4	15:20	1	55	Govt Center	Catching up from previous	42
9/4	16:00	1	55	Save Mart	Catching up from previous	23
9/4	16:20	1	55	Govt Center	Catching up from previous	24
9/4	14:37	4	442	Save Mart	Bus repair in yard	22

<b>DATE</b>	<b>SCHED. TIME</b>	<b>ROUTE</b>	<b>BUS #</b>	<b>LOCATION</b>	<b>REASON</b>	<b>MINUTES DELAYED</b>
<b>9/4</b>	<b>15:20</b>	4	442	Arnold P.O.	Catching up & deviations	22
<b>9/4</b>	<b>16:00</b>	4	442	Save Mart	Catching up & deviations	22
<b>9/5</b>	<b>6:15</b>	4	57	Arnold P.O.	Flag downs	16
<b>9/5</b>	<b>10:00</b>	4	57	Save Mart	Deviations	17
<b>9/10</b>	<b>6:15</b>	4	57	Arnold P.O.	Flag downs	18
<b>9/10</b>	<b>15:00</b>	1	54	Save Mart	Deviations	20
<b>9/10</b>	<b>15:20</b>	1	54	Govt Center	Catching up & deviations	20
<b>9/11</b>	<b>6:15</b>	4	57	Arnold P.O.	Flag downs	18
<b>9/12</b>	<b>16:00</b>	1	51	Save Mart	Waiting for transfers	21
<b>9/12</b>	<b>16:20</b>	Lodi	51	Govt Center	Catching up from previous	20
<b>9/12</b>	<b>16:00</b>	4	57	Save Mart	Deviations	24
<b>9/13</b>	<b>6:15</b>	4	56	Arnold P.O.	Flag downs	24
<b>9/14</b>	<b>6:15</b>	4	56	Arnold P.O.	Flag downs	30
<b>9/14</b>	<b>7:10</b>	4	56	Save Mart	Catching up from previous	21

## VII. Service Disruption Summary

DATE	SCHED. TIME	ROUTE	BUS #	LOCATION	REASON	MINUTES DELAYED
9/14	10:00	4	56	Save Mart	Catching up from previous	27
9/14	9:30	4	55	Save Mart	Deviations	16
9/14	11:38	1	57	Govt Center	Wheel chair securement	15
9/14	12:00	1	57	Save Mart	Wheel chair securement	20
9/14	12:20	Lodi	57	Govt Center	Catching up from previous	40
9/14	13:30	Lodi	57	Lodi	Catching up from previous	28
9/14	14:40	1	57	Govt Center	Wheel chair securement	34
9/14	13:00	1	55	Govt Center	Wheel chair securement	21
9/14	15:20	1	54	Govt Center	Deviations	17
9/18	6:15	4	54	Arnold P.O.	Flag downs	22
9/18	16:00	1	55	Save Mart	Waiting for transfers	28
9/18	16:20	Lodi	55	Govt Center	Catching up from previous	26
9/18	15:20	4	54	Arnold P.O.	Deviations	18
9/18	16:00	4	54	Save Mart	Deviations	36

## VII. Service Disruption Summary

DATE	SCHED. TIME	ROUTE	BUS #	LOCATION	REASON	MINUTES DELAYED
9/19	10:00	4	57	Save Mart	Deviations	17
9/19	11:38	1	56	Govt Center	Wheel chair securement	18
9/19	15:00	1	50	Govt Center	Deviations	18
9/19	16:00	1	50	Save Mart	Waiting for transfers	16
9/19	16:00	4	56	Save Mart	Deviations	16
9/20	16:00	1	55	Save Mart	Waiting for transfers	17
9/20	16:20	Lodi	55	Govt Center	Catching up from previous	18
9/20	16:00	4	56	Save Mart	Deviations	18
9/21	16:00	1	50	Save Mart	Waiting for transfers	20
9/21	16:20	Lodi	50	Govt Center	Catching up from previous	20
9/21	16:00	4	56	Save Mart	Deviations	20
9/25	16:00	1	54	Save Mart	Waiting for transfers	28
9/25	16:20	Lodi	54	Govt Center	Catching up from previous	24
9/25	16:00	4	442	Save Mart	Deviations	28

## VII. Service Disruption Summary

DATE	SCHED. TIME	ROUTE	BUS #	LOCATION	REASON	MINUTES DELAYED
9/26	11:38	1	54	Govt Center	Wheel chair securement	16
9/26	16:00	1	50	Save Mart	Waiting for transfers	18
9/26	16:20	Lodi	50	Govt Center	Catching up from previous	19
9/26	16:00	4	56	Save Mart	Deviations	17
9/26	18:25	4	56	Arnold P.O.	Deviations	17
9/27	10:48	4	56	Columbia	Deviations	17
9/27	16:00	1	55	Save Mart	Waiting for transfers	20
9/27	16:20	Lodi	55	Govt Center	Catching up from previous	19
9/27	16:00	4	56	Save Mart	Deviations	27
9/28	15:00	1	56	Govt Center	Deviations and flag downs	22
9/28	15:20	1	56	Save Mart	Catching up from previous	22



## IX. Wheelchair Lift Use

For the month of: September 2007

Date	Vehicle #	Pick up Point	Drop off Point	Pick-up time	Drop-off time	Uses
9/10	54	Save Mart	Govt Center	15:20	15:42	1
9/10	54	Govt Center	Valley Oak	16:35	16:57	1
9/14	57	S. A. Post Office	Senior Center	11:37	11:47	1
9/14	57	Altaville Apts.	Valley Oak	12:17	13:04	1
9/14	55	Senior Center	High School St.	13:17	13:29	1
9/14	57	Valley Oak	Govt Center	14:39	15:10	1
9/14	54	Govt Center	Altaville Apts.	15:38	16:03	1
9/19	57	S. A. Post Office	Senior Center	11:45	11:57	1
9/19	50	Senior Center	High School St.	13:05	13:23	1
9/26	54	S. A. Post Office	Senior Center	11:31	11:51	2
9/26	55	Senior Center	High School St.	13:11	13:27	2