



## Monthly Operations Report



MV Transportation, Inc.

# I. Project Manager's Summary

**From:** Annie Self, Calaveras Transit General Manager  
MV Transportation, Inc.  
750 Industrial Way - P. O. Box 1385  
San Andreas, Ca 95249  
Phone (209) 754-4450  
Fax (209) 754-9086

**To:** Calaveras County  
C/o Nathan Atherstone  
Transit Manager, Public Works  
891 Mountain Ranch Road  
San Andreas, CA 95249

## **On time performance checks:**

On time performance was checked throughout the month of August. On time percentage for service in July was 94%.

On time performance was affected by 2 fires this month which required the closure of 3 Highways.

## **Trends:**

When comparing July and August we found there were 753 more passenger trips in August than in July.

Route 1 had 1,743 passenger trips in July, and had 2,121 passenger trips in August. There was an increase of 378 passenger trips on Route 1 in August.

Route 2 had 694 passenger trips in July and 730 passenger trips in August. There was an increase of 36 passenger trips on Route 2 in August.

Route 3 had 270 passenger trips in July and 290 passenger trips in August. There was an increase of 20 passenger trips on Route 3 in August.

Route 4 had 1,859 passenger trips in July and 2,164 passenger trips in August. There was an increase of 305 passenger trips on Route 4 in August.

The Lodi route had 497 passenger trips in July and 511 passenger trips in August. There was an increase of 14 passenger trips on The Lodi Route in August.

The Bear Valley Music Festival bus had 35 passenger trips in the month of August.

## **Comments/Compliments/Complaints:**

We received 1 compliment in the month of August.

**Safety and Training:**

The Safety Meetings for the month of August were held on Wednesday August 15, 2007. The main focuses of these meetings were Blood Borne Pathogens.

There were no preventable or non preventable incidents involving Calaveras Transit buses, or Employees during the month of August.

**Overview:**

August 12<sup>th</sup> was the closing of the Bear Valley Music Festival. We ran the shuttle service for 5 days and transported 35 people.

We are happy to announce the hiring of Robert Bachich as our Maintenance Manager. He comes to us with many skills and we all look forward to working with him.

# II. Billing Summary

P.O. Box 39000, Dept. 33135  
 San Francisco, CA 94139-3135

## INVOICE

Customer	
Number: 5901	Name: County of Calaveras
Address: 891 Mountain Ranch Rd.	
City: San Andreas	State: CA ZIP: 95249
Contact: Nathan Atherstone Transit and Transportation Planner	

Terms	9/4/2007
Due Date	NET 30
	10/4/2007

Qty	Description	Account code	Unit Price	TOTAL
1	<b>Fixed Fee August 2007</b>	4080	\$21,056.67	\$21,056.67
1130.15	<b>Variable August 2007</b>	4080	\$38.41	\$43,409.06
	Subtotal			
32.67	<b>Bear Valley Music Festival</b>	4080	\$38.41	\$1,254.85
	Subtotal			\$65,720.59
1162.82	Hours Sub Total			
1	Progress Payment 15th of the Month	4080	(\$30,217.24)	-\$30,217.24
	SubTotal			\$35,503.34
	<b>TOTAL</b>			<b>\$35,503.34</b>



# III. Deposit Summary

## Current Month Deposit Summary

Date	Collection Period	Tickets	DAR	Fixed Rt	Special	Total
8/7	8/1 - 8/4, 8/6	\$1,353.00		\$897.00		\$2,250.00
8/8	8/7	\$17.50		\$122.50		\$140.00
8/13	8/8 - 8/12	\$45.00		\$525.50		\$570.50
8/14	8/13	\$122.50		\$146.00		\$268.50
8/15	8/14	\$20.00		\$135.00		\$155.00
8/16	8/15	\$385.00		\$108.50		\$493.50
8/17	8/16	\$0.00		\$147.50		\$147.50
8/20	8/17	\$7.50		\$112.00		\$119.50
8/21	8/20	\$109.00		\$120.00		\$229.00
8/22	8/21	\$7.50		\$108.00		\$115.50
8/23	8/22	\$19.50		\$126.00		\$145.50
8/27	8/23 - 8/24	\$2.50		\$232.00		\$234.50
8/28	8/27	\$10.00		\$137.50		\$147.50
8/29	8/28	\$330.50		\$133.50		\$464.00
8/30	8/29	\$12.50		\$128.00		\$140.50
9/5	8/30 - 8/31	\$77.50		\$276.00		\$353.50
		\$2,519.50	\$0.00	\$3,455.00	\$0.00	\$5,974.50

**Notes:**

September 5th deposit for August vault count

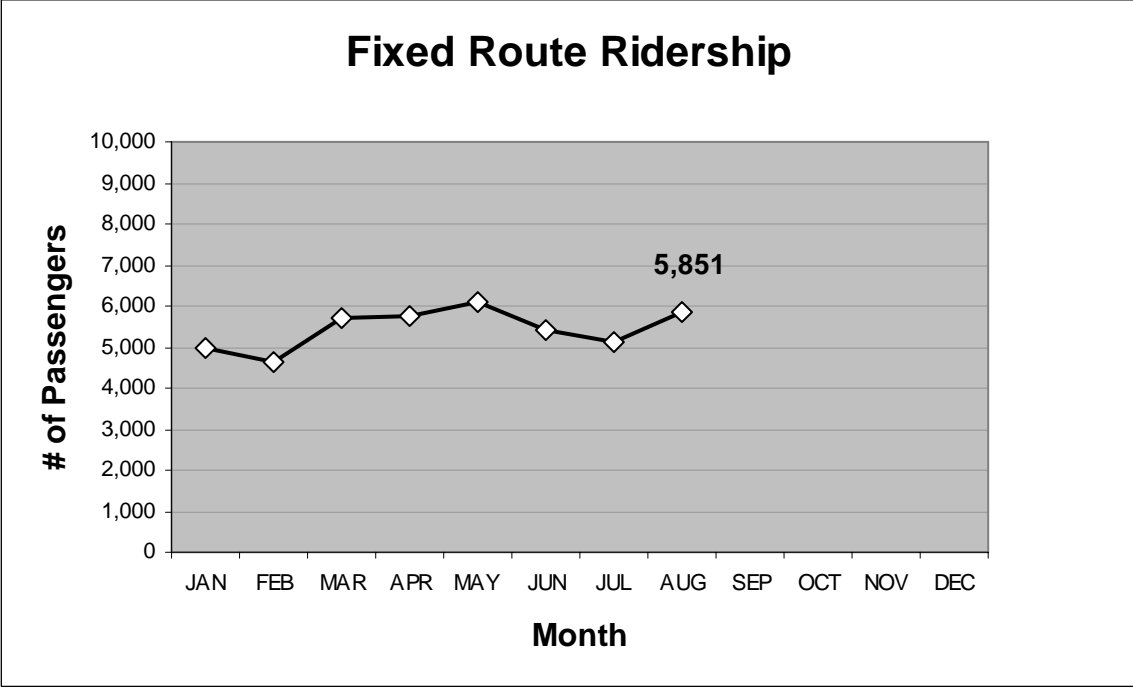
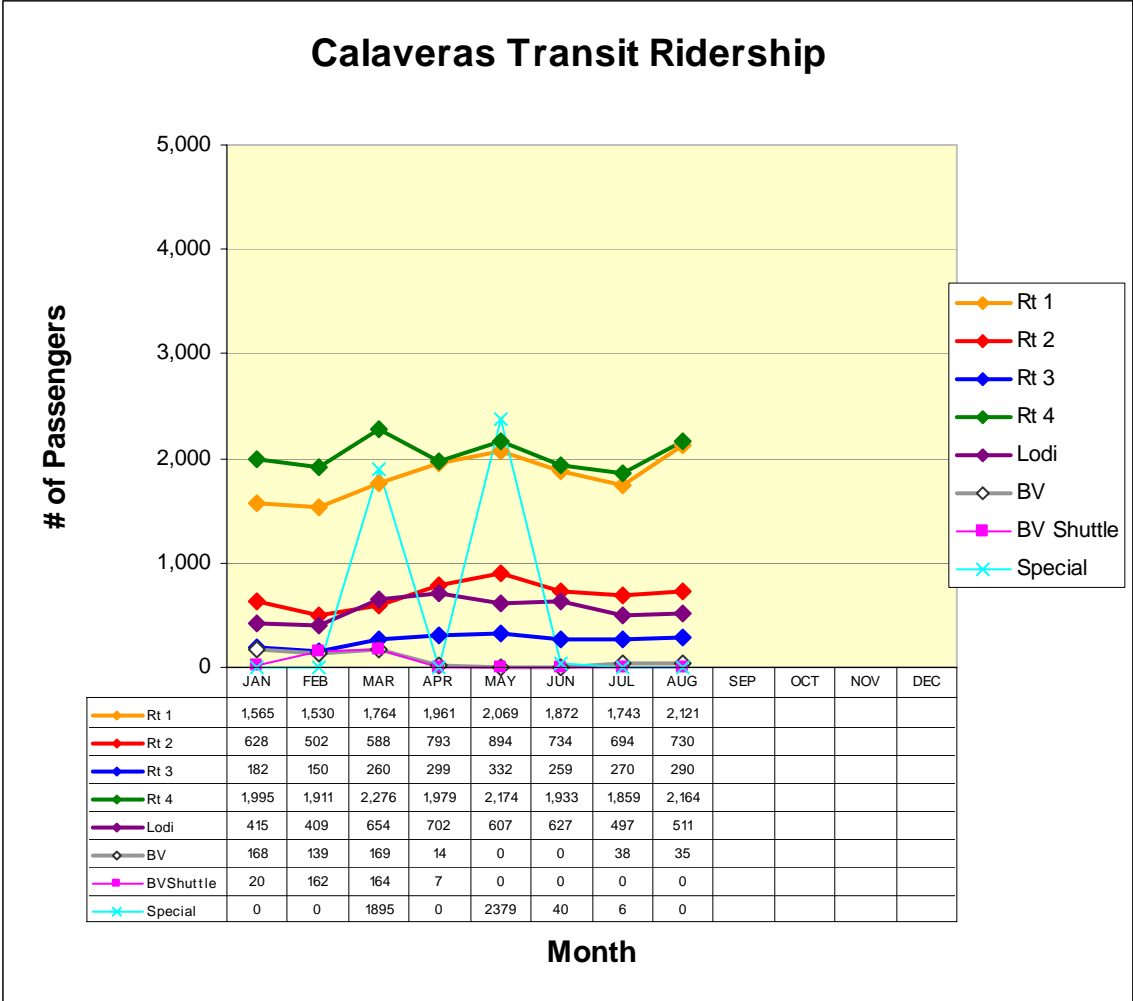
Matches county deposit records?

## IV. Current Month Operational Statistics

	Fixed Rt.	Lodi	Special	Bear Valley	BV Shuttle	Total
Ridership	5305	511	0	35	0	5,851
Vehicle Hours	1158.58	168.38	0.00	35.17	0.00	1,362.13
Vehicle Service Hours	970.57	159.58	0.00	32.67	0.00	1,162.82
Operating Days	23	23	0	5	0	31
Vehicle Service Miles	27,299	5,175	0	590	0	33,064

	Rt 1	Rt 2	Rt 3	Rt 4	LODI	All
Cash Regular	529	182	93	872	233	1,909
Cash Discount	307	100	49	463	84	1,003
Pass Regular	87	12	1	30	6	136
Pass Discount	184	126	56	175	80	621
Ticket Regular	144	103	36	57	31	371
Ticket Discount	163	44	13	186	20	426
Transfer	524	87	15	289	40	955
Promo	0	0	0	0	0	0
Free	127	18	3	32	12	192
Day Pass	56	58	24	60	5	203
Total Passenger #	2,121	730	290	2,164	511	5,816

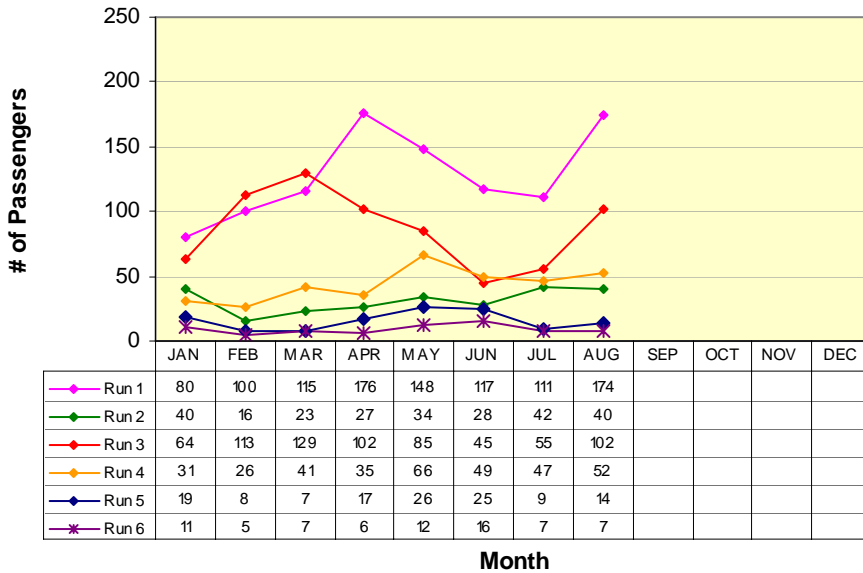
# V. Ridership Trends



# ROUTE 1a

Rancho Calaveras / Valley Springs / San Andreas

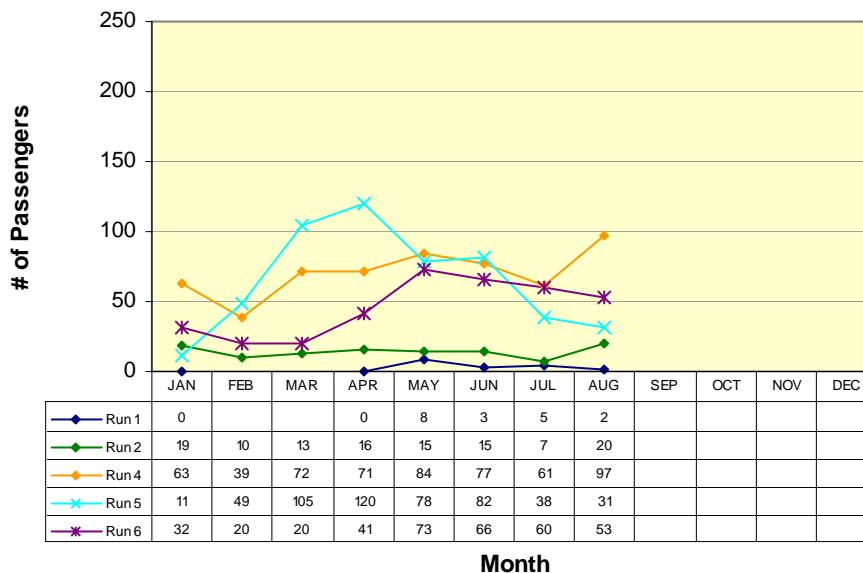
## Route 1a(E) (Rancho Calaveras to San Andreas\*)



- RUN 1:**  
La Contenta (S) 7:00am  
Govt Center 7:40am
- RUN 2:**  
Valley Oak Center 7:57am  
Govt Center 8:16am
- RUN 3:**  
La Contenta (N) 8:22am  
Govt Center 9:11am
- RUN 4:**  
La Contenta (N) 11:54am  
Govt Center 12:19pm
- RUN 5:**  
Valley Oak Center 5:00pm  
Govt Center 5:20pm
- RUN 6:**  
La Contenta (N) 5:49pm  
Govt Center 6:14pm

\*Does not include Lodi Service runs

## Route 1a(W) (Government Center to Rancho Calaveras\*)



- RUN 1: (#)**  
Govt Center 6:40am  
La Contenta (S) 7:00am
- RUN 2:**  
Govt Center 7:40am  
Valley Oak Center 7:56am
- RUN 3: (X)**  
Govt Center 3:45pm  
Valley Oak Center 5:00pm
- RUN 4:**  
Govt Center 11:20am  
La Contenta (N) 11:54am
- RUN 5:**  
Govt Center 1:00pm  
Valley Oak Center 1:17pm
- RUN 6:**  
Govt Center 5:15pm  
La Contenta (N) 5:49pm

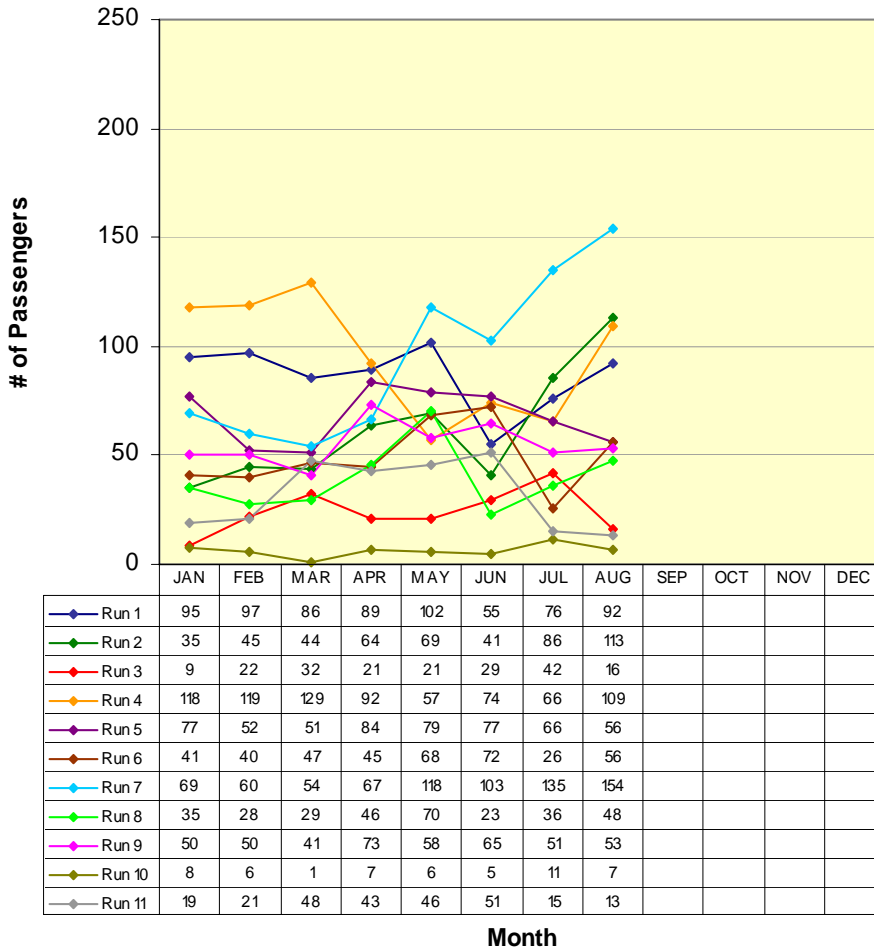
(#) New run started 4/25/07  
(X) Former Milton Run

\* Does not include Lodi Service runs

# ROUTE 1b

San Andreas / Angels Camp

## Route 1b(S) (San Andreas to Angels Camp)



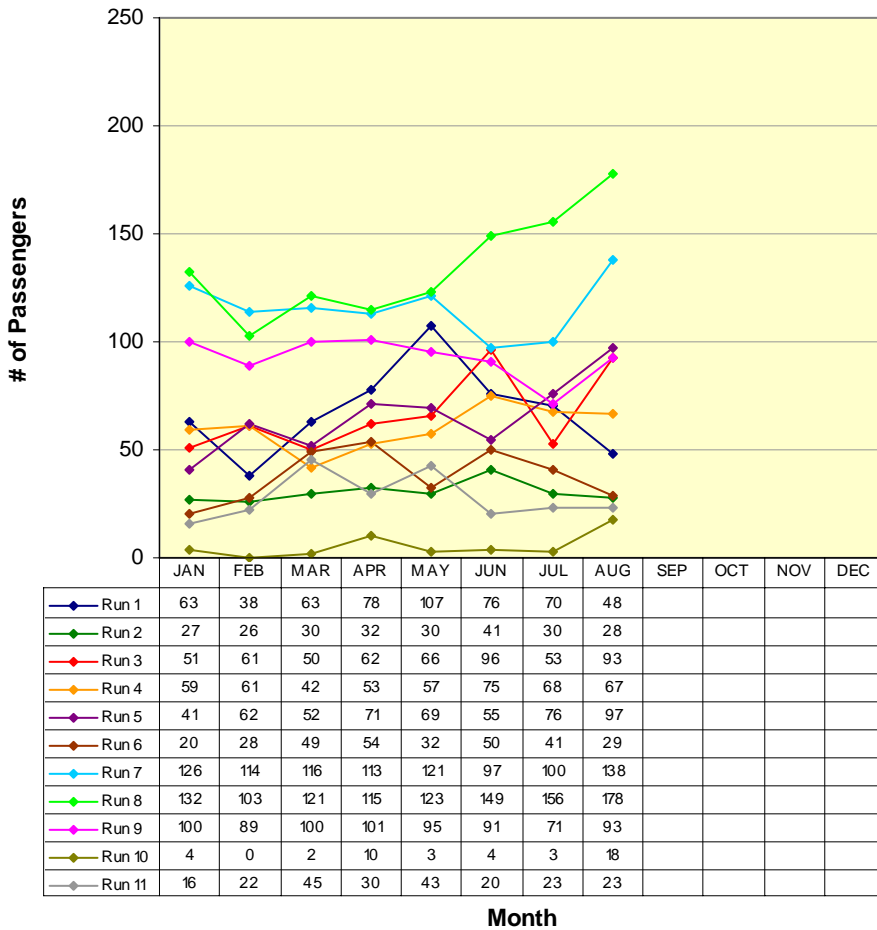
<b>RUN 1:</b>	S.A. Post Office	6:45am
	Visitor's Center	7:10am
<b>RUN 2:</b>	Govt Center	7:40am
	Visitor's Center	8:00am
<b>RUN 3:</b>	Govt Center	8:16am
	Visitor's Center	8:34am
<b>RUN 4:</b>	Govt Center	9:11am
	Visitor's Center	9:30am
<b>RUN 5:</b>	Govt Center	11:38am
	Visitor's Center	12:00pm
<b>RUN 6:</b>	Govt Center	12:19pm
	Visitor's Center	12:40pm
<b>RUN 7:</b>	Govt Center	2:40pm
	Visitor's Center	3:00pm
<b>RUN 8:</b>	Govt Center	3:20pm
	Visitor's Center	4:00pm
<b>RUN 9:</b>	Govt Center	5:15pm
	Visitor's Center	5:35pm
<b>RUN 10:</b>	Govt Center	6:14pm
	Visitor's Center	6:35pm
<b>RUN 11:</b>	Govt Center	7:08pm
	Visitor's Center	7:30pm

*\*Not all runs end in same location*

# ROUTE 1b

San Andreas / Angels Camp

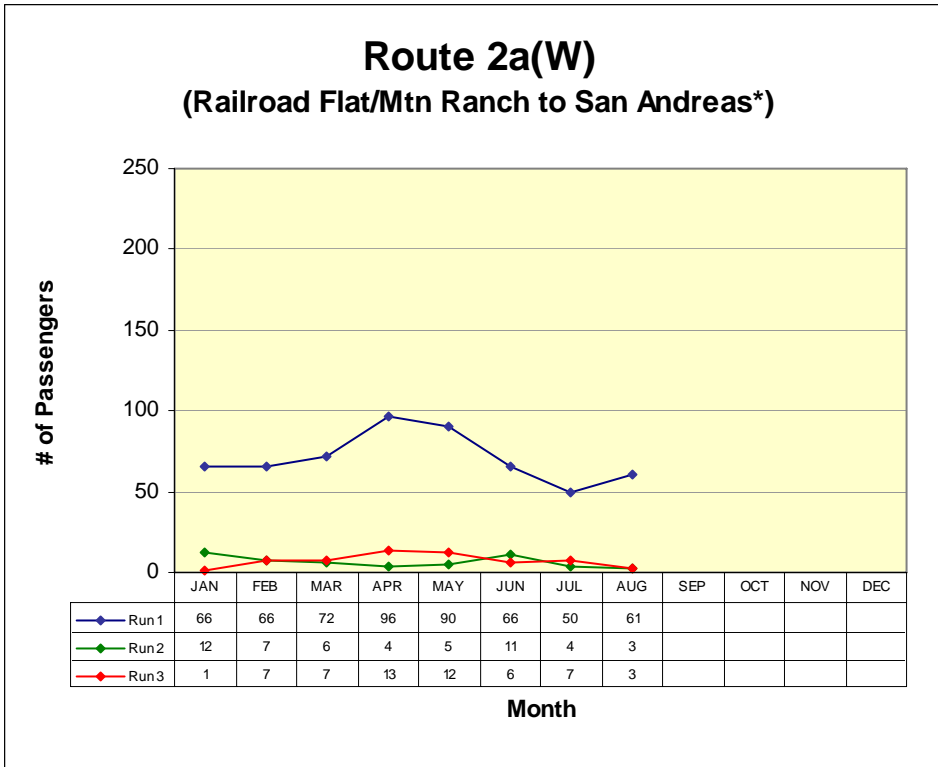
## Route 1b(N) (Angels Camp to San Andreas)



<b>RUN 1:</b>	
Save Mart	7:10am
Govt Center	7:40am
<b>RUN 2:</b>	
Save Mart	8:00am
H.S. St. / Hwy. 49	8:24am
<b>RUN 3:</b>	
Save Mart	9:00am
Govt Center	9:20am
<b>RUN 4:</b>	
Save Mart	11:00am
Govt Center	11:20am
<b>RUN 5:</b>	
Save Mart	12:00pm
Govt Center	12:20pm
<b>RUN 6:</b>	
Save Mart	12:40pm
Govt Center	1:00pm
<b>RUN 7:</b>	
Save Mart	3:00pm
Govt Center	3:20pm
<b>RUN 8:</b>	
Save Mart	4:00pm
Govt Center	4:20pm
<b>RUN 9:</b>	
Save Mart	5:35pm
H.S. St. / Hwy. 49	5:59pm
<b>RUN 10:</b>	
Save Mart	6:35pm
H.S. St. / Hwy. 49	6:59pm
<b>RUN 11:</b>	
Save Mart	7:30pm
H.S. St. / Hwy. 49	7:54pm

# ROUTE 2a

Railroad Flat / Mountain Ranch / San Andreas

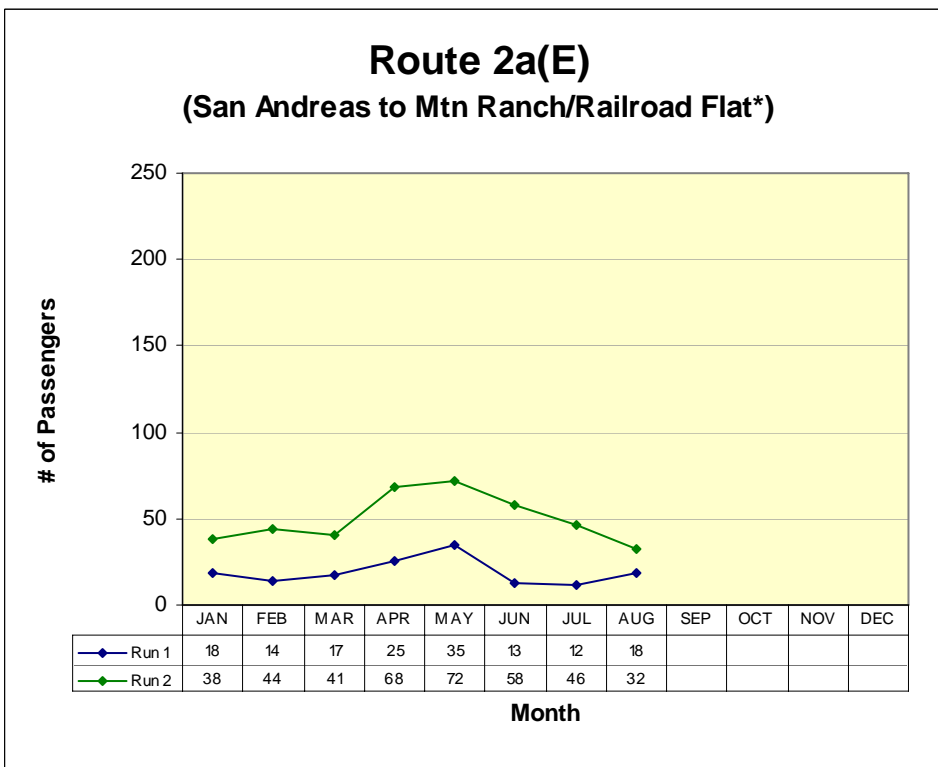


**RUN 1:**  
Community Center 7:00am  
Govt Center 7:40am

**RUN 2:**  
Blunder Inn 9:10am  
Govt Center 9:23am

**RUN 3:**  
Community Center 6:30pm  
Govt Center 7:00pm

*\*Not all runs begin in same location*



**RUN 1:**  
Govt Center 8:48am  
Blunder Inn 9:01am

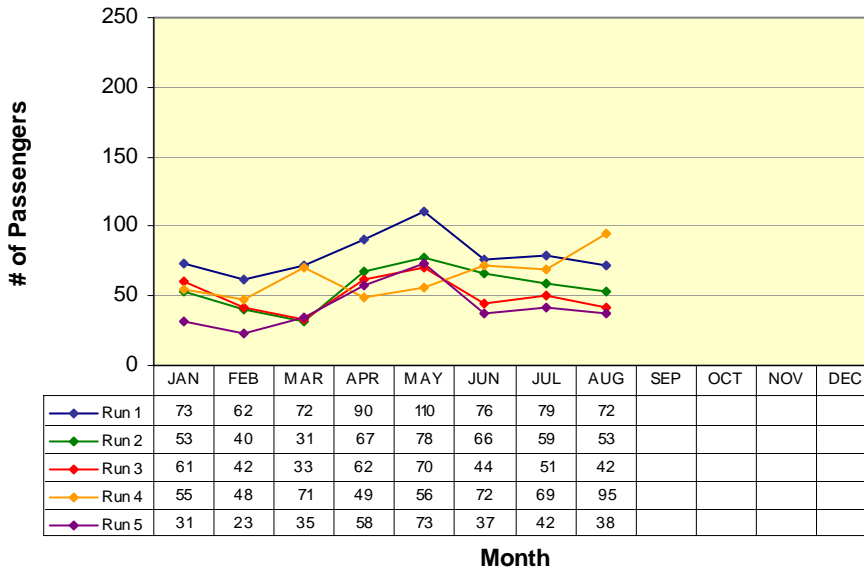
**RUN 2:**  
Govt Center 5:55pm  
Community Hall 6:30pm

*\*Not all runs end in same location*

# ROUTE 2b

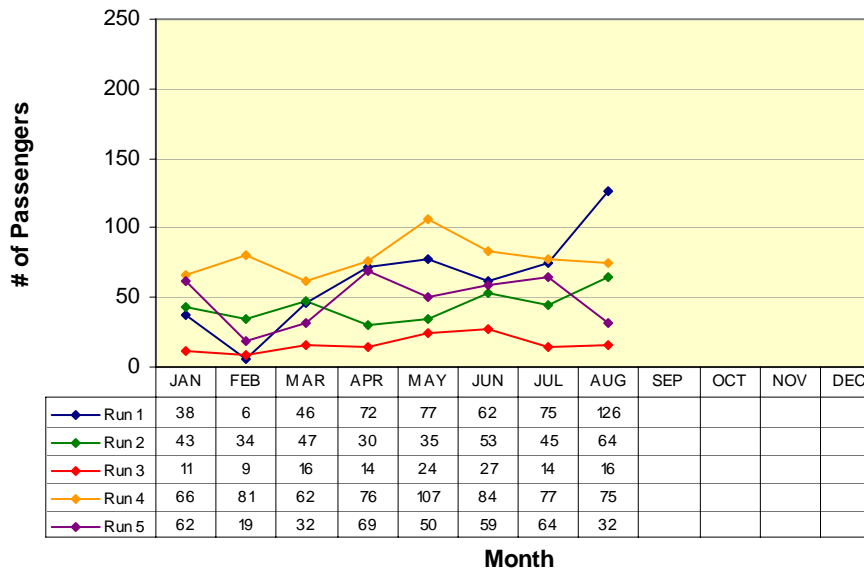
San Andreas / Mokelumne Hill / Jackson

## Route 2b(N) (San Andreas to Jackson)



<b>RUN 1:</b>	
Govt Center	7:40am
Raley's	8:13am
<b>RUN 2:</b>	
Govt Center	9:23am
Raley's	9:53am
<b>RUN 3:</b>	
Govt Center	11:00am
Raley's	11:33am
<b>RUN 4:</b>	
Govt Center	1:30pm
Raley's	2:03pm
<b>RUN 5:</b>	
Govt Center	4:10pm
Raley's	4:44pm

## Route 2b(S) (Jackson to San Andreas)

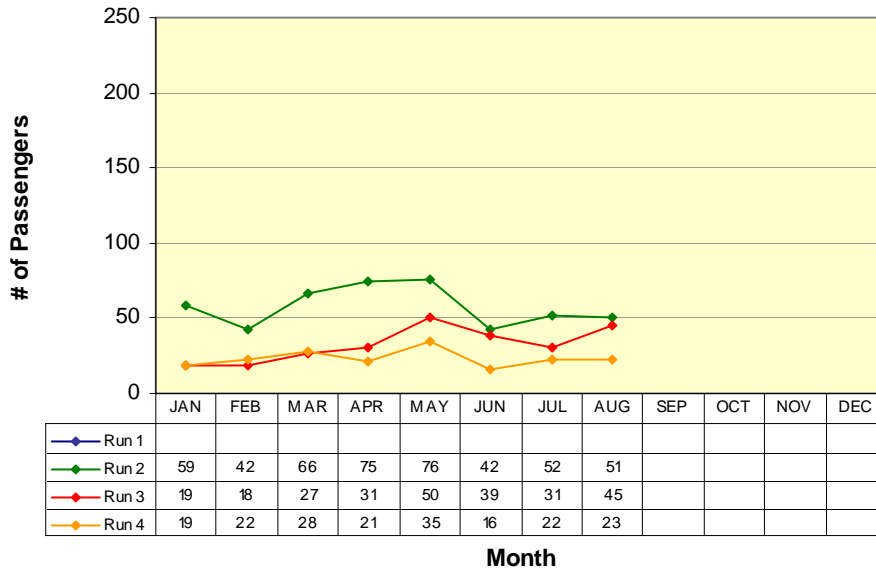


<b>RUN 1:</b>	
Raley's	8:18am
Govt Center	8:48am
<b>RUN 2:</b>	
Raley's	10:23am
Govt Center	10:53am
<b>RUN 3:</b>	
Raley's	11:40am
Govt Center	12:10pm
<b>RUN 4:</b>	
Raley's	2:07pm
Govt Center	3:00pm
<b>RUN 5:</b>	
Raley's	5:07pm
Govt Center	5:45pm

# ROUTE 3

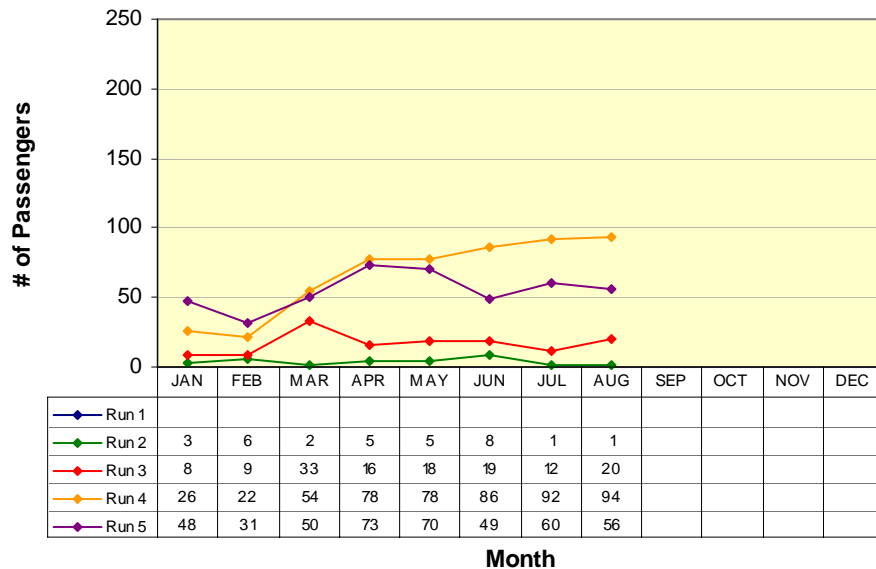
West Point / Glencoe / Mokelumne Hill / San Andreas

## Route 3(W) (West Point to San Andreas)



**RUN 1:**  
Community Hall 6:00am  
Govt Center 6:50am  
**RUN 2:**  
Community Hall 6:50am  
Govt Center 7:40am  
**RUN 3:**  
Community Hall 11:00am  
Govt Center 11:50am  
**RUN 4:**  
Community Hall 4:00pm  
Govt Center 4:50pm

## Route 3(E) (San Andreas to West Point)

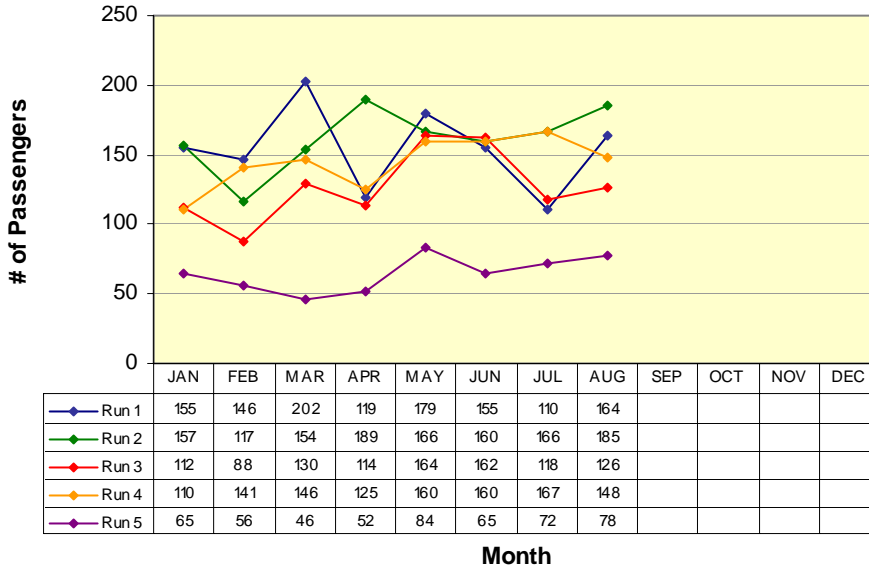


**RUN 1:**  
Moke Hill STP 5:35am  
Community Hall 6:00am  
**RUN 2:**  
Moke Hill STP 6:15am  
Community Hall 6:50am  
**RUN 3:**  
Govt Center 10:00am  
Community Hall 10:50am  
**RUN 4:**  
Govt Center 3:00pm  
Community Hall 3:50pm  
**RUN 5:**  
Govt Center 5:20pm  
Community Hall 6:10pm

# ROUTE 4a

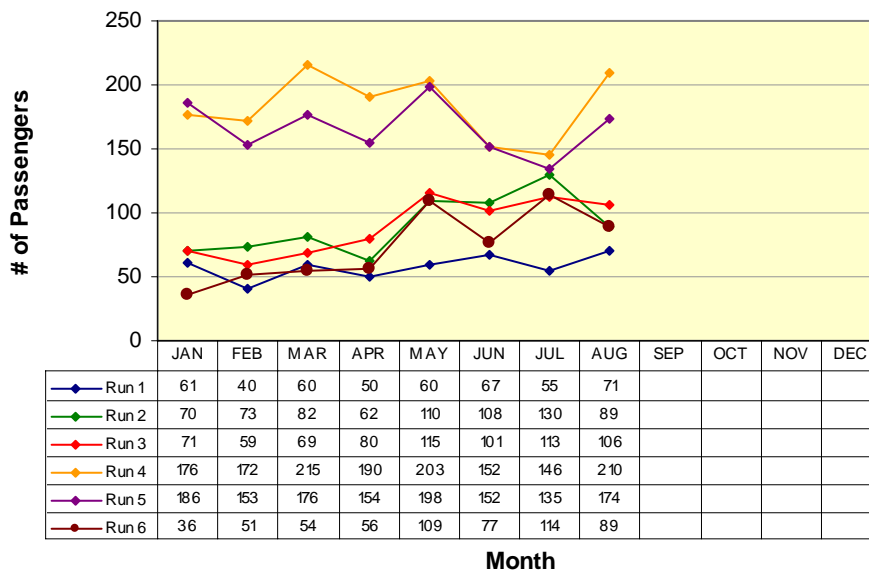
Arnold / Avery / Forest Meadows / Murphys / Angels Camp

## Route 4a(W) (Arnold to Angels Camp)



<b>RUN 1:</b>	
Post Office	6:15am
Save Mart	7:10am
<b>RUN 2:</b>	
Post Office	9:20am
Save Mart	10:00am
<b>RUN 3:</b>	
Post Office	12:35pm
Save Mart	1:13pm
<b>RUN 4:</b>	
Post Office	3:20pm
Save Mart	4:00pm
<b>RUN 5:</b>	
Post Office	6:25pm
Save Mart	7:04pm

## Route 4a(E) (Angels Camp to Arnold)

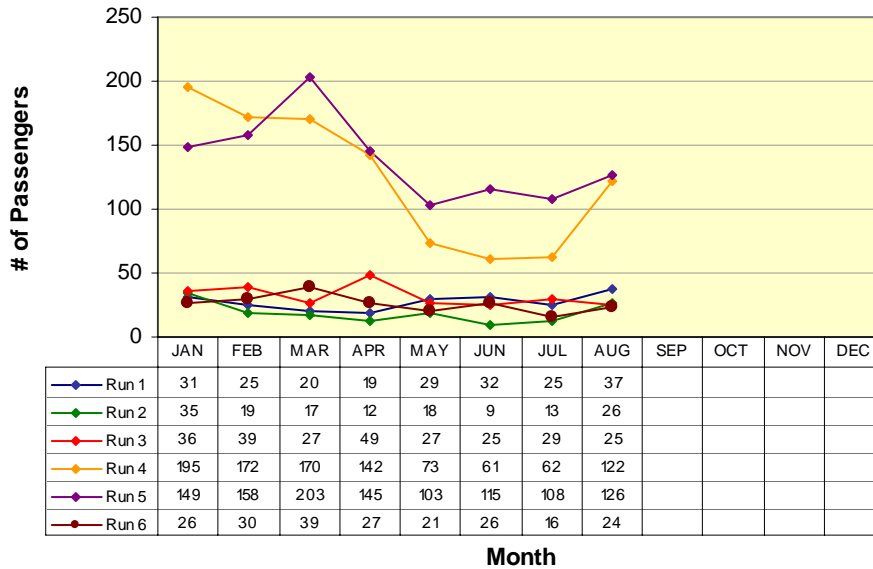


<b>RUN 1:</b>	
Save Mart	5:44am
Post Office	6:15am
<b>RUN 2:</b>	
Save Mart	8:35am
Post Office	9:15am
<b>RUN 3:</b>	
Save Mart	11:25am
Post Office	12:05pm
<b>RUN 4:</b>	
Save Mart	2:37pm
Post Office	3:17pm
<b>RUN 5:</b>	
Save Mart	5:35pm
Post Office	6:15pm
<b>RUN 6:</b>	
Save Mart	9:47pm
Post Office	10:27pm

# Route 4b

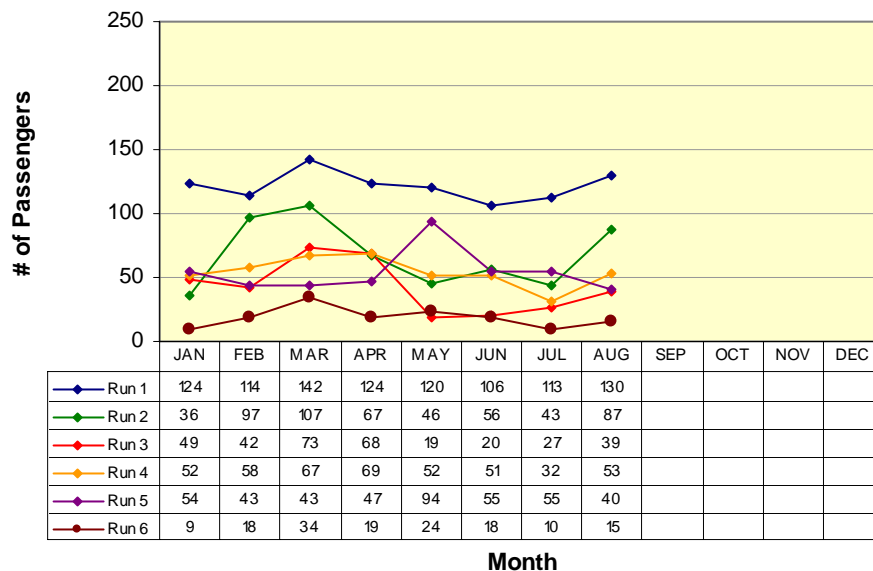
Angels Camp / Calaveras Center / Columbia College

## Route 4b(N) (Columbia College to Angels Camp)



<b>RUN 1:</b>	
Oak Pavilion	7:58am
Save Mart	8:35am
<b>RUN 2:</b>	
Oak Pavilion	10:18am
Save Mart	11:00am
<b>RUN 3:</b>	
Oak Pavilion	10:48am
Save Mart	11:25am
<b>RUN 4:</b>	
Oak Pavilion	2:00pm
Save Mart	2:37pm
<b>RUN 5:</b>	
Oak Pavilion	5:00pm
Save Mart	5:35pm
<b>RUN 6:</b>	
Oak Pavilion	9:10pm
Save Mart	9:47pm

## Route 4b(S) (Angels Camp to Columbia College)

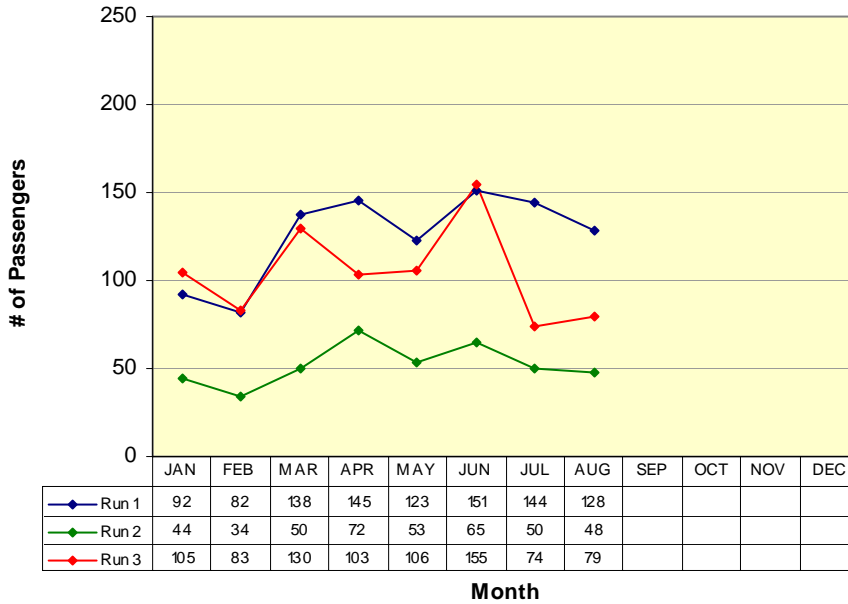


<b>RUN 1:</b>	
Save Mart	7:10am
Oak Pavilion	7:50am
<b>RUN 2:</b>	
Save Mart	9:30am
Oak Pavilion	10:10am
<b>RUN 3:</b>	
Save Mart	10:00am
Oak Pavilion	10:42am
<b>RUN 4:</b>	
Save Mart	1:13pm
Oak Pavilion	1:55pm
<b>RUN 5:</b>	
Save Mart	4:00pm
Oak Pavilion	4:42pm
<b>RUN 6:</b>	
Save Mart	8:20pm
Oak Pavilion	9:02pm

# Lodi

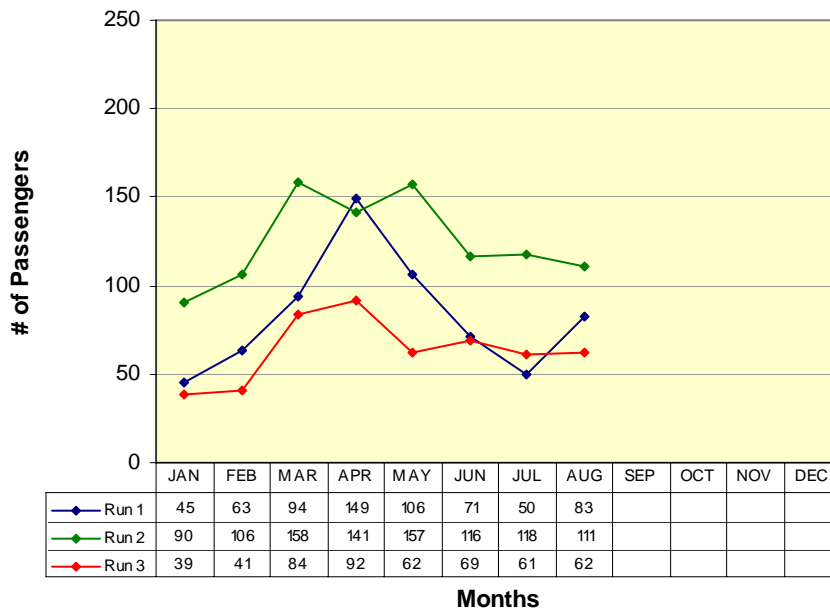
San Andreas / Valley Springs / Wallace / Clements / Lockeford / Victor / Lodi

## San Andreas to Lodi (W)



**RUN 1:**  
Govt Center 9:20am  
Lodi Station 10:15am  
**RUN 2:**  
Govt Center 12:20pm  
Lodi Station 1:15pm  
**RUN 3:**  
Govt Center 4:20pm  
Lodi Station 5:15pm

## Lodi to San Andreas (E)



**RUN 1:**  
Lodi Station 10:30am  
Govt Center 11:38am  
**RUN 2:**  
Lodi Station 1:30pm  
Govt Center 2:40pm  
**RUN 3:**  
Lodi Station 6:00pm  
Govt Center 7:08pm

# VI. Vehicles Report

<i>Vehicle #</i>	<i>End Miles</i>	<i>Miles this Month</i>	<i>Miles YTD</i>	<i>Fuel Mileage</i>	<i>Breakdown Frequency</i>	<i>Repair Costs</i>	<i>Major Components Repaired / Replaced</i>
<b>Bus 48</b>	351413	0	523	0.0	523		OOS
<b>Bus 50</b>	411262	4940	8542	8.5	3,994		
<b>Bus 51</b>	406642	5911	10139	8.9	55,592		
<b>Bus 52</b>	299845	510	4274	5.5	510	Warranty	Transmission
<b>Bus 53</b>	431093	0	0	0.0	0		OOS
<b>Bus 54</b>	244369	6828	13627	9.3	20,581		
<b>Bus 55</b>	226776	5810	10066	7.8	51,373		
<b>Bus 56</b>	150752	1486	4358	6.2	1,486		
<b>Bus 57</b>	176573	7211	11457	8.7	14,003		
<b>Bus 442</b>	177670	5355	5355	8.9	5,355		

## VII. Service Disruption Summary

DATE	SCHED. TIME	ROUTE	BUS #	LOCATION	REASON	MINUTES DELAYED
8/1	5:44	4	57	SaveMart	Bus Late	16
8/1	6:15	4	57	Arnold P.O.	Bus Late	21
8/1	10:30	Lodi	54	Lodi	Construction	20
8/1	11:38	Lodi	54	Govt Center	Construction	30
8/1	12:00	1	54	SaveMart	Construction	40
8/1	11:54	1	55	LaContenta	Construction	17
8/1	12:19	1	55	Govt Center	Construction	17
8/1	13:17	1	55	Valley Oak	Construction	17
8/1	16:00	1	51	SaveMart	Waiting for transfers	20
8/1	15:20	4	57	Arnold P.O.	Deviations	17
8/1	16:00	4	57	SaveMart	Deviations	21
8/2	6:15	4	54	Arnold P.O.	Bus Late	17
8/2	16:00	1	51	SaveMart	Waiting for transfers	24
8/2	16:20	Lodi	51	Govt Center	Bus Late	20

<b>DATE</b>	<b>SCHED. TIME</b>	<b>ROUTE</b>	<b>BUS #</b>	<b>LOCATION</b>	<b>REASON</b>	<b>MINUTES DELAYED</b>
<b>8/2</b>	<b>16:00</b>	4	50	SaveMart	Deviations	24
<b>8/3</b>	<b>6:15</b>	4	57	Arnold P.O.	Bus late	18
<b>8/3</b>	<b>10:00</b>	4	57	SaveMart	Bus late	16
<b>8/3</b>	<b>12:05</b>	4	57	Arnold P.O.	Bus late	18
<b>8/3</b>	<b>12:35</b>	4	57	Arnold P.O.	Bus late	18
<b>8/3</b>	<b>16:00</b>	1	55	SaveMart	Waiting for transfers	18
<b>8/3</b>	<b>16:20</b>	1	55	Govt Center	Bus late	20
<b>8/3</b>	<b>16:00</b>	4	57	SaveMart	Deviations	19
<b>8/6</b>	<b>17:15</b>	1	51	Govt Center	Bus switch out	24
<b>8/6</b>	<b>17:49</b>	1	51	LaContenta	Bus late	28
<b>8/6</b>	<b>10:23</b>	2	442	Raleys	Bus breakdown	47
<b>8/6</b>	<b>11:00</b>	2	442	Govt Center	Late due to breakdown	39
<b>8/6</b>	<b>11:40</b>	2	442	Raleys	Late due to breakdown	35
<b>8/6</b>	<b>12:00</b>	1	57	SaveMart	Bus late	18

## VII. Service Disruption Summary

DATE	SCHED. TIME	ROUTE	BUS #	LOCATION	REASON	MINUTES DELAYED
8/6	12:20	Lodi	57	Govt Center	Bus late	17
8/7	6:15	4	57	Arnold P.O.	Bus late	18
8/7	6:40	1	51	Office	Screw in tire - repaired	18
8/7	7:00	1	51	LaContenta	Late due to repair	16
8/7	16:00	1	51	SaveMart	Waiting for transfers	16
8/7	16:00	4	57	SaveMart	Deviations	18
8/8	6:15	4	51	Arnold P.O.	Bus late	16
8/8	17:15	1	51	Govt Center	Mechanical difficulties	56
8/8	17:49	1	51	LaContenta	Mechanical difficulties	54
8/8	18:14	1	51	Govt Center	Mechanical difficulties	53
8/9	6:15	4	442	Arnold P.O.	Bus late	24
8/9	11:20	1	56	Govt Center	Bus late	22
8/9	11:54	1	56	LaContenta	Bus late	18
8/9	12:19	1	56	Govt Center	Bus late	16

## VII. Service Disruption Summary

DATE	SCHED. TIME	ROUTE	BUS #	LOCATION	REASON	MINUTES DELAYED
8/9	16:00	1	51	SaveMart	Waiting for transfers	20
8/9	16:20	Lodi	51	Govt Center	Bus late	20
8/9	15:20	4	56 / 57	Arnold P.O.	# 56 broke down - traded	69
8/9	16:00	4	57	SaveMart	Bus late	75
8/9	17:00	4	57	Columbia	Bus late	48
8/9	17:35	4	57	SaveMart	Bus late	56
8/9	18:25	4	57	Arnold P.O.	Bus late	48
8/9	19:09	4	57	SaveMart	Bus late	42
8/10	6:15	4	57	Arnold P.O.	Bus late	21
8/10	16:00	1	55	SaveMart	Waiting for transfers	20
8/10	16:20	Lodi	55	Govt Center	Bus late	18
8/10	15:20	4	57	Arnold P.O.	Late due to bus switch	17
8/10	16:00	4	57	SaveMart	Late due to deviations	20
8/13	17:49	1	57	SaveMart	Blocked by emergency vehicles	16

## VII. Service Disruption Summary

DATE	SCHED. TIME	ROUTE	BUS #	LOCATION	REASON	MINUTES DELAYED
8/13	18:25	4	51	Arnold P.O.	Highway closed due to fire	36
8/14	6:15	4	54	Arnold P.O.	Bus late	16
8/14	9:30	4	55	SaveMart	Loading passengers	25
8/14	11:00	1	55	SaveMart	Loading passengers	19
8/14	11:20	1	55	Govt Center	Bus late	20
8/14	11:54	1	55	LaContenta	Bus late	20
8/14	13:00	1	55	Govt Center	Bus late	20
8/15	17:49	1	442	LaContenta	Bus late	16
8/16	17:49	1	51	LaContenta	Highway closed due to fire	22
8/16	18:14	1	51	Govt Center	Bus late	19
8/16	17:20	3	54	Govt Center	Highway closed due to fire - West Point alternate route	90
8/16	16:00	4	57	SaveMart	Late due to deviations	17
8/17	10:00	4	57	SaveMart	Bus late	19

## VII. Service Disruption Summary

DATE	SCHED. TIME	ROUTE	BUS #	LOCATION	REASON	MINUTES DELAYED
8/17	16:00	4	57	SaveMart	Late due to deviations	17
8/20	10:00	4	54	SaveMart	Bus late	16
8/20	16:00	1	51	SaveMart	Waiting for transfers	17
8/20	16:00	4	54	SaveMart	Late due to deviations	19
8/21	6:15	4	57	Arnold P.O.	Bus late	23
8/21	9:20	4	57	Arnold P.O.	Bus late	17
8/21	10:00	4	57	SaveMart	Late due to deviations	30
8/21	10:48	4	57	Columbia	Bus late	22
8/21	11:25	4	57	SaveMart	Bus late	20
8/21	16:00	4	50	SaveMart	Late due to deviations	17
8/22	6:15	4	54	Arnold P.O.	Bus late	19
8/22	10:00	4	54	SaveMart	Bus late	18
8/23	6:15	4	54	Arnold P.O.	Bus late	16
8/23	10:00	4	54	SaveMart	Bus late	17

## VII. Service Disruption Summary

DATE	SCHED. TIME	ROUTE	BUS #	LOCATION	REASON	MINUTES DELAYED
8/23	16:20	Lodi	51	Govt Center	Bus late	17
8/27	6:15	4	57	Arnold P.O.	Bus late	19
8/28	16:00	1	442	SaveMart	Waiting for transfers	17
8/28	16:20	Lodi	442	Govt Center	Bus late	18
8/28	15:20	4	57	Arnold P.O.	Bus late	16
8/28	16:00	4	57	SaveMart	Late due to deviations	17
8/29	6:15	4	50	Arnold P.O.	Bus late	25
8/29	16:00	1	442	SaveMart	Waiting for transfers	19
8/29	16:20	Lodi	442	Govt Center	Bus late	17
8/29	16:00	4	50	Govt Center	Late due to deviations	21
8/29	17:35	4	50	SaveMart	Road blocked by accident	16
8/30	16:00	3	55	West Point	Late due to deviations	20
8/31	11:00	2	54	Govt Center	Late due to deviations	21
8/31	10:00	3	52	Govt Center	Mechanical check	24

## VII. Service Disruption Summary

DATE	SCHED. TIME	ROUTE	BUS #	LOCATION	REASON	MINUTES DELAYED
8/31	15:00	3	55	Govt Center	Late due to deviations	16
8/31	14:40	1	54	Govt Center	Bus late	18
8/31	15:00	1	54	SaveMart	Bus late	26
8/31	15:20	1	54	Govt Center	Bus late	26
8/31	16:00	1	54	SaveMart	Waiting for transfers	26
8/31	16:20	Lodi	54	Govt Center	Bus late	27
8/31	16:00	4	57	SaveMart	Late due to deviations	28
8/31	17:35	4	57	SaveMart	Bus late	19

# VIII. Fleet Maintenance Report

Identified Concern	Bus	Date Filed	Action Taken	Date Reconsiled	Completed By
No power	50	6-Aug	Broken smog pump	7-Aug	JC
Electrical nonoperational	50	8-Aug	Replace alternator	9-Aug	JC
Small chip in windshield	50	14-Aug	Repaired	22-Aug	JC
Screw in front tire	51	7-Aug	Repaired	7-Aug	JC
Shift indicator broken	51	22-Aug	Repaired	22-Aug	JC
Vehicle leaking oil	51	31-Aug	Sent to Elk Grove Ford for repair	OPEN	
Wheelchair interlock broken	52	10-Aug	Returned to Elk Grove Ford for repair	15-Aug	Elk Grove
Power steering leak	56	13-Aug	Remove and replace steering hose and adapters	13-Aug	JC
Body damage	56	20-Aug	Repair damage that occurred at Elk Grove Ford	22-Aug	JC
Air conditioning not cold	56	23-Aug	Replaced receiver / dryer	23-Aug	RB
Bus losing power	56	31-Aug	Bus sent back to Elk Grove Ford for repair	OPEN	
Air conditioning non operational	57	4-Aug	Air conditioning repaired by Keep It Cool	4-Aug	Keep It Cool
Air conditioning non operational	57	21-Aug	Replace front A/C manifold hose assembly, repair high side fitting and reroute hoses	24-Aug	RB
Window seal missing	442	16-Aug	Replaced seal	16-Aug	JC
No destination sign	442	21-Aug	Installed destination sign	21-Aug	RB

# IX. Wheelchair Lift Use

For the month of: August 2007

<b>Date</b>	<b>Vehicle #</b>	<b>Pick up Point</b>	<b>Drop off Point</b>	<b>Pick-up time</b>	<b>Drop-off time</b>	<b>Uses</b>
8/6	51	SaveMart	CalWorks	9:00	9:30	1
8/6	57	CalWorks	SaveMart	11:52	12:20	1
8/14	55	DMV	Longs	9:19	9:51	1
8/28	51	Columbia	A.C Visitor's Center	14:04	14:34	1
8/30	54	Bear Mt. Apts.	Dr. Oliver	14:41	15:03	1
8/30	54	Dr. Oliver	Bear Mt. Apts.	16:05	16:27	1
8/31	55	Govt. Center	Valley Oak	11:28	11:45	1
8/31	50	Valley Oak	Govt. Center	14:21	15:05	1