



# Monthly Operations Report



MV Transportation, Inc.

# I. Project Manager's Summary

**From:** Annie Self, Calaveras Transit General Manager  
MV Transportation, Inc.  
750 Industrial Way - P. O. Box 1385  
San Andreas, Ca 95249  
Phone (209) 754-4450  
Fax (209) 754-9086

**To:** Calaveras County  
C/o Nathan Atherstone  
Transit Manager, Public Works  
891 Mountain Ranch Road  
San Andreas, CA 95249

## **On time performance checks:**

On time performances were checked throughout the month of December. Of the 335 driver runs checked 91% were on time.

## **Trends:**

When comparing November and December we found there were 782 fewer passenger trips in December than in November.

Route 1 had 1,517 passenger trips in November, and had 1,179 passenger trips in December. There was a decrease of 338 passenger trips on Route 1 in December.

Route 2 had 557 passenger trips in November and 490 passenger trips in December. There was a decrease of 67 passenger trips on Route 2 in December.

Route 3 had 112 passenger trips in November and 137 passenger trips in December. There was an increase of 25 passenger trips on Route 3 in November.

Route 4 had 1,667 passenger trips in November and 1,287 passenger trips in December. There was a decrease of 380 passenger trips on Route 4 in December.

The Lodi route had 438 passenger trips in November and 416 passenger trips in December. There was a decrease of 22 passenger trips on The Lodi Route in December.

The Bear Valley Ski Bus had 233 passenger trips in the month of December.

The General Plan Meeting Shuttle on December 4, 2006 had 16 passenger trips from The Government Center in San Andreas to The Metropolitan in San Andreas for the General Plan meeting.

### **Route Cancellations:**

December 4, 2006 – 17:15 loop from San Andreas to La Contenta, and back to San Andreas.

December 26, 2006 – 10:00 from San Andreas to West Point. 11:00 from West Point to San Andreas. Due to vehicle break down.

December 27, 2006 – 10:00 from San Andreas to West Point. 11:00 from West Point to San Andreas. Due to vehicle break downs.

December 28, 2006 – 10:00 from San Andreas to West Point. 11:00 from West Point to San Andreas. Due to vehicle breakdowns.

### **Comments/Compliments/Complaints:**

There were no comments, compliments, or complaints received in the month of December.

### **Safety and Training:**

Decembers Safety Meeting was held on Saturday December 19, 2006. The main focus of this meeting was The System Security and Emergency Preparedness Plan.

Congratulations to Pam Campbell for successfully completing training, and passing her DMV drive test. Welcome aboard Pam.

### **Overview:**

Passenger trips continued to drop during the month of December. The Bear Valley Ski Bus started running on December 17, 2006. Passenger trips for this run climbed during the week between Christmas and New Years Day. We hope to see passenger trips increase over the next few months.

# II. Billing Summary

P.O. Box 39000, Dept. 33135  
 San Francisco, CA 94139-3135

## INVOICE

Customer	
Number: 5901	Name: County of Calaveras
Address: 891 Mountain Ranch Rd.	
City: San Andreas	State: CA ZIP: 95249
Contact: Nathan Atherstone Transit and Transportation Planner	

Terms	1/2/2007
Due Date	NET 30
	2/1/2007

Qty	Description	Account code	Unit Price	TOTAL
1	<b>Fixed Fee December 2006</b>	4080	\$12,381.58	\$12,381.58
938.27	<b>Variable December 2006</b>	4080	\$30.43	\$28,551.56
	Subtotal			
6.08	<b>General Plan Meeting 12/04</b>	4080	\$30.43	\$185.01
32.83	<b>Bear Valley Ski Bus Reg Hours</b>	4080	\$30.43	\$999.02
27.50	<b>Bear Valley Ski Bus OT Hours</b>	4080	\$38.90	\$1,069.75
	Subtotal			\$43,186.92
1004.68	Hours Sub Total			
1	Progress Payment 15th of the Month	4080	(\$18,051.94)	-\$18,051.94
1	Progress Payment End of Month	4080	(\$18,051.94)	-\$18,051.94
	SubTotal			\$7,083.04
	<b>TOTAL</b>			<b>\$7,083.04</b>



# III. Deposit Summary

## Current Month Deposit Summary

Date	Collection Period	Tickets	DAR	Fixed Rt	Special	Total
12/6	12/1, 12/4 - 12/5	\$2,552.00		\$346.50		\$2,898.50
12/8	12/6 - 12/7	\$42.50		\$218.00		\$260.50
12/13	12/8, 12/11 - 12/12	\$2.50		\$309.00		\$311.50
12/15	12/13 - 12/14	\$32.50		\$212.00		\$244.50
12/19	12/15, 12/17 - 12/18	\$10.00		\$247.00		\$257.00
12/21	12/19 - 12/20	\$48.00		\$169.00		\$217.00
12/27	12/21, 12/26	\$2.50		\$213.00		\$215.50
12/28	12/27	\$292.50		\$282.50		\$575.00
1/3	12/28 - 12/31			\$1,055.00		\$1,055.00
						\$0.00
						\$0.00
						\$0.00
		\$2,982.50	\$0.00	\$3,052.00	\$0.00	\$6,034.50

**Notes:**

January 1st deposit for December Vault Count

Matches county deposit records?

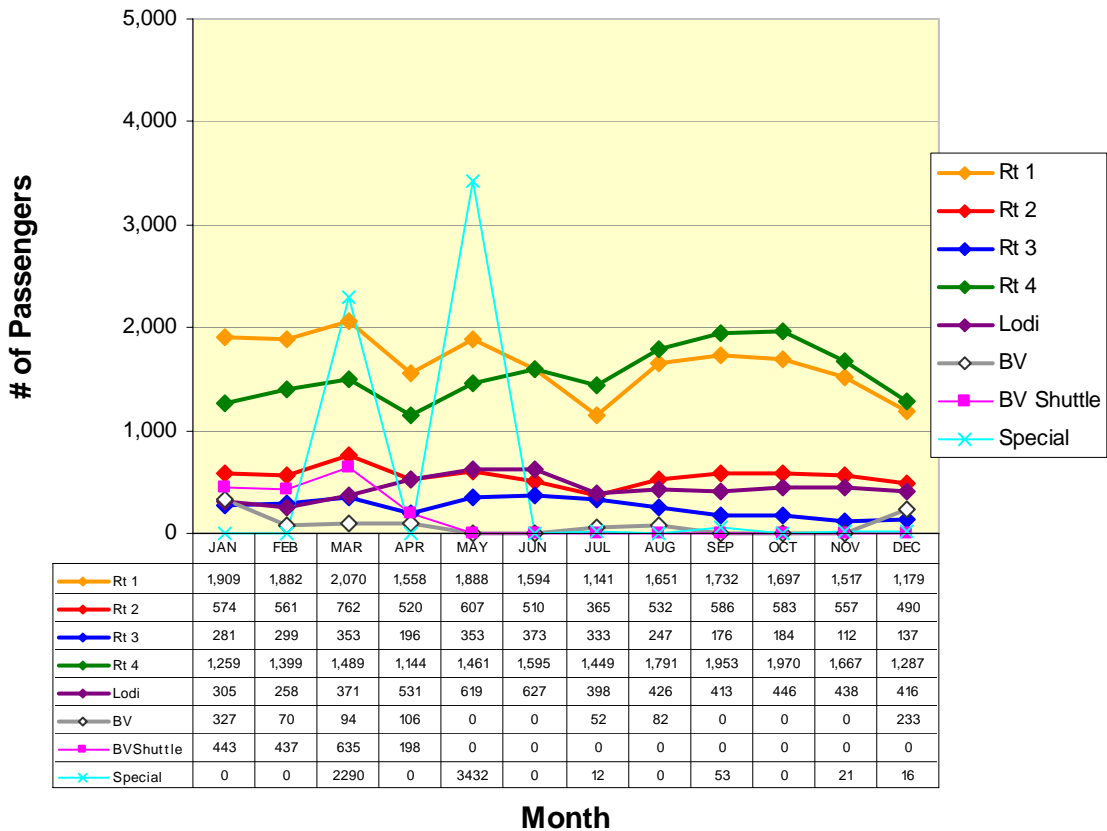
## IV. Current Month Operational Statistics

	Fixed Rt.	Lodi	Special	Bear Valley	BV Shuttle	Total
Ridership	3093	416	16	233	0	3,758
Vehicle Hours	939.48	132.48	6.08	65.07	0.00	1,143.12
Vehicle Service Hours	808.83	129.43	6.08	60.34	0.00	1,004.69
Operating Days	19	19	1	7	0	22
Vehicle Service Miles	22,383	4,328	20	869	0	27,600

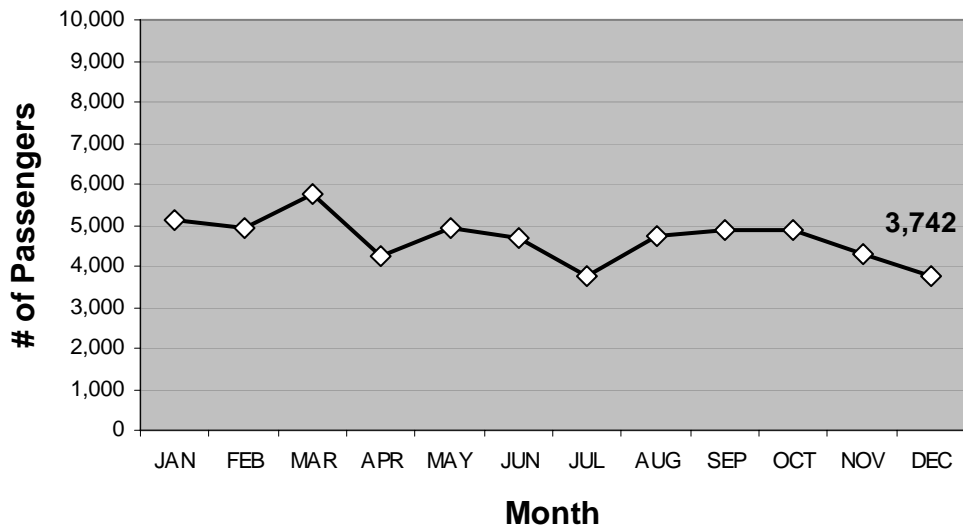
	Rt 1	Rt 2	Rt 3	Rt 4	LODI	All
Cash Regular	297	125	82	536	97	1,137
Cash Discount	220	86	8	273	100	687
Pass Regular	25	25	4	8	2	64
Pass Discount	89	32	1	76	56	254
Ticket Regular	103	36	4	29	16	188
Ticket Discount	72	84	0	71	6	233
Transfer	281	72	25	228	102	708
Promo	0	0	0	0	0	0
Free	52	14	6	26	18	116
Day Pass	40	16	7	40	19	122
Total Passenger #	1,179	490	137	1,287	416	3,509

# V. Ridership Trends

## Calaveras Transit Ridership



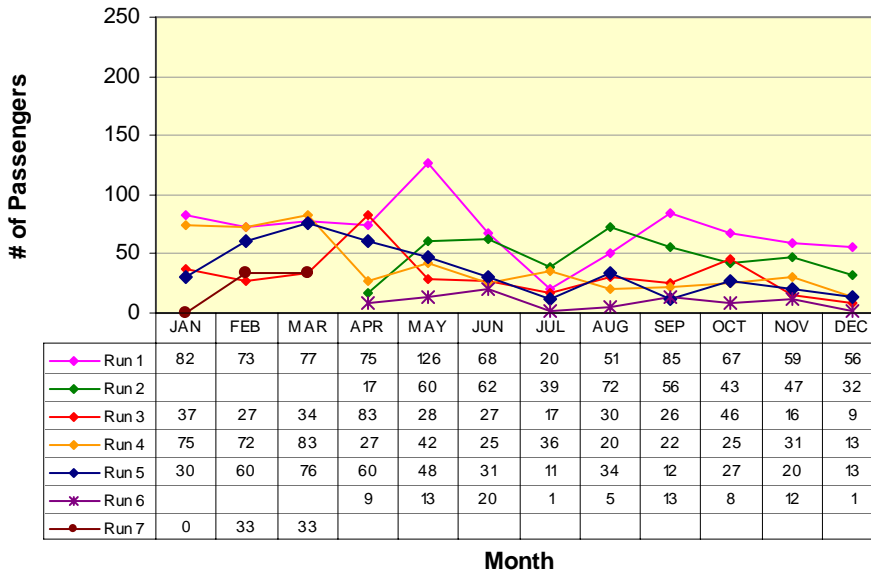
## Fixed Route Ridership



# ROUTE 1a

Rancho Calaveras / Valley Springs / San Andreas

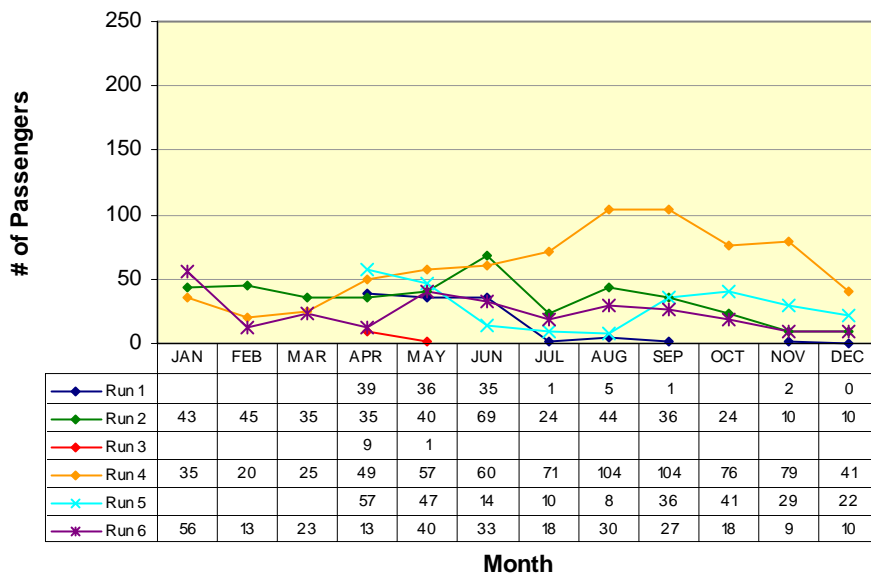
## Route 1a(E) (Rancho Calaveras to San Andreas\*)



- RUN 1:**  
La Contenta (S) 7:00am  
Govt Center 7:40am
- RUN 2:**  
Valley Oak Center 7:57am  
Govt Center 8:16am
- RUN 3:**  
La Contenta (N) 8:22am  
Govt Center 9:11am
- RUN 4:**  
La Contenta (N) 11:54am  
Govt Center 12:19pm
- RUN 5:**  
Valley Oak Center 5:00pm  
Govt Center 5:20pm
- RUN 6:**  
La Contenta (N) 5:49pm  
Govt Center 6:14pm

\*Does not include Lodi Service runs

## Route 1a(W) (Government Center to Rancho Calaveras\*)



- RUN 1:**  
Govt Center 6:50am  
La Contenta (N) 8:22am
- RUN 2:**  
Govt Center 7:40am  
Valley Oak Center 7:56am
- RUN 3: (X)**  
Govt Center 3:45pm  
Valley Oak Center 5:00pm
- RUN 4:**  
Govt Center 11:20am  
La Contenta (N) 11:54am
- RUN 5:**  
Govt Center 1:00pm  
Valley Oak Center 1:17pm
- RUN 6:**  
Govt Center 5:15pm  
La Contenta (N) 5:49pm

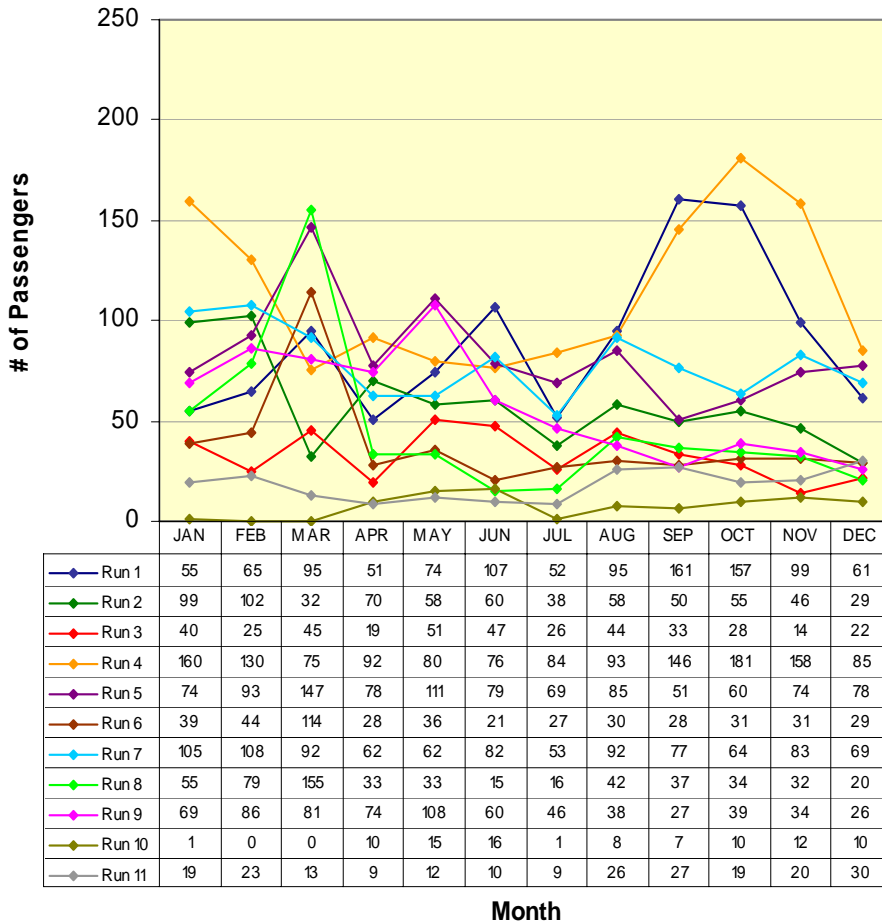
(X) Former Milton Run

\* Does not include Lodi Service runs

# ROUTE 1b

San Andreas / Angels Camp

## Route 1b(S) (San Andreas to Angels Camp)



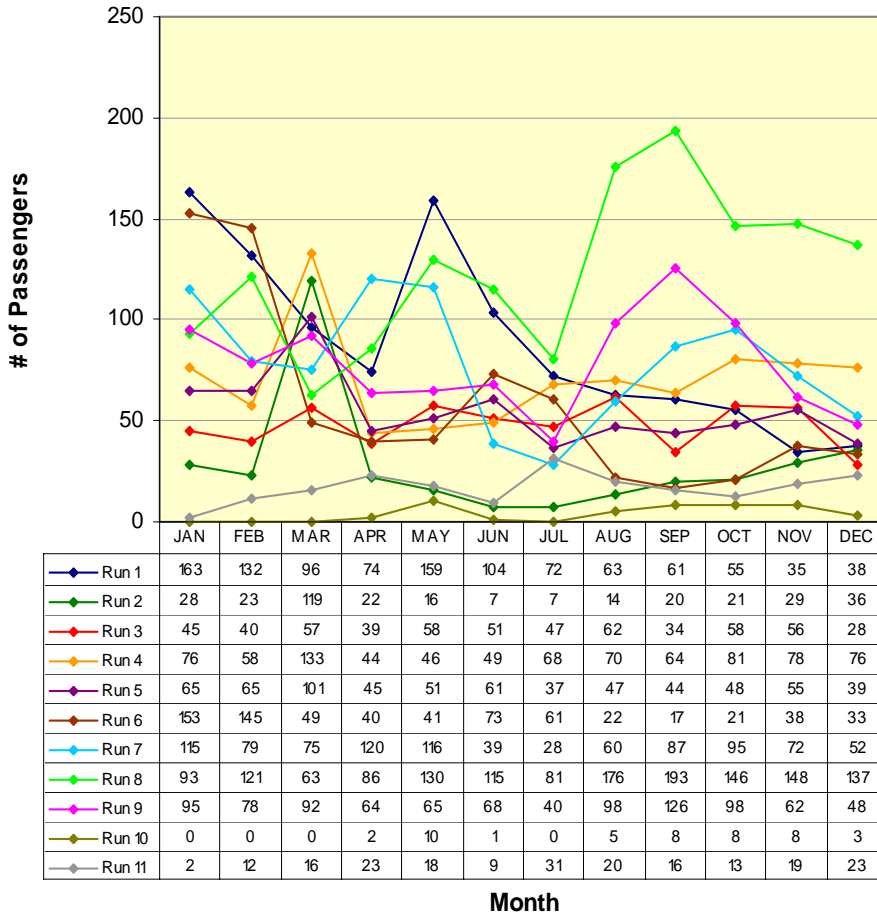
<b>RUN 1:</b>	S.A. Post Office	6:45am
	Visitor's Center	7:10am
<b>RUN 2:</b>	Govt Center	7:40am
	Visitor's Center	8:00am
<b>RUN 3:</b>	Govt Center	8:16am
	Visitor's Center	8:34am
<b>RUN 4:</b>	Govt Center	9:11am
	Visitor's Center	9:30am
<b>RUN 5:</b>	Govt Center	11:38am
	Visitor's Center	12:00pm
<b>RUN 6:</b>	Govt Center	12:19pm
	Visitor's Center	12:40pm
<b>RUN 7:</b>	Govt Center	2:40pm
	Visitor's Center	3:00pm
<b>RUN 8:</b>	Govt Center	3:20pm
	Visitor's Center	4:00pm
<b>RUN 9:</b>	Govt Center	5:15pm
	Visitor's Center	5:35pm
<b>RUN 10:</b>	Govt Center	6:14pm
	Visitor's Center	6:35pm
<b>RUN 11:</b>	Govt Center	7:08pm
	Visitor's Center	7:30pm

*\*Not all runs end in same location*

# ROUTE 1b

San Andreas / Angels Camp

## Route 1b(N) (Angels Camp to San Andreas)

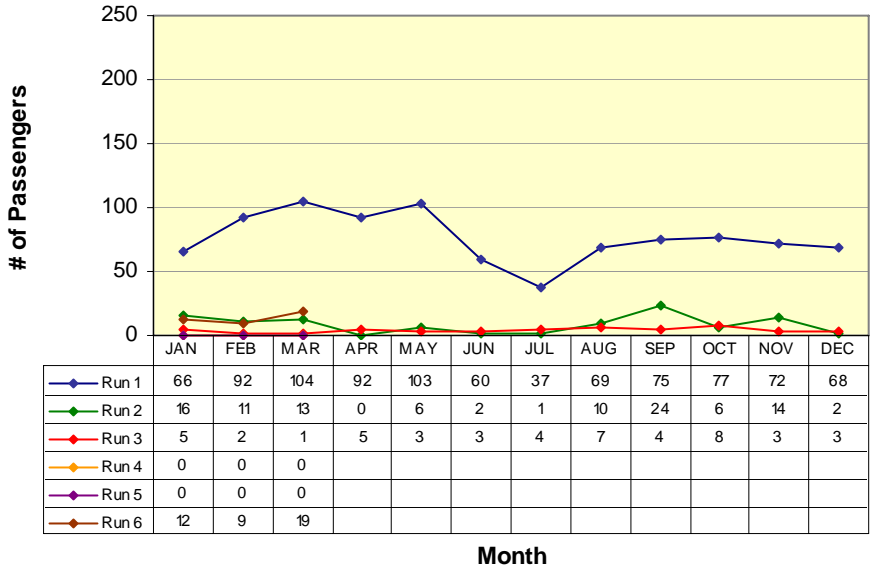


<b>RUN 1:</b>	
Save Mart	7:10am
Govt Center	7:40am
<b>RUN 2:</b>	
Save Mart	8:00am
H.S. St. / Hwy. 49	8:24am
<b>RUN 3:</b>	
Save Mart	9:00am
Govt Center	9:20am
<b>RUN 4:</b>	
Save Mart	11:00am
Govt Center	11:20am
<b>RUN 5:</b>	
Save Mart	12:00pm
Govt Center	12:20pm
<b>RUN 6:</b>	
Save Mart	12:40pm
Govt Center	1:00pm
<b>RUN 7:</b>	
Save Mart	3:00pm
Govt Center	3:20pm
<b>RUN 8:</b>	
Save Mart	4:00pm
Govt Center	4:20pm
<b>RUN 9:</b>	
Save Mart	5:35pm
H.S. St. / Hwy. 49	5:59pm
<b>RUN 10:</b>	
Save Mart	6:35pm
H.S. St. / Hwy. 49	6:59pm
<b>RUN 11:</b>	
Save Mart	7:30pm
H.S. St. / Hwy. 49	7:54pm

# ROUTE 2a

Railroad Flat / Mountain Ranch / San Andreas

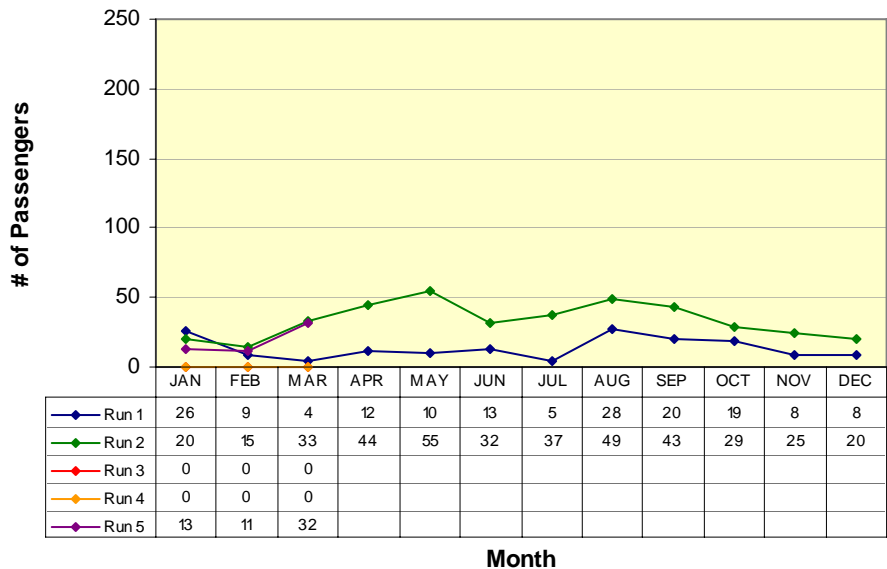
## Route 2a(W) (Railroad Flat/Mtn Ranch to San Andreas\*)



**RUN 1:**  
Community Center 7:00am  
Govt Center 7:40am  
**RUN 2:**  
Blunder Inn 9:10am  
Govt Center 9:23am  
**RUN 3:**  
Community Center 6:30pm  
Govt Center 7:00pm

*\*Not all runs begin in same location*

## Route 2a(E) (San Andreas to Mtn Ranch/Railroad Flat\*)



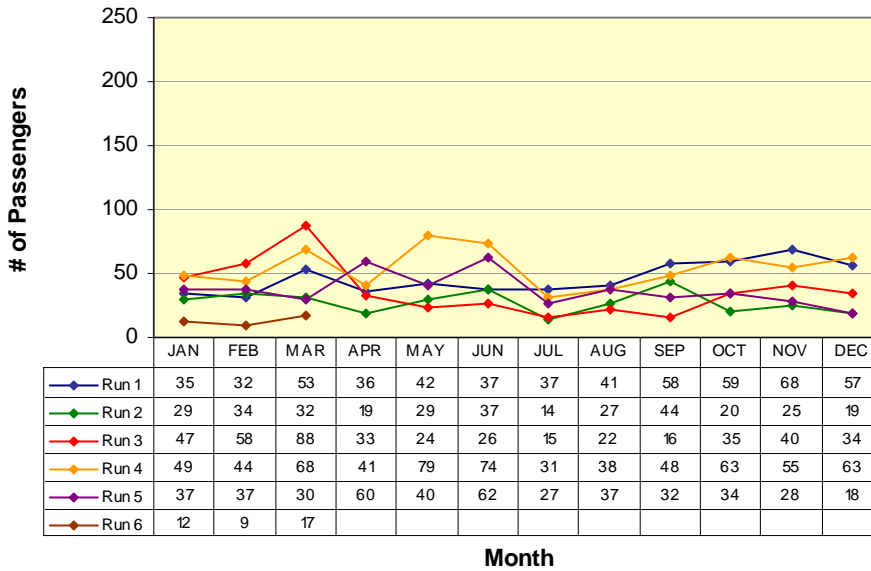
**RUN 1:**  
Govt Center 8:48am  
Blunder Inn 9:01am  
**RUN 2:**  
Govt Center 5:55pm  
Community Hall 6:30pm

*\*Not all runs end in same location*

# ROUTE 2b

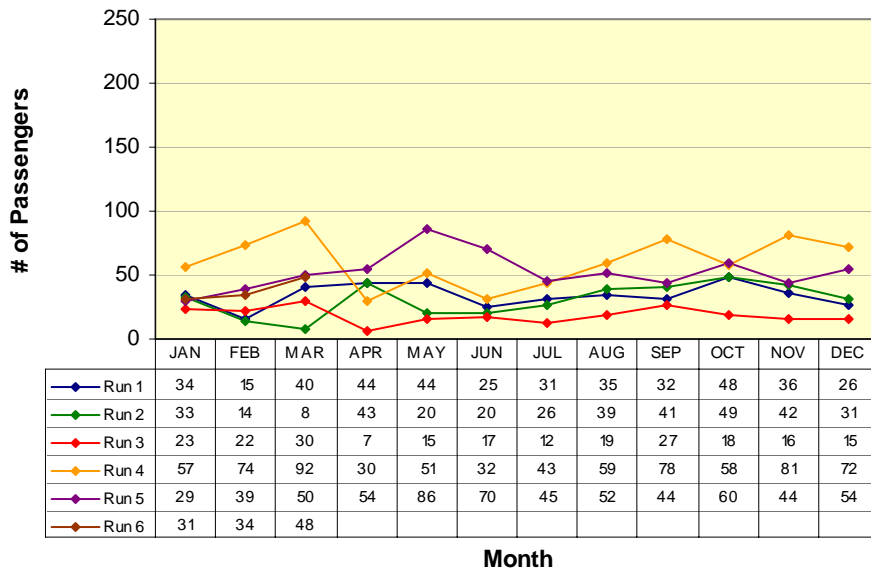
San Andreas / Mokelumne Hill / Jackson

## Route 2b(N) (San Andreas to Jackson)



<b>RUN 1:</b>	
Govt Center	7:40am
Raley's	8:13am
<b>RUN 2:</b>	
Govt Center	9:23am
Raley's	9:53am
<b>RUN 3:</b>	
Govt Center	11:00am
Raley's	11:33am
<b>RUN 4:</b>	
Govt Center	1:30pm
Raley's	2:03pm
<b>RUN 5:</b>	
Govt Center	4:10pm
Raley's	4:44pm

## Route 2b(S) (Jackson to San Andreas)

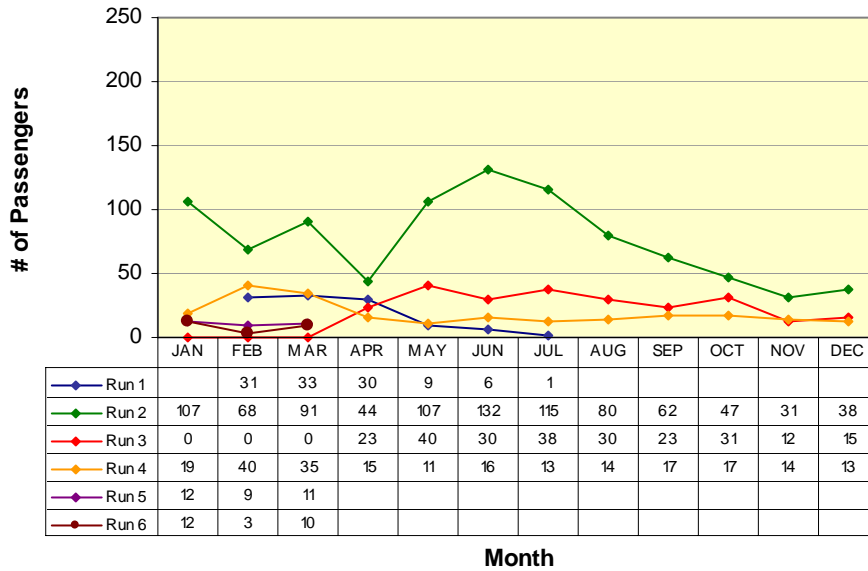


<b>RUN 1:</b>	
Raley's	8:18am
Govt Center	8:48am
<b>RUN 2:</b>	
Raley's	10:23am
Govt Center	10:53am
<b>RUN 3:</b>	
Raley's	11:40am
Govt Center	12:10pm
<b>RUN 4:</b>	
Raley's	2:07pm
Govt Center	3:00pm
<b>RUN 5:</b>	
Raley's	5:07pm
Govt Center	5:45pm

# ROUTE 3

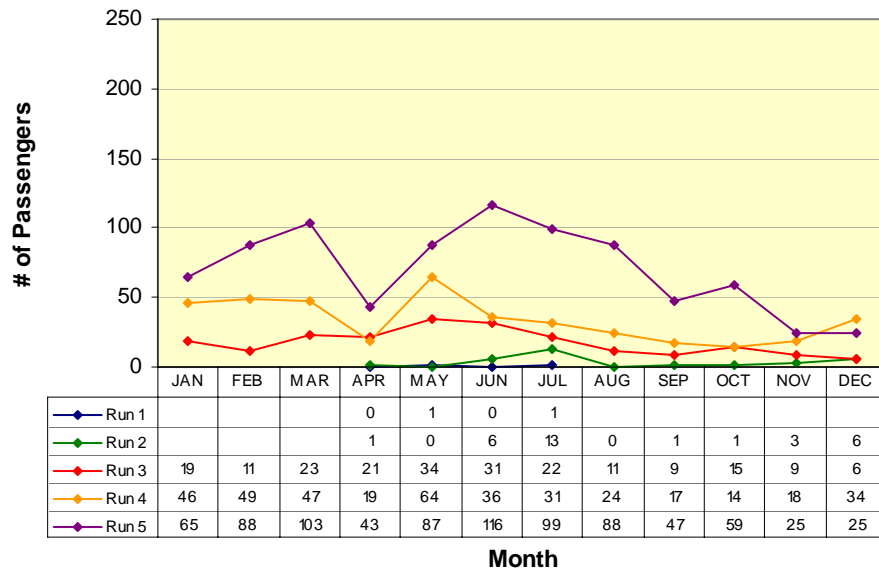
West Point / Glencoe / Mokelumne Hill / San Andreas

## Route 3(W) (West Point to San Andreas)



**RUN 1:**  
Community Hall 6:00am  
Govt Center 6:50am  
**RUN 2:**  
Community Hall 6:50am  
Govt Center 7:40am  
**RUN 3:**  
Community Hall 11:00am  
Govt Center 11:50am  
**RUN 4:**  
Community Hall 4:00pm  
Govt Center 4:50pm

## Route 3(E) (San Andreas to West Point)

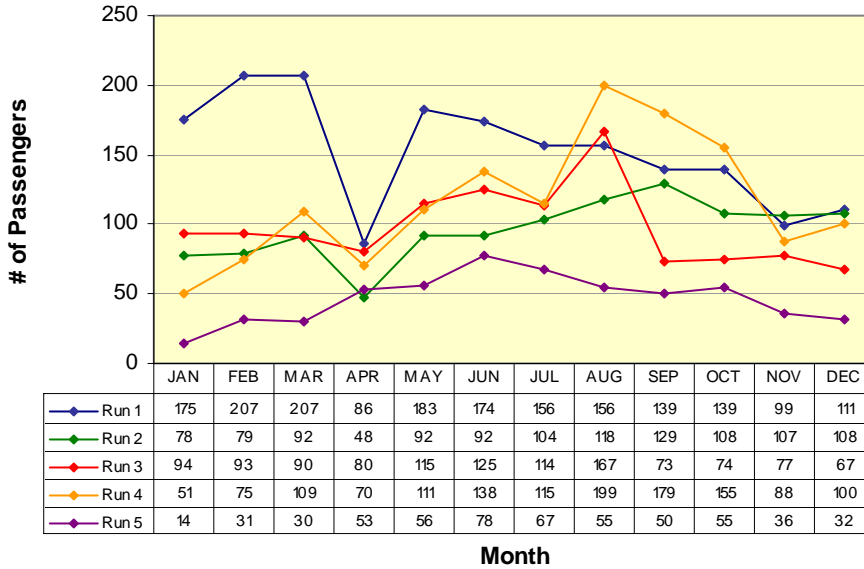


**RUN 1:**  
Moke Hill STP 5:35am  
Community Hall 6:00am  
**RUN 2:**  
Moke Hill STP 6:15am  
Community Hall 6:50am  
**RUN 3:**  
Govt Center 10:00am  
Community Hall 10:50am  
**RUN 4:**  
Govt Center 3:00pm  
Community Hall 3:50pm  
**RUN 5:**  
Govt Center 5:20pm  
Community Hall 6:10pm

# ROUTE 4a

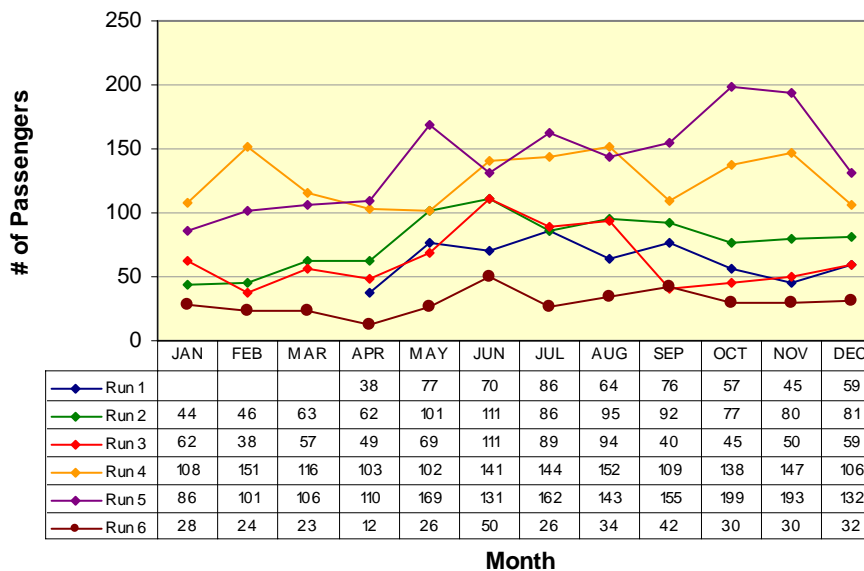
Arnold / Avery / Forest Meadows / Murphys / Angels Camp

## Route 4a(W) (Arnold to Angels Camp)



<b>RUN 1:</b>	
Post Office	6:15am
Save Mart	7:10am
<b>RUN 2:</b>	
Post Office	9:20am
Save Mart	10:00am
<b>RUN 3:</b>	
Post Office	12:35pm
Save Mart	1:13pm
<b>RUN 4:</b>	
Post Office	3:20pm
Save Mart	4:00pm
<b>RUN 5:</b>	
Post Office	6:25pm
Save Mart	7:04pm

## Route 4a(E) (Angels Camp to Arnold)

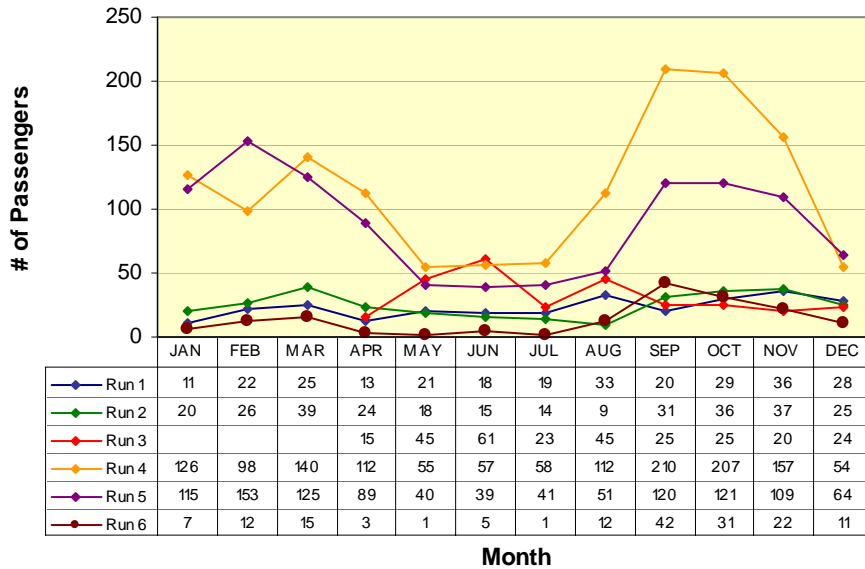


<b>RUN 1:</b>	
Save Mart	5:44am
Post Office	6:15am
<b>RUN 2:</b>	
Save Mart	8:35am
Post Office	9:15am
<b>RUN 3:</b>	
Save Mart	11:25am
Post Office	12:05pm
<b>RUN 4:</b>	
Save Mart	2:37pm
Post Office	3:17pm
<b>RUN 5:</b>	
Save Mart	5:35pm
Post Office	6:15pm
<b>RUN 6:</b>	
Save Mart	9:47pm
Post Office	10:27pm

# Route 4b

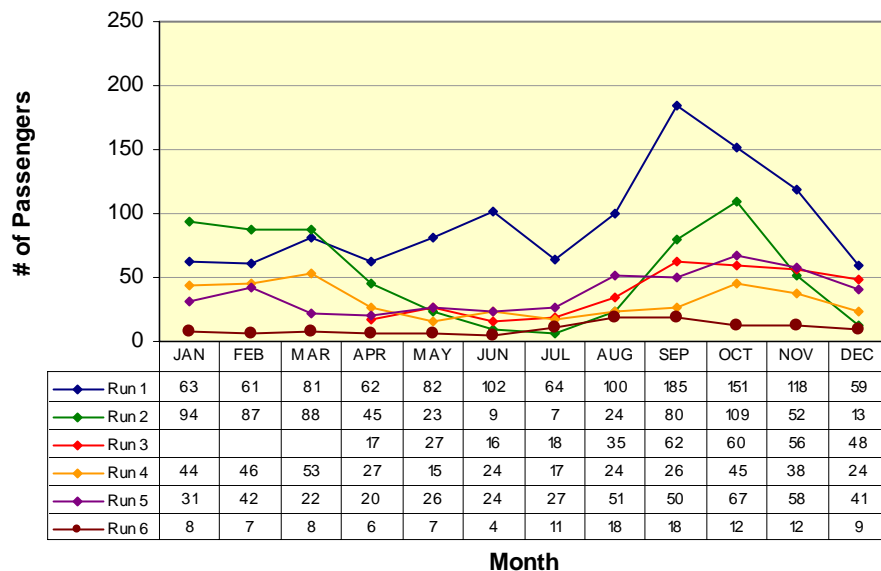
Angels Camp / Calaveras Center / Columbia College

## Route 4b(N) (Columbia College to Angels Camp)



<b>RUN 1:</b>	
Oak Pavilion	7:58am
Save Mart	8:35am
<b>RUN 2:</b>	
Oak Pavilion	10:18am
Save Mart	11:00am
<b>RUN 3:</b>	
Oak Pavilion	10:48am
Save Mart	11:25am
<b>RUN 4:</b>	
Oak Pavilion	2:00pm
Save Mart	2:37pm
<b>RUN 5:</b>	
Oak Pavilion	5:00pm
Save Mart	5:35pm
<b>RUN 6:</b>	
Oak Pavilion	9:10pm
Save Mart	9:47pm

## Route 4b(S) (Angels Camp to Columbia College)

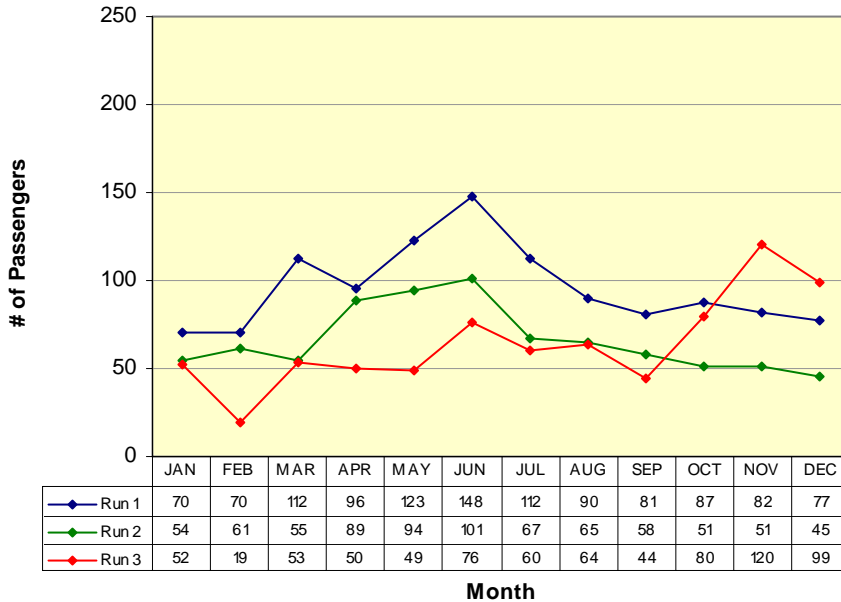


<b>RUN 1:</b>	
Save Mart	7:10am
Oak Pavilion	7:50am
<b>RUN 2:</b>	
Save Mart	9:30am
Oak Pavilion	10:10am
<b>RUN 3:</b>	
Save Mart	10:00am
Oak Pavilion	10:42am
<b>RUN 4:</b>	
Save Mart	1:13pm
Oak Pavilion	1:55pm
<b>RUN 5:</b>	
Save Mart	4:00pm
Oak Pavilion	4:42pm
<b>RUN 6:</b>	
Save Mart	8:20pm
Oak Pavilion	9:02pm

# Lodi

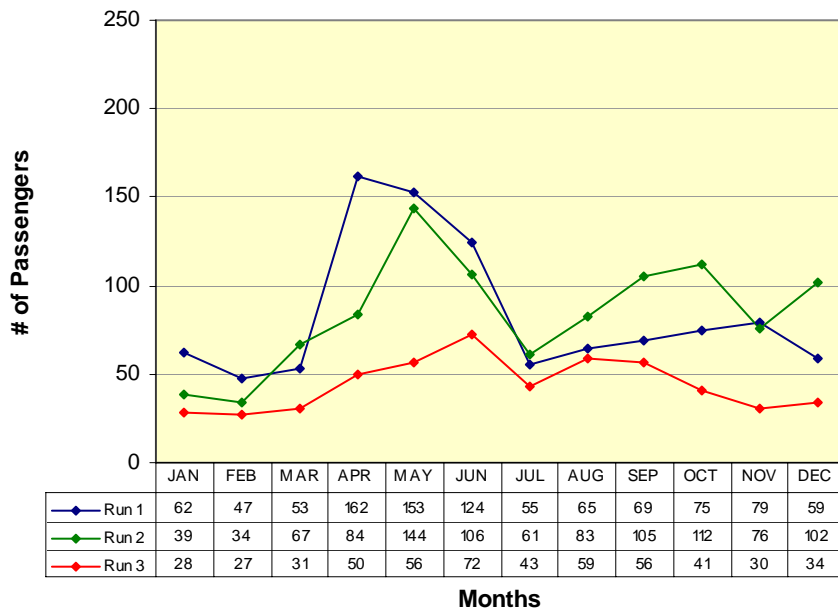
San Andreas / Valley Springs / Wallace / Clements / Lockeford / Victor / Lodi

## San Andreas to Lodi (W)



**RUN 1:**  
Govt Center 9:20am  
Lodi Station 10:15am  
**RUN 2:**  
Govt Center 12:20pm  
Lodi Station 1:15pm  
**RUN 3:**  
Govt Center 4:20pm  
Lodi Station 5:15pm

## Lodi to San Andreas (E)



**RUN 1:**  
Lodi Station 10:30am  
Govt Center 11:38am  
**RUN 2:**  
Lodi Station 1:30pm  
Govt Center 2:40pm  
**RUN 3:**  
Lodi Station 6:00pm  
Govt Center 7:08pm

# VI. Vehicles Report

<i>Vehicle #</i>	<i>End Miles</i>	<i>Miles this Month</i>	<i>Miles YTD</i>	<i>Fuel Mileage</i>	<i>Breakdown Frequency</i>	<i>Repair Costs</i>	<i>Major Components Repaired / Replaced</i>
<b>Bus 48</b>	327859	0	12798	0.0	4,614		
<b>Bus 50</b>	381702	6763	27238	10.5	26,643		
<b>Bus 51</b>	367301	5540	18771	10.3	16,251		
<b>Bus 52</b>	269717	3182	14125	6.7	14,125		
<b>Bus 53</b>	411871	3997	19725	8.4	3,997	\$1,626.75	Radius Arm Bushing, Frame Bracket, Front Bumper, Ball Joints
<b>Bus 54</b>	218109	0	24223	0.0	28,342		
<b>Bus 55</b>	183429	1612	16656	8.8	8,026		
<b>Bus 56</b>	123753	4929	30732	9.1	32,124		
<b>Bus 57</b>	135292	2225	31083	8.9	28,987		
<b>Bus 485</b>	356575	1220	3180	14.7	360,081		
<b>Bus 345</b>	356575	1042	1042	12.5	360,082		

## VII. Service Disruption Summary

DATE	SCHED. TIME	ROUTE	BUS #	LOCATION	REASON	MINUTES DELAYED
4-Dec	17:15	1	56	Govt. Center	Cancelled	
7-Dec	16:00	4	50	Save Mart	Deviations	20
7-Dec	16:00	1	52	Save Mart	Waiting for transfers	20
13-Dec	16:00	4	52	Save Mart	Deviations	25
13-Dec	16:00	1	56	Save Mart	Waiting for transfers	25
21-Dec	16:00	4	57	Save Mart	Deviations	18
21-Dec	16:00	1	53	Save Mart	Waiting for transfers	18
26-Dec	10:00	3	345	Govt. Center	Cancelled	
26-Dec	11:00	3	345	West Point	Cancelled	
27-Dec	10:00	3	345	Govt. Center	Cancelled	
27-Dec	11:00	3	345	West Point	Cancelled	
28-Dec	10:00	3	345	Govt. Center	Cancelled	
28-Dec	11:00	3	345	West Point	Cancelled	

## VIII. Fleet Maintenance Report

Calaveras Transit

Fleet Maintenance Report for the Month of

**December-06**

Identified Concern	Bus	Date Filed	Action Taken	Date Reconsiled	Completed By
Rear brakes	345	2-Dec	Adjusted rear brakes	2-Dec	SM
Fender dents and door steps	51	5-Dec	Replace fender and repair steps	5-Dec	Robert Border
Water leak inside bus	54	5-Dec	Repair roof	5-Dec	Robert Border
Defroster non operational	345	5-Dec	Repair defroster	5-Dec	Robert Border
Headlights out of adjustment	56	7-Dec	Adjusted headlights	7-Dec	SM
Windshield wipers	53	12-Dec	Changed wiper blades	12-Dec	SM
Driver's side headlight needs adjustment	56	12-Dec	Adjusted headlight	12-Dec	SM
Brakes soft	53	12-Dec	Adjusted brake drums	12-Dec	SM
Rt outside tire low lread	53	12-Dec	Replaced tire	12-Dec	SM
Rear heater not working	51	13-Dec	Opened heater valve	13-Dec	SM
Driver's side headlight needs adjustment	56	13-Dec	Adjusted headlight	13-Dec	SM
Brake caliper and front shock	55	16-Dec	Replaced right and left calipers and right front shock	16-Dec	SM
Clearance lights not working	51	18-Dec	Replaced pigtail and headlight switch	18-Dec	SM
Oil leak	345	18-Dec	Tightened drain plug	18-Dec	SM
Brakes grab	53	22-Dec	Test drove, couldn't duplicate problem	22-Dec	SM
Broken tire chain	57	27-Dec	Replaced tire chain	27-Dec	SM
Had to jump start bus	51	27-Dec	Replaced batteries	27-Dec	SM
Front fan not working	48	29-Dec	Replace A/C switch, A/C valve, A/C heater control, blower motor and battery	29-Dec	SM
Exhaust smell	48	30-Dec	Adjusted exhaust flange, no leak	30-Dec	SM
Clearance light out	50	31-Dec	Replaced light	31-Dec	SM
Telma system not working	51	31-Dec	Inspected, tightened and repaired Telma control box	31-Dec	SM

# Wheelchair Lift Use

For the month of: December 2006

<b>Date</b>	<b>Vehicle #</b>	<b>Pick up Point</b>	<b>Drop off Point</b>	<b>Pick-up time</b>	<b>Drop-off time</b>
12/4	55	Raleys	Senior Center	1023	1108
12/4	56	Mark Twain Con. Hosp.	Raleys	1330	1407
12/6	55	Raleys	Senior Center	1023	1100
12/6	345	Mark Twain Con. Hosp.	Raleys	1338	1408
12/7	51	Raleys	Senior Center	1035	1103
12/7	55	Mark Twain Con. Hosp.	Raleys	1332	1407
12/8	52	Govt Center	West Point	1001	1046
12/12	345	Raleys	Senior Center	1023	1100
12/12	51	S.A. Post Office	Senior Center	1142	1149
12/12	56	Senior Center	High School St.	1309	1319
12/12	51	Mark Twain Con. Hosp.	Raleys	1336	1413
12/13	51	Raleys	Senior Center	1031	1106
12/13	345	Mark Twain Con. Hosp.	Raleys	1332	1407
12/14	50	Buckskin Rd.	Govt Center	810	817
12/14	56	Govt Center	Buckskin Rd.	1450	1457
12/18	51	Raleys	Senior Center	1023	1107
12/18	345	Mark Twain Con. Hosp.	Raleys	1340	1400
12/19	51	Raleys	Senior Center	1023	1103
12/19	345	Mark Twain Con. Hosp.	Raleys	1330	1417
12/27	50	Raleys	Senior Center	1025	1100
12/27	51	Mark Twain Con. Hosp.	Raleys	1330	1400
12/28	51	Raleys	Senior Center	1023	1100
12/28	50	Mark Twain Con. Hosp.	Raleys	1337	1410
12/29	50	Big Trees Mrkt	Visitor's Center	1256	1338