



Monthly Operations Report



MV Transportation, Inc.

I. Project Manager's Summary

From: Annie Self, Calaveras Transit General Manager
MV Transportation, Inc.
750 Industrial Way - P. O. Box 1385
San Andreas, Ca 95249
Phone (209) 754-4450
Fax (209) 754-9086

To: Calaveras County
C/o Nathan Atherstone
Transit Manager, Public Works
891 Mountain Ranch Road
San Andreas, CA 95249

On time performance checks:

On time performances were checked at various times throughout the month of October. Of the 82 Driver runs checked 94% were on time.

Trends:

When comparing September and October we found there were 20 more passenger trips in October than in September.

Route 1 had 1,732 passenger trips in September, and had 1,697 passenger trips in October. There was a decrease of 35 passenger trips on Route 1 in October.

Route 2 had 586 passenger trips in September and 583 passenger trips in October. There was a decrease of 3 passenger trips on Route 2 in October.

Route 3 had 176 passenger trips in September and 184 passenger trips in October. There was an increase of 8 passenger trips on Route 3 in October.

Route 4 had 1,953 passenger trips in September and 1,970 passenger trips in October. There was an increase of 27 passenger trips on Route 4 in October.

The Lodi route had 413 passenger trips in September and 446 passenger trips in October. There was an increase of 33 passenger trips on the Lodi Route in October.

Special Event of the Murphys Grape Stomp carried 53 passengers on October 7th.

Comments/Compliments/Complaints:

In October 1 complaint was received from a passing motorist concerned about the safety of the Drivers.

Safety and Training:

Octobers safety meeting was held on Saturday October 14, 2006. The main focus of the safety meeting was driving in adverse weather conditions. This was an opportune time to address the installation of manual tire chains and make sure everyone is ready for the upcoming winter months. A make up safety meeting was

scheduled for Wednesday October 18, 2006 for those who were unable to attend the meeting on Saturday.

Overview:

October was another good month for Calaveras Transit. Passenger trips continue to increase. We hope to see this trend continue through the months to come.

III. Deposit Summary

Current Month Deposit Summary

Date	Collection Period	Tickets	DAR	Fixed Rt	Special	Total
10/5	10/2 - 10/4	\$165.00		\$374.00		\$539.00
10/10	10/5 - 10/6	\$10.00		\$194.00		\$204.00
10/13	10/10 - 10/12	\$67.50		\$321.00		\$388.50
10/18	10/13, 10/16 - 10/17	\$756.50		\$324.50		\$1,081.00
10/20	10/18 - 10/19	\$40.00		\$220.50		\$260.50
10/24	10/20, 10/23	\$7.50		\$235.00	\$495.00	\$737.50
10/27	10/24 - 10/26	\$75.00		\$341.50		\$416.50
11/1	10/27, 10/30 - 10/31	\$210.50		\$303.50		\$514.00
						\$0.00
						\$0.00
						\$0.00
						\$0.00
		\$1,332.00	\$0.00	\$2,314.00	\$495.00	\$4,141.00

Notes:

November 1st deposit for October Vault Count

Matches county deposit records?

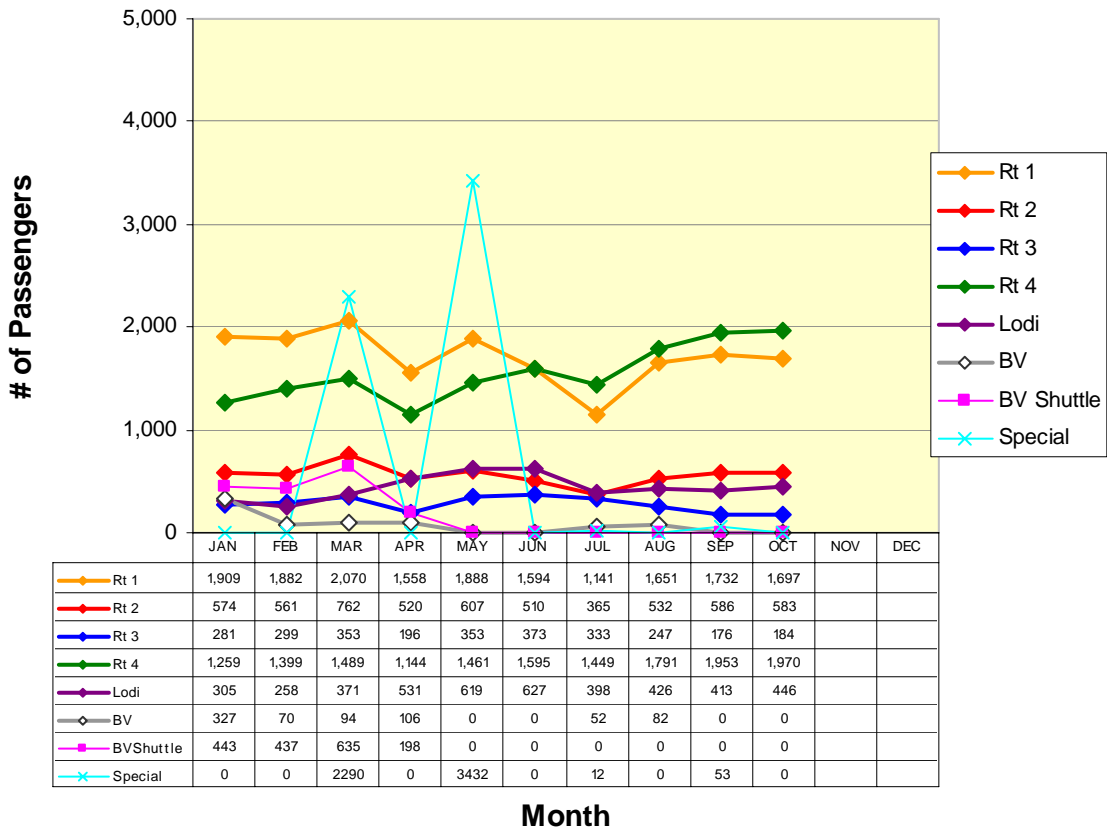
IV. Current Month Operational Statistics

	Fixed Rt.	Lodi	Special	Bear Valley	BV Shuttle	Total
Ridership	4434	446	53	0	0	4,933
Vehicle Hours	1049.50	147.22	9.00	0.00	0.00	1,205.72
Vehicle Service Hours	907.20	142.03	8.50	0.00	0.00	1,057.73
Operating Days	21	21	1	0	0	22
Vehicle Service Miles	24,960	4,802	64	0	0	29,826

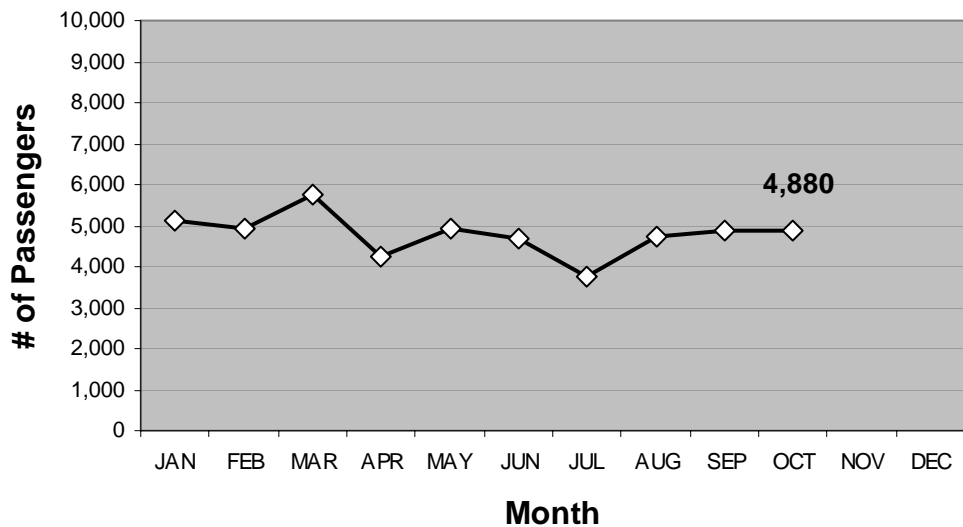
	Rt 1	Rt 2	Rt 3	Rt 4	LODI	All
Cash Regular	297	138	68	622	129	1,254
Cash Discount	338	104	32	420	104	998
Pass Regular	49	27	4	12	2	94
Pass Discount	187	41	3	113	46	390
Ticket Regular	114	46	12	41	25	238
Ticket Discount	131	93	5	191	37	457
Transfer	398	83	29	428	57	995
Promo	0	0	0	0	0	0
Free	85	14	11	65	23	198
Day Pass	98	37	20	78	23	256
Total Passenger #	1,697	583	184	1,970	446	4,880

V. Ridership Trends

Calaveras Transit Ridership



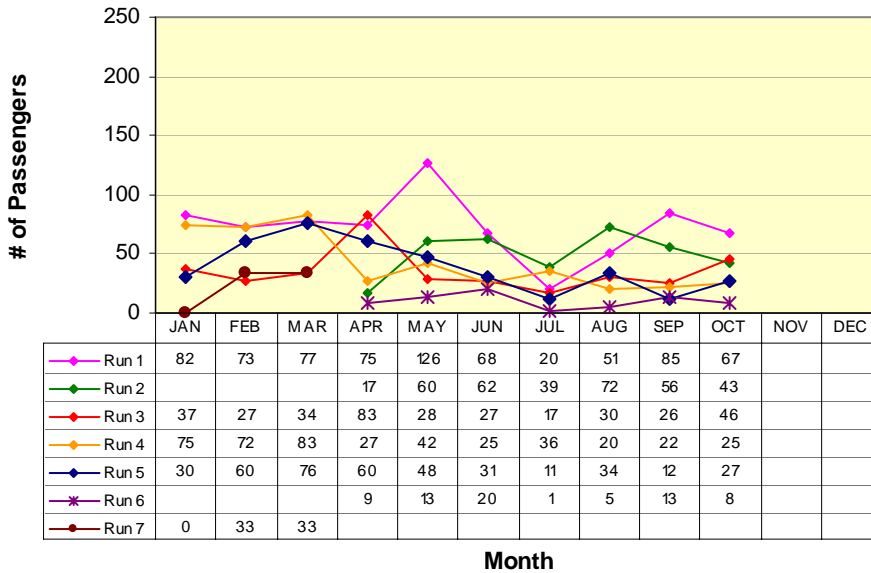
Fixed Route Ridership



ROUTE 1a

Rancho Calaveras / Valley Springs / San Andreas

Route 1a(E) (Rancho Calaveras to San Andreas*)



RUN 1:
La Contenta (S) 7:00am
Govt Center 7:40am

RUN 2:
Valley Oak Center 7:57am
Govt Center 8:16am

RUN 3:
La Contenta (N) 8:22am
Govt Center 9:11am

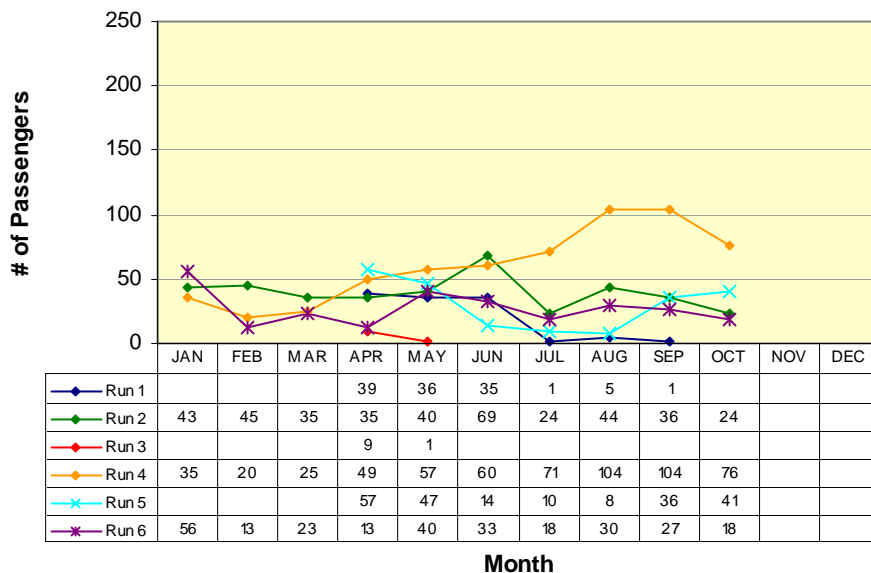
RUN 4:
La Contenta (N) 11:54am
Govt Center 12:19pm

RUN 5:
Valley Oak Center 5:00pm
Govt Center 5:20pm

RUN 6:
La Contenta (N) 5:49pm
Govt Center 6:14pm

*Does not include Lodi Service runs

Route 1a(W) (Government Center to Rancho Calaveras*)



RUN 1:
Govt Center 6:50am
La Contenta (N) 8:22am

RUN 2:
Govt Center 7:40am
Valley Oak Center 7:56am

RUN 3: (X)
Govt Center 3:45pm
Valley Oak Center 5:00pm

RUN 4:
Govt Center 11:20am
La Contenta (N) 11:54am

RUN 5:
Govt Center 1:00pm
Valley Oak Center 1:17pm

RUN 6:
Govt Center 5:15pm
La Contenta (N) 5:49pm

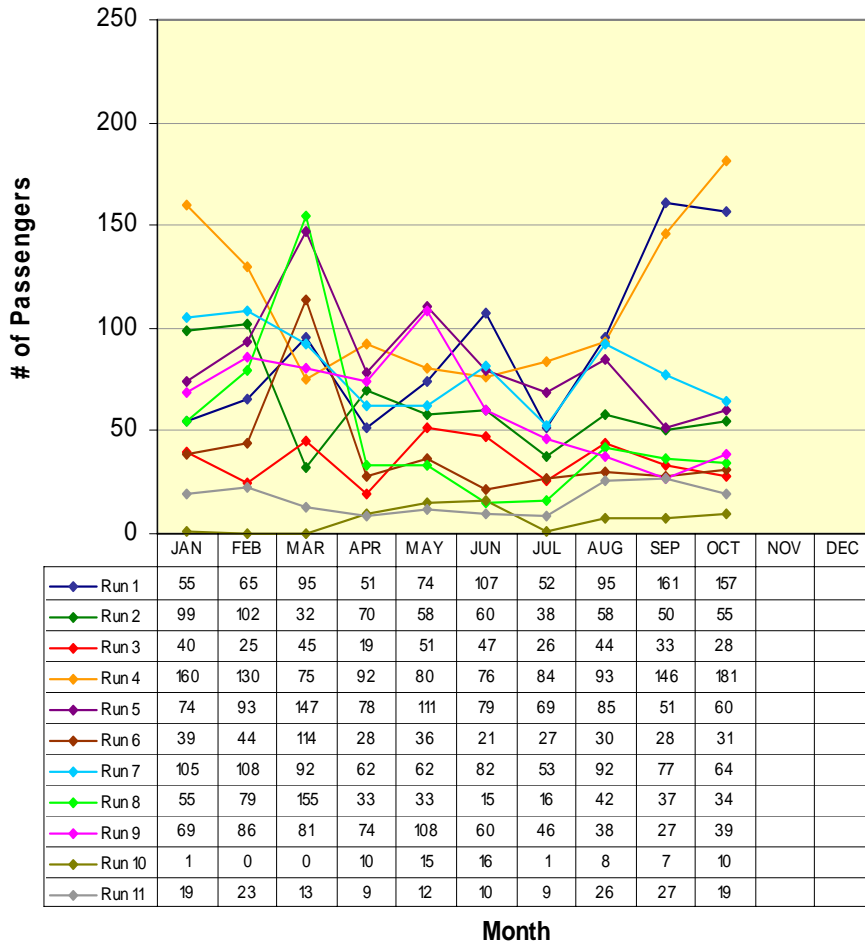
(X) Former Milton Run

* Does not include Lodi Service runs

ROUTE 1b

San Andreas / Angels Camp

Route 1b(S) (San Andreas to Angels Camp)



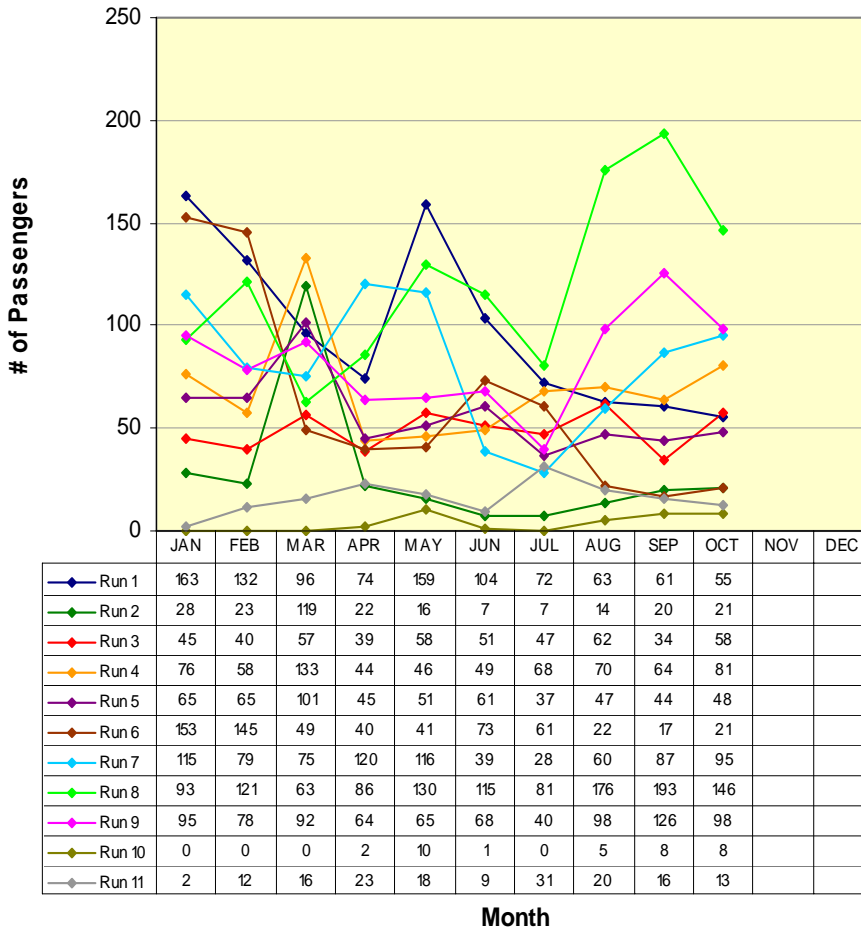
RUN 1:	S.A. Post Office	6:45am
	Visitor's Center	7:10am
RUN 2:	Govt Center	7:40am
	Visitor's Center	8:00am
RUN 3:	Govt Center	8:16am
	Visitor's Center	8:34am
RUN 4:	Govt Center	9:11am
	Visitor's Center	9:30am
RUN 5:	Govt Center	11:38am
	Visitor's Center	12:00pm
RUN 6:	Govt Center	12:19pm
	Visitor's Center	12:40pm
RUN 7:	Govt Center	2:40pm
	Visitor's Center	3:00pm
RUN 8:	Govt Center	3:20pm
	Visitor's Center	4:00pm
RUN 9:	Govt Center	5:15pm
	Visitor's Center	5:35pm
RUN 10:	Govt Center	6:14pm
	Visitor's Center	6:35pm
RUN 11:	Govt Center	7:08pm
	Visitor's Center	7:30pm

**Not all runs end in same location*

ROUTE 1b

San Andreas / Angels Camp

Route 1b(N) (Angels Camp to San Andreas)

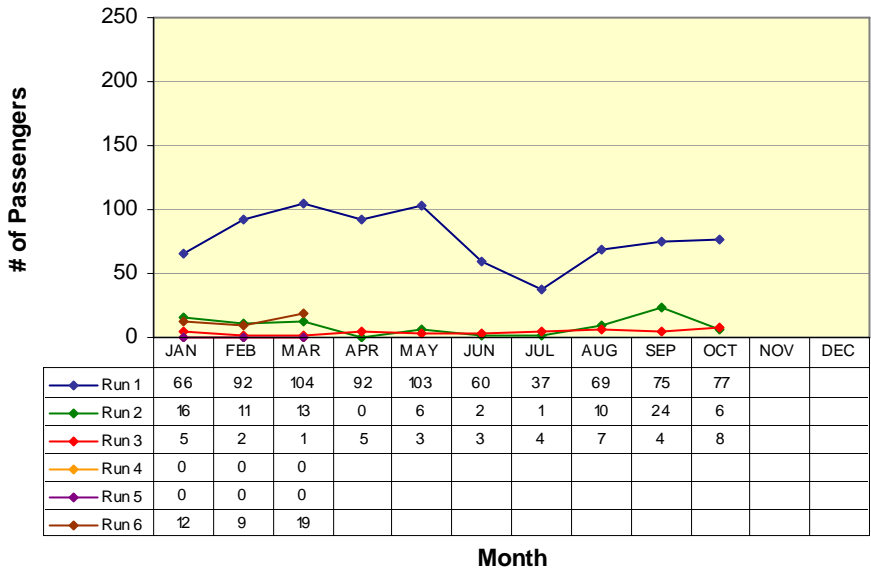


RUN 1:	
Save Mart	7:10am
Govt Center	7:40am
RUN 2:	
Save Mart	8:00am
H.S. St. / Hwy. 49	8:24am
RUN 3:	
Save Mart	9:00am
Govt Center	9:20am
RUN 4:	
Save Mart	11:00am
Govt Center	11:20am
RUN 5:	
Save Mart	12:00pm
Govt Center	12:20pm
RUN 6:	
Save Mart	12:40pm
Govt Center	1:00pm
RUN 7:	
Save Mart	3:00pm
Govt Center	3:20pm
RUN 8:	
Save Mart	4:00pm
Govt Center	4:20pm
RUN 9:	
Save Mart	5:35pm
H.S. St. / Hwy. 49	5:59pm
RUN 10:	
Save Mart	6:35pm
H.S. St. / Hwy. 49	6:59pm
RUN 11:	
Save Mart	7:30pm
H.S. St. / Hwy. 49	7:54pm

ROUTE 2a

Railroad Flat / Mountain Ranch / San Andreas

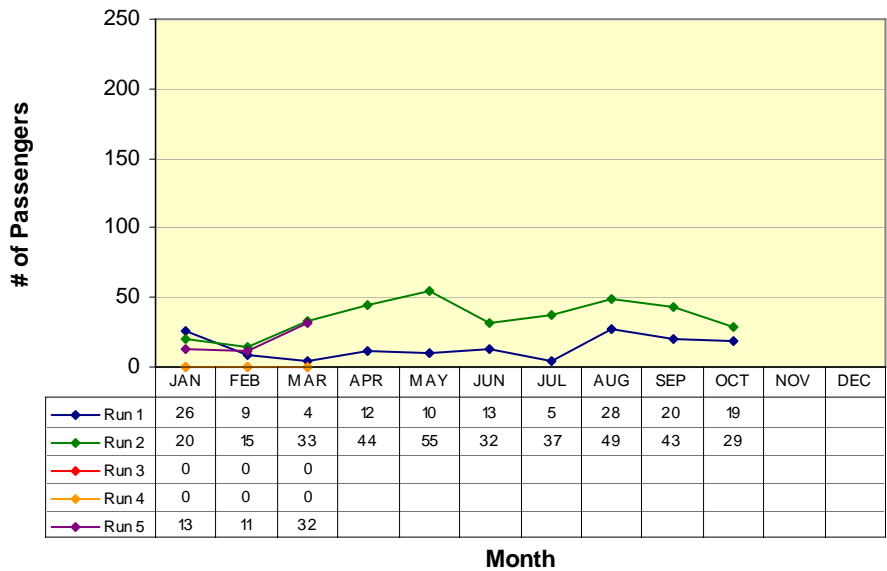
Route 2a(W) (Railroad Flat/Mtn Ranch to San Andreas*)



RUN 1:
Community Center 7:00am
Govt Center 7:40am
RUN 2:
Blunder Inn 9:10am
Govt Center 9:23am
RUN 3:
Community Center 6:30pm
Govt Center 7:00pm

**Not all runs begin in same location*

Route 2a(E) (San Andreas to Mtn Ranch/Railroad Flat*)



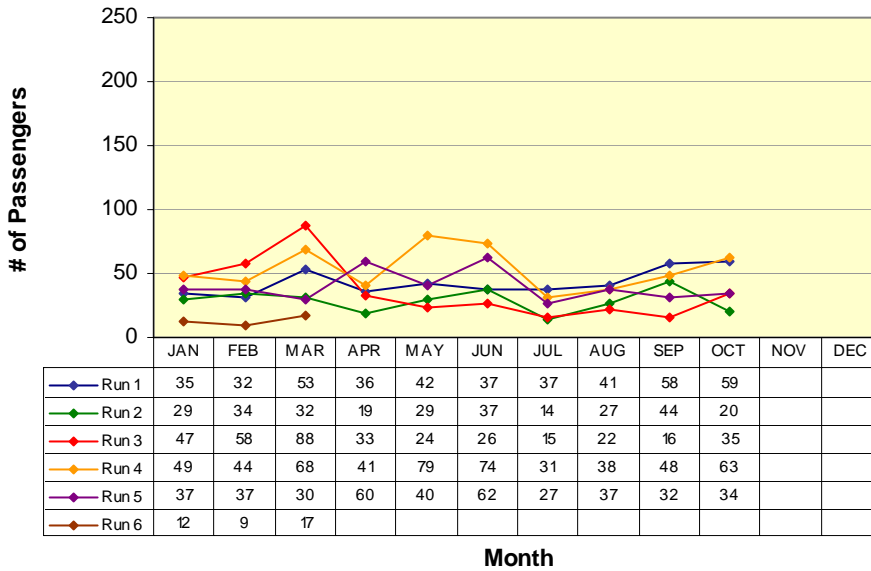
RUN 1:
Govt Center 8:48am
Blunder Inn 9:01am
RUN 2:
Govt Center 5:55pm
Community Hall 6:30pm

**Not all runs end in same location*

ROUTE 2b

San Andreas / Mokelumne Hill / Jackson

Route 2b(N) (San Andreas to Jackson)



RUN 1:
Govt Center 7:40am
Raley's 8:13am

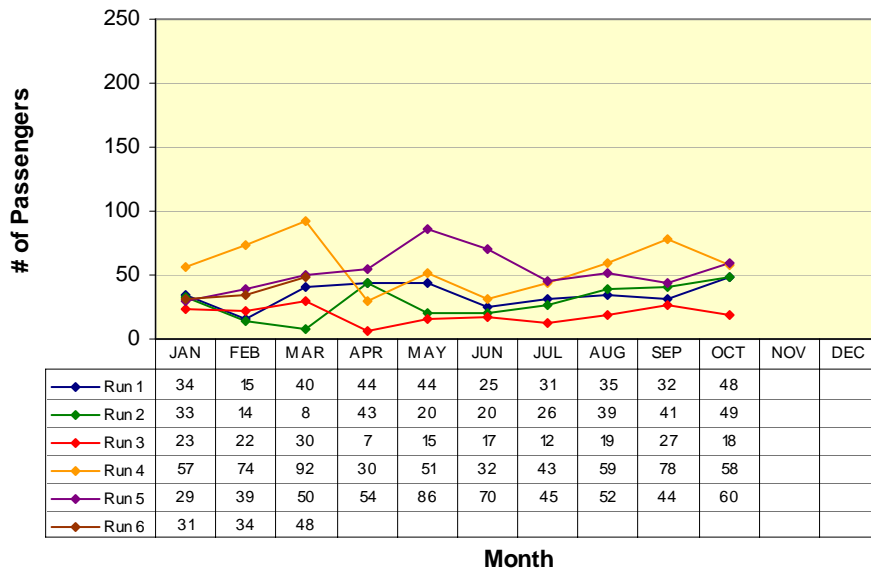
RUN 2:
Govt Center 9:23am
Raley's 9:53am

RUN 3:
Govt Center 11:00am
Raley's 11:33am

RUN 4:
Govt Center 1:30pm
Raley's 2:03pm

RUN 5:
Govt Center 4:10pm
Raley's 4:44pm

Route 2b(S) (Jackson to San Andreas)



RUN 1:
Raley's 8:18am
Govt Center 8:48am

RUN 2:
Raley's 10:23am
Govt Center 10:53am

RUN 3:
Raley's 11:40am
Govt Center 12:10pm

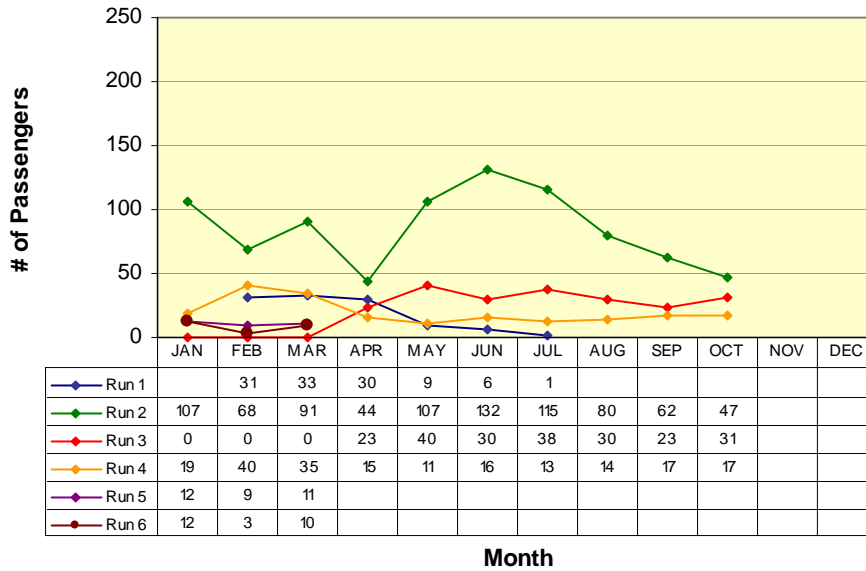
RUN 4:
Raley's 2:07pm
Govt Center 3:00pm

RUN 5:
Raley's 5:07pm
Govt Center 5:45pm

ROUTE 3

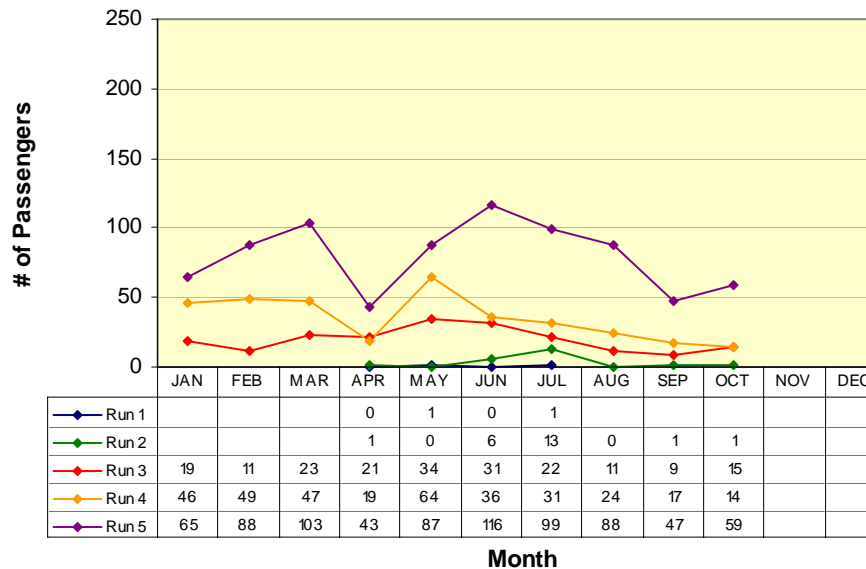
West Point / Glencoe / Mokelumne Hill / San Andreas

Route 3(W) (West Point to San Andreas)



RUN 1:
Community Hall 6:00am
Govt Center 6:50am
RUN 2:
Community Hall 6:50am
Govt Center 7:40am
RUN 3:
Community Hall 11:00am
Govt Center 11:50am
RUN 4:
Community Hall 4:00pm
Govt Center 4:50pm

Route 3(E) (San Andreas to West Point)

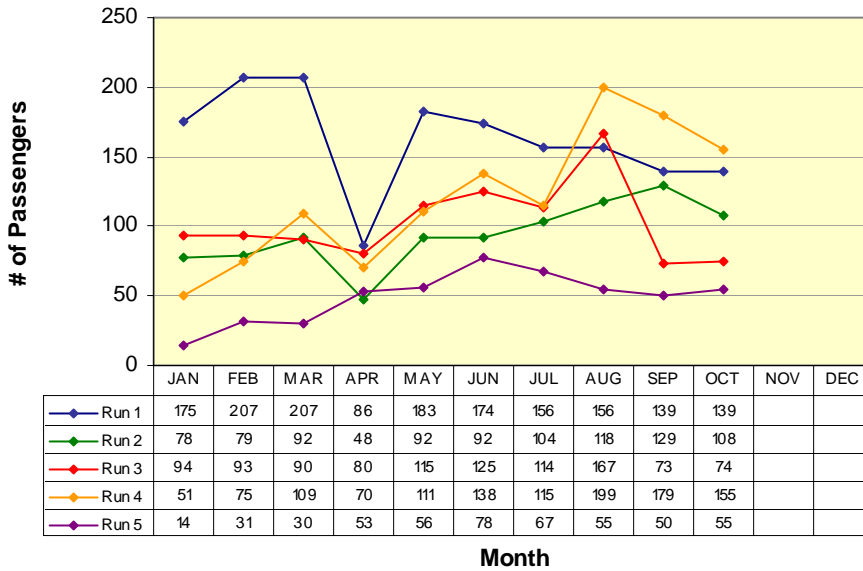


RUN 1:
Moke Hill STP 5:35am
Community Hall 6:00am
RUN 2:
Moke Hill STP 6:15am
Community Hall 6:50am
RUN 3:
Govt Center 10:00am
Community Hall 10:50am
RUN 4:
Govt Center 3:00pm
Community Hall 3:50pm
RUN 5:
Govt Center 5:20pm
Community Hall 6:10pm

ROUTE 4a

Arnold / Avery / Forest Meadows / Murphys / Angels Camp

Route 4a(W) (Arnold to Angels Camp)



RUN 1:
Post Office 6:15am
Save Mart 7:10am

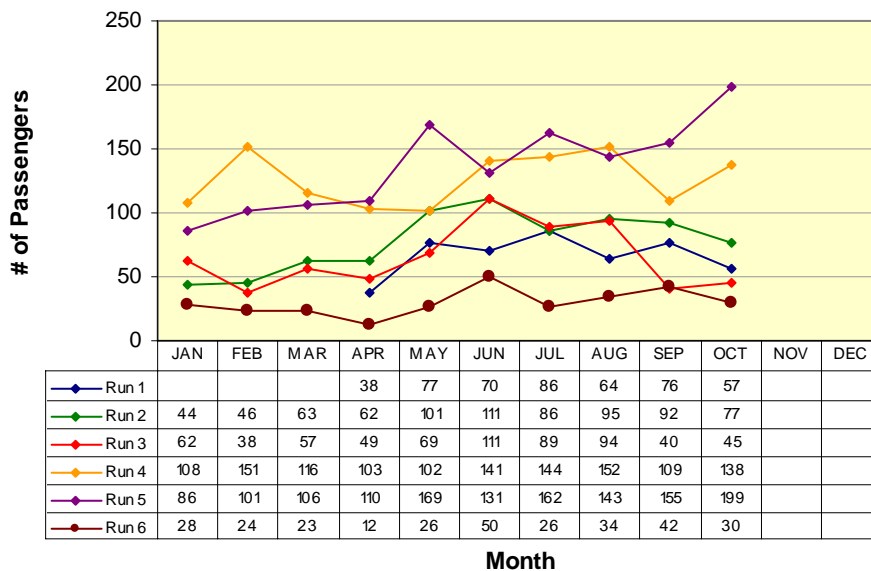
RUN 2:
Post Office 9:20am
Save Mart 10:00am

RUN 3:
Post Office 12:35pm
Save Mart 1:13pm

RUN 4:
Post Office 3:20pm
Save Mart 4:00pm

RUN 5:
Post Office 6:25pm
Save Mart 7:04pm

Route 4a(E) (Angels Camp to Arnold)



RUN 1:
Save Mart 5:44am
Post Office 6:15am

RUN 2:
Save Mart 8:35am
Post Office 9:15am

RUN 3:
Save Mart 11:25am
Post Office 12:05pm

RUN 4:
Save Mart 2:37pm
Post Office 3:17pm

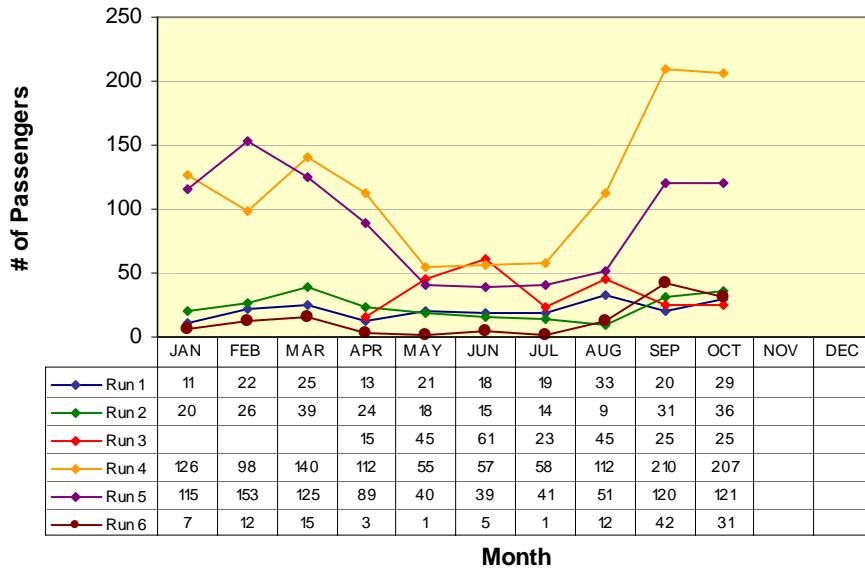
RUN 5:
Save Mart 5:35pm
Post Office 6:15pm

RUN 6:
Save Mart 9:47pm
Post Office 10:27pm

Route 4b

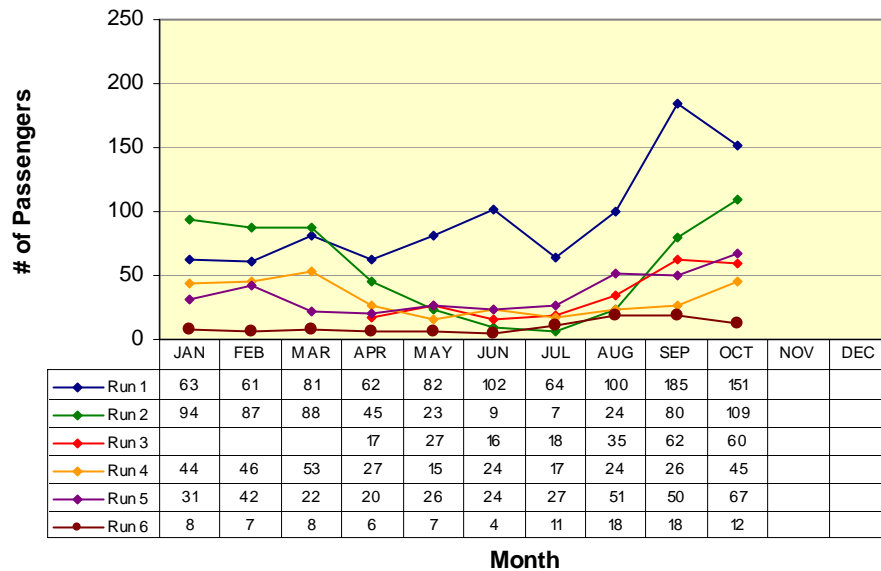
Angels Camp / Calaveras Center / Columbia College

Route 4b(N) (Columbia College to Angels Camp)



RUN 1:	
Oak Pavilion	7:58am
Save Mart	8:35am
RUN 2:	
Oak Pavilion	10:18am
Save Mart	11:00am
RUN 3:	
Oak Pavilion	10:48am
Save Mart	11:25am
RUN 4:	
Oak Pavilion	2:00pm
Save Mart	2:37pm
RUN 5:	
Oak Pavilion	5:00pm
Save Mart	5:35pm
RUN 6:	
Oak Pavilion	9:10pm
Save Mart	9:47pm

Route 4b(S) (Angels Camp to Columbia College)

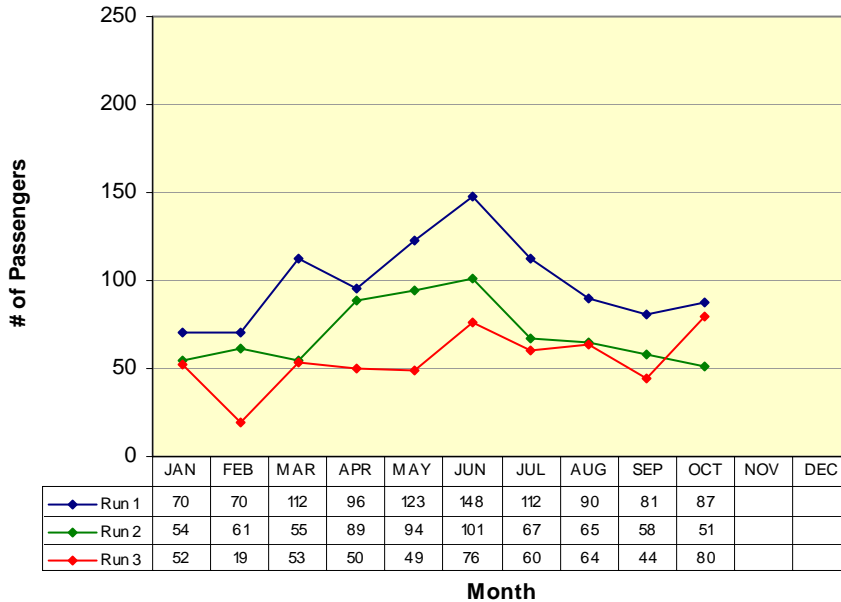


RUN 1:	
Save Mart	7:10am
Oak Pavilion	7:50am
RUN 2:	
Save Mart	9:30am
Oak Pavilion	10:10am
RUN 3:	
Save Mart	10:00am
Oak Pavilion	10:42am
RUN 4:	
Save Mart	1:13pm
Oak Pavilion	1:55pm
RUN 5:	
Save Mart	4:00pm
Oak Pavilion	4:42pm
RUN 6:	
Save Mart	8:20pm
Oak Pavilion	9:02pm

Lodi

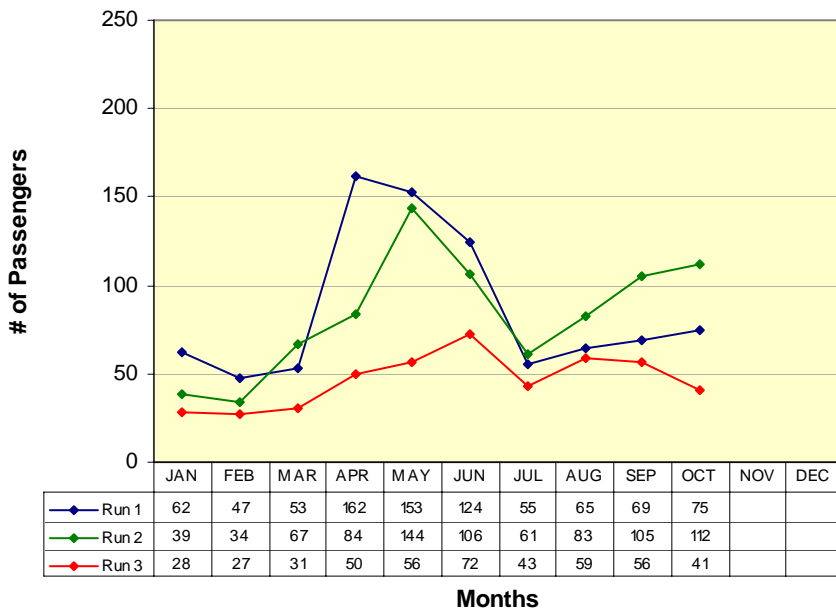
San Andreas / Valley Springs / Wallace / Clements / Lockeford / Victor / Lodi

San Andreas to Lodi (W)



RUN 1:	Govt Center	9:20am
	Lodi Station	10:15am
RUN 2:	Govt Center	12:20pm
	Lodi Station	1:15pm
RUN 3:	Govt Center	4:20pm
	Lodi Station	5:15pm

Lodi to San Andreas (E)



RUN 1:	Lodi Station	10:30am
	Govt Center	11:38am
RUN 2:	Lodi Station	1:30pm
	Govt Center	2:40pm
RUN 3:	Lodi Station	6:00pm
	Govt Center	7:08pm

VI. Vehicles Report

<i>Vehicle #</i>	<i>End Miles</i>	<i>Miles this Month</i>	<i>Miles YTD</i>	<i>Fuel Mileage</i>	<i>Breakdown Frequency</i>	<i>Repair Costs</i>	<i>Major Components Repaired / Replaced</i>
Bus 48	327514	2064	8184	8.6	4,269		
Bus 50	369596	5303	9465	9.2	14,537		
Bus 51	356082	1418	1795	9.0	5,757		
Bus 52	262689	437	437	5.1	38	\$1,921.28	Transmission
						\$1,428.98	Parking Brake
Bus 53	407664	3522	7430	11.6	2,584		
Bus 54	214612	4613	9124	6.6	24,845		
Bus 55	179581	4756	8601	8.9	4,178		
Bus 56	113850	6536	11776	9.6	1,880	\$139.97	Center Carrier Bearing
Bus 57	130203	8763	13450	9.6	23,898		

VII. Service Disruption Summary

<i>DATE</i>	<i>SCHED. TIME</i>	<i>ROUTE</i>	<i>BUS #</i>	<i>LOCATION</i>	<i>REASON</i>	<i>MINUTES DELAYED</i>
2-Oct	16:00	4	51	Save Mart	Deviations	23
2-Oct	16:00	Lodi	57	Save Mart	Deviations	23
6-Oct	16:00	4	51	Save Mart	Deviations	16
6-Oct	16:00	Lodi	57	Save Mart	Deviations	16
19-Oct	16:00	4	54	Save Mart	Deviations	30
19-Oct	16:00	Lodi	57	Save Mart	Deviations	20
28-Oct	16:00	4	51	Save Mart	Deviations	20
28-Oct	16:00	Lodi	57	Save Mart	Deviations	20

VIII. Fleet Maintenance Report

Calaveras Transit

Fleet Maintenance Report for the Month of

October-06

Identified Concern	Bus	Date Filed	Action Taken	Date Reconsiled	Completed By
Parking Brake and Fuel Gauge NonOP	52	27-Sep	Parking Brake replaced and fuel gauge repaired	17-Oct	Elk Grove Ford
Bus Would Not Start	51	2-Oct	Repaired power wire	3-Oct	SM
Bus Would Not Move	52	16-Oct	Replaced Transmission	20-Oct	Elk Grove Ford
Parking Brake Hold	52	24-Oct	Adjusted	24-Oct	SM
Drive Train Vibration	56	26-Oct	Tested, couldn't duplicate problem	26-Oct	SM
Passenger Step Lights Out	57	24-Oct	Replaced broken switch in door	26-Oct	SM
Wheel Bearing Noise	53	27-Oct	Tested, couldn't duplicate problem	29-Oct	SM

Wheelchair Lift Usage

For the month of: October 2006

Date	Vehicle #	Pick up Point	Drop off Point	PU Time	DO Time
10/2	54	Raleys	Mark Twain Conv. Hosp.	1025	1100
10/2	53	Mark Twain Conv. Hosp.	Raleys	1340	1410
10/3	53	Raleys	Mark Twain Conv. Hosp.	1033	1100
10/3	50	Mark Twain Conv. Hosp.	Raleys	1333	1407
10/4	53	Raleys	Mark Twain Conv. Hosp.	1036	1100
10/4	54	Mark Twain Conv. Hosp.	Raleys	1339	1405
10/5	54	Raleys	Mark Twain Conv. Hosp.	1030	1100
10/5	53	Mark Twain Conv. Hosp.	Raleys	1330	1400
10/6	54	Raleys	Mark Twain Conv. Hosp.	1031	1100
10/6	53	Mark Twain Conv. Hosp.	Raleys	1341	1410
10/6	50	Moke Hill STP	S.A. Post Office	1733	1745
10/10	50	Raleys	Mark Twain Conv. Hosp.	1031	1105
10/10	56	Mark Twain Conv. Hosp.	Raleys	1331	1407
10/12	50	Raleys	Mark Twain Conv. Hosp.	1026	1100
10/12	56	Mark Twain Conv. Hosp.	Raleys	1330	1401
10/13	56	Coppello Apts.	Government Center	1215	1230
10/13	57	Government Center	Valley Springs	1243	1305
10/13	57	Valley Springs	Coppello Apts.	1440	1513
10/18	52	Coppello Apts.	Save Mart	1202	1216
10/18	48	Save Mart	Coppello Apts.	1618	1631
10/19	57	Columbia College	San Andreas	1026	1124
10/19	52	Raleys	Mark Twain Conv. Hosp.	1030	1105
10/19	53	Mark Twain Conv. Hosp.	Raleys	1336	1411
10/23	51	Raleys	Mark Twain Conv. Hosp.	1025	1101
10/23	56	Mark Twain Conv. Hosp.	Raleys	1332	1407
10/24	52	Raleys	Mark Twain Conv. Hosp.	1030	1100
10/24	56	S.A. Post Office	Senior Center	1148	1158
10/24	50	Senior Center	High School St.	1316	1330
10/24	56	Mark Twain Conv. Hosp.	Raleys	1327	1402
10/25	50	Raleys	Mark Twain Conv. Hosp.	1030	1100
10/25	56	Mark Twain Conv. Hosp.	Raleys	1332	1410
10/30	52	Raleys	Mark Twain Conv. Hosp.	1030	1107
10/30	56	Mark Twain Conv. Hosp.	Raleys	1332	1410
10/31	52	Raleys	Mark Twain Conv. Hosp.	1031	1100
10/31	54	S.A. Post Office	Senior Center	1132	1205
10/31	50	Senior Center	High School St.	1310	1330
10/31	54	Mark Twain Conv. Hosp.	Raleys	1334	1407