



# Monthly Operations Report



MV Transportation, Inc.

# I. Project Manager's Summary

**From:** Annie Self, Calaveras Transit General Manager  
MV Transportation, Inc.  
750 Industrial Way - P. O. Box 1385  
San Andreas, Ca 95249  
Phone (209) 754-4450  
Fax (209) 754-9086

**To:** Calaveras County  
C/o Nathan Atherstone  
Transit Manager, Public Works  
891 Mountain Ranch Road  
San Andreas, CA 95249

## **On time performance checks:**

On time performances were checked throughout the entire month of August. There were a total of 136 runs checked. On time performance was 95 percent.

## **Trends:**

When comparing July and August we found there were 961 more passenger trips in August than in July.

Route 1 had 1,141 passenger trips in July, and had 1,651 passenger trips in August. There was an increase of 510 passenger trips on Route 1 in July.

Route 2 had 365 passenger trips in July and 532 passenger trips in August. There was an increase of 167 passenger trips on Route 2 in August.

Route 3 had 333 passenger trips in July and 247 passenger trips in August. There was a decrease of 86 passenger trips on Route 3 in August.

Route 4 had 1,449 passenger trips in July and 1,791 passenger trips in August. There was an increase of 342 passenger trips on Route 4 in August.

The Lodi route had 398 passenger trips in July and 426 passenger trips in August. There was an increase of 28 passenger trips on the Lodi Route in August.

## **Comments/Compliments/Complaints:**

There were a total of 6 passenger complaints, 0 compliments, and 0 comments in the month of August.

2 complaints were regarding customer service, 2 complaints regarding drivers leaving stops early, and 1 regarding driver speeding. All complaints were addressed with the employees responsible and appropriate disciplinary action was incurred.

**Safety and Training:**

August's safety meeting focused on Customer Service. At the safety meeting the employees of Calaveras Transit were presented an award for meeting and exceeding their safety goal for the previous 12 months. Congratulations and keep it safe.

**Route Cancellations:**

August 18, 2006: Route 3 from 10:00am to 11:50am. Loop between San Andreas and West Point was cancelled due to mechanical failure on bus.

August 21, 2006: Route 3 from 10:00am to 11:50am. Loop between San Andreas and West Point was cancelled due to mechanical failure on bus.

August 22, 2006: Route 3 from 10:00am to 11:50am. Loop between San Andreas and West Point was cancelled due to mechanical failure on bus.

August 25, 2006: Route 3 from 10:00am to 11:50am. Loop between San Andreas and West Point was cancelled due to mechanical failure on bus.

August 30, 2006: Route 3 from 10:00am to 11:50am. Loop between San Andreas and West Point was cancelled due to mechanical failure on bus.

These cancellations resulted in a loss of 10 service hours for the month of August.

**Overview:**

August was a better month for Calaveras Transit. Ridership trends have begun to increase, and there were no incidents this month. We look forward to having an even better month in September.

# II. Billing Summary

P.O. Box 39000, Dept. 33135  
 San Francisco, CA 94139-3135

## INVOICE

### Customer

Number: 5901 Name: County of Calaveras  
 Address: 891 Mountain Ranch Rd.  
 City: San Andreas State: CA ZIP: 95249  
 Contact: Nathan Atherstone Transit and Transportation Planner

9/1/2006  
 Terms NET 30  
 Due Date 10/1/2006

Qty	Description	Account code	Unit Price	TOTAL
1	<b>Fixed Fee August 2006</b>	4080	\$12,381.58	\$12,381.58
1172.42	<b>Variable August 2006</b>	4080	\$30.43	\$35,676.74
Subtotal				
28.98	BVMF 8/2, 8/4, 8/9, 8/10, 8/11	4080	\$30.43	\$881.86
6.17	BVMF OT 8/12	4080	\$38.90	\$240.01
Subtotal				
1207.57	Hours Sub Total			
1	Progress Payment 15th of the Month	4080	(\$18,051.94)	-\$18,051.94
1	Progress Payment End of Month	4080	(\$18,051.94)	-\$18,051.94
SubTotal				\$13,076.32
<b>TOTAL</b>				<b>\$13,076.32</b>



### III. Deposit Summary

#### Current Month Deposit Summary

Date	Collection Period	Tickets	DAR	Fixed Rt	Charter	Total
8/4	8/1 - 8/3	\$30.00		\$654.00		\$684.00
8/9	8/4, 8/7 - 8/8	\$1,099.00		\$459.00		\$1,558.00
8/15	8/9 - 8/12, 8/14	\$79.50		\$560.00		\$639.50
8/21	8/15 - 8/18	\$29.00		\$463.50		\$492.50
8/28	8/21 - 8/25	\$65.00		\$1,238.00		\$1,303.00
8/30	8/28 - 8/29	\$54.00		\$224.00		\$278.00
9/5	8/30 - 8/31	\$58.00		\$305.50		\$363.50
						\$0.00
						\$0.00
						\$0.00
						\$0.00
						\$0.00
						\$0.00
		\$1,414.50	\$0.00	\$3,904.00	\$0.00	\$5,318.50

**Notes:**

September 5th deposit for August Vault Count

Matches county deposit records?



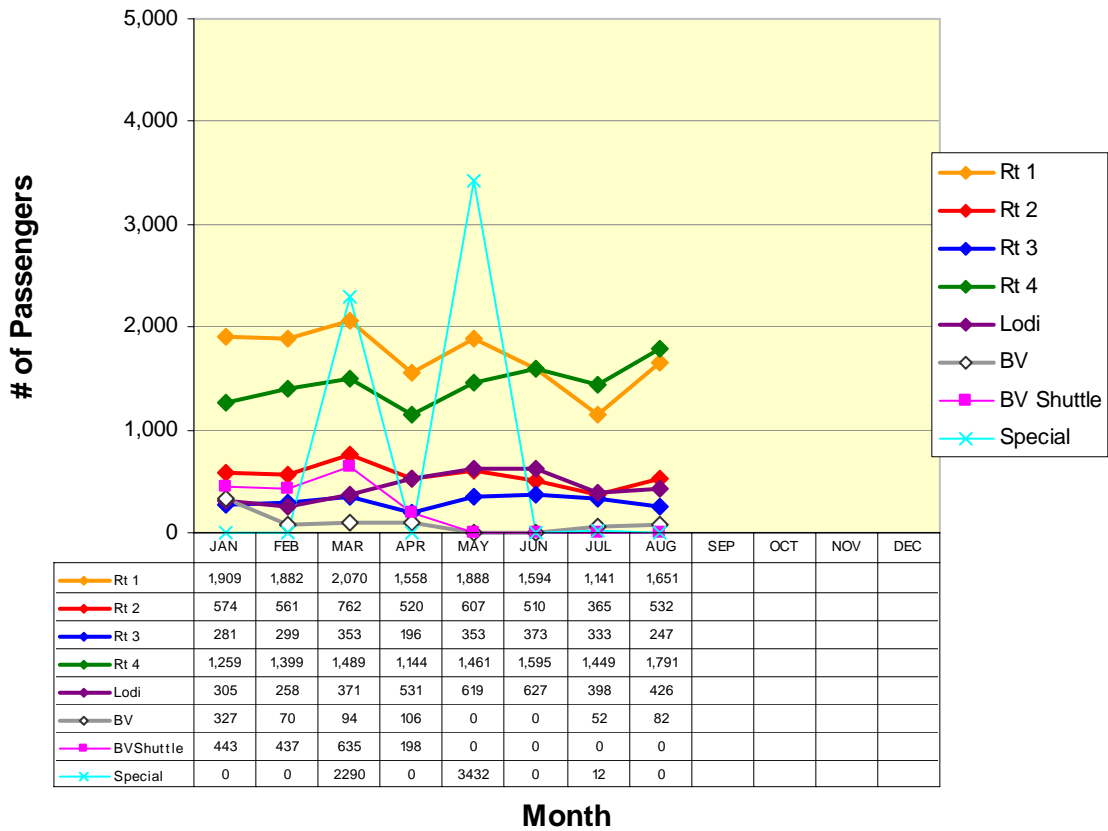
## IV. Current Month Operational Statistics

	Fixed Rt.	Lodi	Special	Bear Valley	BV Shuttle	Total
Ridership	4221	426	0	82	0	4,729
Vehicle Hours	1164.60	159.75	0.00	41.12	0.00	1,365.47
Vehicle Service Hours	1017.92	154.50	0.00	28.98	0.00	1,201.40
Operating Days	23	23	0	6	0	24
Vehicle Service Miles	27,352	5,226	0	568	0	33,146

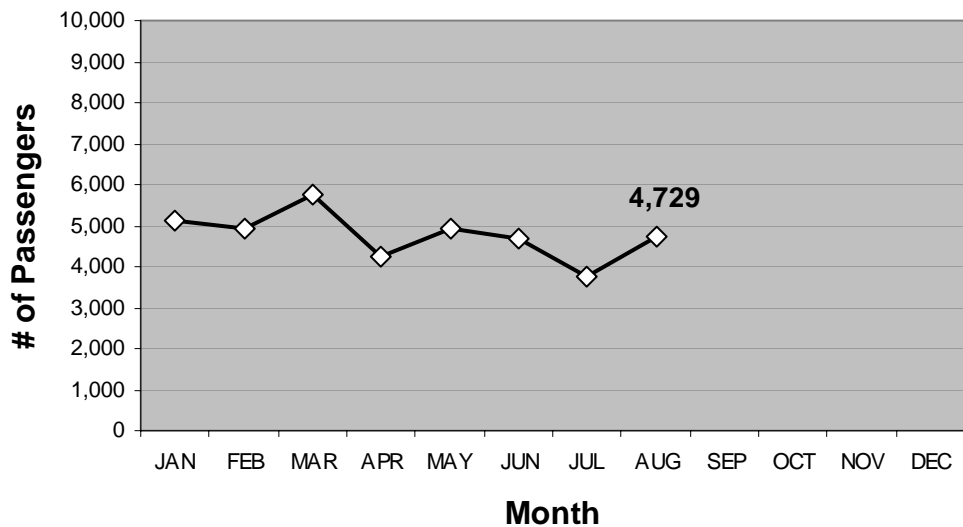
	Rt 1	Rt 2	Rt 3	Rt 4	LODI	All
Cash Regular	532	111	120	752	136	1,651
Cash Discount	234	122	47	381	105	889
Pass Regular	35	29	1	7	5	77
Pass Discount	75	14	0	95	58	242
Ticket Regular	149	40	27	43	25	284
Ticket Discount	118	101	2	99	14	334
Transfer	348	84	29	215	45	721
Promo	0	0	0	0	0	0
Free	76	18	7	134	26	261
Day Pass	84	13	14	65	12	188
Total Passenger #	1,651	532	247	1,791	426	4,647

# V. Ridership Trends

## Calaveras Transit Ridership



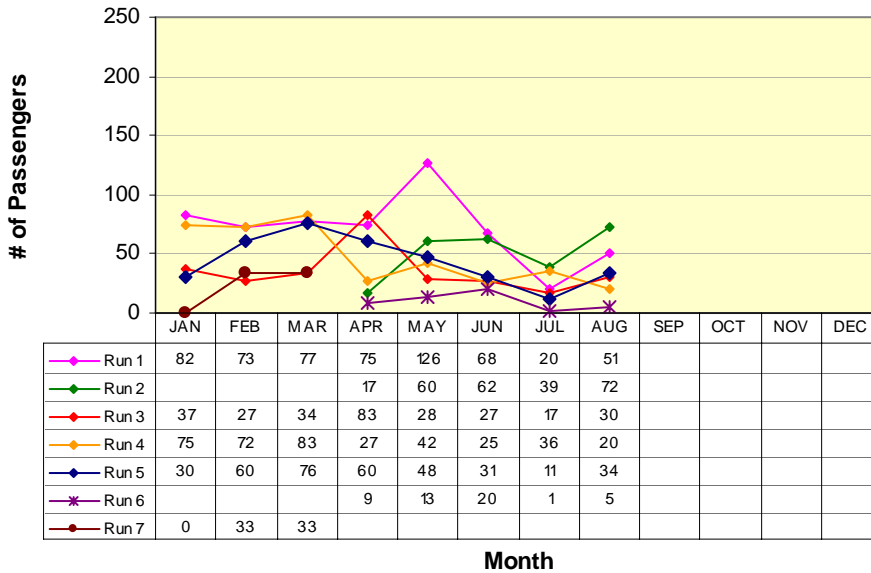
## Fixed Route Ridership



# ROUTE 1a

Rancho Calaveras / Valley Springs / San Andreas

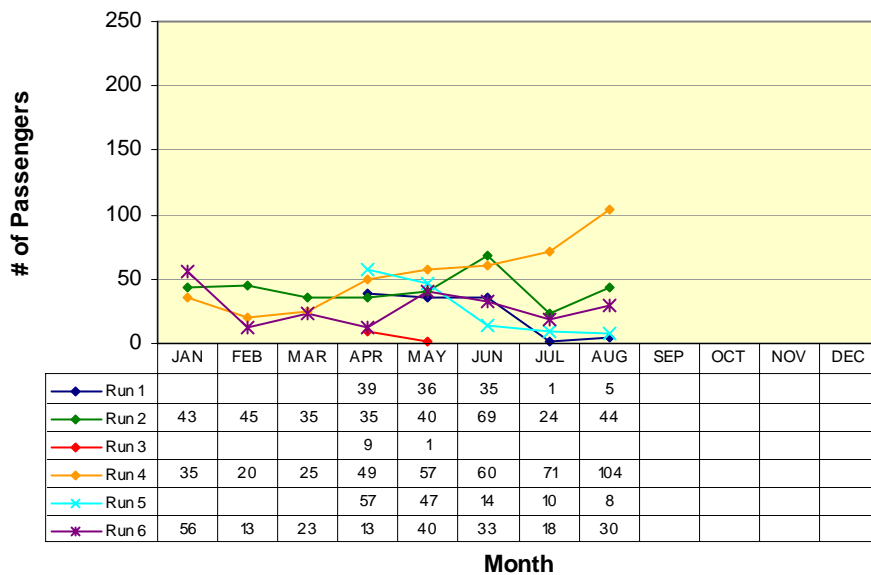
## Route 1a(E) (Rancho Calaveras to San Andreas\*)



- RUN 1:**  
La Contenta (S) 7:00am  
Govt Center 7:40am
- RUN 2:**  
Valley Oak Center 7:57am  
Govt Center 8:16am
- RUN 3:**  
La Contenta (N) 8:22am  
Govt Center 9:11am
- RUN 4:**  
La Contenta (N) 11:54am  
Govt Center 12:19pm
- RUN 5:**  
Valley Oak Center 5:00pm  
Govt Center 5:20pm
- RUN 6:**  
La Contenta (N) 5:49pm  
Govt Center 6:14pm

\*Does not include Lodi Service runs

## Route 1a(W) (Government Center to Rancho Calaveras\*)



- RUN 1:**  
Govt Center 6:50am  
La Contenta (N) 8:22am
- RUN 2:**  
Govt Center 7:40am  
Valley Oak Center 7:56am
- RUN 3: (X)**  
Govt Center 3:45pm  
Valley Oak Center 5:00pm
- RUN 4:**  
Govt Center 11:20am  
La Contenta (N) 11:54am
- RUN 5:**  
Govt Center 1:00pm  
Valley Oak Center 1:17pm
- RUN 6:**  
Govt Center 5:15pm  
La Contenta (N) 5:49pm

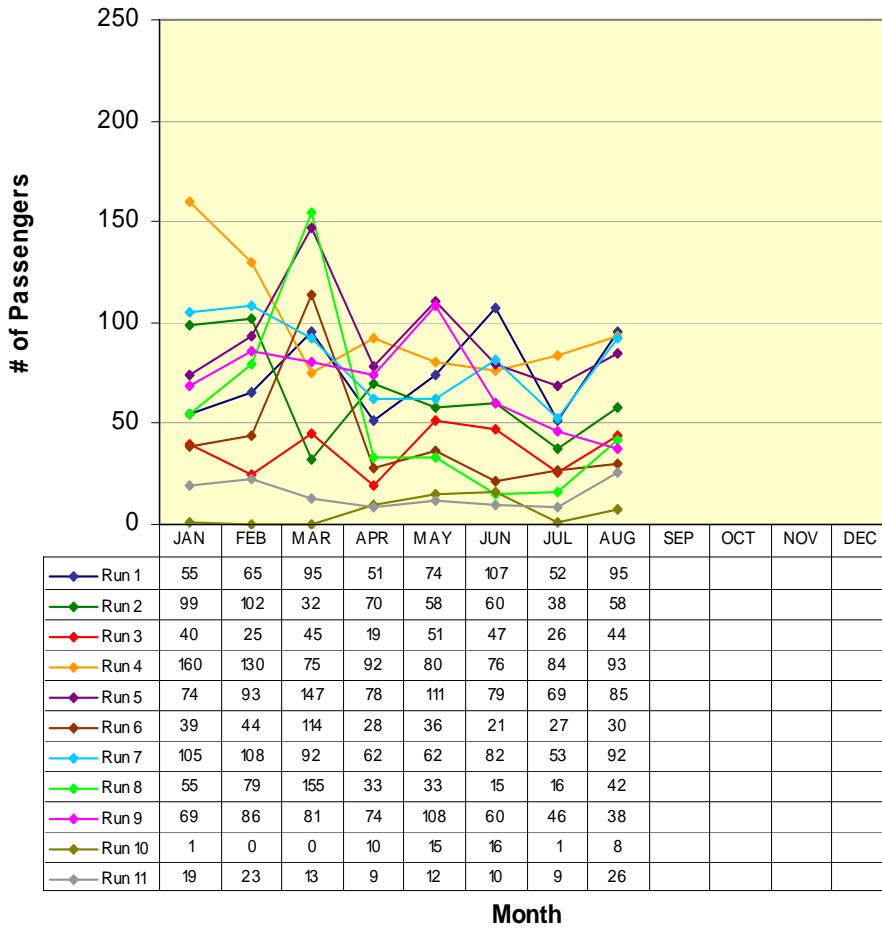
(X) Former Milton Run

\* Does not include Lodi Service runs

# ROUTE 1b

San Andreas / Angels Camp

## Route 1b(S) (San Andreas to Angels Camp)



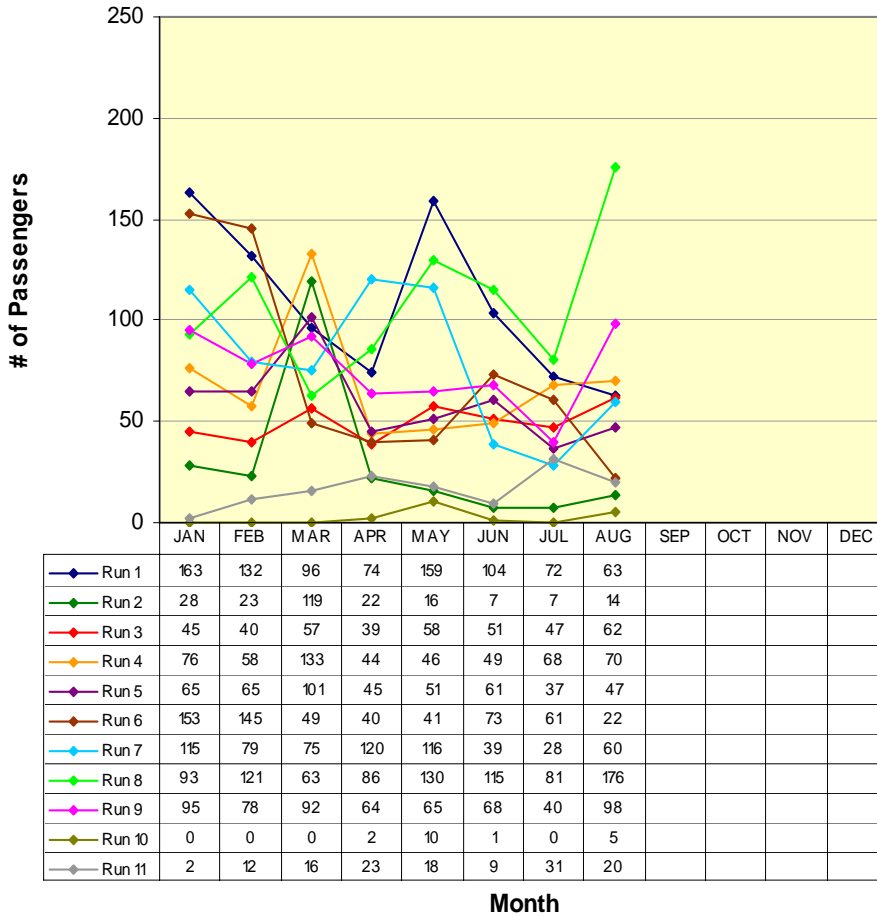
<b>RUN 1:</b>	S.A. Post Office	6:45am
	Visitor's Center	7:10am
<b>RUN 2:</b>	Govt Center	7:40am
	Visitor's Center	8:00am
<b>RUN 3:</b>	Govt Center	8:16am
	Visitor's Center	8:34am
<b>RUN 4:</b>	Govt Center	9:11am
	Visitor's Center	9:30am
<b>RUN 5:</b>	Govt Center	11:38am
	Visitor's Center	12:00pm
<b>RUN 6:</b>	Govt Center	12:19pm
	Visitor's Center	12:40pm
<b>RUN 7:</b>	Govt Center	2:40pm
	Visitor's Center	3:00pm
<b>RUN 8:</b>	Govt Center	3:20pm
	Visitor's Center	4:00pm
<b>RUN 9:</b>	Govt Center	5:15pm
	Visitor's Center	5:35pm
<b>RUN 10:</b>	Govt Center	6:14pm
	Visitor's Center	6:35pm
<b>RUN 11:</b>	Govt Center	7:08pm
	Visitor's Center	7:30pm

*\*Not all runs end in same location*

# ROUTE 1b

San Andreas / Angels Camp

## Route 1b(N) (Angels Camp to San Andreas)

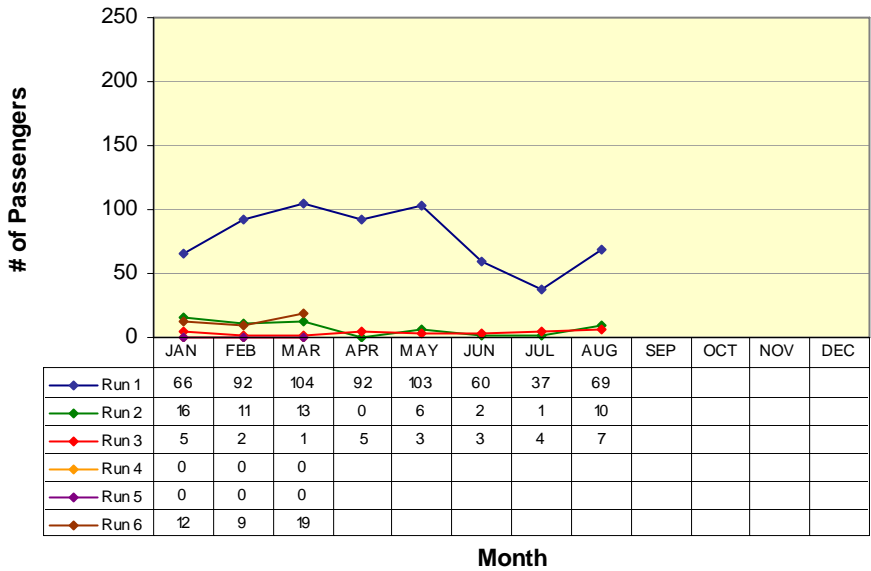


<b>RUN 1:</b>	
Save Mart	7:10am
Govt Center	7:40am
<b>RUN 2:</b>	
Save Mart	8:00am
H.S. St. / Hwy. 49	8:24am
<b>RUN 3:</b>	
Save Mart	9:00am
Govt Center	9:20am
<b>RUN 4:</b>	
Save Mart	11:00am
Govt Center	11:20am
<b>RUN 5:</b>	
Save Mart	12:00pm
Govt Center	12:20pm
<b>RUN 6:</b>	
Save Mart	12:40pm
Govt Center	1:00pm
<b>RUN 7:</b>	
Save Mart	3:00pm
Govt Center	3:20pm
<b>RUN 8:</b>	
Save Mart	4:00pm
Govt Center	4:20pm
<b>RUN 9:</b>	
Save Mart	5:35pm
H.S. St. / Hwy. 49	5:59pm
<b>RUN 10:</b>	
Save Mart	6:35pm
H.S. St. / Hwy. 49	6:59pm
<b>RUN 11:</b>	
Save Mart	7:30pm
H.S. St. / Hwy. 49	7:54pm

# ROUTE 2a

Railroad Flat / Mountain Ranch / San Andreas

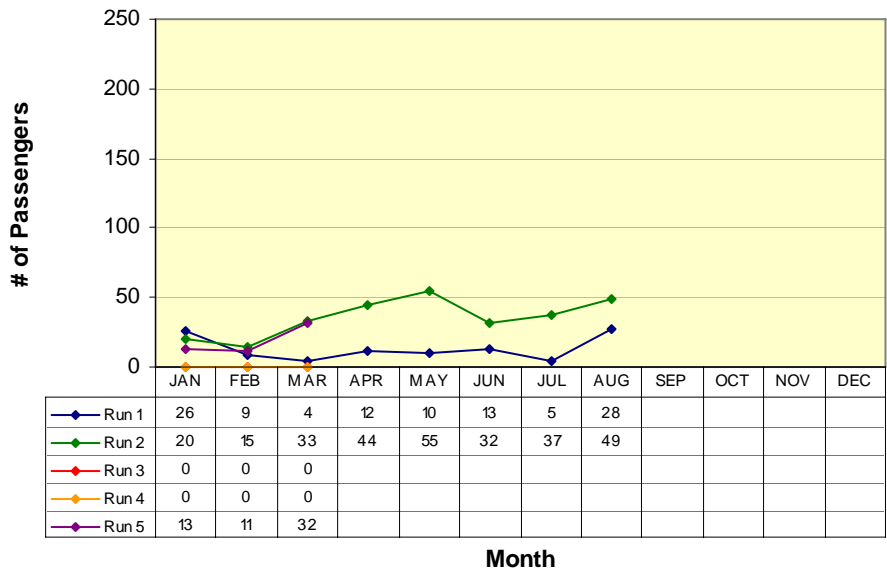
## Route 2a(W) (Railroad Flat/Mtn Ranch to San Andreas\*)



**RUN 1:**  
Community Center 7:00am  
Govt Center 7:40am  
**RUN 2:**  
Blunder Inn 9:10am  
Govt Center 9:23am  
**RUN 3:**  
Community Center 6:30pm  
Govt Center 7:00pm

*\*Not all runs begin in same location*

## Route 2a(E) (San Andreas to Mtn Ranch/Railroad Flat\*)



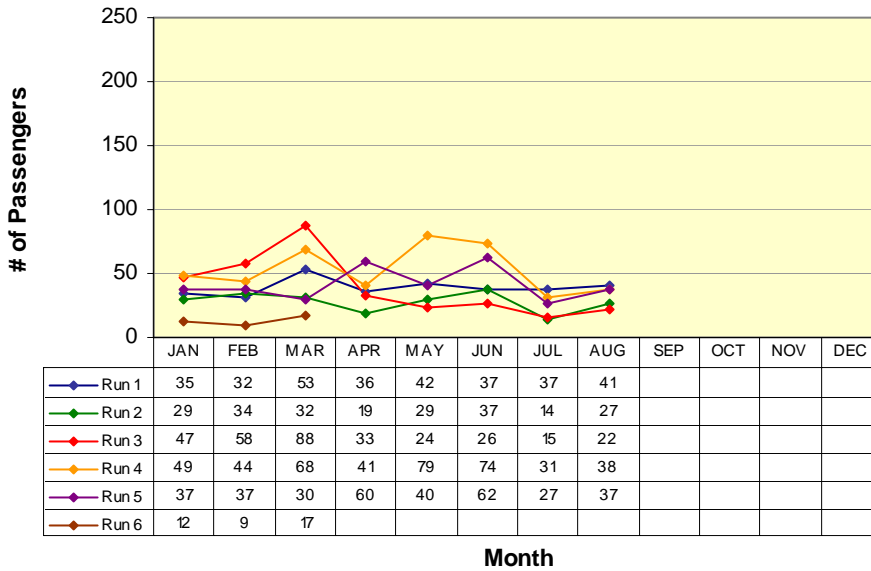
**RUN 1:**  
Govt Center 8:48am  
Blunder Inn 9:01am  
**RUN 2:**  
Govt Center 5:55pm  
Community Hall 6:30pm

*\*Not all runs end in same location*

# ROUTE 2b

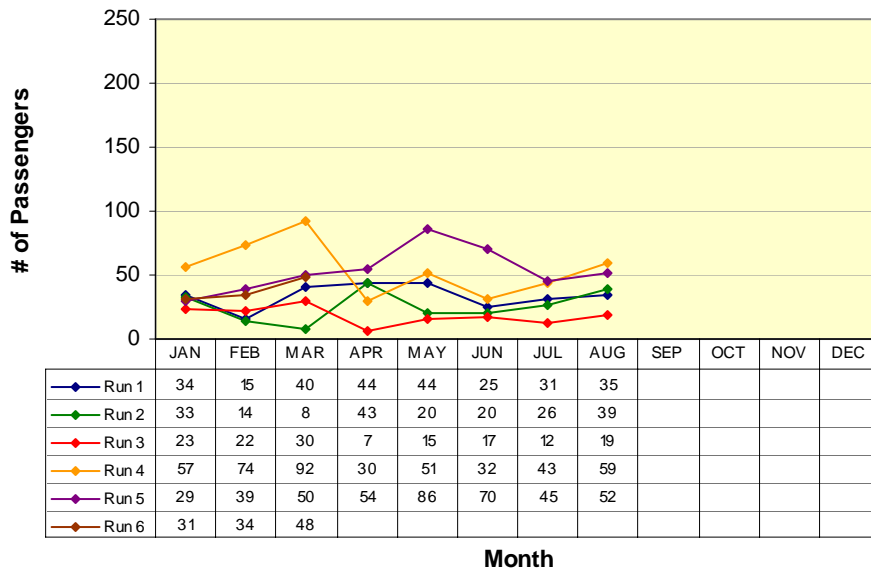
San Andreas / Mokelumne Hill / Jackson

## Route 2b(N) (San Andreas to Jackson)



<b>RUN 1:</b>	
Govt Center	7:40am
Raley's	8:13am
<b>RUN 2:</b>	
Govt Center	9:23am
Raley's	9:53am
<b>RUN 3:</b>	
Govt Center	11:00am
Raley's	11:33am
<b>RUN 4:</b>	
Govt Center	1:30pm
Raley's	2:03pm
<b>RUN 5:</b>	
Govt Center	4:10pm
Raley's	4:44pm

## Route 2b(S) (Jackson to San Andreas)

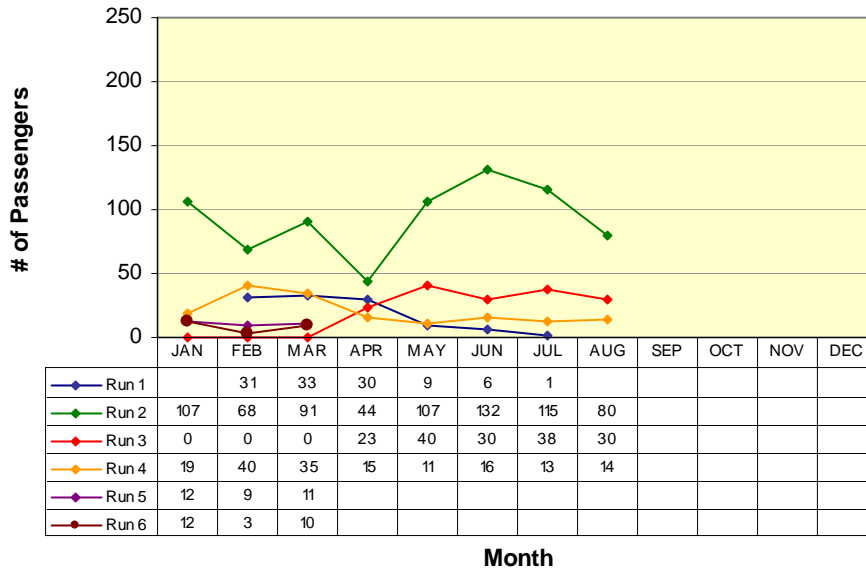


<b>RUN 1:</b>	
Raley's	8:18am
Govt Center	8:48am
<b>RUN 2:</b>	
Raley's	10:23am
Govt Center	10:53am
<b>RUN 3:</b>	
Raley's	11:40am
Govt Center	12:10pm
<b>RUN 4:</b>	
Raley's	2:07pm
Govt Center	3:00pm
<b>RUN 5:</b>	
Raley's	5:07pm
Govt Center	5:45pm

# ROUTE 3

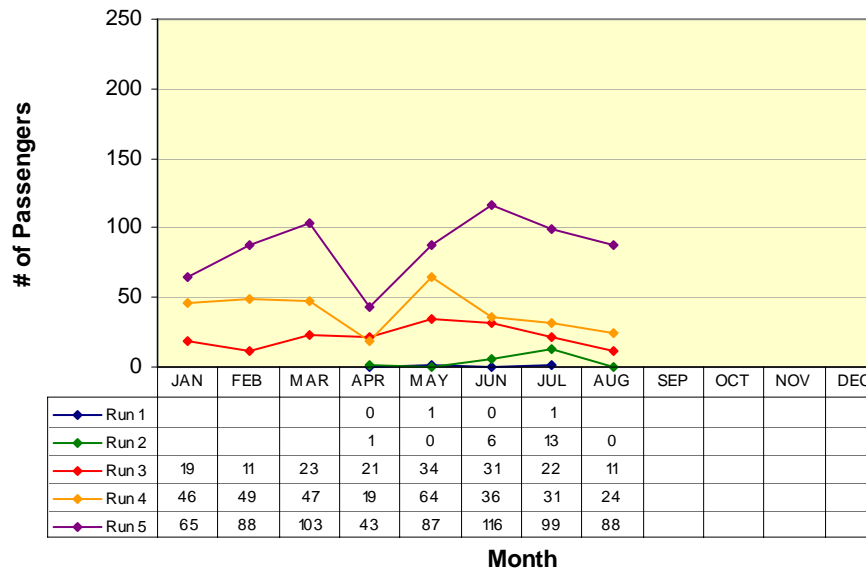
West Point / Glencoe / Mokelumne Hill / San Andreas

## Route 3(W) (West Point to San Andreas)



**RUN 1:**  
Community Hall 6:00am  
Govt Center 6:50am  
**RUN 2:**  
Community Hall 6:50am  
Govt Center 7:40am  
**RUN 3:**  
Community Hall 11:00am  
Govt Center 11:50am  
**RUN 4:**  
Community Hall 4:00pm  
Govt Center 4:50pm

## Route 3(E) (San Andreas to West Point)

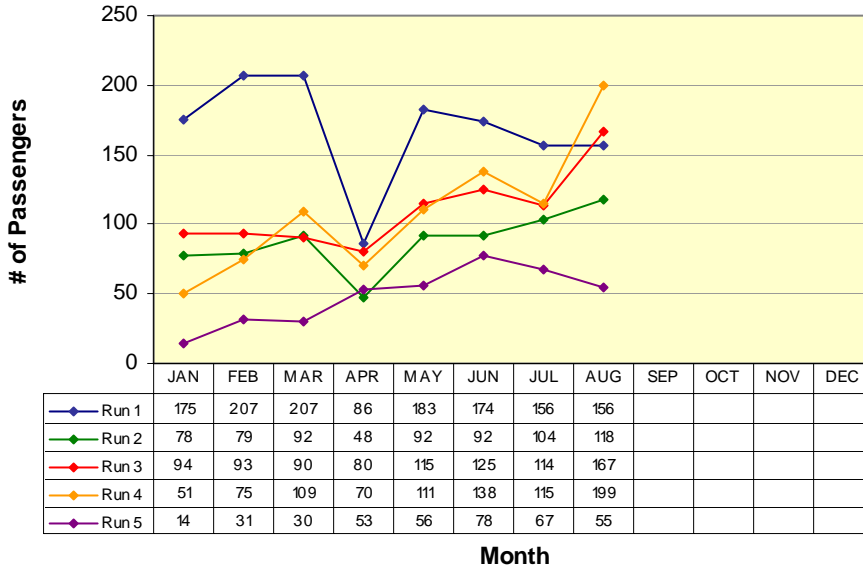


**RUN 1:**  
Moke Hill STP 5:35am  
Community Hall 6:00am  
**RUN 2:**  
Moke Hill STP 6:15am  
Community Hall 6:50am  
**RUN 3:**  
Govt Center 10:00am  
Community Hall 10:50am  
**RUN 4:**  
Govt Center 3:00pm  
Community Hall 3:50pm  
**RUN 5:**  
Govt Center 5:20pm  
Community Hall 6:10pm

# ROUTE 4a

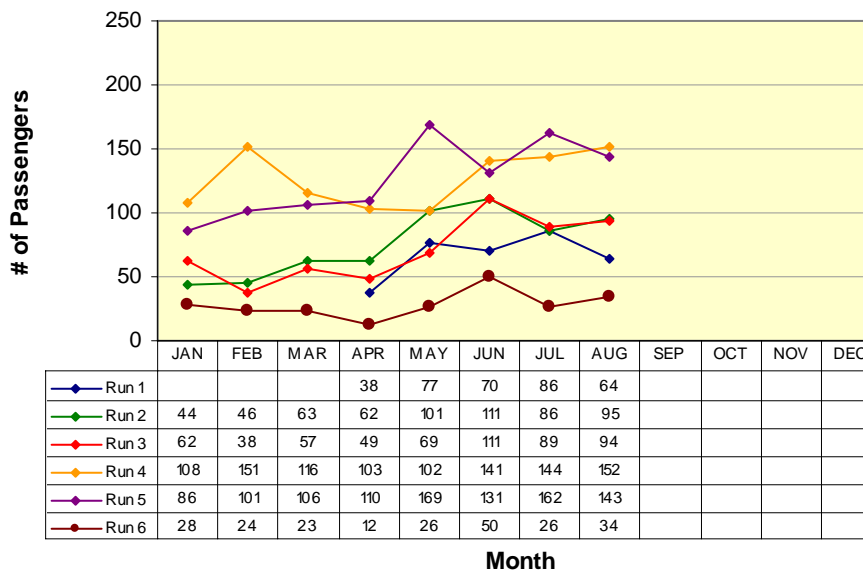
Arnold / Avery / Forest Meadows / Murphys / Angels Camp

## Route 4a(W) (Arnold to Angels Camp)



<b>RUN 1:</b>	
Post Office	6:15am
Save Mart	7:10am
<b>RUN 2:</b>	
Post Office	9:20am
Save Mart	10:00am
<b>RUN 3:</b>	
Post Office	12:35pm
Save Mart	1:13pm
<b>RUN 4:</b>	
Post Office	3:20pm
Save Mart	4:00pm
<b>RUN 5:</b>	
Post Office	6:25pm
Save Mart	7:04pm

## Route 4a(E) (Angels Camp to Arnold)

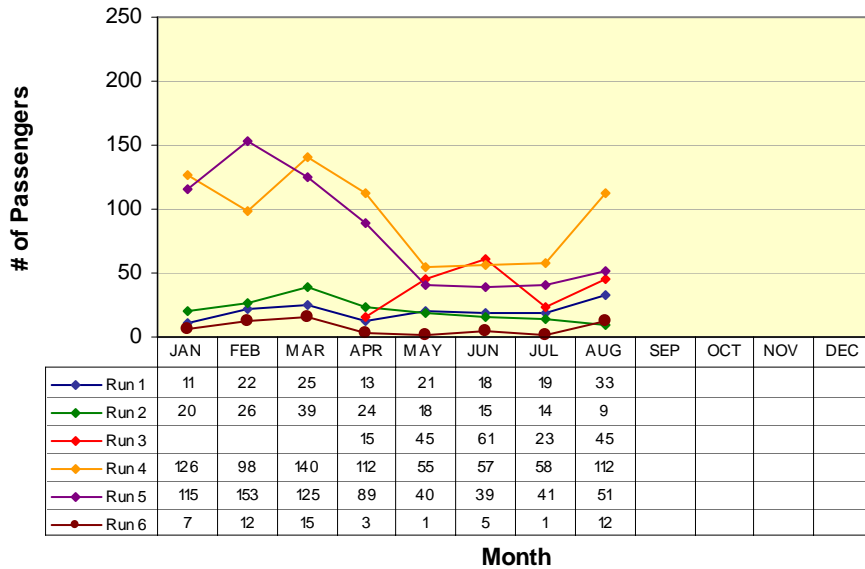


<b>RUN 1:</b>	
Save Mart	5:44am
Post Office	6:15am
<b>RUN 2:</b>	
Save Mart	8:35am
Post Office	9:15am
<b>RUN 3:</b>	
Save Mart	11:25am
Post Office	12:05pm
<b>RUN 4:</b>	
Save Mart	2:37pm
Post Office	3:17pm
<b>RUN 5:</b>	
Save Mart	5:35pm
Post Office	6:15pm
<b>RUN 6:</b>	
Save Mart	9:47pm
Post Office	10:27pm

# Route 4b

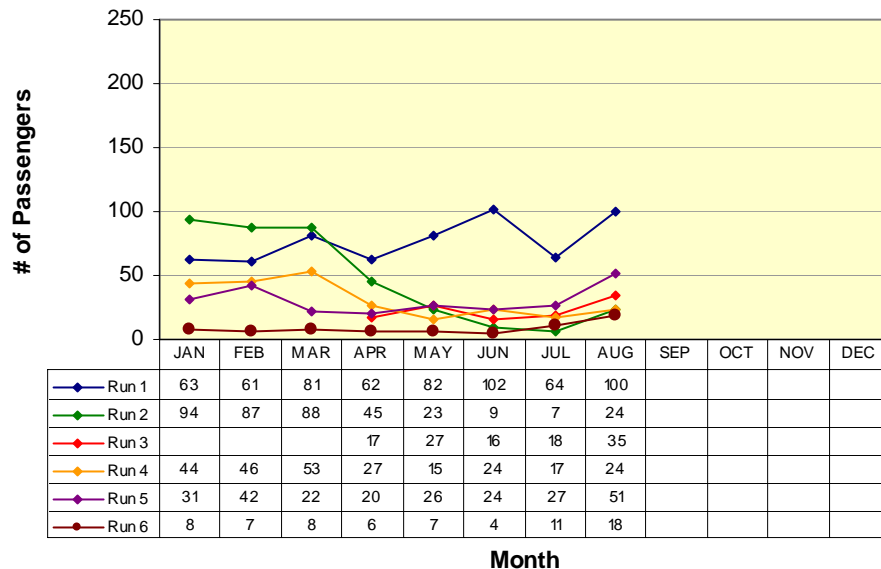
Angels Camp / Calaveras Center / Columbia College

## Route 4b(N) (Columbia College to Angels Camp)



<b>RUN 1:</b>	Oak Pavilion	7:58am
	Save Mart	8:35am
<b>RUN 2:</b>	Oak Pavilion	10:18am
	Save Mart	11:00am
<b>RUN 3:</b>	Oak Pavilion	10:48am
	Save Mart	11:25am
<b>RUN 4:</b>	Oak Pavilion	2:00pm
	Save Mart	2:37pm
<b>RUN 5:</b>	Oak Pavilion	5:00pm
	Save Mart	5:35pm
<b>RUN 6:</b>	Oak Pavilion	9:10pm
	Save Mart	9:47pm

## Route 4b(S) (Angels Camp to Columbia College)

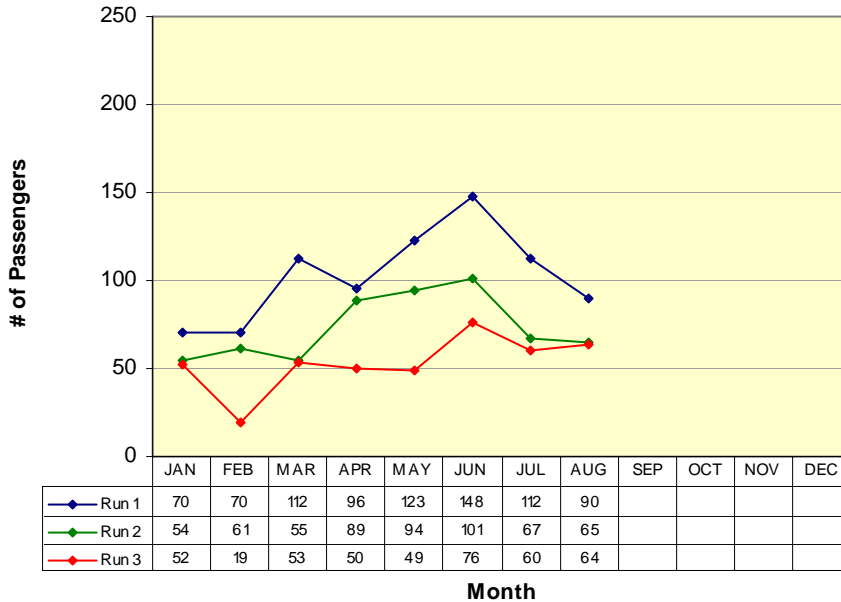


<b>RUN 1:</b>	Save Mart	7:10am
	Oak Pavilion	7:50am
<b>RUN 2:</b>	Save Mart	9:30am
	Oak Pavilion	10:10am
<b>RUN 3:</b>	Save Mart	10:00am
	Oak Pavilion	10:42am
<b>RUN 4:</b>	Save Mart	1:13pm
	Oak Pavilion	1:55pm
<b>RUN 5:</b>	Save Mart	4:00pm
	Oak Pavilion	4:42pm
<b>RUN 6:</b>	Save Mart	8:20pm
	Oak Pavilion	9:02pm

# Lodi

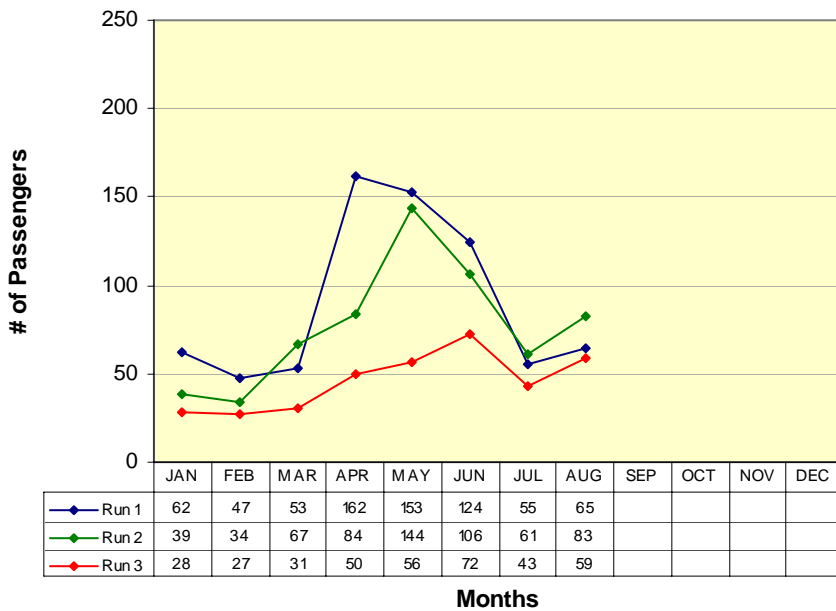
San Andreas / Valley Springs / Wallace / Clements / Lockeford / Victor / Lodi

## San Andreas to Lodi (W)



<b>RUN 1:</b>	Govt Center	9:20am
	Lodi Station	10:15am
<b>RUN 2:</b>	Govt Center	12:20pm
	Lodi Station	1:15pm
<b>RUN 3:</b>	Govt Center	4:20pm
	Lodi Station	5:15pm

## Lodi to San Andreas (E)



<b>RUN 1:</b>	Lodi Station	10:30am
	Govt Center	11:38am
<b>RUN 2:</b>	Lodi Station	1:30pm
	Govt Center	2:40pm
<b>RUN 3:</b>	Lodi Station	6:00pm
	Govt Center	7:08pm

# VI. Vehicles Report

Vehicle #	End Miles	Miles this Month	Miles YTD	Fuel Mileage	Breakdown Frequency	Repair Costs	Major Components Repaired / Replaced
<b>Bus 48</b>	323245	2064	8184	8.6	6,907		Smog Pump on order
<b>Bus 50</b>	363929	5303	9465	9.2	8,870		
<b>Bus 51</b>	350325	1418	1795	9.0	212	\$1,569.84	High Pressure Oil Line & AC Repaired / Transmission on order
<b>Bus 52</b>	256029	437	437	5.1	437		
<b>Bus 53</b>	399576	3522	7430	11.6	12,097		
<b>Bus 54</b>	203010	4613	9124	6.6	13,243		
<b>Bus 55</b>	175374	4756	8601	8.9	8,630		Electrical problem still open
<b>Bus 56</b>	104797	6536	11776	9.6	13,168		
<b>Bus 57</b>	117659	8763	13450	9.6	11,354		

## VII. Service Disruption Summary

<i>DATE</i>	<i>SCHED. TIME</i>	<i>ROUTE</i>	<i>BUS #</i>	<i>LOCATION</i>	<i>REASON</i>	<i>MINUTES DELAYED</i>
18-Aug	10:00	3	51	San Andreas	Mechanical Failure	Cancelled
18-Aug	11:00	3	51	West Point	Mechanical Failure	Cancelled
21-Aug	10:00	3	55	San Andreas	Mechanical Failure	Cancelled
21-Aug	11:00	3	55	West Point	Mechanical Failure	Cancelled
22-Aug	10:00	3	48	San Andreas	Mechanical Failure	Cancelled
22-Aug	11:00	3	48	West Point	Mechanical Failure	Cancelled
25-Aug	10:00	3	51	San Andreas	Mechanical Failure	Cancelled
25-Aug	11:00	3	51	West Point	Mechanical Failure	Cancelled
30-Aug	10:00	3	51	San Andreas	Mechanical Failure	Cancelled
30-Aug	11:00	3	51	West Point	Mechanical Failure	Cancelled

## VIII. Fleet Maintenance Report

Calaveras Transit

Fleet Maintenance Report for the Month of

**August-06**

Identified Concern	Bus	Date Filed	Action Taken	Date Reconsiled	Completed By
Oil Leak	51	11-Jul	Bus towed to dealer, high pressure oil line replaced	5-Aug	Jackson Ford
Oil Product Leak	51	17-Aug	Bus Towed, Fuel leading from oil/water seperator valve valve replaced	20-Aug	SM
Interior Electrical NonOp	56	18-Aug	Replaced blown fuses	20-Aug	SM
Turn Signals/ 4-Ways NonOp	55	22-Aug	Unable to locate problem; diagnosis continuing	OPEN	
Smog Pump Frozen	48	21-Aug	Smog pump on order	OPEN	
Transmission Leak	51	24-Aug	Transmission on order	OPEN	

# Wheelchair Lift Usage

For the month of August 2006

Date	Vehicle #	Pick up point	Drop off point	P/U Time	D/O Time
8/2	54	Mark Twain Conv. Hosp.	ARC	11:20	11:34
8/3	54	Mark Twain Conv. Hosp.	ARC	11:20	11:33
8/9	54	Mark Twain Conv. Hosp.	ARC	11:20	11:34
8/10	54	Mark Twain Conv. Hosp.	ARC	11:20	11:36
8/16	54	Mark Twain Conv. Hosp.	ARC	11:20	11:34
8/17	54	Mark Twain Conv. Hosp.	ARC	11:20	11:34
8/23	54	Mark Twain Conv. Hosp.	ARC	11:20	11:37
8/24	54	Mark Twain Conv. Hosp.	ARC	11:20	11:34
8/30	54	Mark Twain Conv. Hosp.	ARC	11:20	11:34
8/31	54	Mark Twain Conv. Hosp.	ARC	11:20	11:34