



MV Transportation, Inc.

I. Project Manager's Summary

From: Betty Berger, Calaveras Transit General Manager
MV Transportation, Inc.
750 Industrial Way - P. O. Box 1385
San Andreas, Ca 95249
Phone (209) 754-4450
Fax (209) 754-9086

To: Calaveras County
Nathan Atherstone
Transportation & Transit Planner

Special Events:

MV provided the final charters for the Bear Valley Music Festival through August 14th. We also provided charter service on August 20th for the Big Trees State Park Family Day. We ran a shuttle from Big Trees Market parking lot in Arnold up to the State Park entrance and back for the entire day.

On time performance checks: On time performances had been check periodically through out the month of August. There were not any significant problems of drivers running ahead of schedule.

Trends: Ridership continued its increase this month as the Bret Harte School district returned to school. Columbia College started its fall semester on August 29th so we expect ridership to continue rising. Fuel price increases may also have a major effect on ridership as more people ride the bus instead of driving their own vehicles.

Comments/Compliments/Complaints:

MV received a letter complimenting driver Karen Phillips for her service driving during the Bear Valley Music Festival. The passengers were very pleased with her personality and driving skill.

Safety and Training:

August's safety meeting was held on August 20th and the topic was the Smith System and the 5 keys for space cushion driving.

MV ran a series of newspaper ads for hiring new drivers. We have had great responses and have signed up 3 people to attend class to become quality drivers for Calaveras Transit.

II. Billing Summary

P.O. Box 39000, Dept. 33135
 San Francisco, CA 94139-3135

INVOICE

Customer	
Number: 5901	Name: County of Calaveras
Address: 891 Mountain Ranch Rd.	
City: San Andreas	State: CA ZIP: 95249
Contact: Nathan Atherstone Transit and Transportation Planner	

Terms	9/1/2005
Due Date	NET 30
	10/1/2005

Qty	Description	Account code	Unit Price	TOTAL
1	Fixed Fee August 2005	4080	12,152.00	12,152.00
1274.72	Variable August 2005	4080	29.84	38,037.64
	Subtotal			
	Charter OT August 2005			
19.25	Bear Valley Music Festival	4080	\$38.90	748.83
8.63	Big Trees Family Day	4080	\$38.90	335.71
	Subtotal			
27.88	Charter Sub Total			
1302.60	Hours Sub Total			-
1	Progress Payment 15th of the Month	4080	(\$18,051.94)	(18,051.94)
1	Progress Payment End of Month	4080	(\$18,051.94)	(18,051.94)
	SubTotal			15,170.30
				-
	TOTAL			15,170.30



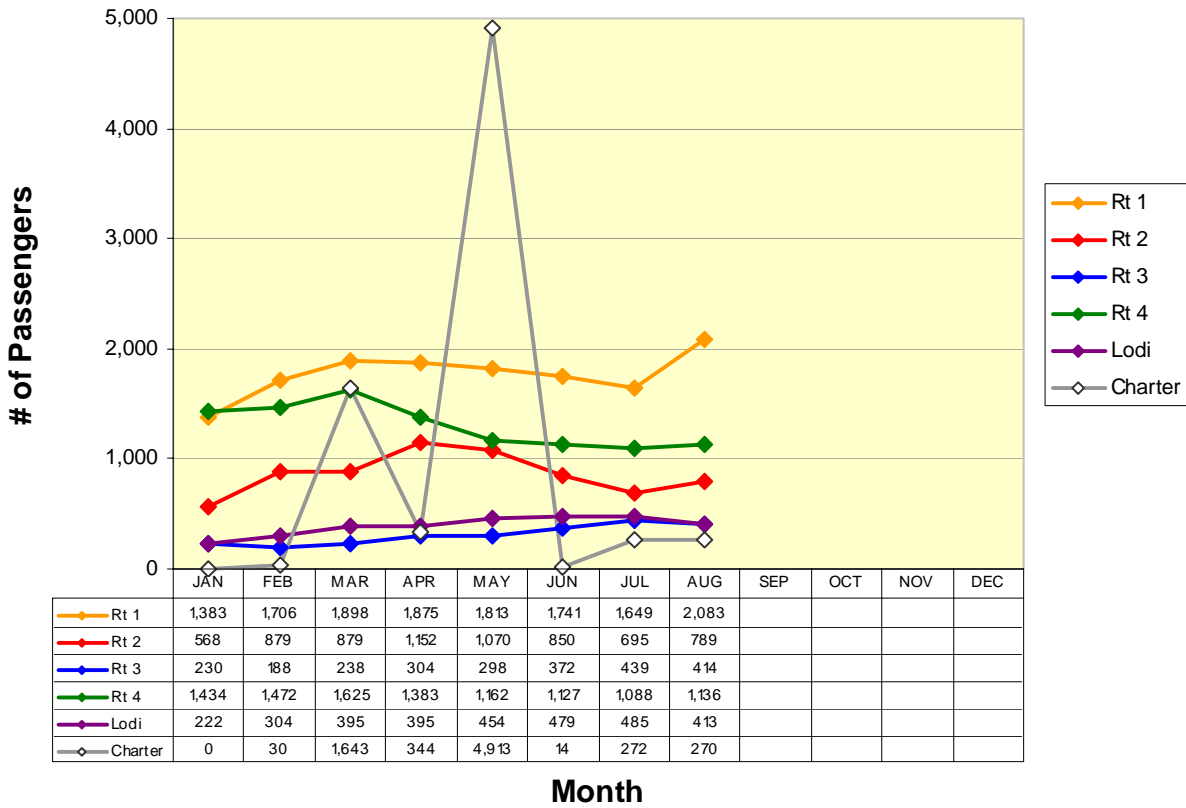
IV. Current Month Operational Statistics

	Fixed Rt.	Angels DAR	Lodi	Charter	Total
Ridership	4422	37	413	270	5,142
Vehicle Hours	1306.53	11.17	165.68	29.88	1,513.27
Vehicle Service Hours	1102.03	8.92	163.77	27.88	1,302.60
Operating Days	23	3	23	4	27
Vehicle Service Miles	31947	93	5,207	523	37,770

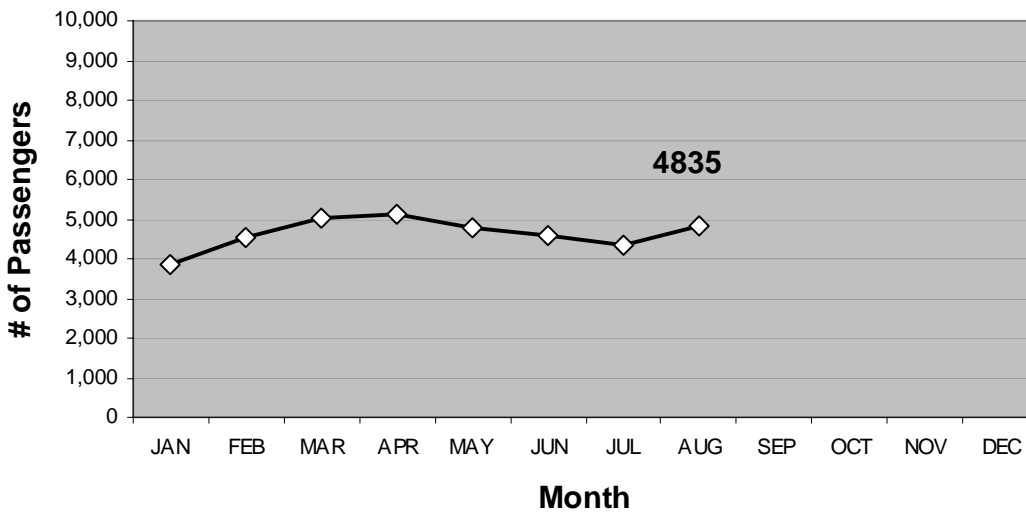
	Rt 1	Rt 2	Rt 3	Rt 4	LODI	All
Cash Regular	809	328	110	557	193	1,997
Cash Discount	222	91	41	109	103	566
Pass Regular	31	49	53	13	2	148
Pass Discount	131	74	35	36	13	289
Ticket Regular	66	31	15	15	14	141
Ticket Discount	160	68	30	97	26	381
Transfer	527	117	74	212	53	983
Promo	0	0	0	0	0	0
Free	55	14	8	87	7	171
Day Pass	82	17	48	10	2	159
Total Passenger #	2,083	789	414	1,136	413	4,835

V. Ridership Trends

Calaveras Transit Ridership



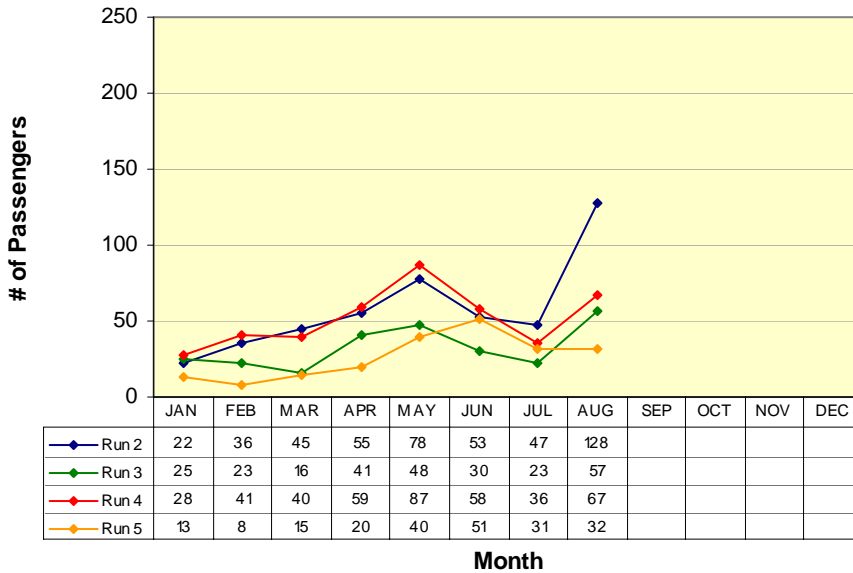
Fixed Route Ridership



ROUTE 1a

Rancho Calaveras / Valley Springs / San Andreas

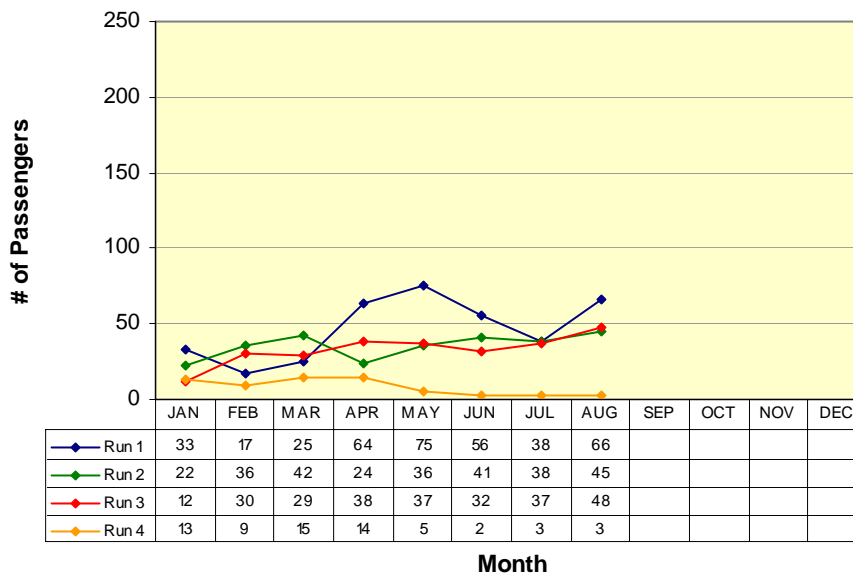
Route 1a(E) (Rancho Calaveras to San Andreas*)



RUN 1:
Hwy 26/Baldwin 7:06am
Govt Center 7:41am
RUN 2:
Hwy 26/Baldwin 8:06am
Govt Center 8:40am
RUN 3:
Hwy 26/Baldwin 10:53am
Govt Center 11:30am
RUN 4:
Hwy 26/Baldwin 4:43pm
Govt Center 5:14pm

**Does not include Lodi Service runs*

Route 1a(W) (Government Center to Rancho Calaveras*)



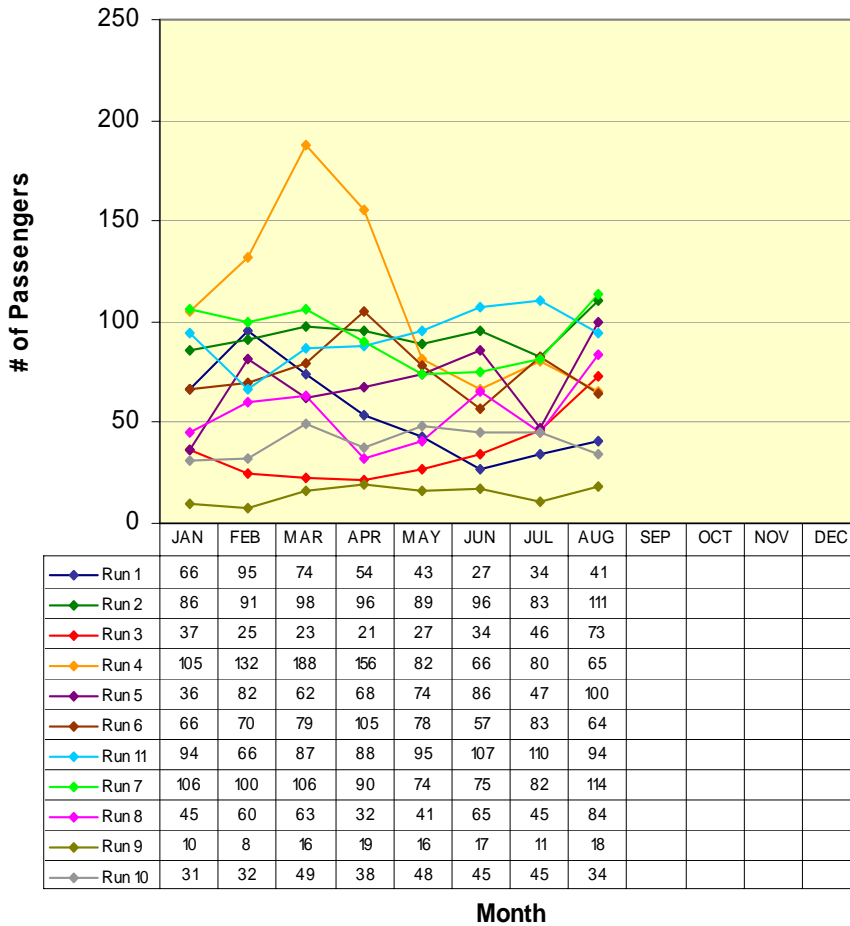
RUN 1:
Govt Center 7:41am
Hwy 26/Baldwin 8:06am
RUN 2:
Govt Center 10:28am
Hwy 26/Baldwin 10:53am
RUN 3:
Govt Center 5:00pm
Hwy 26/Baldwin 5:26pm
RUN 4:
Govt Center 7:42pm
Hwy 26/Baldwin 8:14pm
(Run 4 is on demand only)

** Does not include Lodi Service runs*

ROUTE 1b

San Andreas / Angels Camp

Route 1b(S) (San Andreas to Angels Camp)



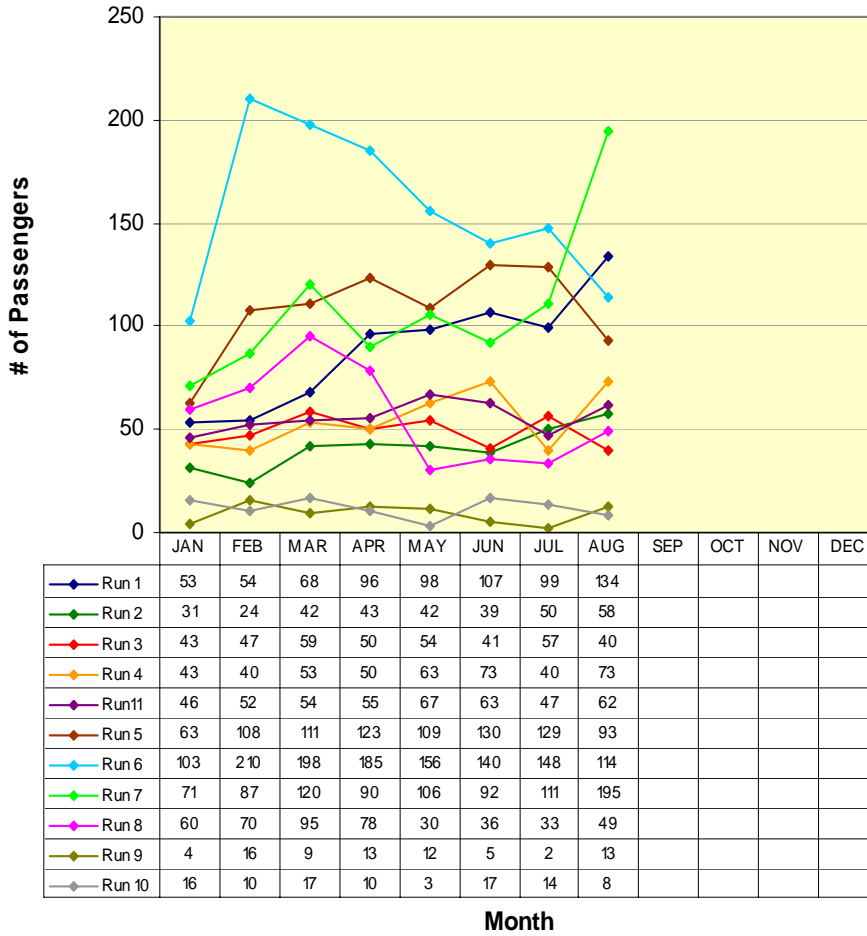
RUN 1:	
Govt Center	6:45am
Visitor's Center	7:08am
RUN 2:	
Govt Center	7:41am
Visitor's Center	8:05am
RUN 3:	
Govt Center	8:36am
Visitor's Center	8:59am
RUN 4:	
Govt Center	9:25am
Visitor's Center	9:48am
RUN 5:	
Govt Center	11:30am
Visitor's Center	11:53am
RUN 6:	
Govt Center	12:18pm
Visitor's Center	12:41pm
RUN 7:	
Govt Center	2:40pm
Visitor's Center	3:02pm
RUN 8:	
Govt Center	4:05pm
Visitor's Center	4:28pm
RUN 9:	
Govt Center	5:14pm
Visitor's Center	5:37pm
RUN 10:	
Govt Center	6:10pm
Visitor's Center	6:33pm
RUN 11:	
Govt Center	6:52pm
Visitor's Center	7:15pm

**Not all runs end in same location*

ROUTE 1b

San Andreas / Angels Camp

Route 1b(N) (Angels Camp to San Andreas)

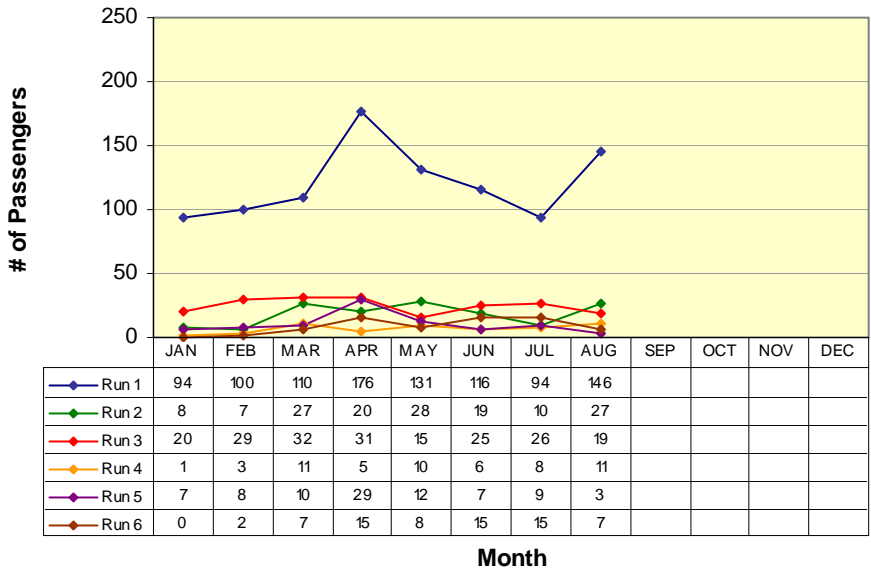


RUN 1:	
Visitor's Center	7:17am
Govt Center	7:41am
RUN 2:	
Visitor's Center	8:06am
Govt Center	8:29am
RUN 3:	
Visitor's Center	9:04am
Govt Center	9:26am
RUN 4:	
Visitor's Center	9:55am
Govt Center	10:18am
RUN 5:	
Visitor's Center	11:06am
Govt Center	11:28am
RUN 6:	
Visitor's Center	12:50pm
Govt Center	1:12pm
RUN 7:	
Govt Center	2:56pm
Visitor's Center	3:18pm
RUN 8:	
Govt Center	4:38pm
Visitor's Center	5:00pm
RUN 9:	
Govt Center	5:45pm
Visitor's Center	6:07pm
RUN 10:	
Govt Center	6:45pm
Visitor's Center	7:07pm
RUN 11:	
Govt Center	7:20pm
Visitor's Center	7:42pm

ROUTE 2a

Railroad Flat / Mountain Ranch / San Andreas

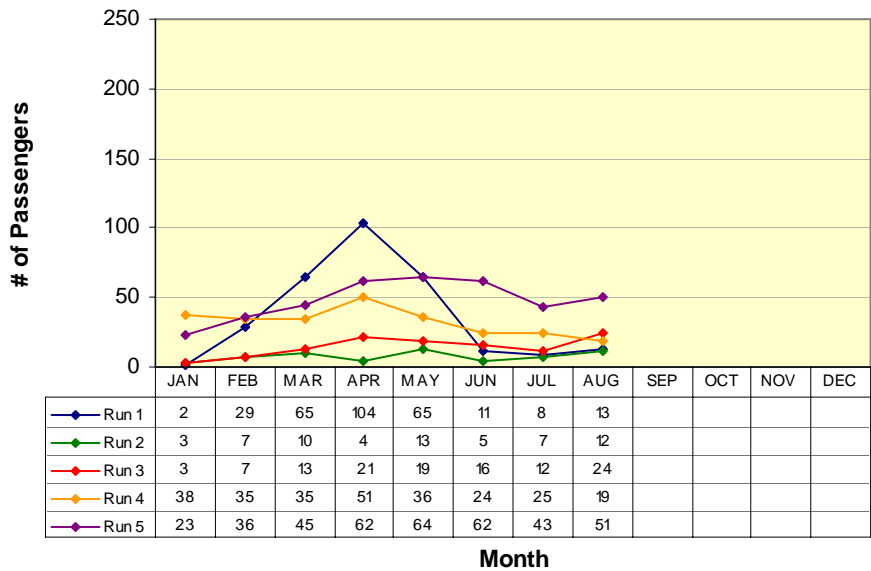
Route 2a(W) (Railroad Flat/Mtn Ranch to San Andreas*)



- RUN 1:**
Community Center 7:11am
Govt Center 7:41am
- RUN 2:**
Community Center 9:20am
Govt Center 9:50am
- RUN 3:**
Blunder Inn 11:13am
Govt Center 11:26am
- RUN 4:**
Blunder Inn 1:15pm
Govt Center 1:28pm
- RUN 5:**
Blunder Inn 3:59pm
Govt Center 4:12pm
- RUN 6:**
Community Center 6:00pm
Govt Center 6:30pm

*Not all runs begin in same location

Route 2a(E) (San Andreas to Mtn Ranch/Railroad Flat*)



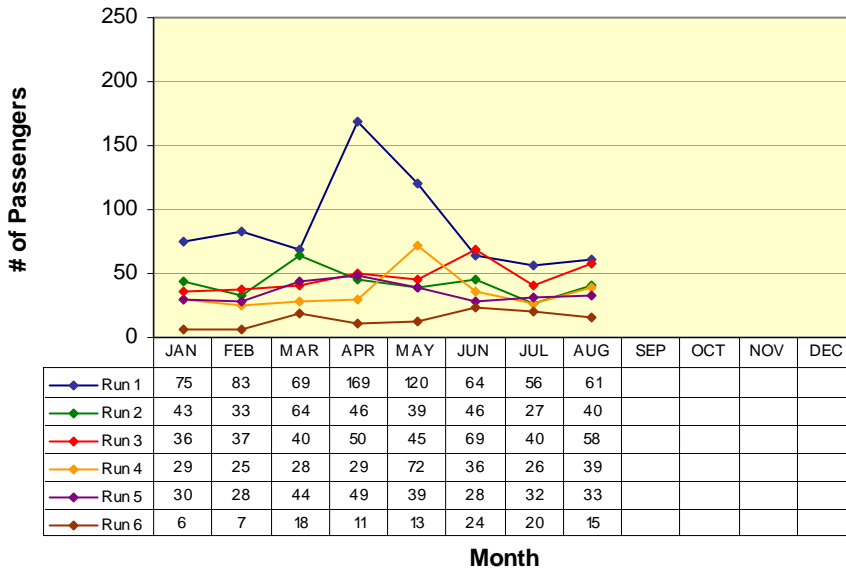
- RUN 1:**
Govt Center 8:48am
Community Hall 9:18am
- RUN 2:**
Govt Center 10:58am
Blunder Inn 11:11am
- RUN 3:**
Govt Center 1:00pm
Blunder Inn 1:13pm
- RUN 4:**
Govt Center 3:44pm
Blunder Inn 3:57pm
- RUN 5:**
Blunder Inn 5:25pm
Govt Center 5:55pm

*Not all runs end in same location

ROUTE 2b

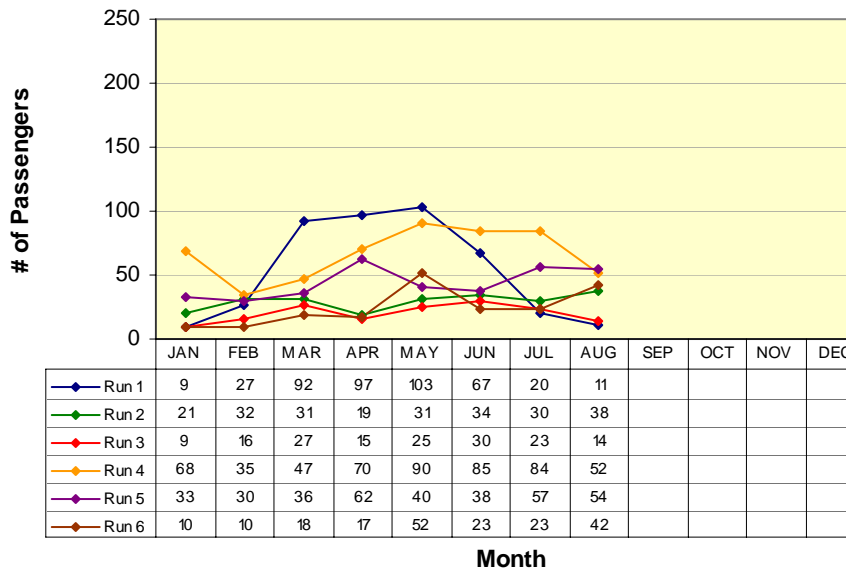
San Andreas / Mokelumne Hill / Jackson

Route 2b(N) (San Andreas to Jackson)



RUN 1:	
Govt Center	7:41am
Raley's	8:13am
RUN 2:	
Govt Center	9:50am
Raley's	10:22am
RUN 3:	
Govt Center	11:26am
Raley's	11:58am
RUN 4:	
Govt Center	2:38pm
Raley's	3:10pm
RUN 5:	
Govt Center	4:12pm
Raley's	4:44pm
RUN 6:	
Govt Center	6:20m
Raley's	6:52pm

Route 2b(S) (Jackson to San Andreas)

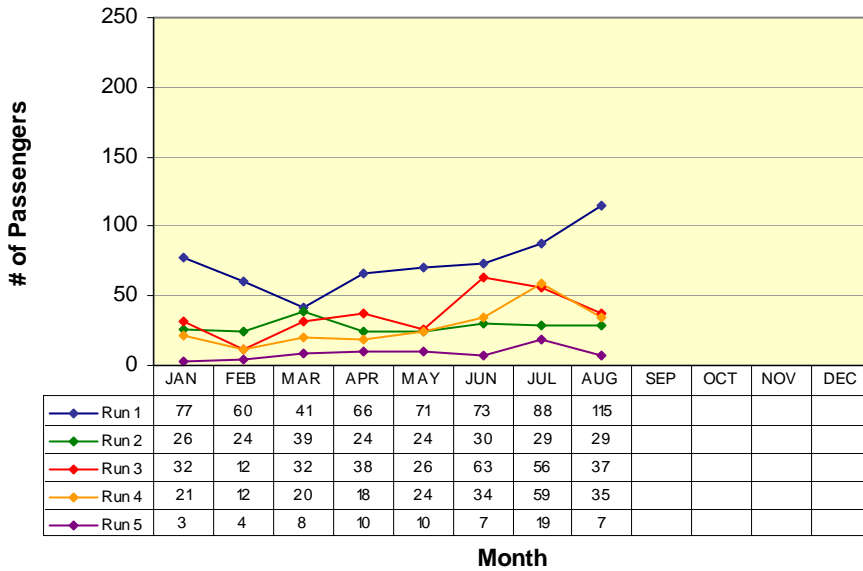


RUN 1:	
Raley's	8:18am
Govt Center	8:48am
RUN 2:	
Raley's	10:28am
Govt Center	10:58am
RUN 3:	
Raley's	12:02pm
Govt Center	12:32pm
RUN 4:	
Raley's	3:14pm
Govt Center	3:44pm
RUN 5:	
Raley's	4:48pm
Govt Center	5:18pm
RUN 6:	
Raley's	6:56pm
Govt Center	7:26pm

ROUTE 3

West Point / Glencoe / Mokelumne Hill / San Andreas

Route 3(W) (West Point to San Andreas)



RUN 1:
Community Hall 7:11am
Govt Center 8:00am

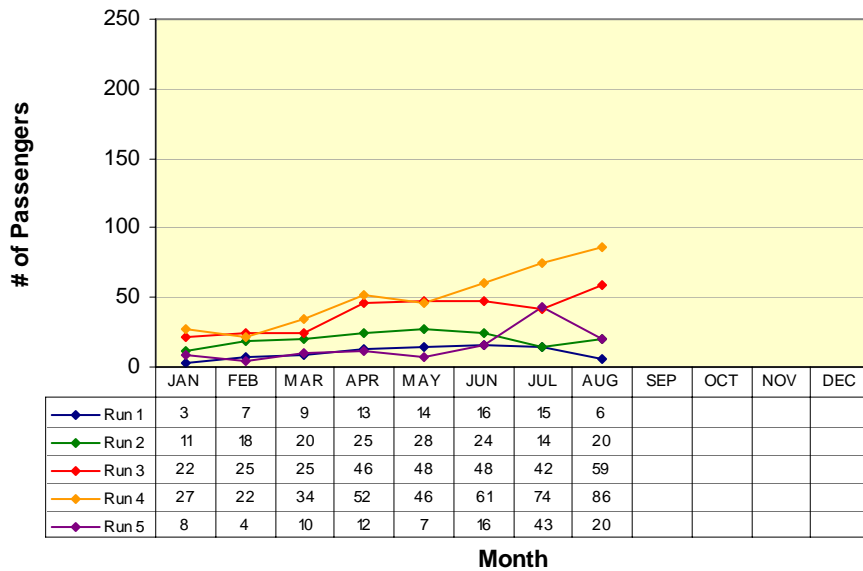
RUN 2:
Community Hall 9:07am
Govt Center 9:57am

RUN 3:
Community Hall 11:06am
Govt Center 11:56am

RUN 4:
Community Hall 3:58pm
Govt Center 4:50pm

RUN 5:
Community Hall 6:02pm
Govt Center 6:52pm

Route 3(E) (San Andreas to West Point)



RUN 1:
Govt Center 8:15am
Community Hall 9:03am

RUN 2:
Govt Center 10:14am
Community Hall 10:56am

RUN 3:
Govt Center 3:11pm
Community Hall 3:58pm

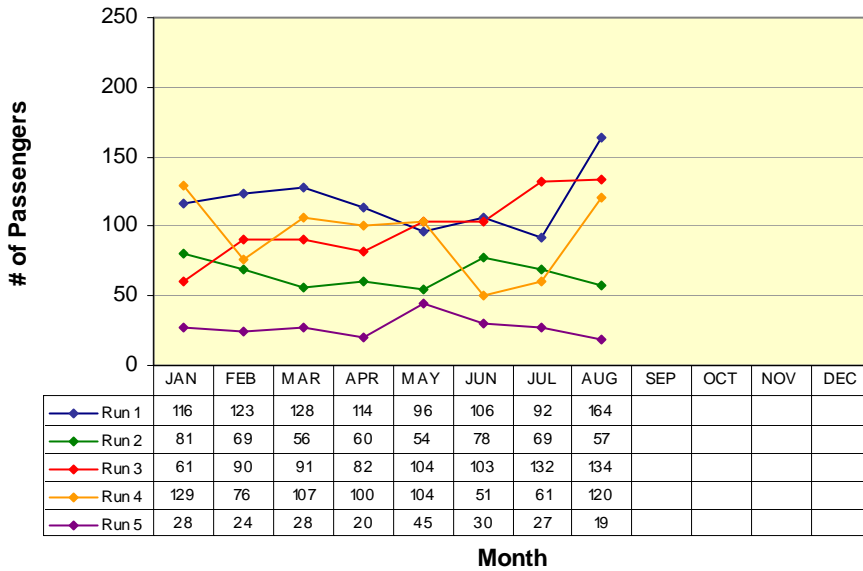
RUN 4:
Govt Center 5:05pm
Community Hall 5:53pm

RUN 5:
Govt Center 7:11pm
Community Hall 7:57pm

ROUTE 4a

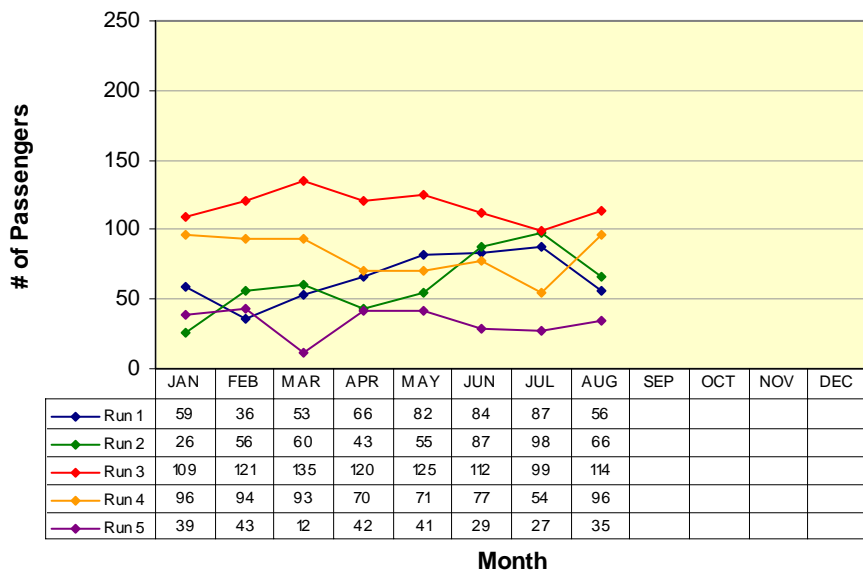
Arnold / Avery / Forest Meadows / Murphys / Angels Camp

Route 4a(W) (Arnold to Angels Camp)



RUN 1:	
Post Office	6:29am
Visitor's Center	7:13am
RUN 2:	
Post Office	9:08am
Visitor's Center	9:52am
RUN 3:	
Post Office	12:00pm
Visitor's Center	12:41pm
RUN 4:	
Post Office	3:44pm
Visitor's Center	4:28pm
RUN 5:	
Post Office	6:34pm
Visitor's Center	7:18pm

Route 4a(E) (Angels Camp to Arnold)

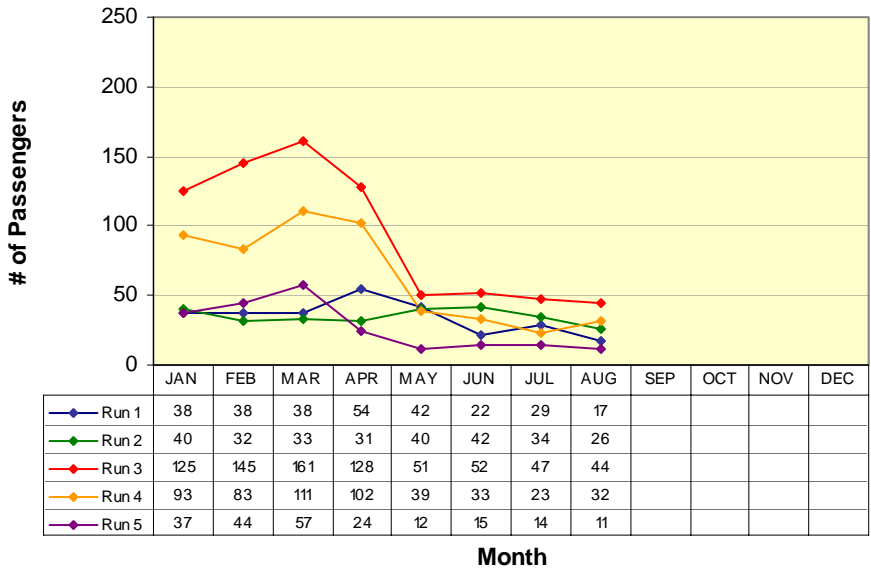


RUN 1:	
Visitor's Center	8:17am
Post Office	9:01am
RUN 2:	
Visitor's Center	11:04am
Post Office	11:48am
RUN 3:	
Visitor's Center	2:55pm
Post Office	3:39am
RUN 4:	
Visitor's Center	5:45pm
Post Office	6:29pm
RUN 5:	
Visitor's Center	8:29pm
Post Office	9:13pm

Route 4b

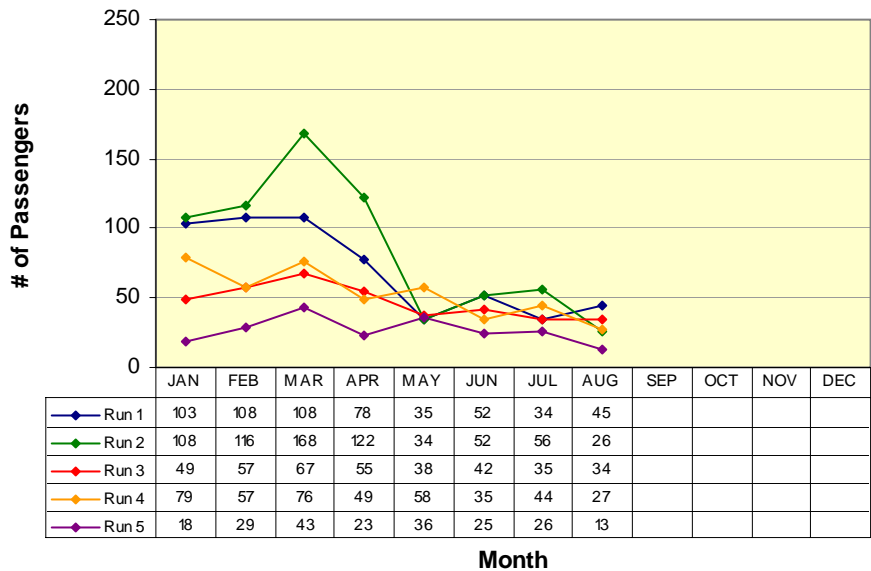
Angels Camp / Calaveras Center / Columbia College

Route 4b(N) (Columbia College to Angels Camp)



RUN 1:	
Oak Pavilion	7:45am
Visitor's Center	8:17am
RUN 2:	
Oak Pavilion	10:32am
Visitor's Center	11:04am
RUN 3:	
Oak Pavilion	2:00pm
Visitor's Center	2:32pm
RUN 4:	
Oak Pavilion	5:13pm
Visitor's Center	5:45pm
RUN 5:	
Oak Pavilion	7:57pm
Visitor's Center	8:29pm

Route 4b(S) (Angels Camp to Columbia College)

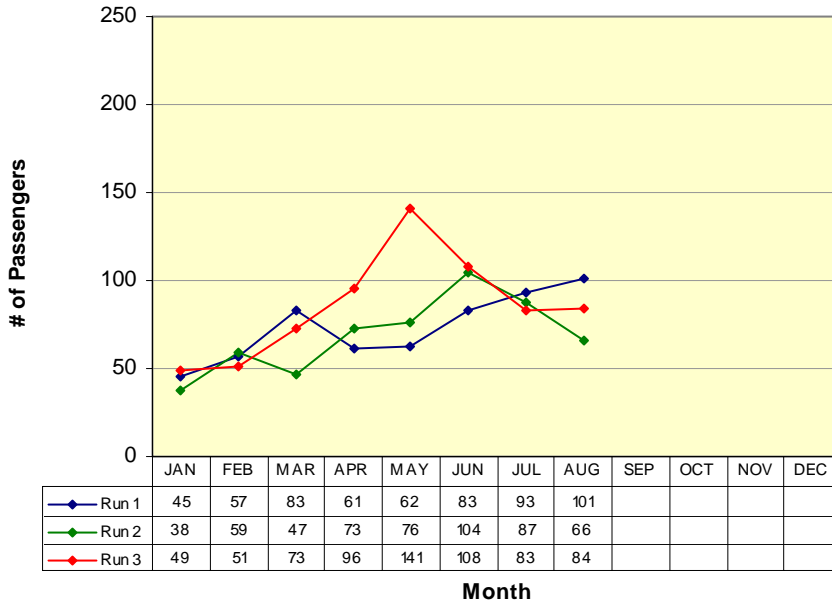


RUN 1:	
Visitor's Center	7:13am
Oak Pavilion	7:45am
RUN 2:	
Visitor's Center	9:52am
Oak Pavilion	10:24am
RUN 3:	
Visitor's Center	12:41pm
Oak Pavilion	1:13pm
RUN 4:	
Visitor's Center	4:28pm
Oak Pavilion	5:00pm
RUN 5:	
Visitor's Center	7:18pm
Oak Pavilion	7:50pm

Lodi

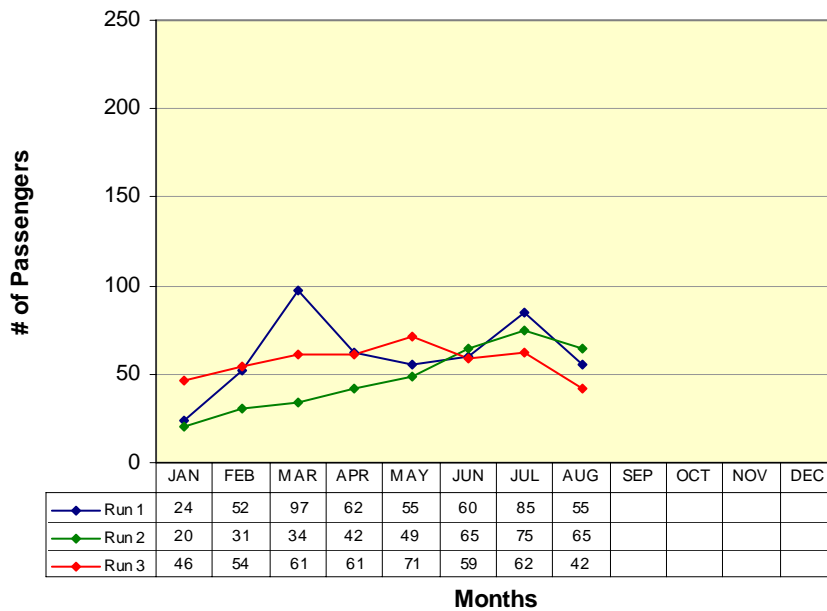
San Andreas / Valley Springs / Wallace / Clements / Lockeford / Victor / Lodi

San Andreas to Lodi (W)



RUN 1:
Govt Center 9:30am
Lodi Station 10:36am
RUN 2:
Govt Center 1:34pm
Lodi Station 2:40pm
RUN 3:
Govt Center 3:50pm
Lodi Station 4:56pm

Lodi to San Andreas (E)



RUN 1:
Lodi Station 11:10am
Govt Center 12:16pm
RUN 2:
Lodi Station 2:55pm
Govt Center 4:01pm
RUN 3:
Lodi Station 5:40pm
Govt Center 6:46pm

VI. Vehicles Report

<i>Vehicle #</i>	<i>End Miles</i>	<i>Miles this Month</i>	<i>Miles YTD</i>	<i>Fuel Mileage</i>	<i>Breakdown Frequency</i>	<i>Repair Costs</i>	<i>Major Components Repaired / Replaced</i>
Bus 48	279147	995	5346	8.0			
Bus 50	320881	6537	8147	8.8			
Bus 51	294943	5532	12051	9.1			
Bus 52	227569	0	0	0.0			
Bus 53	352475	4773	8059	9.2			
Bus 54	140302	3090	8587	9.5			
Bus 55	147969	7046	13414	8.1			
Bus 56	40729	6917	12653	9.5			
Bus 57	44240	7770	11559	8.6			

VII. Service Disruption Summary

DATE	ROUTE	BUS #	LOCATION	REASON	MINUTES DELAYED
5-Aug	3	50	WP	Transmission	50
5-Aug	4	51	Arnold	Broken Belt	50
15-Aug	2	50	RRF	Accident blocking road	68
16-Aug	1	55	SA	House being moved	45
17-Aug	3	51	WP	ABS / Parking Brake	40
22-Aug	Lodi	56	Lodi	Power Steering hose	165
26-Aug	1	51	AC	Vacuum Pump	20
31-Aug	4	57	SA	Power Steering hose (in yard)	20